

Product datasheet for **RG216307**

BAP29 (BCAP29) (NM_001008406) Human Tagged ORF Clone

Product data:

Product Type:	Expression Plasmids
Product Name:	BAP29 (BCAP29) (NM_001008406) Human Tagged ORF Clone
Tag:	TurboGFP
Symbol:	BAP29
Synonyms:	B-cell receptor-associated protein 29; B-cell receptor-associated protein BAP29; BAP29; DKFZp686M2086
Mammalian Cell Selection:	Neomycin
Vector:	pCMV6-AC-GFP (PS100010)
E. coli Selection:	Ampicillin (100 ug/mL)
ORF Nucleotide Sequence:	>RG216307 representing NM_001008406 Red=Cloning site Blue=ORF Green=Tags(s)

TTTTGTAATACGACTCACTATAGGGCGGCCGGAATTCGTCGACTGGATCCGGTACCGAGGAGATCTGCC
GCC**CGATCGCC**

ATGACACTCCAATGGGCTGCAGTGGCAACCTTTCTTTATGCCGAAATAGGACTCATTTTAACTTTCTGCC
TACCTTTTATTCTCCTCAGAGATGGCAGAAGATTTTTTCATTTAATGTCTGGGGTAAAATTGCAACTTT
TTGGAACAAGGCTTTCCTTACCATTATCATCCTATTGATTGTTCTATTTCTAGATGCTGTGAGAGAAGTA
AGGAAATATTCTCAGTTCATACCATTGAGAAGAGCTCCACCAGCAGACCTGATGCCTATGAACACACAC
AGATGAACTTTTTAGGCTCAAAGAACTTTTACATTTCTGGATTTTCCCTATTTTTTTGGCTAGTTTT
GAGACGCTGGTTACGCTTATTACTCAACTGGCAAAGAAGTGTCAAACAAGGTGTAATAAACTCAA
GCAGAAAATACTAACAAGGCTGCCAAAAATTTATGGAAGAAAACGAAAACTAAAAAGGATTTTAAAA
GCCATGGTAAAGATGAAGAATGTGTTTTGGAAGCAGAAAATAAAAACTAGTAGAAGACCAGGAGAACT
GAAAACTGAATTAAGGAAGACTTCAGATGCCCTTTCTAAGGCACAAAATGATGTGATGGAATGAAGATG
CAGTCAGAGAGACTTTCGAAAGAATATGATCAACTCCTGAAAGAACACTCTGAATTCAGAAGCAAAGGG
AGATATTACCACACAGAAGAGGAGAAAGCACAGTGACCACAGAGGCAGAGATTGGAGTATGGAGCCGCA
GCAAAGGAATGCTGACAGCCACCAGAAGCTGGAGGAGGCAAAGAACAGATTCTTCCCAGAGCCTCTTCC
AGCAGGAGCATGGCCCTACAGATACCGATAAACTGATATTGGACTTCTGGCCTCCAGAAGTATGGGAA
TAAATTTATTGTTTCAAGCTATCAAGTTTGTGATTATTTGTTACTGCTGCCATAGTAAATTAATACAGGA
GCATGCAGGACAGATCTGTAATGGCCTGAAC

ACGCGTACGCGGCCGCTCGAG - GFP Tag - GTTTAA



[View online »](#)

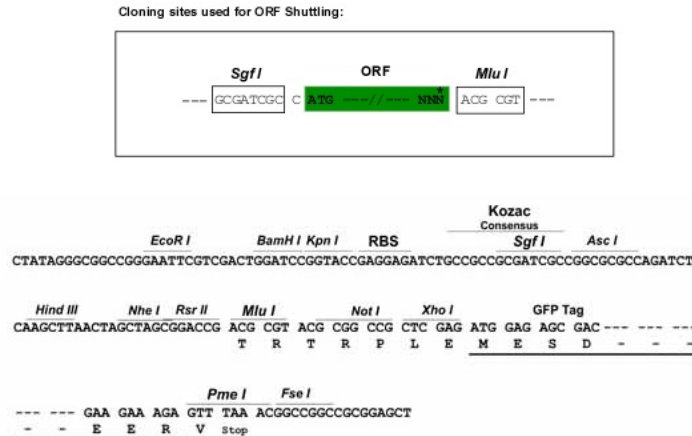
Protein Sequence: >RG216307 representing NM_001008406
 Red=Cloning site Green=Tags(s)

MTLQWAAVATFLYAEIGLILIFCLPFIPPQRWQKIFSFNVWGKIATFWNKAFLTIIILLIVFLDAVREV
 RKYSSVHTIEKSSTSRDPAYEHTQMKLFRSQRNLYISGFSLFFWLVLRRVLTLITQLAKELSNKGVLTQ
 AENTNKAACKFMEENEKLRILKSHGKDEECVLEAENKKLVEDQEKLKTELKTSALSKAQNDVMEMKM
 QSERLSKEYDQLLKEHSELQKQREILPHRRGESTVTTEAEIGVMEPQQRNADSHQKLEEKNRFFPRASS
 SRSMALQIPIKLILDFLASRTMGINLLFQAIFVVIICYCCHSKLIQEHAQIICNGLN

TRTRPLE - GFP Tag - V

Restriction Sites: SgfI-MluI

Cloning Scheme:



ACCN: NM_001008406

ORF Size: 1011 bp

OTI Disclaimer: The molecular sequence of this clone aligns with the gene accession number as a point of reference only. However, individual transcript sequences of the same gene can differ through naturally occurring variations (e.g. polymorphisms), each with its own valid existence. This clone is substantially in agreement with the reference, but a complete review of all prevailing variants is recommended prior to use. [More info](#)

OTI Annotation: This clone was engineered to express the complete ORF with an expression tag. Expression varies depending on the nature of the gene.

Components: The ORF clone is ion-exchange column purified and shipped in a 2D barcoded Matrix tube containing 10ug of transfection-ready, dried plasmid DNA (reconstitute with 100 ul of water).

Reconstitution Method:

1. Centrifuge at 5,000xg for 5min.
2. Carefully open the tube and add 100ul of sterile water to dissolve the DNA.
3. Close the tube and incubate for 10 minutes at room temperature.
4. Briefly vortex the tube and then do a quick spin (less than 5000xg) to concentrate the liquid at the bottom.
5. Store the suspended plasmid at -20°C. The DNA is stable for at least one year from date of shipping when stored at -20°C.

RefSeq: [NM_001008406.1](#), [NP_001008406.1](#)

RefSeq Size: 2429 bp

RefSeq ORF: 1013 bp

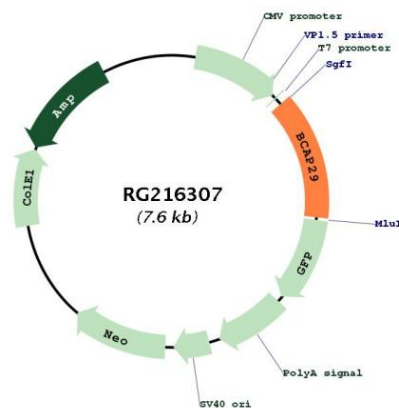
Locus ID: 55973

Cytogenetics: 7q22.3

Protein Families: Druggable Genome, Transmembrane

Gene Summary: May play a role in anterograde transport of membrane proteins from the endoplasmic reticulum to the Golgi. May be involved in CASP8-mediated apoptosis (By similarity). [UniProtKB/Swiss-Prot Function]

Product images:



Circular map for RG216307