

## Product datasheet for **RG216303**

### **RAB6B (NM\_016577) Human Tagged ORF Clone**

#### Product data:

**Product Type:** Expression Plasmids  
**Product Name:** RAB6B (NM\_016577) Human Tagged ORF Clone  
**Tag:** TurboGFP  
**Symbol:** RAB6B  
**Mammalian Cell Selection:** Neomycin  
**Vector:** pCMV6-AC-GFP (PS100010)  
**E. coli Selection:** Ampicillin (100 ug/mL)  
**ORF Nucleotide Sequence:** >RG216303 representing NM\_016577  
Red=Cloning site Blue=ORF Green=Tags(s)

TTTTGTAAACGACTCACTATAGGGCGGCCGGAATTCGTCGACTGGATCCGGTACCGAGGAGATCTGCC  
 GCCCGGATCGCC

ATGTCCGCAGGGGAGATTTTGGGAATCCACTGAGAAAATTCAAGTTGGTGTCTTGGGGGAGCAGAGCG  
TCGGGAAGACGTCTCTGATTACGAGGTTTCATGTACGACAGCTTCGACAACACATACCAGGCAACCATTGG  
GATTGACTTCTTGTCAAAAACCATGTACTTGGAGGACCGCAGGTGCGACTGCAGCTCTGGGACACAGCT  
GGTCAGGAGAGGTTCCGCAGCTGATCCCCAGCTACATCCGGGACTCCACGGTGGCTGTGGTGGGTACG  
ACATCACAAATCTCAACTCCTTCCAACAGACCTCTAAGTGGATCGACGACGTCAGGACAGAGAGGGGCAG  
TGATGTTATCATCATGCTGGTGGGCAACAAGACGACCTGGCTGATAAGAGGCAGATAACCATCGAGGAG  
GGGAGCAGCGCGCCAAAGAACTGAGCGTCATGTTTCATTGAGACCAGTGCAGAACTGGCTACAACGTGA  
AGCAGCTTTTTCGACGTGTGGCGTCGGCTCTACCCGGAATGGAGAATGTCCAGGAGAAAAGCAAAGAAGG  
GATGATCGACATCAAGCTGGACAAACCCAGGAGCCCCCGGCCAGCGAGGGCGGCTGCTCCTGC

ACGCGTACGCGGCCGCTCGAG - GFP Tag - GTTTAA

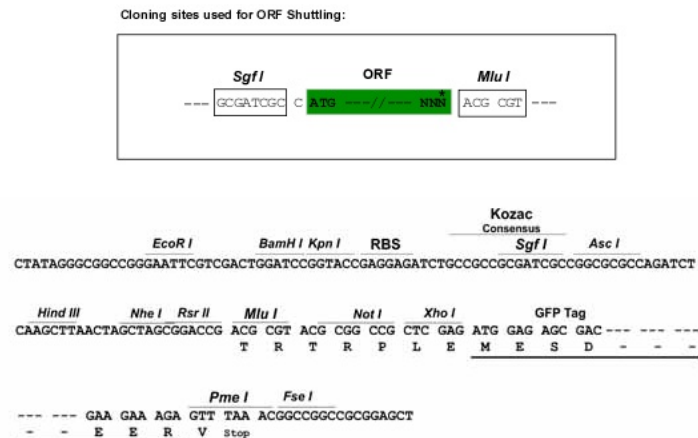
**Protein Sequence:** >RG216303 representing NM\_016577  
Red=Cloning site Green=Tags(s)

MSAGGDFGNPLRKFKLVFLGEQSVGKTSLITRFMYDSFDNTYQATIGIDFLSKTMYLEDRTVRLQLWDTA  
 GQERFRSLIPSYIRDSTVAVVVYDITNLNSFQQTSKWIDDVRTERGSDVIIMLVGNKTDLADKRQITIEE  
 GEQRAKELSVFIIETSAKTGYNVKQLFRRVASALPGMENVQEKSKEGMIDIKLDPQEPPEEGGCSC

TRTRPLE - GFP Tag - V

**Restriction Sites:** SgfI-MluI


[View online »](#)

**Cloning Scheme:**


**ACCN:** NM\_016577

**ORF Size:** 624 bp

**OTI Disclaimer:** The molecular sequence of this clone aligns with the gene accession number as a point of reference only. However, individual transcript sequences of the same gene can differ through naturally occurring variations (e.g. polymorphisms), each with its own valid existence. This clone is substantially in agreement with the reference, but a complete review of all prevailing variants is recommended prior to use. [More info](#)

**OTI Annotation:** This clone was engineered to express the complete ORF with an expression tag. Expression varies depending on the nature of the gene.

**Components:** The ORF clone is ion-exchange column purified and shipped in a 2D barcoded Matrix tube containing 10ug of transfection-ready, dried plasmid DNA (reconstitute with 100 ul of water).

**Reconstitution Method:**

1. Centrifuge at 5,000xg for 5min.
2. Carefully open the tube and add 100ul of sterile water to dissolve the DNA.
3. Close the tube and incubate for 10 minutes at room temperature.
4. Briefly vortex the tube and then do a quick spin (less than 5000xg) to concentrate the liquid at the bottom.
5. Store the suspended plasmid at -20°C. The DNA is stable for at least one year from date of shipping when stored at -20°C.

**Note:** Plasmids are not sterile. For experiments where strict sterility is required, filtration with 0.22um filter is required.

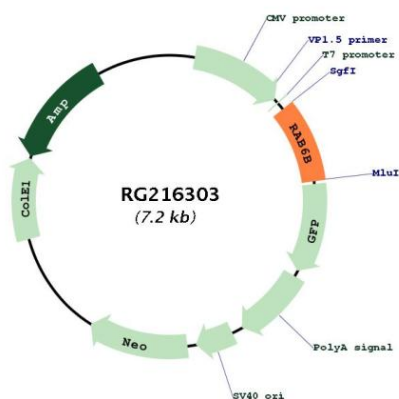
**RefSeq:** [NM\\_016577.4](#)

**RefSeq Size:** 5561 bp

**RefSeq ORF:** 627 bp

Locus ID:	51560
UniProt ID:	<a href="#">Q9NRW1</a>
Cytogenetics:	3q22.1
Domains:	ras, RAN, RAS, RHO, RAB
Protein Families:	Druggable Genome
Gene Summary:	Seems to have a role in retrograde membrane traffic at the level of the Golgi complex. May function in retrograde transport in neuronal cells.[UniProtKB/Swiss-Prot Function]

## Product images:



Circular map for RG216303