

Product datasheet for **RG216295**

KALRN (NM_003947) Human Tagged ORF Clone

Product data:

Product Type:	Expression Plasmids
Product Name:	KALRN (NM_003947) Human Tagged ORF Clone
Tag:	TurboGFP
Symbol:	KALRN
Synonyms:	ARHGEF24; CHD5; CHDS5; DUET; DUO; HAPIP; TRAD
Mammalian Cell Selection:	Neomycin
Vector:	pCMV6-AC-GFP (PS100010)
E. coli Selection:	Ampicillin (100 ug/mL)
ORF Nucleotide Sequence:	>RG216295 representing NM_003947 Red=Cloning site Blue=ORF Green=Tags(s)

TTTTGTAATACGACTCACTATAGGGCGGCCGGAATTCGTCGACTGGATCCGGTACCGAGGAGATCTGCC
GCC**CGATCGCC**

ATGACGGACCGCTTCTGGGACCAGTGGTATCTCTGGTATCTCCGCTTGCTCCGGCTGCTGGATCGAGGGT
CTTTTCGGAATGATGGTTTGAAGCTTCTGATGTCCTTCTATCCTAAAGGAAAAGGTGGCCTTCGTGTC
TGGGGTCTGATAAGCGAGGCGGACCCATCCTGACCTCCCTGCTCGCAGCAATCATGACAGAATAAGA
CAGGAAGACCTGCGGAACTCGTGACGTATTTGGCCAGCGTGCCAAGTGAGGACGTGTGCAAACGTGGCT
TCACTGTCATCATCGACATGCGGGGCTCCAAGTGGACCTCATCAAGCCCCTCCTCAAAACGCTGCAGGA
AGCCTTTCAGCTGAGATCCATGTGGCCCTCATATTAACCCGACAACCTTCTGGCAGAAACAGAAGACC
AACTTTGGCAGCTCCAAATTCATCTTTGAGACGAGCATGGTATCTGTGGAGGGCCTCACAAAGCTGGTGG
ACCCCTCCAGCTGACGGAGGAGTTTGTGGCTCCCTGGACTACAACCATGAGGAGTGGATCGAACTGCG
GCTCTCCTGGAGGAGTTCTTCAACAGCGCCGTGCACCTGCTCTCGCGCCTCGAGGACCTCCAGGAGATG
CTAGCCCAGGAGGAGTTTCTGTGGATGTGGAGGGCTCTCGCGGCTCATTGACGAACACACACAGCTCA
AGAAAAAGGTGCTGAAGGCCCTGTGGAGGAGCTGGACCGGGAGGGGAGCGGCTGCTGCAGTGCATCCG
CTGCAGCGACGGCTTCTCAGGACGCAACTGCATCCCGGCGAGTGTGACTTCCAGAGCCTGGTGCCCAAG
ATCACCGTCTCCTGGACAAGCTGCACTCCACCCGGCAGCACCTGCACCAGATGTGGCATGTGCGCAAG
TCAAGCTGGACCAAGTGTTCAGCTGCGGCTTTCGAGCAGGATGCTGAGAAGATGTTTGACTGGATAAG
CCACAACAAGGAGTTATTCCTCCAGAGCCACCGGAGATCGGAGTCAAGTACCAGTACGCCCTTGACCTC
CAGACGCAGCACAATCACTTTGCCATGAACTCCATGAATGCCTATGTCAACATCAACCGCATCATGTCCG
TGGCTTCCCGCTCTCTGAGGCCGGTCAATATGCCTCACAACAAATCAAGCAGATCTCCACCCAGCTGGA
CCAGGAGTGAAGAGCTTCGCTGCTGCCCTGGATGAACGCAGCACCATCCTCGCCATGTCTGCTGTGTT
CACCAGAAGGCTGAGCAGTTCCTGTGCGGAGTGGATGCCTGGTGAAGATGTGCAGTGAAGGTGGTCTGC
CATCCGAGATGCAAGACCTAGAGCTGGCAATCCACCACCAGACCTTGTATGAGCAGGTGACCCAAGC
CTACACAGAGTCAAGCAGGATGCAAAGCACTACTTGTGTGCTGCAGCGGCCCTGAGCCTGGGAAC



[View online »](#)

TCCGAATCCCTCACGGCCACAGCCAACACTCCAAGGCAGTGCACCAGGTGCTGGACGTGGTGCATGAGG
 TGTTACATCACCAGCGACGGCTGGAGAGCATCTGGCAGCACCGCAAGGTGCGGCTCCACCAGCGGCTGCA
 GCTCTGCGTCTTCCAGCAGGATGTACAGCAGGTGTTGGACTGGATTGAAAACCATGGTGAGGCCTTTCTC
 AGCAAACACACTGGAGTTGGGAAGTCCCTACATCGAGCCCGGGCCCTGCAGAAGAGGCATGATGACTTTG
 AAGAGGTGGCTCAGAATACGTACACCAATGCGGACAAGCTCCTAGAAGCAGCAGAGCAGTTGGCTCAGAC
 GGGGAATGTGACCCCGAGGAGATCTACAAGGCAGCTCGACACCTGGAGGTGCGCATCCAAGACTCGTG
 CGCAGGGTGGAGCAGCGGAAGCTTCTCCTGGACATGTCTGTTTCCCTTCCACACACACACCAAGAGTTGT
 GGACATGGATGGAAGACCTTCAGAAGGAGATGTTGGAGGATGTCTGTGCAGATTCTGTGGATGCAGTCCA
 GGAAGTATCAAGCAGTTCAGCAGCAGCAGACCGCCACTCTAGATGCCACACTCAATGTATCAAGGAA
 GGCAAGACCTTATCCAGCAGCTCAGGTGAGCGCTCCCTCCCTCGGGGAGCCAGCGAGGCCAGGGACT
 CGGCTGTGTCCAACAACAAAACACCCACAGCAGCTCCATCAGCCACATCGAGTCGGTCTGCAGCAGCT
 TGATGATGCCAGGTGCAGATGGAGGAGCTGTTCCAGCAGCGGAAGATCAAGCTGGACATCTTCTGCAA
 CTGCGCATCTTTGAGCAGTACACCATCGAGGTGACAGCAGAGCTAGACGCCTGGAATGAAGACTTGCTTC
 GGCAGATGAATGACTTCAACACAGAGGACCTAACCTGGCAGAACAGCGGCTGCAGCGCCACACAGAACG
 GAAGCTAGCCATGAACAACATGACCTTTGAGGTTATCCAGCAGGGACAGGATCTGCACCAGTACATCAGG
 GAGGTCCAGGCATCAGGAATTGAGTTGATCTGTGAAAAAGACATTGATCTGGCAGCCAGGTGCAAGAGT
 TATTGGAATTTCTCCATGAGAAGCAGCATGAATTGGAGCTCAATGCAGAGCAGACTCATAAGCGGCTAGA
 GCAGTGCCTCAAATTACGTACCTCCAGGCTGAAGTCAAACAGGTTCTGGGATGGATCCGCAATGGAGAG
 TCAATGCTCAACGCCAGCCTGGTCAATGCCAGCTCTTTGTGCGAAGCAGAGCAGCTGCAGCGGGAGCAGC
 AGCAGTCCAACCTGGCCATCGAGTCCCTCTTTCATGCCACTTCTTGCAGAAGACGCCACAGAGTGCCTT
 GCAGGTACAGCAGAAAGCCGAGGTGCTGCTCCAGGCCGCCACTACGATGCCGATGCCATCCGGGAATGT
 GCTGAGAAGGTGGCCCTCACTGGCAGCAGCTCATGCTGAAGATGGAAGACCGCTAAAATTGGTCAATG
 CCTCTGTGGCCTTTTACAAAACCTTCTGAACAGGTGTGTAGTGTCTGGAGAGCTTAGACCAAGAATACCG
 GAGAGATGAGGACTGGTGTGGTGGACGAGATAAGCTGGGGCCAGCAGCAGAGATCGACCATGTCTTTCCC
 CTCATCAGCAAACATTTGGAACAAAAGGAGGCCTTTCTTAAGGCCTGCACCCTGGCTCGGCGGAATGCTG
 AGGTGTTTCTCAAGTACATCCACAGGAACAACGTGAGCATGCCAGTGTGCGCAGCCACACTCGGGGACC
 CGAGCAACAAGTAAAAGCCATCTGAGTGTGCTCCTGCAGAGGGAGAATCGCGTGTGCTGATTTCTGGACC
 TTGAAGAAGCGCGGTTAGACCAATGCCAGCAATATGTGGTGTTCGAGCGCAGCGCTAAGCAGGCGCTTG
 ACTGGATCCAAGAAACAGGTGAATTTTACCTCTCAACACATACCTCCACTGGAGAGACCACAGAGGAGAC
 TCAGGAAGTGTGAAAGAATATGGGGAATTCAGGGTGCCTGCCAAGCAAACAAGGAGAAGTGAAGCTT
 CTGATTCAGTGGCCGATAGCTTTGTGAAAAAGGCCACATTCATGCCACGGAGATAAGGAAATGGGTGA
 CCACGGTGGACAAGCACTACAGAGATTTCTCCCTGAGGATGGGAAAGTACCGATACTCACTGGAGAAGC
 CCTAGGAGTCAACACAGAGGATAATAAGGACCTGGAGCTGGATATTATCCAGCAAGCCTTTTCGGATCGG
 GAGGTCAAGCTGCGGGACGCCAACCACGAAGTCAATGAAGAGAAGCGGAAGTCAAGCCCGGAAGAAAGAA
 TTATTAATGGTGAAGTACTCCAGACAGAGAAGGCTTATGTAAGGGATTTGCATGAGTGTCTTAGAGACCTA
 CCTGTGGGAAATGACCAGTGGTGTGGAGGAGATCCCCCTGGGATCCTCAATAAAGAGCATATCATCTTT
 GGCAACATCCAAGAGATCTACGATTTCCATAACAACATCTTCTCAAAGAGCTGGAGAAGTACGAGCAAC
 TGCTGAGGATGTGGGACACTGCTTTGTACCTGGGCAGACAAATTTTCAGATGTATGTACCTACTGTAA
 AAACAAGCCTGATTTCAACCAGCTTATCCTGGAGCATGCGGGCACCTTCTTTGATGAGATAACACAGCGG
 CATGGTCTGGCCAACTCCTCTCTACCTAATTAAGCCTGTCCAAAGGATACCAAATATCAACTGC
 TCTGAAGGAACCTTTAACTTGCTGTGAAGAAGGAAAGGGGAGCTCAAGGATGGCTGGAGGTGATGCT
 CAGTGTCCCAAAGAAAGCCAATGATGCCATGCATGTCAGCATGCTGGAAGGGTTCGACGAGAACCTGGAT
 GTGCAGGGGGAGTTGATTTCTCCAGGATGCCTTTCAAGTGTGGACCCGAAGTTCGATGATCCGGAAGGGG
 GGGAGCGGCACTTGTCTCTTTGAGATCTCCTTGGTTTTAGCAAGGAGATCAAAGATTCTTCAGGACA
 CACGAAATATGTTTACAAGAACAAGCTACTGACCTCAGAGCTGGGTGTGACCGAGCAGTGGAGGGCGAT
 CCCTGCAAATTCGCTTGTGGTCTGGGCGACCCCATCCTCAGACAATAAAAACAGTGTGAAAGCCTCCA
 ACATTGAAACCAAGCAGGAGTGGATCAAGAACATTCGAGAAGTGATTCAAGAAAGGATCATTCACCTGAA
 AGGAGCTTTAAAGGAGCCACTTCAGCTCCCAAACACACAGCCAAACAGAGGAACAATAGTAAGAGGGAT
 GGAGTGGAGGATATTGACAGCCAGGGGGATGGGAGCAGCCAACACAGACCATCTCCATTGCTTCTAGGA
 CCTCTCAGAACACAGTGGACAGTGACAAGGATGGCAACCTTGTCTCGGTGGCACCTGGGACCTGGAGA
 TCCTTTCTCCACTTACGTT

ACGCGTACGCGGCCGCTCGAG – GFP Tag – GTTTAA

Protein Sequence:

>RG216295 representing NM_003947
 Red=Cloning site Green=Tags(s)

```

MTDRFWDQWYLWYLRLLRLLDRGSFRNDGLKASDVLPIKKEKVAFVSGGRDKRGGPILTFPARSNHDRIR
QEDLRKLVTYLASVPSEDEVCKRGTVIIDMRGSKWDLIKPLLKTLQEAFPAEIHVALIIPDNFWQKQKT
NFGSSKIFIFETSMVSVGLTKLVDPSQLTEEFDGSLDYNHEEWIELRSLSEEFFNSAVHLLSRLEDLQEM
LARKEFPVDVEGSRRLIDEHTQLKKKVLKAPVEELDREGQRLQCIRCSDGFSGRNCIPGSADFQSLVPK
ITSLLDKHLHSTRQHLHQMWHVRKLLDQCFQLRLEQDAEKMFWDWISHNKELFLQSHTEIGVSYQYALDL
QTQHNHFAMNSMAYVNIINRIMSVASRLSEAGHYASQQIKQISTQLDQEWKSFAAALDERSTILAMSAVF
HQKAEQFLSGVDAWCKMCSEGLPSEMQDLELAIHQQTLYEQVTQAYTEVSQDGKALLDVLQRPLSPGN
SESLTATANYSKAVHQVLDVVHEVLHHQRRLSEIWHQHRKVRHLHQRLLQCVFQQDQVQVLDWIENHGEAFL
RRVEQRKLLLDMSVSFHTHTKELWTWMDLQKEMLEDVCADSDAVQELIKQFQQQTATLDATLNVIKE
GEDLIQQLRSAPPSLGEPSEARDSAVSNKTPHSSSISHIESVLQQLDDAQVQMEELFHERKIKLDIFLQ
LRIFEQYTIIEVTAELDAWNEDLLRQMDFNTEDLTLAEQRLQRHTERKLANMNTFEVIQGGDLHQYIT
EVQASGIELICEKDIDLAAQVQELLEFLHEKQHELELNAEQTHKRLQCLQLRHLQAEVKQVLGWIRNGE
SMLNASLVNASSLSEAEQLQREHEQFLAIESLFHATSLQKTHQSALQVQKAEVLLQAGHYDADAIREC
AEKVALHWQQLMLKMEDRLKLVNASVAFYKTSEQVCSVLESLEQYRRDEDWCGGRDKLGPAAEIDHVIP
LISKHLEQKEAFLKACTLARRNAEVFLKYIHRNNVSMPSVASHTRGPEQQVKAILSELLQRENRLHFWT
LKKRRLDQCQQYVVFERSAKQALDWIQETGEFYLSHTSTGETTEETQELLKEYGFRVPAKQTKKVKL
LIQLADSFVEKGHIHATEIRKWVTTVDKHYRDFSLRMGKYRYSLEKALGVNTEDNKDLELDIIPASLSDR
EVKLRDANHEVNEEKRSARKKEFIMAELLQTEKAYVRDLHECLETYLWEMTSGVEEIPPGILNKEHIIF
GNIQEIYDFHNNIFLKELEKYEQLPEDVGHCFVTWADKFMVYTYCKNPKDSNQLILEHAGTFFDEIQQR
HGLANSISSYLKIPVQRITKYQLLLKELLTCCEEGKELKDGLEVMLVSPKKANDAMHVSMLGFDENLD
VQGELILQDAFQVWDPKSLIRKGRERHLFLFEISLVFSKEIKDSSGHTKYVYKNNKLLTSELGVTEHVEGD
PCKFALWSGRTPSSDNKTVLKASNIETKQEWIKNIREVIQERIHLKGGALKEPLQLPKTPAKQRNNSKRD
GVEDIDSQDGGSSQPDTSIASRTSQNTVSDKDGNLVPRWHLGPGDPFSTYV
    
```

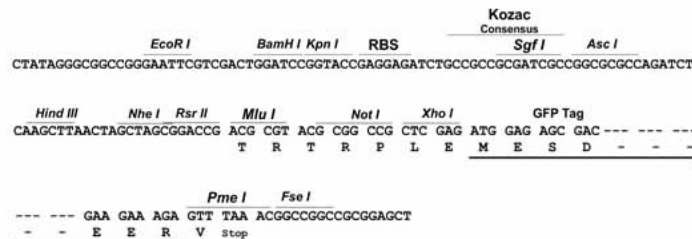
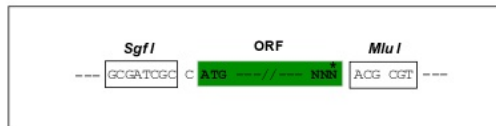
TRTRPLE – GFP Tag – V

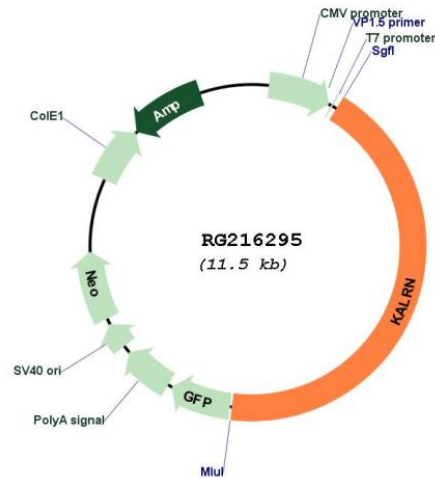
Restriction Sites:

Sgfl-MluI

Cloning Scheme:

Cloning sites used for ORF Shutting:



Plasmid Map:


ACCN: NM_003947

ORF Size: 4989 bp

OTI Disclaimer: The molecular sequence of this clone aligns with the gene accession number as a point of reference only. However, individual transcript sequences of the same gene can differ through naturally occurring variations (e.g. polymorphisms), each with its own valid existence. This clone is substantially in agreement with the reference, but a complete review of all prevailing variants is recommended prior to use. [More info](#)

OTI Annotation: This clone was engineered to express the complete ORF with an expression tag. Expression varies depending on the nature of the gene.

Components: The ORF clone is ion-exchange column purified and shipped in a 2D barcoded Matrix tube containing 10ug of transfection-ready, dried plasmid DNA (reconstitute with 100 ul of water).

Reconstitution Method:

1. Centrifuge at 5,000xg for 5min.
2. Carefully open the tube and add 100ul of sterile water to dissolve the DNA.
3. Close the tube and incubate for 10 minutes at room temperature.
4. Briefly vortex the tube and then do a quick spin (less than 5000xg) to concentrate the liquid at the bottom.
5. Store the suspended plasmid at -20°C. The DNA is stable for at least one year from date of shipping when stored at -20°C.

RefSeq: [NM_003947.6](#)

RefSeq Size: 6524 bp

RefSeq ORF: 4992 bp

Locus ID: 8997

UniProt ID:	<u>O60229</u>
Cytogenetics:	3q21.1-q21.2
Domains:	RhoGEF, SEC14, PH, spectrin
Protein Families:	Druggable Genome, Protein Kinase
Gene Summary:	Huntington's disease (HD), a neurodegenerative disorder characterized by loss of striatal neurons, is caused by an expansion of a polyglutamine tract in the HD protein huntingtin. This gene encodes a protein that interacts with the huntingtin-associated protein 1, which is a huntingtin binding protein that may function in vesicle trafficking. [provided by RefSeq, Apr 2016]