

## Product datasheet for **RG216284**

### BRN3A (POU4F1) (NM\_006237) Human Tagged ORF Clone

#### Product data:

Product Type:	Expression Plasmids
Product Name:	BRN3A (POU4F1) (NM_006237) Human Tagged ORF Clone
Tag:	TurboGFP
Symbol:	BRN3A
Synonyms:	ATITHS; brn-3A; BRN3A; Oct-T1; RDC-1
Mammalian Cell Selection:	Neomycin
Vector:	pCMV6-AC-GFP (PS100010)
E. coli Selection:	Ampicillin (100 ug/mL)
ORF Nucleotide Sequence:	>RG216284 representing NM_006237 Red=Cloning site Blue=ORF Green=Tags(s)

TTTTGTAATACGACTCACTATAGGGCGGCCGGAATTCGTCGACTGGATCCGGTACCGAGGAGATCTGCC  
GCC**CGATCGCC**

ATGATGTCCATGAACAGCAAGCAGCCTCACTTTGCCATGCATCCACCTCCCTGAGCACAAGTACCGT  
CGCTGCACTCCAGCTCCGAGGCCATCCGGCGGGCTGCCTGCCACGCCGCGCTGCAGAGCAACCTCTT  
CGCCAGCCTGGACGAGACGCTGTGGCGGGGCCGAGGCGCTGGCGGCCGTGGACATCGCCGTGTCCAG  
GGCAAGAGCCATCTTTCAAGCCGACGCCACGTACCACAGATGAACAGCGTCCGTGCACGTCCACTT  
CCACGGTGCCTCTGGCGCACCACCACCACCACCACCACCAGGCGCTCGAACC CGCGATCTGCT  
GGACCACATCTCCTCGCCGTGCTCGCGCTCATGGCCGGCGCGGGCGGCGCGGCCGCGCGGCCGCGG  
GGCGGCGCCACGACGGCCCGGGGGCGGTGGCGGCCCGGGCGGCGGCGGCGGCCGCGGCGGCGGCC  
CCGGGGGAGGCGGCGGTGGCGGCCCGGGGGCGGCGGCGGCGGCCGCGGCGGCGGCTCCTGGGCGGCTC  
CGCGCACCTCACCCGCATATGCACAGCCTGGGCCACCTGTGCGACCCCGCGGCGGCGGCCGCGCATGAAC  
ATGCCGTCCGGGTGCCGACCCCGGGCTGGTGGCGGCGGCGGCGCACACGCGCGGCGAGCGGCGGCGG  
CGGCGGCGTCCGCCGGGCGAGTGGCAGCGGCATCGGCGGCGGCGGCGGCGTGGTGGGCGCAGCGGCGTGGC  
GTCCATCTGCACTCGGACAGGACCCGCGGAGCTCGAGGCGTTCGCGGAGCGCTTCAAGCAGCGGCGC  
ATCAAGCTGGGCGTGACGAGGCGGACGTGGGCTCGGCGCTGGCCAACCTCAAGATCCCGGCGTGGGCT  
CACTCAGCCAGAGCACCATCTGCAGTTTCGAGTCGCTCACGCTCTCGCACAACAACATGATCGCGCTCAA  
GCCCATCTGCAGGCGTGGCTCGAGGAGCCGAGGGCGCCAGCGCGAGAAAATGAACAAGCCTGAGCTC  
TTCAACGGCGGCGAGAAGAAGCGCAAGCGGACTTCCATCGCCGCGCCGAGAAGCGCTCCCTCGAGGCT  
ACTTCGCCGTGCAGCCCCGGCCCTCGTCCGAGAAGATCGCCGCCATCGCCGAGAACTGGACCTCAAAA  
GAACGTGGTGGGGTGTGGTTTTGCAACCAGAGACAGAAGCAGAAGCGGATGAAATTCTCTGCCACTTAC

**ACGCGT**ACGCGGCGGCTCGAG - GFP Tag - GTTTAA



[View online »](#)

**Protein Sequence:** >RG216284 representing NM\_006237  
 Red=Cloning site Green=Tags(s)

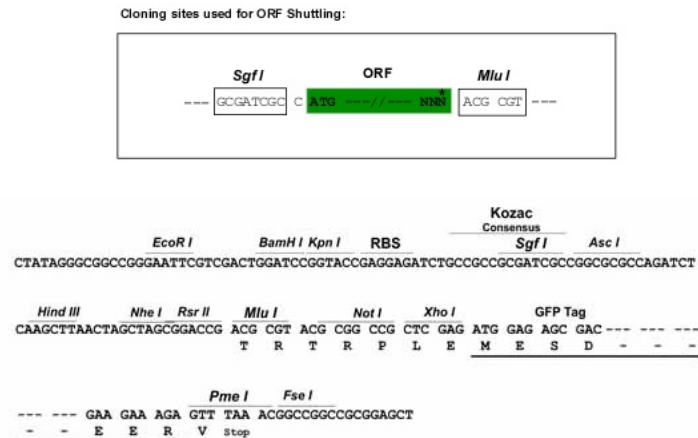
MMSMNSKQPHFAMHPTLPEHKYPSLHSSSEAIRRACLTPPLQSNLFASLDETLLARAEALAAVDIAVSQ  
 GKSHPFKPDATYHTMNSVPCTSTSTVPLAHHHHHHHHQALEPGDLLDHISPSLALMAGAGGAGAAAGG  
 GGAHDGPGGGGGPGGGGGPGGGGGPGGGGGPGGGGGPGGGLLGSAHPHPMHSLGHL SHPAAAAAMN  
 MPSGLPHPLVAAAAHHGAAAAAASAGQVAAAASAAAVVGAAGLASICDSDTDPRELEAFAERFKQRR  
 IKLGVTQADVGSALANLKIPGVGSLSQSTICRFESLTLSHNNMIALKPILQAWLEEAEQAQREKMNKPEL  
 FNGGEKKRKRTSIAAPEKRSLEAYFAVQPRPSSEKIAAIAEKLCLKNNVVRVWFNCNQKQKRMKFSATY

TRTRPLE - GFP Tag - V

**Restriction Sites:**

SgfI-MluI

**Cloning Scheme:**



**ACCN:** NM\_006237

**ORF Size:** 1260 bp

**OTI Disclaimer:** The molecular sequence of this clone aligns with the gene accession number as a point of reference only. However, individual transcript sequences of the same gene can differ through naturally occurring variations (e.g. polymorphisms), each with its own valid existence. This clone is substantially in agreement with the reference, but a complete review of all prevailing variants is recommended prior to use. [More info](#)

**OTI Annotation:** This clone was engineered to express the complete ORF with an expression tag. Expression varies depending on the nature of the gene.

**Components:** The ORF clone is ion-exchange column purified and shipped in a 2D barcoded Matrix tube containing 10ug of transfection-ready, dried plasmid DNA (reconstitute with 100 ul of water).

**Reconstitution Method:**

1. Centrifuge at 5,000xg for 5min.
2. Carefully open the tube and add 100ul of sterile water to dissolve the DNA.
3. Close the tube and incubate for 10 minutes at room temperature.
4. Briefly vortex the tube and then do a quick spin (less than 5000xg) to concentrate the liquid at the bottom.
5. Store the suspended plasmid at -20°C. The DNA is stable for at least one year from date of shipping when stored at -20°C.

**RefSeq:** [NM\\_006237.2](#), [NP\\_006228.2](#)

**RefSeq Size:** 3824 bp

**RefSeq ORF:** 1260 bp

**Locus ID:** 5457

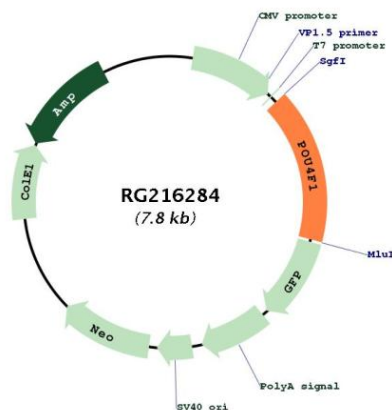
**UniProt ID:** [Q01851](#)

**Cytogenetics:** 13q31.1

**Protein Families:** Transcription Factors

**Gene Summary:** This gene encodes a member of the POU-IV class of neural transcription factors. This protein is expressed in a subset of retinal ganglion cells and may be involved in the developing sensory nervous system. This protein may also promote the growth of cervical tumors. A translocation of this gene is associated with some adult acute myeloid leukemias. [provided by RefSeq, Mar 2012]

## Product images:



Circular map for RG216284