

## Product datasheet for **RG216282**

### **RGPD6 (NM\_001037866) Human Tagged ORF Clone**

#### **Product data:**

Product Type:	Expression Plasmids
Product Name:	RGPD6 (NM_001037866) Human Tagged ORF Clone
Tag:	TurboGFP
Symbol:	RGPD6
Synonyms:	RanBP2L1; RanBP2L2; RGP6; RGPD7
Mammalian Cell Selection:	Neomycin
Vector:	pCMV6-AC-GFP (PS100010)
E. coli Selection:	Ampicillin (100 ug/mL)



[View online »](#)

**ORF Nucleotide Sequence:**

>RG216282 representing NM\_001037866  
 Red=Cloning site Blue=ORF Green=Tags(s)

TTTTGTAATACGACTCACTATAGGGCGGCCGGGAATTCGTCGACTGGATCCGGTACCGAGGAGATCTGCC  
 GCC**CGGATCGCC**

ATGAGGCGCAGCAAGGCCGATGTGGAGCGGTACGTCGCCTCGGTGCTGGGTCTCACCCCGTCGCCTCGAC  
 AGAAGTCAATGAAAGGATTCTATTTTGCAAAGCTGATTATGAAGCTAAAGAATATGATCTTGCTAAAAA  
 ATACATATGTACTIONTACATTAATGTGCAAGAGAGGGATCCCAAAGCTCACAGATTTCTGGGTCTTCTTTAT  
 GAATTGGAAGAAAAACACAGAGAAAGCCGTTGAATGTTACAGCGGTTTCAAGTAAACCCAACACAAAA  
 AAGATCTTGTTGAAGATTGCAGAATTGCTTTGTAATAATGATGTTACTGATGGAAGAGCAAAACTG  
 GGTCGAAAGAGCAGCAAACTTTCCAGGAAGTCTGCAATTTATAAACTAAAGGAACAGCTTCTAGAT  
 TGTGAAGTGAAGATGGATGGAATAAACTTTTGACTTGATTGATCAGAACTTTATGTAAGACCTGATG  
 ACGTCCATGTGAACATCCGGCTAGTGGAGTTGATCGCTCAACTAAAAGATTGAAGGATGCTGTGCCCA  
 CTGCCATGAGGCAGAGAGGAACATAGCTTTGCGTTCAAGTTTAGAGTGGAAATTCGTGTGTTACAGACC  
 CTTAAGGAATATCTGGAGTCTTTACAGTGTGGAGTCTGATAAAAAGTACTGGCAAGCAACCAATACAG  
 ACTTACTGCTGGCCTATGCTAATCTTATGCTTCTTACGCTTTCCACTAGAGATGTGCAGGAAAAATAGAGA  
 ATTACTGGAAAGTTTGTAGTGTCTTTCAGTCTGCGAAATCTTCTTTGGGTGGAATGATGAACTGTCA  
 GCTACTTTCTTAGAAATGAAAGGACATTTCTATATGATGCTGGTTCTCTGCTCTTGAAGATGGGTCAGC  
 ATGGTAATAATGTTCAATGGCGAGCTCTTTCTGAGCTGGCTGCATTGTGCTATCTCATAGCATTTCAAGT  
 TCCAAGACCAAAGATTAATTAAGAGAAGGTAAGCTGGACAAAACTGCTGGAATGATGGCCTGTGAC  
 CGACTGAGCCAATCAGGGCACATGTTGCTAAGCTTAAGCTGGAAGCAAGATTTCTTAAAGAGGTTG  
 TTGAAACTTTTGCCAACAAAAATGGGCAGTCTGCGTTATATGATGCTCTGTTTTCTAGTCACTCACCTAA  
 GGATACATCTTTTCTGGTAGCGATGATATTGGAAAAATGATGTACAAGAACCAGAGCTTGAAGATTTG  
 GCTAGATACGATGTTGGTCTATTTCGAGCACATAATGGTAGTCTTCAAGCATCTTACTTGGCTTGGCTTAC  
 AGTGAATTCATTGCCTGCTTTACCTGGAATCCGAAAAATGGCTAAAAACAGCTTTTCCATCGTTTGCCTCA  
 TGAAACCTCAAGGCTTGAACAAATGCGCCTGAATCAATATGATTTTAGATCTTGAAGTATTTCTCCTT  
 GGAGTAGTATATACCAGCCACTTACAATTAAGGAGAAATGTAATTTCCACCATAGCTCCTATCAGCCGT  
 TATGCCTGCCCTTCTCTGTGTAAACAGCTTTGTACAGAAAGACAAAAATCTTGGTGGGATGCGGTTTGT  
 TACTCTGATTCACAGAAAAGCAGTACCTGGAACTTGGCAAAATGAGACTTCTAGTTCAGCATGAAATA  
 AACACTCTAAGAGCCCAGGAAAAACATGGCCTTCAACCTGCTCTGCTGTACATTGGGCAAAATACCTTC  
 AGAAAACGGGCAGCGGTCTTAATCTTTTTATGGTCAACTAGAATACATAGGGAGAAGTGTTCATTATTG  
 GAAGAAAGTTTTGCCATTGTTGAAGATAATAAAGAAGAACAGTATTCTGAACCTATTGATCCTCTGTTT  
 AAACATTTTATAGTGTAGACATTCAGGCATCAGAAATGTTGAATATGAAGAAGACGCACACATAACTT  
 TTGCTATGTTGGATGCAGTAAATGGAAATATAGAAGATGCTGTGACTGCTTTTGAATCTATAAAAAGTGT  
 TGTTTCTTATTGGAACTTGCAGTATTTTTACAGGAAGGCAGAAGACATTGAAAATGATGCCCTTTCT  
 CCTGAAGAACAAGAAGATGCAGAAATATCTGACAAAGACCAGGGACTACCTAATAAAGATTATAGATG  
 ACGGTGATTCAAATCTTTCAGTGGTCAAGAAATGCCTGTGCCCTGGAGTCTGTAAAACAGATGCTTAA  
 TTCAGTCAATGCAGGAACCTCGAAGACTATAGTGAAGGAGTCTCTCTATAAAAATGGTTCTTTGCGAAAT  
 GCAGATTCAGAAAATAAACATTTACACCGTCTCCTACCAAATATTCATATACCAAGTAAAAGTTACA  
 AGTATTCTCCCGAAACACCACCTCGATGGACAGAAAGATCGGAATTTCTTACTGAATATGATTTGCCAACA  
 AGTAGAGGCCATTAAGAAAGAAATGCAGGAGTTGAACTAAATAGCAGTAAGTCAGCATCCCGTCATCGT  
 TGGCCACAGAGAATTATGGACCAGACTCGGTGCCTGATGGATATCAGGGGTCACAGACATTTTATGGGG  
 CTCCACTAACAGAAGCAGCACATCGTCATTTTACAATTGAGAAACATGGAGACTCCAAATGGATTATTTA  
 CAGTTTACAAAACAGCTTTGTGGCACTGAAAGGGCGAGAGCCAAGATCTCC

AGCGGACCGACGCGTACGCGGCCGCTCGAG - GFP Tag - GTTTAA

**Protein Sequence:** >RG216282 representing NM\_001037866  
 Red=Cloning site Green=Tags(s)

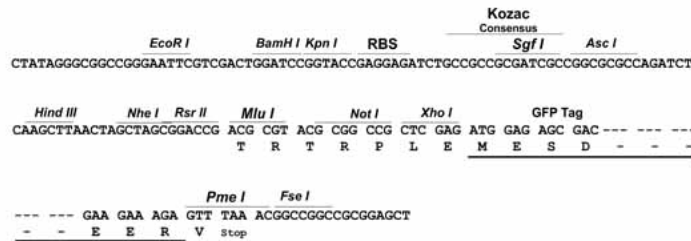
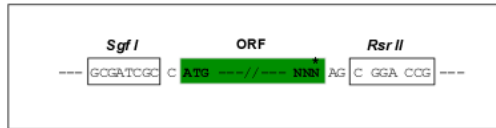
MRRSKADVERYVASVLGLTPSPRQKSMKGFYFAKLYYEAKYDLAKKYICTYINVQERDPKAHRFLGLLY  
 ELEENTEKAVECYRRSVELNPTQKDLVLKIAELLCKNDVTDGRAKYWVERAAKLPFGSPAIFYKLKEQLLD  
 CEGEDGWNKLFDLIQSELYVRPDDVHVNIIRLVELYRSTKRLKDAVAHCHEAERNIALRSSLEWNSCVVQT  
 LKEYLESLQCLESDKSDWQATNTDLLLAYANMLLTLSTRDVQENRELLESFDSALQSAKSSLGGNDELS  
 ATFLEMKGHFYMYAGSLLLLKMGQHGNNVQWRALSELAALCYLIAFQVPRPKIKLREGKAGQNLLEMMA  
 CDRLSQSGHMLLSL SRGKQDFLKEVVETFANKIGQSALYDALFSSQSPKDTSF LGSDDIGKIDVQPEPE  
 EDLARYDVGAIRAHNGSLQHLTWLGLQWNSLPALPGIRKWLKQLFHRLPHETSRLTNAPEPICILDLE  
 VLLGVVYTSHLQLKEKCNSHSSYQPLCLFPVCKQLCTERQKSWWDVAVCTLIHRKAVPGNLAKLRLLV  
 QHEINTLRAQEKHGLQPALLVHWAKYLQKTGSGLSFYGQLEYIGRSVHYWKKVPLLLKIKKNSIPE  
 PIDPLFKHFHSVDIQASEIVEYEEDAHTFAMLDVANGNIEDAVTAFESIKSVVSYWNLALIFHRKAE  
 DIENDALSPEEQEECRNYLTKTRDYLIKIIDGDSNLVSVKLPVPLESVKQMLNSVMQELEDYSEGG  
 PLYKNGSLRNADSEIKHSTPSPTKYSLSPSKSYKYSPEPPRWTEDRNSLLNMI CQQVEAIKKEMQ  
 ELKLNSSKSASRHRWPTENYGPDSVPDGYQGSQTFHGAPL TEAAHRHFTIEKHGDSKWIYRFTKQLC  
 GTERARAKIS

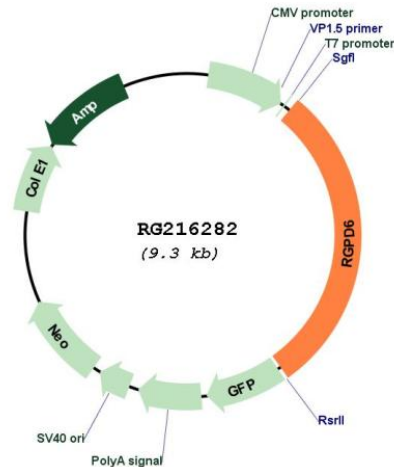
SGPTRRRLE - GFP Tag - V

**Restriction Sites:** SgfI-RsrII

**Cloning Scheme:**

Cloning sites used for ORF Shuttling:



**Plasmid Map:**


**ACCN:** NM\_001037866

**ORF Size:** 2712 bp

**OTI Disclaimer:** The molecular sequence of this clone aligns with the gene accession number as a point of reference only. However, individual transcript sequences of the same gene can differ through naturally occurring variations (e.g. polymorphisms), each with its own valid existence. This clone is substantially in agreement with the reference, but a complete review of all prevailing variants is recommended prior to use. [More info](#)

**OTI Annotation:** This clone was engineered to express the complete ORF with an expression tag. Expression varies depending on the nature of the gene.

**Components:** The ORF clone is ion-exchange column purified and shipped in a 2D barcoded Matrix tube containing 10ug of transfection-ready, dried plasmid DNA (reconstitute with 100 ul of water).

**Reconstitution Method:**

1. Centrifuge at 5,000xg for 5min.
2. Carefully open the tube and add 100ul of sterile water to dissolve the DNA.
3. Close the tube and incubate for 10 minutes at room temperature.
4. Briefly vortex the tube and then do a quick spin (less than 5000xg) to concentrate the liquid at the bottom.
5. Store the suspended plasmid at -20°C. The DNA is stable for at least one year from date of shipping when stored at -20°C.

**RefSeq:** [NM\\_001037866.1](#), [NP\\_001032955.1](#)

**RefSeq Size:** 3304 bp

**RefSeq ORF:** 2715 bp

**Locus ID:** 729540

**UniProt ID:** [Q99666](#)

**Cytogenetics:** 2q13

Protein Families:            Druggable Genome