

## Product datasheet for **RG216270**

### **REXO1L1 (REXO1L1P) (NM\_172239) Human Tagged ORF Clone**

#### **Product data:**

Product Type:	Expression Plasmids
Product Name:	REXO1L1 (REXO1L1P) (NM_172239) Human Tagged ORF Clone
Tag:	TurboGFP
Symbol:	REXO1L1
Synonyms:	GOR; REXO1L1
Mammalian Cell Selection:	Neomycin
Vector:	pCMV6-AC-GFP (PS100010)
E. coli Selection:	Ampicillin (100 ug/mL)



[View online »](#)

**ORF Nucleotide Sequence:**

>RG216270 representing NM\_172239  
 Red=Cloning site Blue=ORF Green=Tags(s)

TTTTGTAATACGACTCACTATAGGGCGGCCGGGAATTCGTCGACTGGATCCGGTACCGAGGAGATCTGCC  
 GCC**GCGATCGCC**

ATGTTGCGAGCCACAGCTCCCTGCTGGTCCCCCTGGATACCCAGAAGCTAAGAAGGTGGCCGAGGAGG  
 CGGCCCTGGAGGCAAGCCGCCATTTGGGAGGGGAGCAGAGCCAGGCCGGTCTCCGAAGGCAGCAAGAT  
 GTTGCAGCCACAGCTCCCTGCTGGTCCGCCCTGGATACCCAGAAGCTAAGAAGGTGGCCAAGGAGGCG  
 GCCCGGAGGCAAGCCGCCATTTGGGAGCGGAGCAGAGCCCGCCGGTCTCCGAAGGCAGCAAGATGT  
 TGCAGCCACAGCTCCCTGCTGGTCCACCTGGATACCCAGAAGCTAAGAAGGTGGCCGAGGAGGCGGC  
 CCTCGAGGCTCCAGAATCCACTGCCCTCTCATCAGCTGCCAGAGCTTCGGGCTCTGGGTGCCCCAG  
 ATGCACAAGCAGGCTCAGCATTTGTGGACATCCAGGCGGAGCCCAAAACAGGGGTCCGGCGGTGCCCC  
 CAGCGTGGCCCAAGATGGTGACGGAGTCGTACTTCCCTGCGCAGAGGGGATCGGCCCTGCCGTTGCC  
 AGCCGCCCAAGGCTGACAGAGAGGCCCTCGGGAGTCCGCATCTCAGCCCCAGGAAGAGGAAGACGATC  
 GCCCACTTCCAGCCCTTGCTTGGTACAGGTTACACAGATGCCAAGAGAACCCGGGTGGCCAGCAGCA  
 GCCAACGCTCCCGTGGCTCCAAGGTCCGCAGACAGCCAGGGAAGACGCGCAACAGGTCAGGGATGGCATG  
 CAAGACCACCGCCACCACAGCTCTAAGCGAATCGTCCGTCTGTCATCCTTACCGAGTTTGAATTTGAAG  
 AAACCCATTATCCTCCGAAGCTCTGGGTGCCAAGTCCCCACCGTCTCCGCCGAGGCTATCTCCAAGTGT  
 TCACCGAAGAGTGTCTCAAGTTCTGCGCTCCAAGCAGGAGGCCGAGGAGAAGGCCGTGAACGAGGAGAA  
 GGTGGCTACGACTGCAGCCCCAACAGAAGCAGGTACCTGAACGTGGTCTGAACACCCCTCAAGAGACTG  
 AAGGGCTGACCCCAAGTCCATGCCCGCCTCAGCAGGGCCGCCCTGTACAGCCGCTCCAGGAGTTCC  
 TGCTACCCAGGACAGCTCAAGGAGAACGGCTACCCCTCCCGCACCCGAGCGGCCCGAGCGCCGCT  
 CCTCTTCACTGGCCAGGGGAAGGGGCCCGGCGACTCCTCCTGTAGGGTCTGCTGCCGTTGTGGCACCGAG  
 TACCTGGTGTCTCCTCGGGCCGCTGTGTACGCGACAGTTGTGTTATTACTGGGGCGGGTCCGCT  
 CGAGCCAGGTGGCTGGAGGCCGGTTAGCCAGTACACCTGCTGTGCAGCTGCTCCTGGCTCTGTGGGCTG  
 CCAGGTGGCAAAGCAGCAGTGCAGGACGGCCGAAGGAGAGCCTCGATGGCTTCTGTGGAGACCTTCAAG  
 AAAGAGTTGTCCAGAGACGCTTATCCAGGAATCTACGCTTGGACTGTGAGATGTGCTACACCACGCATG  
 GCCTAGAGCTGACCCGCTCACCGTGGTGGACGCCGACATGCGAGTGGTGTACGACACCTTCGTCAAGCC  
 CGACAACGAGATCGTGGACTACAACACCAGTTTTCCGGAGTACCGAGGCCGACGTCGCCAAGACGAGC  
 ATCAGGTTGCCCAAGTCCAAGCCATCCTGCTGAGCTTTTTCAGCGCCAAACCATCCTCATCGGGCACA  
 GCCTGGAGAGCGACCTGCTGGCCCTGAAGCTCATCCACAGCACCGTGGTGGACACGGCCGTGCTCTCCC  
 GCACTACCTGGGTTTTCCCTACAAGCGCTCCCTCAGGAATCTCGCGGCCGACTACCTGGCACAGATCATC  
 CAGGACAGCCAGGACGGCCCAACTCCAGCGAGGACGCAAGCGCCTGCCTGCAGCTGGTGTGTGGAAGG  
 TCCGACAGCGGCCAGATCCAGCCACGCCACCGGTCCGCCTCTCCCGCCGCCCTGGCCTGTCCT

**ACGCGT**ACGCGGCCGCTCGAG – GFP Tag – GTTTAA

**Protein Sequence:** >RG216270 representing NM\_172239  
 Red=Cloning site Green=Tags(s)

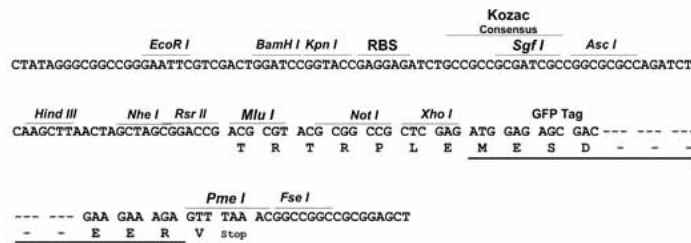
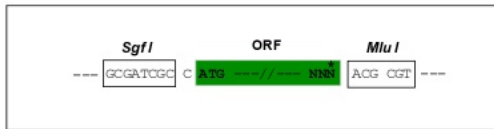
MLRATAPCWFPFGYPEAKKVAEEAALEASRHLGGEQSQAGAPEGSKMLRATAPCWFRPGYPEAKKVAKEA  
 APEASRHLGAEQSPAGAPEGSKMLRATAPCWFPFGYPEAKKVAEEAALEAPEFPLPSHQPAQSFGLWVPQ  
 MHKQASAFVDIQAEPQNRGPAVPPAWPKMVTESCYPFAQRGSACRLPAAPRLTERPSGVRI SAPRKRKTI  
 AHSSSPCLVTGYTDAKRTRVASSQSRSGSKVGRQPGKTRNRSGMACKTTATTSSKRIVRRASLPSLSLK  
 KPIILRSSGCQVPTVLRGGLQLFTEECLKFCASKQEAEEKALNEEKVAYDCSPNKNRYLNVVLTNLKRL  
 KGLTPSSMPGLSRAALYSRLQEFLLTQDQLKENGYPFPHPERPGGAVLFTGQKGPGDSSRCVCCRCGTE  
 YLVSSSGRCVRDQLCYHHWGRVRSQVAGGRVSQYTCAAAPGSVGCQVAKQHVRDGRKESLDGFVETFK  
 KELSRDAYPGIYALDCEMCYTTHGLEL TRVTVDADMRVYDTFVKPDNEIVDYNTRFSGVTEADVAKTS  
 ITLPQVQAILLSFFSAQITLIGHSLESDLLALKLIHSTVVDTAVLFPHYLGFPHYKRSRLNLAADYLAQII  
 QDSQDGHNSSEDAACLQLVMWVVRQRAIQPRHRSASPAALACP

TRTRPLE - GFP Tag - V

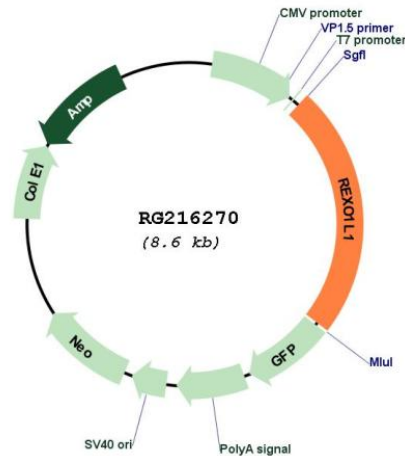
**Restriction Sites:** SgfI-MluI

**Cloning Scheme:**

Cloning sites used for ORF Shuttling:



## Plasmid Map:



ACCN: NM\_172239

ORF Size: 2025 bp

**OTI Disclaimer:** The molecular sequence of this clone aligns with the gene accession number as a point of reference only. However, individual transcript sequences of the same gene can differ through naturally occurring variations (e.g. polymorphisms), each with its own valid existence. This clone is substantially in agreement with the reference, but a complete review of all prevailing variants is recommended prior to use. [More info](#)

**OTI Annotation:** This clone was engineered to express the complete ORF with an expression tag. Expression varies depending on the nature of the gene.

**Components:** The ORF clone is ion-exchange column purified and shipped in a 2D barcoded Matrix tube containing 10ug of transfection-ready, dried plasmid DNA (reconstitute with 100 ul of water).

**Reconstitution Method:**

1. Centrifuge at 5,000xg for 5min.
2. Carefully open the tube and add 100ul of sterile water to dissolve the DNA.
3. Close the tube and incubate for 10 minutes at room temperature.
4. Briefly vortex the tube and then do a quick spin (less than 5000xg) to concentrate the liquid at the bottom.
5. Store the suspended plasmid at -20°C. The DNA is stable for at least one year from date of shipping when stored at -20°C.

**RefSeq:** [NM\\_172239.4](#), [NP\\_758439.4](#)

RefSeq Size: 7032 bp  
RefSeq ORF: 2027 bp  
Locus ID: 254958  
Cytogenetics: 8q21.2