

Product datasheet for **RG216262**

PPHLN1 (NM_201515) Human Tagged ORF Clone

Product data:

| | |
|---------------------------|---|
| Product Type: | Expression Plasmids |
| Product Name: | PPHLN1 (NM_201515) Human Tagged ORF Clone |
| Tag: | TurboGFP |
| Symbol: | PPHLN1 |
| Synonyms: | CR; HSPC206; HSPC232 |
| Mammalian Cell Selection: | Neomycin |
| Vector: | pCMV6-AC-GFP (PS100010) |
| E. coli Selection: | Ampicillin (100 ug/mL) |
| ORF Nucleotide Sequence: | >RG216262 representing NM_201515 Red=Cloning site Blue=ORF Green=Tags(s) |

TTTTGTAATACGACTCACTATAGGGCGGCCGGAATTCGTCGACTGGATCCGGTACCGAGGAGATCTGCC
GCC**CGATCGCC**

ATGGCTTACAGAAGACGAAATGTGGTCTGAGGGACGATGAATATGAAAGAATCCGAGAGAACGAG
CACCTCCTCGAAGTCATCCAGTGATGGCTACAATAGACTAGTTAATATTGTGCCAAAGAAACCACCACT
GCTAGACAGACCTGGTGAAGGAAGCTACAATAGATATTACAGTCATGTTGATTACCGAGACTATGACGAG
GGCCGAGTTTTTCTCATGATCGAAGAAGTGGTCCACCTCACAGAGGAGATGAATCTGGTTATAGATGGA
CAAGAGACGATCATTCTGCAAGCAGGCAACCTGAATACAGGGACATGAGAGATGGCTTTAGAAGAAAAAG
TTTCTACTCTTCCATTATGCGAGAGAGCGGTCTCCTTATAAAAGGGACAATACTTTTTTTCAGAGAATCA
CCTGTTGGCCGAAAGGATTCTCCACACAGCAGATCTGGTTCAGTGTGAGTAGCAGAAGCTACTCTCCAG
AAAGGAGCAAATCATACTCTTCCATCAGTCTCAACATAGAAAAGTCCGTGCGTCTGGTGCCTCCTACAA
ACGGCAGAATGAAGGAAATCCTGAAAGAGATAAAGAGAGGCCTGTCCAGTCTTTGAAAACATCAAGAGAT
ACTTCACCCTCAAGTGGTTCAGCAGTTTCTTATCAAAGGTGTTAGACAAAACCCAGTAGGCTAACTGAAA
AGGAACCTGTGAGGCTGCAAGCAAGTGGGCTGCTGAAAAGCTAGAGAAATCAGATGAAAGTAACCTGCC
TGAAATTTCTGAGTATGAGGCGGGATCCACAGCACCATTGTTTACTGACCAGCCAGAGGAACCTGAGTCA
AACACAACACATGGGATAGAATTTTGAAGATAGTCAGCTAACCACTCGCTCTAAAGCAATAGCATCAA
AAACCAAAGAGATTGAACAGGTTTACCGACAAGACTGTGAAACTTTCGGGATGGTGGTAAAATGCTGAT
TGAAAAAGATCCTTCATTAGAAAAGTCTATACAGTTTGCATTGAGGCAGAATTTACATGAAATAGGTGAG
CGGTGTGTTGAAGAACTCAAGCATTTCATTGCAGAGTATGATACTTCCACTCAAGATTTTGGAGAGCCTT
TT

ACGCGTACGCGGCCGCTCGAG - GFP Tag - GTTTAA



[View online »](#)

Protein Sequence: >RG216262 representing NM_201515
 Red=Cloning site Green=Tags(s)

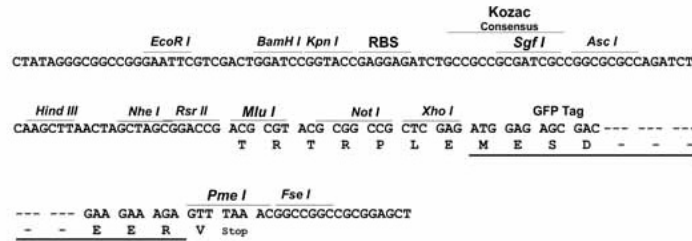
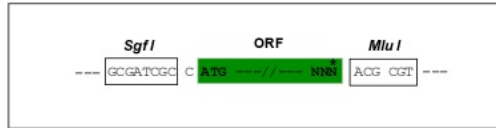
MAYRRDEMWSEGRYEYERIPRERAPPRSHPSDGYNRLVNIVPKKPPLLDPRPGEESYNRYSSHVDYRDYDE
 GRSF SHDRRSGPPHRGDESGYRWRDDHSASRQPEYRDMRDGFRKSFYSSHYARERSPYKRDNTFFRES
 PVGRKDSPHSRSGSSVSSRSYSPERSKSYSFHQSQHRKSVRPGASYKRQNEGNPERDKERPVSQSLKTSRD
 TSPSSGSAVSSSKVLDKPSRLTEKELAEAAASKWAAEKLEKSDENLPEISEYEAGSTAPLFTDQPEEPES
 NTTHGIELFEDSQLTTRSKAIAASKTKEIEQVYRQDCETF GMVVKMLIEKDP SLEKSIQFALRQNLHEIGE
 RCVEELKHFI AEYDTSTQDFGEPF

TRTRPLE - GFP Tag - V

Restriction Sites: SgfI-MluI

Cloning Scheme:

Cloning sites used for ORF Shuttling:



ACCN: NM_201515

ORF Size: 1122 bp

OTI Disclaimer: The molecular sequence of this clone aligns with the gene accession number as a point of reference only. However, individual transcript sequences of the same gene can differ through naturally occurring variations (e.g. polymorphisms), each with its own valid existence. This clone is substantially in agreement with the reference, but a complete review of all prevailing variants is recommended prior to use. [More info](#)

OTI Annotation: This clone was engineered to express the complete ORF with an expression tag. Expression varies depending on the nature of the gene.

Components: The ORF clone is ion-exchange column purified and shipped in a 2D barcoded Matrix tube containing 10ug of transfection-ready, dried plasmid DNA (reconstitute with 100 ul of water).

Reconstitution Method:

1. Centrifuge at 5,000xg for 5min.
2. Carefully open the tube and add 100ul of sterile water to dissolve the DNA.
3. Close the tube and incubate for 10 minutes at room temperature.
4. Briefly vortex the tube and then do a quick spin (less than 5000xg) to concentrate the liquid at the bottom.
5. Store the suspended plasmid at -20°C. The DNA is stable for at least one year from date of shipping when stored at -20°C.

RefSeq: [NM_201515.1, NP_958923.1](#)

RefSeq Size: 1720 bp

RefSeq ORF: 1125 bp

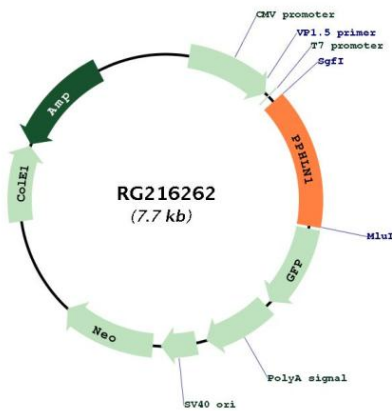
Locus ID: 51535

UniProt ID: [Q8NEY8](#)

Cytogenetics: 12q12

Gene Summary: The protein encoded by this gene is one of the several proteins that become sequentially incorporated into the cornified cell envelope during the terminal differentiation of keratinocyte at the outer layers of epidermis. This protein interacts with periplakin, which is known as a precursor of the cornified cell envelope. The cellular localization pattern and insolubility of this protein suggest that it may play a role in epithelial differentiation and contribute to epidermal integrity and barrier formation. Multiple alternatively spliced transcript variants encoding distinct isoforms have been observed. [provided by RefSeq, Jul 2008]

Product images:



Circular map for RG216262