

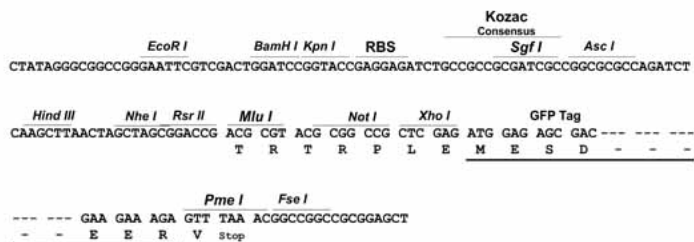
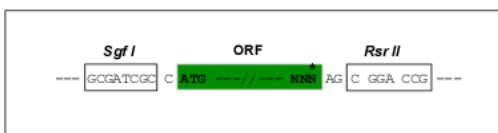
## Product datasheet for **RG216257**

### SIM2 (NM\_009586) Human Tagged ORF Clone

#### Product data:

Product Type:	Expression Plasmids
Product Name:	SIM2 (NM_009586) Human Tagged ORF Clone
Tag:	TurboGFP
Symbol:	SIM2
Synonyms:	bHLHe15; HMC13F06; HMC29C01; SIM
Mammalian Cell Selection:	Neomycin
Vector:	pCMV6-AC-GFP (PS100010)
E. coli Selection:	Ampicillin (100 ug/mL)
Restriction Sites:	Sgfl-RsrII
Cloning Scheme:	

Cloning sites used for ORF Shutting:



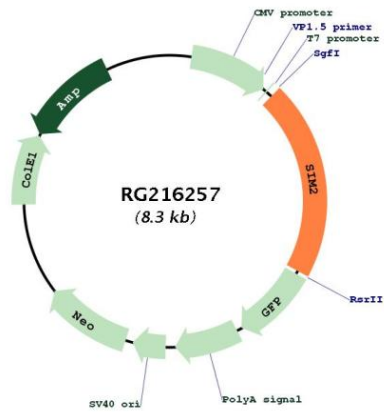
ACCN:	NM_009586
ORF Size:	1710 bp



[View online »](#)

<b>OTI Disclaimer:</b>	The molecular sequence of this clone aligns with the gene accession number as a point of reference only. However, individual transcript sequences of the same gene can differ through naturally occurring variations (e.g. polymorphisms), each with its own valid existence. This clone is substantially in agreement with the reference, but a complete review of all prevailing variants is recommended prior to use. <a href="#">More info</a>
<b>OTI Annotation:</b>	This clone was engineered to express the complete ORF with an expression tag. Expression varies depending on the nature of the gene.
<b>Components:</b>	The ORF clone is ion-exchange column purified and shipped in a 2D barcoded Matrix tube containing 10ug of transfection-ready, dried plasmid DNA (reconstitute with 100 ul of water).
<b>Reconstitution Method:</b>	<ol style="list-style-type: none"><li>1. Centrifuge at 5,000xg for 5min.</li><li>2. Carefully open the tube and add 100ul of sterile water to dissolve the DNA.</li><li>3. Close the tube and incubate for 10 minutes at room temperature.</li><li>4. Briefly vortex the tube and then do a quick spin (less than 5000xg) to concentrate the liquid at the bottom.</li><li>5. Store the suspended plasmid at -20°C. The DNA is stable for at least one year from date of shipping when stored at -20°C.</li></ol>
<b>RefSeq:</b>	<a href="#">NM_009586.1</a> , <a href="#">NP_033664.1</a>
<b>RefSeq Size:</b>	2823 bp
<b>RefSeq ORF:</b>	1713 bp
<b>Locus ID:</b>	6493
<b>UniProt ID:</b>	<a href="#">Q14190</a>
<b>Cytogenetics:</b>	21q22.13
<b>Protein Families:</b>	Druggable Genome, Transcription Factors
<b>Gene Summary:</b>	This gene represents a homolog of the Drosophila single-minded (sim) gene, which encodes a transcription factor that is a master regulator of neurogenesis. The encoded protein is ubiquitinated by RING-IBR-RING-type E3 ubiquitin ligases, including the parkin RBR E3 ubiquitin protein ligase. This gene maps within the so-called Down syndrome chromosomal region, and is thus thought to contribute to some specific Down syndrome phenotypes. Alternative splicing of this gene results in multiple transcript variants. [provided by RefSeq, Sep 2014]

Product images:



Circular map for RG216257