

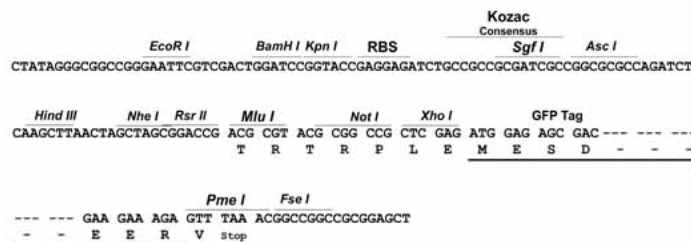
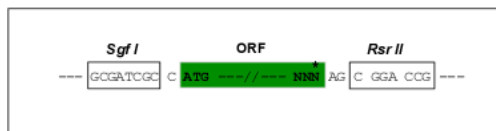
## Product datasheet for **RG216237**

### PPAR alpha (PPARA) (NM\_001001928) Human Tagged ORF Clone

#### Product data:

|                           |  |
|---------------------------|--|
| Product Type:             | Expression Plasmids                                      |
| Product Name:             | PPAR alpha (PPARA) (NM_001001928) Human Tagged ORF Clone |
| Tag:                      | TurboGFP   |
| Symbol:                   | PPAR alpha   |
| Synonyms:                 | hPPAR; NR1C1; PPAR; PPAR-alpha; PPARalpha                |
| Mammalian Cell Selection: | Neomycin   |
| Vector:                   | pCMV6-AC-GFP (PS100010)                                  |
| E. coli Selection:        | Ampicillin (100 ug/mL)                                   |
| Restriction Sites:        | SgfI-RsrII   |
| Cloning Scheme:           |  |

Cloning sites used for ORF Shutting:



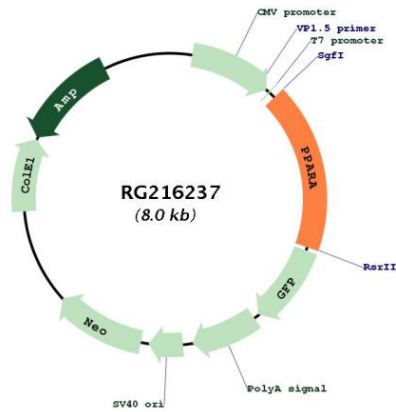
|           |              |
|-----------|--------------|
| ACCN:     | NM_001001928 |
| ORF Size: | 1404 bp      |



[View online »](#)

|                               |   |
|-------------------------------|---|
| <b>OTI Disclaimer:</b>        | The molecular sequence of this clone aligns with the gene accession number as a point of reference only. However, individual transcript sequences of the same gene can differ through naturally occurring variations (e.g. polymorphisms), each with its own valid existence. This clone is substantially in agreement with the reference, but a complete review of all prevailing variants is recommended prior to use. <a href="#">More info</a>  |
| <b>OTI Annotation:</b>        | This clone was engineered to express the complete ORF with an expression tag. Expression varies depending on the nature of the gene.  |
| <b>Components:</b>            | The ORF clone is ion-exchange column purified and shipped in a 2D barcoded Matrix tube containing 10ug of transfection-ready, dried plasmid DNA (reconstitute with 100 ul of water).  |
| <b>Reconstitution Method:</b> | <ol style="list-style-type: none"><li>1. Centrifuge at 5,000xg for 5min.</li><li>2. Carefully open the tube and add 100ul of sterile water to dissolve the DNA.</li><li>3. Close the tube and incubate for 10 minutes at room temperature.</li><li>4. Briefly vortex the tube and then do a quick spin (less than 5000xg) to concentrate the liquid at the bottom.</li><li>5. Store the suspended plasmid at -20°C. The DNA is stable for at least one year from date of shipping when stored at -20°C.</li></ol>   |
| <b>RefSeq:</b>                | <a href="#">NM_001001928.3</a>  |
| <b>RefSeq Size:</b>           | 9965 bp   |
| <b>RefSeq ORF:</b>            | 1407 bp   |
| <b>Locus ID:</b>              | 5465  |
| <b>UniProt ID:</b>            | <a href="#">Q07869</a>  |
| <b>Cytogenetics:</b>          | 22q13.31  |
| <b>Protein Families:</b>      | Druggable Genome, Nuclear Hormone Receptor, Transcription Factors   |
| <b>Protein Pathways:</b>      | Adipocytokine signaling pathway, PPAR signaling pathway   |
| <b>Gene Summary:</b>          | Peroxisome proliferators include hypolipidemic drugs, herbicides, leukotriene antagonists, and plasticizers; this term arises because they induce an increase in the size and number of peroxisomes. Peroxisomes are subcellular organelles found in plants and animals that contain enzymes for respiration and for cholesterol and lipid metabolism. The action of peroxisome proliferators is thought to be mediated via specific receptors, called PPARs, which belong to the steroid hormone receptor superfamily. PPARs affect the expression of target genes involved in cell proliferation, cell differentiation and in immune and inflammation responses. Three closely related subtypes (alpha, beta/delta, and gamma) have been identified. This gene encodes the subtype PPAR-alpha, which is a nuclear transcription factor. Multiple alternatively spliced transcript variants have been described for this gene, although the full-length nature of only two has been determined. [provided by RefSeq, Jul 2008] |

Product images:



Circular map for RG216237