

## Product datasheet for **RG216234**

### **C11orf72 (NM\_173578) Human Tagged ORF Clone**

#### Product data:

**Product Type:** Expression Plasmids  
**Product Name:** C11orf72 (NM\_173578) Human Tagged ORF Clone  
**Tag:** TurboGFP  
**Symbol:** C11orf72  
**Synonyms:** FLJ90834, MGC129824, MGC129825  
**Mammalian Cell Selection:** Neomycin  
**Vector:** pCMV6-AC-GFP (PS100010)  
**E. coli Selection:** Ampicillin (100 ug/mL)  
**ORF Nucleotide Sequence:** >RG216234 representing NM\_173578  
**Red=Cloning site Blue=ORF Green=Tags(s)**

TTTTGTAATACGACTCACTATAGGGCGCCGGGAATTCGTCGACTGGATCCGGTACCGAGGAGATCTGCC  
GCC**CGATCGCC**

ATGACACAACCTGCCAGAAGCTCGGCCTGAGGTCTCCTAACAACAAATCCCCACTGGTCCCCACCCACTGG  
AGCACCTACTTGCCAGGCTTCTCAAGCGAAGAAGGAGATCCACTCTGATGTCGTCTCCAGGAGCCTTCT  
CTGCAGCATCTCAGGTCTGGCTCTCACCTCCTCAGCACCCATCCCATCCTGTGTCACTCTGTATATCAG  
CCTCCCCAGCCAGCCTCCAGGCCACAAGCCAAGAGGTATCAAGGGCTCCTCCCTGTCCACTGGCCCCAC  
ATCCACTGTGTCTATCTGGTCAACTTTACCTTCCAACATTCCTGCACAGTGATAGATGGCTGTGGCCC  
TGTCTCTCTCACCTGAAATTAACAATGTATCCTTGGGGCTCCACCCCTCACATCTTGGCTCCTCCAGC  
CCCTTCTCTGCAAACATGGAACAGTGGGATTATTATAAATCTCAGACCCGTTTTGGCCCTTCTGCCTG  
AGAGTTTTTGTGGTTCCCACTGCCCTCAGAACAAGCTCAAGACCCCTTGGCCTGGCATTCAAGGTCTT  
TTGTGCTGCCACCTGTCAACCTCCCACTTCCAGCTCCTTTGGCTTTGCCATACAAGCTGGATCTGCAC  
CAGAGGATCTGTCTTCTCCCACTTGGCCCTAGTCTCCTAGGAGCCCTTTGGACGTCACTCCCCAG  
GAAGCTTCTGCAACCACCTACAACCGTCCCTATAAAGTTTATAAAACCAAT

**ACGCGTACGCGGCCGCTCGAG** - GFP Tag - GTTTAA



[View online »](#)

**Protein Sequence:** >RG216234 representing NM\_173578  
Red=Cloning site Green=Tags(s)

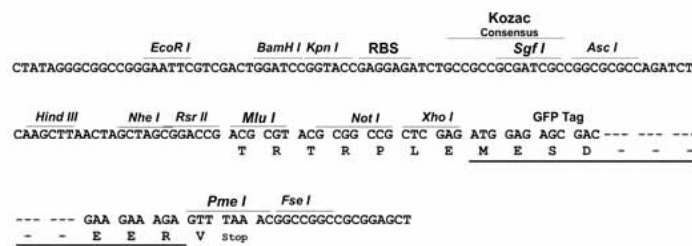
MTQLPELGLRSPNNKSPGPHLEHLLARLLKRRRSTLMSSPRSLLCISGPGSHLLSTHPILCHSVYQ  
 PPQPASRPQAKRYQGLLPVPLAPHPLCLSGQLYLPNIPCTVIDGCGPVIHKLKLTMPWGLPPSHLGSS  
 PFSANMEQWDYKSRTRFAPFLPESFCGSPLPSEQSSRPFGLAFKVLCAATCQPPQFQLLWLCPYKLDLH  
 QRICLPPNLALVLLGALWTSPPPGSFLQPPYNRPYKLYKTN

TRTRPLE - GFP Tag - V

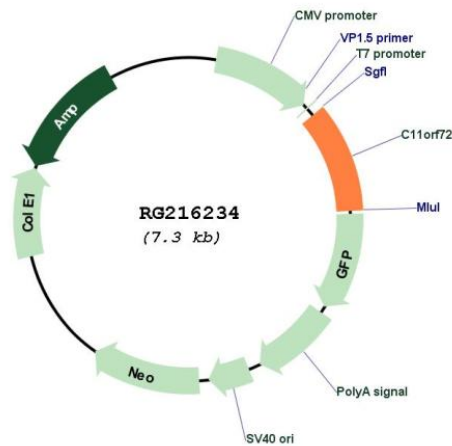
**Restriction Sites:** SgfI-MluI

**Cloning Scheme:**

Cloning sites used for ORF Shutting:



**Plasmid Map:**



**ACCN:** NM\_173578

**ORF Size:** 753 bp

<b>OTI Disclaimer:</b>	The molecular sequence of this clone aligns with the gene accession number as a point of reference only. However, individual transcript sequences of the same gene can differ through naturally occurring variations (e.g. polymorphisms), each with its own valid existence. This clone is substantially in agreement with the reference, but a complete review of all prevailing variants is recommended prior to use. <a href="#">More info</a>
<b>OTI Annotation:</b>	This clone was engineered to express the complete ORF with an expression tag. Expression varies depending on the nature of the gene.
<b>Components:</b>	The ORF clone is ion-exchange column purified and shipped in a 2D barcoded Matrix tube containing 10ug of transfection-ready, dried plasmid DNA (reconstitute with 100 ul of water).
<b>Reconstitution Method:</b>	<ol style="list-style-type: none"><li>1. Centrifuge at 5,000xg for 5min.</li><li>2. Carefully open the tube and add 100ul of sterile water to dissolve the DNA.</li><li>3. Close the tube and incubate for 10 minutes at room temperature.</li><li>4. Briefly vortex the tube and then do a quick spin (less than 5000xg) to concentrate the liquid at the bottom.</li><li>5. Store the suspended plasmid at -20°C. The DNA is stable for at least one year from date of shipping when stored at -20°C.</li></ol>
<b>RefSeq:</b>	<a href="#">NM_173578.1</a> , <a href="#">NP_775849.1</a>
<b>RefSeq Size:</b>	2431 bp
<b>RefSeq ORF:</b>	755 bp
<b>Locus ID:</b>	283135
<b>Cytogenetics:</b>	11q13.2