

## Product datasheet for **RG216228**

### Mitofilin (IMMT) (NM\_001100170) Human Tagged ORF Clone

#### Product data:

Product Type:	Expression Plasmids
Product Name:	Mitofilin (IMMT) (NM_001100170) Human Tagged ORF Clone
Tag:	TurboGFP
Symbol:	IMMT
Synonyms:	HMP; Mic60; MICOS60; MINOS2; P87; P87/89; P89; PIG4; PIG52
Mammalian Cell Selection:	Neomycin
Vector:	pCMV6-AC-GFP (PS100010)
E. coli Selection:	Ampicillin (100 ug/mL)



[View online »](#)

**ORF Nucleotide Sequence:**

>RG216228 representing NM\_001100170  
 Red=Cloning site Blue=ORF Green=Tags(s)

TTTTGTAATACGACTCACTATAGGGCGGCCGGGAATTCGTCGACTGGATCCGGTACCGAGGAGATCTGCC  
 GCC**CGCATCGCC**

ATGCTCGGGCCTGTCTAGTTATCGGGTGTGACCGCCGCCCCAGAGTTGTCTCTGTGGGAAGTTTGTCC  
 TCCGTCCATTGCGACCATGCCGCAGATACTCTACTTCAGGCAGCTCTGGGTTGACTACTGGCAAAATTGC  
 TGGAGCTGGCCTTTTGTGGTGGAGGATTGGTGGCACTATCCTATATGCCAAATGGGATCCCAT  
 TTCCGGGAAAGTGTAGAGAAAACCATACCTTACTCAGACAACTCTTCGAGATGGTCTTGGTCTCGAG  
 CTTATAATGTTCCATTGCCAAAGAAATCGATTAGTCCGGTCCACTAAAAATCTCTAGTGTATCAGAAGT  
 AATGAAAGAACTAAACAGCCTGCCTCACAACTCCAAAAACAAAAGGAGATACTCCAGCTTCAGCAACA  
 GCAGGTGATACCTGTCCGTCCAGCCCTGCAGTTCAGCCTGAGGAATCTTTAAAACTGATCACCCCTG  
 AAATTGGTGAAGGAAAACCCACACCTGCCTTTCAGAAGAAGCATCCTCATCTTCTATAAGGGAGCGACC  
 ACCTGAAGAAGTTCAGCTCGCCTTGCACAACAGGAAAAACAAGAACAAGTTAAAATTGAGTCTCTAGCC  
 AAGAGCTTAGAAGATGCTCTGAGGCAAACTGCAAGTGTCACTCTGCAGGCTATTGCAGCTCAGAATGCTG  
 CGGTCCAGGCTGTCAATGCACACTCCAACATATTGAAAGCCGCCATGGACAATTCTGAGATTGCAGGCGA  
 GAAGAAATCTGCTCAGTGGCGCACAGTGGAGGGTGCATTGAAGGAACGCAGAAAGGCAGTAGATGAAGCT  
 GCCGATGCCCTTCTCAAAGCCAAAGAAGAGTTAGAGAAGATGAAAAGTGTGATTGAAAATGCCAAAGAAA  
 AAGAGGTTGCTGGGGCCAAAGCCTCATATAACTGCTGCAGAGGGTAAACTTCACAACATGATAGTTGATCT  
 GGATAATGTGGTCAAAAAGGTCGAAGCAGCTCAGTCTGAGGCTAAGGTTGATCTCAGTATCATGAGCTG  
 GTGGTCCAAGCTCGGGATGACTTTAAACGAGAGCTGGACAGTATTACTCCAGAAGTCTTCTCTGGGTGGA  
 AAGGAATGAGTGTTCAGACTTAGCTGACAAGCTCTCTACTGATGATCTGAACTCCCTCATTGCTCATGC  
 ACATCGTCGATTGATCAGCTGAACAGAGAGCTGGCAGAACAGAAGGCCACCGAAAAGCAGCACATCACG  
 TTAGCCTTGAGAGAAACAAAAGCTGGAAGAAAAGCGGGCATTGACTCTGCAGTAGCAAAAGCATTAGAAC  
 ATCACAGAAGTGAATACAGGCTGAACAGGACAGAAAAGATAGAAGAAGTCAGAGATGCCATGAAAATGA  
 AATGAGAACCCAGCTTCGCCGACAGGCAGCTGCCACACTGATCACTTGGCAGATGTCTTAGGGTACAA  
 GAACAGGAATTGAAGTCTGAATTTGAGCAGAACCTGTCTGAGAACTCTCTGAACAAGAATTACAATTTCT  
 GTCGTCTCAGTCAAGAGCAAGTTGACAACCTTACTCTGGATATAAATACTGCCTATGCCAGACTCAGAGG  
 AATCGAACAGGCTGTTCCAGAGCCATGCAGTTGCTGAAGAGGAAGCCAGAAAAGCCCACTCTGGCTT  
 TCAGTGGAGGCATTAAGTACAGCATGAAGACCTCATCTGCAGAAACACCTACTATCCCCTGGGTAGTG  
 CAGTTGAGGCCATCAAAGCCAAGTCTGATAATGAATTCACCCAAGCTTTAACCGCAGCTATCCCTCC  
 AGAGTCCCTGACCCGTGGGGTGTACAGTGAAGAGACCCTTAGAGCCCGTTTCTATGCTGTTCAAAAAGT  
 GCCCGAAGGGTAGCAATGATTGATGAAACCAGAAATAGCTTGTACCAGTACTTCTCCTACCTACAGT  
 CCCTGCTCCTATCCCACCTCAGCAACTGAAGCCGCCCCAGAGCTCTGCCCTGAGGATATAAACACATT  
 TAAATTACTGTATATGCTTCTATTGCATTGAGCATGGTGTCTGGAGCTAGCAGCAAAGTTTGTCAAT  
 CAGCTGAAGGGGGAATCCAGACGAGTGGCACAGGACTGGCTGAAGGAAGCCGAATGACCCTAGAAACGA  
 AACAGATAGTGGAAATCCTGACAGCATATGCCAGCGCCGTAGGAATAGGAACCACTCAGGTGCAGCCAGA  
 G

**ACGCGTACGCGGCCGCTCGAG** – GFP Tag – GTTTAA

Protein Sequence: >RG216228 representing NM\_001100170  
 Red=Cloning site Green=Tags(s)

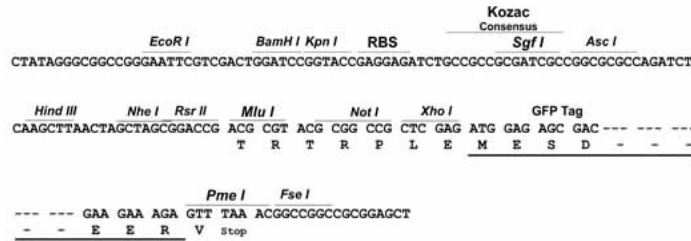
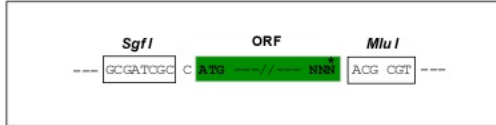
MLRACQLSGVTAQAQSCLCGKFVLRPLRPCRRYSTSGSSGLTTGKIAGAGLLFVGGGIGGTILYAKWDSH  
 FRESVEKTIPIYSDKLFEMVLGPAAYNVPLPKKSIQSGPLKISSVSEVMKESKQPASQLQKQKGDTPASAT  
 AGDTLSVPAPAVQPEESLKTDPHEIGEGKPTPALSEEASSSSIRERPPEEVAARLAQQEKQEQVKIESLA  
 KSLEDALRQTASVTLQAIAAQNAAVQAVNAHSNLIKAAAMDNSEIAGEKKS AQWRTVEGALKERRKAVDEA  
 ADALLKAKEELEKMKSVIENAKKKEVAGAKPHITAAEGKLHNMIVDLDNVVKKVQAAQSEAKVVSQYHEL  
 VYQARDDFKRELD SITPEVLPGWKGMSVSDLADKLSTDDLNSLIAHAHRRIDQLNRELAEQKATEKQHIT  
 LALEKQKLEEKRAFDSAVAKALEHHRSEIQAEQDRKIEEVRDAMENEMRTLRRQAAAHTDHLRDVLRVQ  
 EQELKSEFEQNLSEKLSEQELQFRRLSQEQVDNFTLDINTAYARLRGIEQAVQSHAVAEERAKAHQLWL  
 SVEALKYSMTSSAETPTIPLGSAVEAIKANCSDNEFTQALTAAPPESLTRGVYSEETLRARFYAVQKL  
 ARRVMIDETRNSLYQYFLSYLQSLLLFPPQQLKPPPELCPEDINTFKLLSYASYCIEHGDLELAQFVN  
 QLKGESRRVAQDWLKEARMTLETKQIVEILTAYASAVGIGTTQVQPE

TRTRPLE - GFP Tag - V

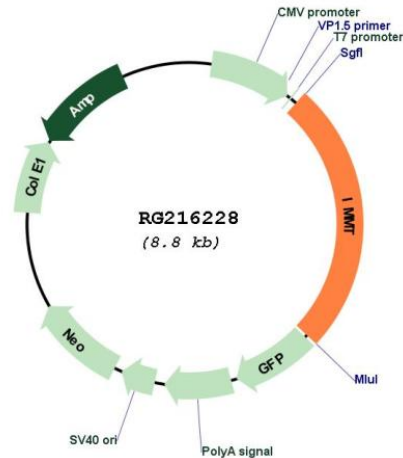
Restriction Sites: SgfI-MluI

Cloning Scheme:

Cloning sites used for ORF Shutting:



## Plasmid Map:



ACCN: NM\_001100170

ORF Size: 2241 bp

**OTI Disclaimer:** The molecular sequence of this clone aligns with the gene accession number as a point of reference only. However, individual transcript sequences of the same gene can differ through naturally occurring variations (e.g. polymorphisms), each with its own valid existence. This clone is substantially in agreement with the reference, but a complete review of all prevailing variants is recommended prior to use. [More info](#)

**OTI Annotation:** This clone was engineered to express the complete ORF with an expression tag. Expression varies depending on the nature of the gene.

**Components:** The ORF clone is ion-exchange column purified and shipped in a 2D barcoded Matrix tube containing 10ug of transfection-ready, dried plasmid DNA (reconstitute with 100 ul of water).

**Reconstitution Method:**

1. Centrifuge at 5,000xg for 5min.
2. Carefully open the tube and add 100ul of sterile water to dissolve the DNA.
3. Close the tube and incubate for 10 minutes at room temperature.
4. Briefly vortex the tube and then do a quick spin (less than 5000xg) to concentrate the liquid at the bottom.
5. Store the suspended plasmid at -20°C. The DNA is stable for at least one year from date of shipping when stored at -20°C.

RefSeq: [NM\\_001100170.1](#), [NP\\_001093640.1](#)

RefSeq Size: 2985 bp

RefSeq ORF: 2244 bp

Locus ID: 10989

UniProt ID: [Q16891](#)

Cytogenetics: 2

**Gene Summary:** Component of the MICOS complex, a large protein complex of the mitochondrial inner membrane that plays crucial roles in the maintenance of crista junctions, inner membrane architecture, and formation of contact sites to the outer membrane. Plays an important role in the maintenance of the MICOS complex stability and the mitochondrial cristae morphology (PubMed:22114354, PubMed:25781180).[UniProtKB/Swiss-Prot Function]