

## Product datasheet for **RG216225**

### KCNT2 (NM\_198503) Human Tagged ORF Clone

#### Product data:

Product Type:	Expression Plasmids
Product Name:	KCNT2 (NM_198503) Human Tagged ORF Clone
Tag:	TurboGFP
Symbol:	KCNT2
Synonyms:	EIEE57; KCa4.2; SLICK; SLO2.1
Mammalian Cell Selection:	Neomycin
Vector:	pCMV6-AC-GFP (PS100010)
E. coli Selection:	Ampicillin (100 ug/mL)
ORF Nucleotide Sequence:	>RG216225 representing NM_198503 Red=Cloning site Blue=ORF Green=Tags(s)

TTTTGTAATACGACTCACTATAGGGCGGCCGGAATTCGTCGACTGGATCCGGTACCGAGGAGATCTGCC  
GCC**CGATCGCC**

ATGGTTGATTTGGAGAGCGAAGTGCCCCCTCGCCTCCCAGGTACAGTTTCGAGATTTGCTGCTAGGGG  
ACCAAGGATGGCAAACGACGACAGGGTACAAGTTGAATTCTATGAATGAAAACATTTAAAGAAAG  
ACTAAAATTATTTTTCATAAAAAACCAGAGATCAAGTCTAAGGATACGCCTGTTCAATTTTCTCTCAA  
TTACTAAGCTGCTTATTATACATAATCCGAGTACTACTAGAAAACCCCTCACAAGGAAATGAATGGTCTC  
ATATCTTTTGGGTGAACAGAAGTCTACCTTTGTGGGGCTTACAGTTTCAGTGGCATTGATAAGTCTGTT  
TGAACAATATTACTTGGTTATCTTAGTTATAAGGAAACATCTGGGAACAGATTTTACGAATACCCCTTC  
ATCTTGAAATAATTAATGCAGTTCCTTCATTATCTCAATATTCGGCCTTCCTTAAGGAATCTATTTG  
TCCCAGTCTTTCTGAACTGTTGGCTTGCCAAACATGCCTTGAAAATATGATTAATGATCTACACAGAGC  
CATTACAGCGTACACAGTCTGCAATGTTTAAATCAAGTTTGAATTTAATATCTACATTACTATGCCTTATC  
TTCACCTGCATTTGTGGGATCCAACATCTGGAACGAATAGGAAAGAAGCTGAATCTCTTTGACTCCCTTT  
ATTTCTGCATTGTGACGTTTTCTACTGTGGGCTTCGGGATGTCCTCCTGAAACATGGTCTCCAAGCT  
TTTTGTAGTTGCTATGATTTGTGTTGCTCTTGTGGTTCTACCCATACAGTTTGAACAGCTGGCTTATTTG  
TGGATGGAGAGACAAAAGTCAGGAGGAACTATAGTCGACATAGAGCTCAAACGAAAAGCATGTCGTCC  
TGTGTGCAGCTCACTGAAGATTGATTTACTTATGGATTTTTAAATGAATTTCTATGCTCATCTAGGCT  
CCAGGATTATTATGTGGTGATTTTGTGCTCTACTGAAATGGATGTACAGTTTCGAAGGGTACTGCAGATT  
CCAATGTGGTCCCAACGAGTTATCTACCTTCAAGTTTCAGCCCTTAAAGATCAAGACCTATTGAGAGCAA  
AGATGGATGACGCTGAGGCTGTTTTATTCTCAGTAGCCGTTGTGAAGTGGATAGGACATCATCTGATCA  
CCAAACAATTTGAGAGCATGGGCTGTGAAAGATTTTGTCCAAATTTGCTTTGTATGTCCAGATATTA  
AAGCCTGAAAATAAATTTACATCAAATTTGCTGATCATGTTGTTGTGAAGAAGAGTTAAATACGCCA  
TGTTAGCTTTAACTGTATATGCCAGCAACATCTACCTTATTACACTACTGGTTCATACCTCTAGAGG  
GCAAGAAGGCCAGCAATGCCAGAACAATGGCAGAAGATGTACGGTAGATGCTCCGGGAATGAAGTCTAC



[View online »](#)

```

CACATTGTTTTGGAAGAAAGTACATTTTTTGTCTGAATATGAAGGAAAGAGTTTTACATATGCCTCTTTCC
ATGCACACAAAAAGTTTGGCGTCTGCTTGATTGGTGTAGGAGGGAGGATAATAAAAAACATTTTGTCTGAA
TCCAGGTCCTCGATACATTATGAATTCTACAGACATATGCTTTTATTAATATTACCAAAGAAGAGAAT
TCAGCATTTAAAAACCAAGACCAGCAGAGAAAAAGCAATGTGTCCAGGTCGTTTTATCATGGACCTTCCA
GATTACCTGTACATAGCATAATTGCCAGCATGGTACTGTGGCTATAGACTTGAAGATAACAAGCTGTAG
ATCAGCAAGTGGCCCTACCCTGTCTCTTCTACAGAGGGAAGCAAAGAAAATAAGAAGACCTAGCATTGCT
CCTGTTTTAGAGTTGCAGATACATCATCGATTCAAACATGTGATCTTCTAAGTGACCAATCAGAAGATG
AAACTACACCAGATGAAGAAATGTCTTCAAACCTTAGAGTATGCTAAAGGTTACCCACCTTATTCTCCATA
TATAGGAAGTTCACCCACTTTTTGTCATCTCCTTCATGAAAAAGTACCATTTTGTCTGCTTAAAGATTAGAC
AAGAGTTGCCAACATAACTACTATGAGGATGCAAAAGCCTATGGATTCAAAAATAAACTAATTATAGTTG
CAGCTGAAACAGCTGAAATGGATTATATAACTTTATTGTTCTCTCAGGGCATATTATAGACCAAAGAA
AGAACTTAATCCCATAGTACTGCTATTGGATAACCCGCCAGATATGCATTTTCTGGATGCAATCTGTTGG
TTTCCAATGGTTTACTACATGGTGGGCTCTATTGACAACCTAGATGACTTACTCAGGTGTGGAGTGACTT
TTGCTGCTAATATGGTGGTTGTGGATAAAGAGAGCACCATGAGTCCGAGGAAGACTACATGGCAGATGC
AAAACCATTGTGAACGTGCAGACTCTTCAGGTTGTTTTCCAGTCTCAGTATTATCACAGAGCTAACT
CACCCCGCAACATGAGATTATGCAATTCAGAGCCAAAGACTGTTACTCTCTTGTCTTTCAAAACTGG
AAAAGAAAGAACGGGAGAGAGGCTTAACCTGGCCTTTATGTTTTCGACTGCCTTTTGTCTGCTGGGAGGT
GTTTAGCATCAGTATGTTGGACTCTGCTGTATCAGTCATTTGTGAAGGATTATATGATTTCTATCACG
AGACTTCTGTTGGGACTGGACTACACCAGGATCTGGGTTTCTTTGTTCTATGAAAATCACTGCAGATG
ACTTATGGATCAGAACTTATGCCAGACTTATCAGAAGTTGTGTTCTTCTACTGGAGATGTTCCATTGG
AATCTACAGGACTGAGTCTCAGAACTTACTACATCTGAGTCTCAAATATCTATCAGTGTAGAAGAGTGG
GAAGACCAAAGACTCCAAAGAACAAGGGCACCACCGCAGCAACCACCGCAACTCAACATCCAGTGACC
AGTCGGACCATCCCTTGTGCGGAGAAAAGCATGCAGTGGGCCCGAAGACTGAGCAGAAAAGGCCAAA
ACACTCTGGTAAAACAGCTGAAAAAATAACCCAGCAGCGACTGAACCTCTACAGGAGGTCAGAAAAGACAA
GAGCTTGTGAACTTGTGAAAAATAGAATGAAACACTTGGGTCTTTCTACAGTGGGATATGATGAAATGA
ATGATCATCAAAGTACCCTCTCCTACATCCTGATTAACCCATCTCCAGATACCAGAATAGAGCTGAATGA
TGTTGTATACTTAATTCGACCAGATCCACTGGCCTACCTTCCAAACAGTGAAGCCAGTGAAGAAAACAGC
ATCTGCAATGTCACTGGTCAAGATTCTCGGGAGGAACTCAACT

```

ACGCGTACGCGGCCGCTCGAG - GFP Tag - GTTTAA

**Protein Sequence:**

>RG216225 representing NM\_198503  
 Red=Cloning site Green=Tags(s)

```

MVDLESEVPLPPRYRFRDLLLLGDQGWQNDQVQVEFYMNENTFKERLKLFFIKNQRSSLRIRLNFSLK
LLSCLLYIIRVLLNPSQGNESHIFWVNRSLPLWGLQVSVALISL FETILLGYLSYKGNIEQILRIPF
ILEIINAVPFIISIFWPSLRNLFVPVFLNCWLAKHALENMINDLHRAIQRTQSAMFNQVLI LITLCLLI
FTCICGIQHLEIRIGKKNLFDLSLYFCIVTFSTVGFQDVTPEWSSKLFVVAMICVALVVLPIQFEQLAYL
WMERQKSGGNYSRHAQTEKHVVL CVSSLKIDLLMDFLNEFYAHPRLQDYVVVILCPTMDVQVRRVLQI
PMWSQRVIYLGQSALKDQDLLRAKMDDAEACFILSSRCEVDRTSSDHQTLRAWAVKDFAPNCPLYVQIL
KPENKFHIFKADHVVCEEEFKYAMLALNCIPATSTLITLLVHTSRGQEQQSPEQWQKMYGRCSGNEVY
HIVLEESTFFAEYEGKSFTYASFHAKKFGVCLIGVRREDKNILLNPGPRYIMNSTDICYFINITKEEN
SAFKNQDQQRKSNVRSFYHGPSRLPVHSIIASMGTVADLQDTSRCSASGPTLSLPTGSKIEIRPSIA
PVLEVADTSSIIQCDLLSDQSEDETPDEEMSSNLEYAKGYPPSPYIGSSPTFCHLLHEKVPFCCRLRD
KSCQHNYVEDAKAYGFKNKLIIVAAETAGNLYNFIVPLRAYRPPKELNPIVLLLDNPPDMHFLDAICW
FPMVYYMVGSIDNLDLLRCGVTFANMVVVDKESTMSAEEDYMADAKTIVNVQTLFRLFSSLIIITELT
HPANMRFMQFRAKDCYSLALSKLEKKEREGSNLAFMFRLPFAAGRVFSISMLDITLLYQSFVKDYMSIT
RLLLGLDITTPGSGFLCSMKITADDLWIRTYARLYQKLCSSSTGDVPIGIYRTESQKLTTSSESQISISVEEW
EDTKDSKEQGHRSNHRNSTSSDQSDHPLLRRKSMQWARRLSRKGPKHSGKTAEKITQQLNLYRRSERQ
ELAELVKNRMKHLGLSTVGYDEMNDHQSTLSYILINSPDTRIELNDVVYLIRPDPLAYLPNSEPSRRNS
ICNVTGQDSREETQL

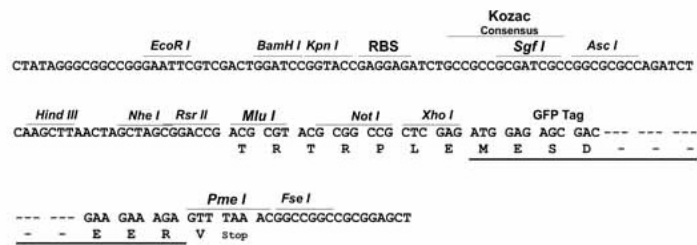
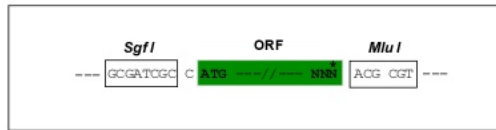
```

TRTRPLE - GFP Tag - V

Restriction Sites: SgfI-MluI

Cloning Scheme:

Cloning sites used for ORF Shuttling:

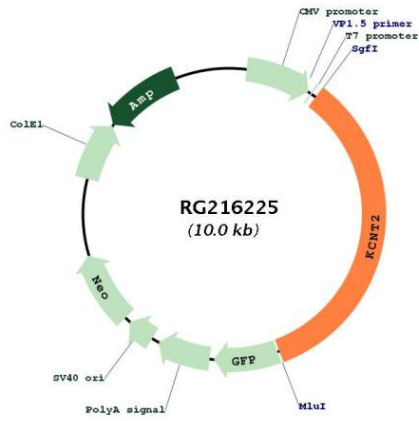


ACCN: NM\_198503

ORF Size: 3405 bp

<b>OTI Disclaimer:</b>	<p>Due to the inherent nature of this plasmid, standard methods to replicate additional amounts of DNA in E. coli are highly likely to result in mutations and/or rearrangements. Therefore, OriGene does not guarantee the capability to replicate this plasmid DNA. Additional amounts of DNA can be purchased from OriGene with batch-specific, full-sequence verification at a reduced cost. Please contact our customer care team at <a href="mailto:custsupport@origene.com">custsupport@origene.com</a> or by calling 301.340.3188 option 3 for pricing and delivery.</p> <p>The molecular sequence of this clone aligns with the gene accession number as a point of reference only. However, individual transcript sequences of the same gene can differ through naturally occurring variations (e.g. polymorphisms), each with its own valid existence. This clone is substantially in agreement with the reference, but a complete review of all prevailing variants is recommended prior to use. <a href="#">More info</a></p>
<b>OTI Annotation:</b>	This clone was engineered to express the complete ORF with an expression tag. Expression varies depending on the nature of the gene.
<b>Components:</b>	The ORF clone is ion-exchange column purified and shipped in a 2D barcoded Matrix tube containing 10ug of transfection-ready, dried plasmid DNA (reconstitute with 100 ul of water).
<b>Reconstitution Method:</b>	<ol style="list-style-type: none"> <li>1. Centrifuge at 5,000xg for 5min.</li> <li>2. Carefully open the tube and add 100ul of sterile water to dissolve the DNA.</li> <li>3. Close the tube and incubate for 10 minutes at room temperature.</li> <li>4. Briefly vortex the tube and then do a quick spin (less than 5000xg) to concentrate the liquid at the bottom.</li> <li>5. Store the suspended plasmid at -20°C. The DNA is stable for at least one year from date of shipping when stored at -20°C.</li> </ol>
<b>RefSeq:</b>	<a href="#">NM_198503.2</a> , <a href="#">NP_940905.2</a>
<b>RefSeq Size:</b>	5909 bp
<b>RefSeq ORF:</b>	3408 bp
<b>Locus ID:</b>	343450
<b>UniProt ID:</b>	<a href="#">Q6UVM3</a>
<b>Cytogenetics:</b>	1q31.3
<b>Protein Families:</b>	Druggable Genome, Ion Channels: Potassium, Transmembrane
<b>Gene Summary:</b>	<p>Outward rectifying potassium channel. Produces rapidly activating outward rectifier K(+) currents. Activated by high intracellular sodium and chloride levels (PubMed:14684870, PubMed:16687497, PubMed:29069600). Channel activity is inhibited by ATP and by inhalation anesthetics, such as isoflurane (PubMed:16687497) (By similarity). Inhibited upon stimulation of G-protein coupled receptors, such as CHRM1 and GRM1 (PubMed:16687497).</p> <p>[UniProtKB/Swiss-Prot Function]</p>

Product images:



Circular map for RG216225