

Product datasheet for **RG216220**

TRPM2 (NM_003307) Human Tagged ORF Clone

Product data:

Product Type:	Expression Plasmids
Product Name:	TRPM2 (NM_003307) Human Tagged ORF Clone
Tag:	TurboGFP
Symbol:	TRPM2
Synonyms:	ERE1; KNP3; LTrpC-2; LTRPC2; NUDT9H; NUDT9L1; TRPC7
Mammalian Cell Selection:	Neomycin
Vector:	pCMV6-AC-GFP (PS100010)
E. coli Selection:	Ampicillin (100 ug/mL)
ORF Nucleotide Sequence:	>RG216220 representing NM_003307 Red=Cloning site Blue=ORF Green=Tags(s)

TTTTGTAATACGACTCACTATAGGGCGGCCGGAATTCGTCGACTGGATCCGGTACCGAGGAGATCTGCC
GCC**CGATCGCC**

ATGGAGCCCTCAGCCCTGAGGAAAGCTGGCTCGGAGCAGGAGGAGGGCTTTGAGGGACTGCCAGAAGGG
TCACTGACCTGGGGATGGTCTCCAATCTCCGGCGCAGCAACAGCAGCCTCTTCAAGAGCTGGAGGCTACA
GTGCCCTTCGGCAACAATGACAAGCAAGAAAGCCTCAGTTCGTGGATTCTGAAAACATCAAGAAGAAA
GAATGCGTGTATTTGTGAAAGTTCAAACTGTCTGATGCTGGGAAGGTGGTGTGTGAGTGTGGCTACA
CGCATGAGCAGCACTTGGAGGAGGCTACCAAGCCACACCTTCCAGGGCACACAGTGGACCCAAAGAA
ACATGTCCAGGAGATGCCAACCGATGCCTTTGGCGACATCGTCTTCCAGGGCCTGAGCCAGAAGGTGAAA
AAGTACGTCCGAGTCTCCAGGACACGCCCTCCAGCGTATCTACCACCTCATGACCCAGCACTGGGGGC
TGGACGTCCCAATCTCTTGATCTCGGTGACCGGGGGGGCCAAGAACTTCAACATGAAGCCGCGGTGAA
GAGCATTTCCGAGAGGCTGGTCAAGGTGGCTCAGACCACAGGGGCTGGATCATCACAGGGGGTCC
CACACCGCGTCATGAAGCAGGTAGGCGAGGCGGTGCGGGACTTCAGCCTGAGCAGCAGTACAAGGAAG
GCGAGCTCATCACCATCGGAGTCGCCACCTGGGGCACTGTCCACCGCCGAGGGGCTGATCCATCCAC
GGCAGCTTCCCCGCGAGTACATACTGGATGAGGATGGCCAAGGAACTGACCTGCCTAGACAGCAAC
CACTCTCACTTCACTCTCGTGGACGAGCCACGGCCAGTACGGGGTGGAGATTCCTCTGAGGACCA
GGCTGGAGAAGTTCATATCGGAGCAGACCAAGGAAAGAGGAGGTGTGGCCATCAAGATCCCCATCGTGTG
CGTGGTGTGGAGGGCGGCCCGGCACGTTGTACACCATCGACAACGCCACCACCAACCGCACCCCTGT
GTGGTTGTGGAGGGCTCGGGCCGCGTGGCCGACGTCATTGCCAGGTGGCCAACCTGCCTGTCTCGGACA
TCACTATCTCCCTGATCCAGCAGAACTGAGCGTGTCTTCCAGGAGATGTTTGAGACCTTACGGAAAAG
CAGGATTGTGAGTGGACAAAAAGATCCAAGATATCGTCCGAGGCGGCAGCTGCTGACTGTCTCCGG
GAAGGCAAGGATGGTCAAGCAGGACGTGGATGTGGCCATCTTGAGGCCTTGTGAAAGCCTCACGGAGCC
AAGACCACTTTGGCCACGAGAACTGGGACCACAGCTGAAACTGGCAGTGGCATGGAATCGCGTGGACAT
TGCCCGCAGTGGATCTCATGGATGAGTGGCAGTGGAAAGCCTTCAGATCTGACCCACAGTACAGCT



[View online >](#)

GCACTCATCTCCAACAAGCCTGAGTTTGTGAAGCTCTTCTGGAGAACGGGGTGCAGCTGAAGGAGTTG
 TCACCTGGGACACCTTGCTCTACCTGTACGAGAACCTGGACCCCTCTGCCTGTTCCACAGCAAGCTGCA
 GAAGGTGCTGGTGGAGGATCCCAGCGCCCGGCTTGCAGCGCCCGGGCGCCCGCCTGCAGATGCACCAC
 GTGGCCAGGTGCTGCGGGAGCTGCTGGGGACTTACGCGAGCCGCTTTATCCCGGGCCCGGCACAACG
 ACCGGCTGCGGCTCCTGCTGCCGTTCCCACGTCAAGCTCAAGTGCAGGGAGTGAGCCTCCGGTCCCT
 CTACAAGCGTTCTCAGGCCATGTGACCTTACCATGGACCCCATCCGTGACCTTCTCATTGGGCCATT
 GTCCAGAACCCTCGGGAGCTGGCAGGAATCATCTGGGCTCAGAGCCAGGACTGCATCGCAGCGCCCTTGG
 CCTGCAGCAAGATCCTGAAGAACTGTCCAAGGAGGAGGACACGGACAGCTCGGAGGAGATGCTGGC
 GCTGGCGGAGGATATGAGCACAGAGCCATCGGGGCTTTCACCGAGTGTACCGGAAGGACGAAGAGAGA
 GCCCAGAACTGCTACCCCGTGTCCGAGGCCTGGGGGAAGACCACCTGCCTGCAGCTCGCCCTGGAGG
 CCAAGGACATGAAGTTTGTGTCTCACGGGGCATCCAGGCCTTCTGACCAAGGTGTGGTGGGGCCAGCT
 CTCCTGGACAATGGGCTGTGGCGTGTGACCCTGTGCATGCTGGCCTTCCCGTGTCTCACCAGCCCTC
 ATCTCTTCAGGGAGAAGAGGCTGCAGGATGTGGGCACCCCGCGGCCCGCCGCTTCTTACCAGG
 CACCCGTGGTGGTCTTCCACCTGAACATCTCTCTACTTCGCCCTTCTCTGCCTGTTCGCCTACGTGCT
 CATGGTGGACTTCCAGCCTGTGCCCTCCTGGTGGCAGTGTGCCATCTACCTCTGGCTTCTCTCTGGTG
 TGGAGGAGATGCGGCAGCTCTTCTATGACCCTGACGAGTGGGGCTGATGAAGAAGGCAGCCTTGTACT
 TCAGTGACTTCTGGAATAAGCTGGACGTGCGCGCAATCTTGTCTTCTGTGGCAGGGCTGACCTGCAGGCT
 CATCCCGGCGACGCTGTACCCCGGGCGGTCATCCTCTCTGGACTTACCTGTTCTGCCTCCGGCTC
 ATGCACATTTTTACCATCAGTAAGACGCTGGGGCCCAAGATCATCATTGTGAAGCGGATGATGAAGGACG
 TCTTCTTCTCTCTTCTGCTGGCTGTGTGGTGGTGTCTTCCGGGGTGGCCAAGCAGGCCATCCTCAT
 CCACAACGAGCGCCGGTGGACTGGCTGTTCCGAGGGCCGCTTACCCTCCTACCTCACCATCTTCGGG
 CAGATCCCAGGCTACATCGACGGTGTGAACCTCAACCCGAGCAGTGCAGCCCAATGGCACCAGCCCT
 ACAAGCCTAAGTCCCGGAGAGCGACGCGACGAGGAGGCGCCCTTCCCTGAGTGGCTGACGCTCCT
 CCTACTGCTCTACCTGCTCTTCAACACATCCTGCTGCTCAACCTCCTCATCGCCATGTTCAACTAC
 ACCTTCCAGCAGGTGCAGGAGCACAGGACCAGATTTGGAAGTCCAGCGCCATGACCTGATCGAGGAGT
 ACCACGGCCGCCCGCGCGCCGCCCTTCTCCTCCTCAGCCACCTGCAGCTTCTCATCAAGAGGGT
 GGTCTGAAGACTCCGGCCAAGAGGCACAAGCAGCTCAAGAACAAGCTGGAGAAGAACGAGGAGGCGGCC
 CTGCTATCCTGGGAGATCTACCTGAAGGAGAATACCTCCAGAACCAGGATCCAGCAAAAGCAGCGGC
 CCGAGCAGAAGATCGAGGACATCAGCAATAAGGTTGACGCCATGGTGGACCTGTGGACCTGGACCCACT
 GAAGAGGTGCGGCTCCATGGAGCAGAGGTTGCCCTCCCTGGAGGAGCAGGTGGCCAGACAGCCGAGCC
 CTGCACTGGATCGTGAGGACGCTGCGGGCCAGCGCTTACGCTCGGAGGCGGACGTCCCACTCTGGCT
 CCCAGAAGGCCCGGAGGAGCCGGATGCTGAGCCGGGAGGAGGAAGAAGACGGAGGAGCCGGGCGACAG
 CTACCACGTGAATGCCCGGCACCTCCTTACCCCAACTGCCCTGTACCGGCTTCCCGTGCCCAACGAG
 AAGGTGCCCTGGGAGACGGAGTTCTGATCTATGACCCACCTTTTACACGGCAGAGAGGAAGGACGCGG
 CCGCCATGGACCCATGGGAGACACCCTGGAGCCACTGTCCACGATCCAGTACAACGTGGTGGATGGCCT
 GAGGGACCGCGGAGCTTCCACGGGCGGTACACAGTGCAGGCGGGTGGCCCTGAACCCATGGGCCG
 ACAGGACTGCGTGGGCGCGGAGCCTCAGTGTCTCGGACCAACCACACGCTGTACCCATGGTACGCG
 GGTGGAGGCGGAACGAGGATGGAGCCATCTGCAGGAAGAGCATAAAGAAGATGCTGGAAGTGTGGTGGT
 GAAGCTCCCTCTCTCCGAGCACTGGGCCCTGCCCTGGGGGCTCCCGGAGCCAGGGGAGATGCTACCTCGG
 AAGCTGAAGCGGATCCTCCGGCAGGAGCACTGGCCGCTTTTTGAAAATTGCTGAAGTGGCGCATGGAGG
 TGTACAAAGGCTACATGGATGACCCGAGGAACACGGACAATGCCTGGATCGAGACGGTGGCCGTACGCT
 CCACTTCCAGGACCAGAATGACGTGGAGCTGAACAGGCTGAACCTAACCTGCACGCTGCGACTCGGGG
 GCCTCCATCCGATGGCAGGTGGTGGACAGGCGCATCCCACTCTATGCGAACCACAAGACCCTCCTCCAGA
 AGGCAGCCGCTGAGTTCGGGGCTACTAC

ACGCGTACGCGGCCGCTCGAG – GFP Tag – GTTTAA

Protein Sequence: >RG216220 representing NM_003307
 Red=Cloning site Green=Tags(s)

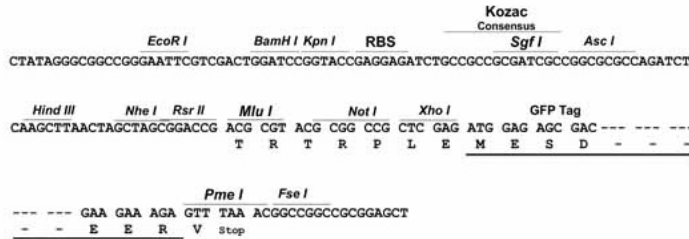
MEPSALRKAGSEQEEGFEGFLPRRVTDLGMVSNLRRSNSSLFKSWRLQCPFGNNDKQESLSSWIPENIKKK
 ECVYFVSSKLS DAGKVVQCQGYTHEQHL EEATKPHTFQGTQWDPKKHVQEMPTDAFGDI VFTGLS QKVK
 KYVRVSDTPSSVIYHLMTQHWGLDVPNLLISVTGGAKNFNMKPRLKSIFRRGLVKVAQTGAWIITGGS
 HTGVMKQVGEAVRDFSLSSSYKEGELITIGVATWGTVHRREGLIHPTGSFPAEYILDEDGQGNLTCLDSN
 HSHFILVDDGTHGQYGV EIPLRTRLEKFI SEQTKERGGVAIKIPIVVCVLEGGPGTLYTIDNATNGTPC
 VVVEGSGRVADVIAQVANLPVSDITISLIQQKLSVFFQEMFETFTESRIVEWTKKIQDIVRRRQLLTVFR
 EGKDGQQDQVDVAIQALLKASRSQDHFHGHENWDHQLKLAVAWNRVDIARSEIFMDEWQWQPSDLHPTMTA
 ALISNKPEFVKLFLENGVQLKEFVTWDTLLYL ENLDPSCLFHSKLQKVLVEDPERPACAPAAPRLQMHH
 VAQVRELLEGGDFTPLYRPRRHNDRLRLLLPVPHVKLVNQGVSRLSLYKRSSGHVFTTMDPIRDLI I WAI
 VQNRRELAGIIWAQSQDCIAAALACSKILKELSKEEEDTDSSEMLALAEYEYHRAIGVFTECYRKDEER
 AQKLLTRVSEAWGKTTCLQLALEAKDMKFVSHGGIQAF LTKVWWGQLSVDNGLWRVTL CMLAFPLLLTGL
 ISFREKRLQDVGTPAARARAFFTAPVVVFHLNLSYFAFLCLFAYVLMVDFQPVPSWCECAIYLWFLSLV
 CEEMRQLFYDPDECGLMKKAALYFSDFWNKLDVGAILLFVAGLT CRLIPATLYPGRVILSLDFILFCLRL
 MHIFTISKTLGPKIIIVKRMKDVFFFLFLLAVWVVSFGVAKQAILIHNERRVDWLF RGVAYHSYLTIFG
 QIPGYIDGVNFNPEHCSPNGTDPYKPKCPESDATQORPAFPEWLV LLLCLYLLFTNILLNLLIAMFNY
 TFQQVQEHTDQIWKVQRHDLIEEYHGRPAAPPPFILLSHLQLFIKRVVLKTPAKRHKQLKNKLEKNEEAA
 LLSWEIYLKENYLQNRQFQQQRPEQKIEDISNKVDAMVDLDDL DPLKRSGSMEQRLASLEEQVAQTARA
 LHWIVRTL RASGFSS EADVPTLASQKAAEEDAEPEGGRKTEEPGDSYHVNRHLLYPNCPVTRFPVNE
 KVPWETEFLIYDPPFYTAERKDAAMDPMGDTLEPLSTIQYNNVDGLRDRRSFHGPYTVQAGLPLNPMGR
 TGLRGRGSLSCFGPNHTLYPMVTRWRRNEDGAI CRKSIKKMLEVLVVKLPLSEHWALPGGSREPGEMLP
 RKLKRLRQEHWPSFENLLKCGMEVYKGYMDDPRNTDNAWIETVAVSVHFQDQNDVELNRLNSNLHACDSG
 ASIRWQVVD RRIPLYANHKTL LQKAAAEFGAHY

TRTRPLE - GFP Tag - V

Restriction Sites: SgfI-MluI

Cloning Scheme:

Cloning sites used for ORF Shutting:

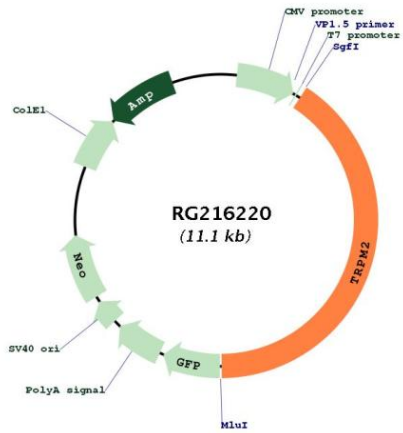


ACCN: NM_003307

ORF Size: 4509 bp

OTI Disclaimer:	The molecular sequence of this clone aligns with the gene accession number as a point of reference only. However, individual transcript sequences of the same gene can differ through naturally occurring variations (e.g. polymorphisms), each with its own valid existence. This clone is substantially in agreement with the reference, but a complete review of all prevailing variants is recommended prior to use. More info
OTI Annotation:	This clone was engineered to express the complete ORF with an expression tag. Expression varies depending on the nature of the gene.
Components:	The ORF clone is ion-exchange column purified and shipped in a 2D barcoded Matrix tube containing 10ug of transfection-ready, dried plasmid DNA (reconstitute with 100 ul of water).
Reconstitution Method:	<ol style="list-style-type: none"> 1. Centrifuge at 5,000xg for 5min. 2. Carefully open the tube and add 100ul of sterile water to dissolve the DNA. 3. Close the tube and incubate for 10 minutes at room temperature. 4. Briefly vortex the tube and then do a quick spin (less than 5000xg) to concentrate the liquid at the bottom. 5. Store the suspended plasmid at -20°C. The DNA is stable for at least one year from date of shipping when stored at -20°C.
RefSeq:	NM_003307.3 , NP_003298.1
RefSeq Size:	5876 bp
RefSeq ORF:	4512 bp
Locus ID:	7226
UniProt ID:	O94759
Cytogenetics:	21q22.3
Protein Families:	Druggable Genome, Ion Channels: Transient receptor potential, Transmembrane
Gene Summary:	The protein encoded by this gene forms a tetrameric cation channel that is permeable to calcium, sodium, and potassium and is regulated by free intracellular ADP-ribose. The encoded protein is activated by oxidative stress and confers susceptibility to cell death. Alternative splicing results in multiple transcript variants encoding distinct protein isoforms. Additional transcript variants of this gene have been described, but their full-length nature is not known. [provided by RefSeq, Feb 2016]

Product images:



Circular map for RG216220