

Product datasheet for **RG216202**

ZNF268 (NM_003415) Human Tagged ORF Clone

Product data:

Product Type:	Expression Plasmids
Product Name:	ZNF268 (NM_003415) Human Tagged ORF Clone
Tag:	TurboGFP
Symbol:	ZNF268
Synonyms:	HZF3
Mammalian Cell Selection:	Neomycin
Vector:	pCMV6-AC-GFP (PS100010)
E. coli Selection:	Ampicillin (100 ug/mL)



[View online »](#)

ORF Nucleotide
Sequence:

>RG216202 representing NM_003415
Red=Cloning site Blue=ORF Green=Tags(s)

TTTTGTAATACGACTCACTATAGGGCGGCCGGGAATTCGTCGACTGGATCCGGTACCGAGGAGATCTGCC
GCCGCGATCGCC

ATGGCCACCAGGGTCCGGACAGCTTCTATTTGGGTCCACCTCTCCAAGAACGAAACAGTTCATGGGATA
GGATCAGAAAGCTCCAAGGTGAGGAATCCATCTTGGGCCAAGGGACTCCTGGTCTGCAACCTCTCCCTGG
AACACCCAGGCAGAAGCAGAAGAGTCGAGAAATAGAGAAAAGTCCTAGAGTGGCTGTTTATTTCCCAAGAG
CAGCCAAAAATCACCAAGTCTGGGGACCTTTGTCATTGATGGATGTGTTTGGGATTTTACCTGGGAGG
AGTGGCAGCTGCTAGACCCAGCAGAGAAGTGCCTGTACAGGAGTGTGATGTTGGAGAACTATAGCAACCT
GGTGTCCCTAGGGTACCAACACACCAACCTGATATCATCTTCAAGTTGGAACAAGGAGAAGAGCTGTGT
ATGGTGCAGGCCAAGTCCAAATCAGACCTGTCCAAACACAGTCTGGAAAATTGATGATCTTATGGATT
GGCATCAGGAAAAAAGACAAGCTGGGAAGTACGGCAAAAAGCTTTGAATGCACTACATTTGGAAAACCT
ATGTCTTCTTAGTACAAAGTATCTTCAAGACAAAACCTCATAAATGTGGCAGCATGGAAAGAGTTTG
AAATATATAGATTTCACTAGTGATTATGCTAGAAAATAATCCTAATGGGTTTCAGGTACATGGAAAATCAT
TCTTCCATTCTAAACATGAGCAAACCTGTTATTGGAATAAAATACTGTGAAAGTATTGAATCTGAAAAAC
CGTCAATAAGAAATCGCAACTTATGTGCCAACAAATGTATATGGGCGAAAAACCTTTGGATGCAGCTGT
TGTGAGAAAGCCTTCAGCAGCAAGTACACCTTCTAGTGCATCAGCAAACCTATGCCGAAGAGAAACCTT
ATGTTTGAATGAATGTGGGAAAGACTTCAGTAGTAAATCATACCTCATTGTACATCAGAGAATTCATAC
AGGAGAGAAACTACATGAATGCAGTGAATGCAGGAAAACATTAGTTTCCATTACAGCTTGTATACAT
CAGAGAATTCACACAGGTGAGAATCCCTATGAGTGTGTAATGTGGGAAAGTCTTCAGTAGGAAAGACC
AGCTTGTGTTTACACCAGAAAACCTATTGAGGACAGAAAACCATATGTGTGAATGAATGTGGAAAGCTTT
TGGTTTTAAATCACAGCTCATTATACATGAAAGAATTCATACAGGAGAGAAAACCATATGAATGCAATGAA
TGTGAGAAAGCCTTTAATACAAAGTCAAACCTTATGGTACATCAGAGAACCCTATACAGGGGAGAAAACCTT
ATGTTTGTAGTGATTGTGAAAAAGCCTTTACATTCAGTACAGCTCATTGTACATCAGGGGATTACAC
AGGAGTAAAGCCCTATGGGTGATTTCAGTGTGGTAAAGGATTTCAGTTTGAATCACAGCTCATTGTACAT
CAGAGAAGTACACAGGAATGAAACCTTATGTATGCAATGAATGTGGCAAAGCCTTCAGGAGCAAGTCAT
ACCTTATTATACATACAAGGACTCATAACAGGAGAAAACTCCATGAATGCAACAATTGTGGGAAAGCCTT
CAGTTTTAAATCACAGCTCATTATACATCAGAGGATTACATACAGGAGAGAAACCCCTATGAATGCCATGAA
TGTGGGAAAGCCTTCAGTCGAAATACAGCTTATTTACACCAGAGAACTCATGCAGGAGAGAAAGCCTT
ATGAATGCACCGACTGTGAAAGCCTTTTGGTTTAAAGTACAGCTTATTATACACCAGAGAACTCATAAC
AGGGGAGAAACCTTTGAATGTAGTGAGTGTGAGAAAGCCTTTAATACAAAGTCAAACCTGATTGTACAT
CAGAGAACTCATAACAGGAGAGAAACCTATAGTTGTAATGAATGTGAAAAAGCCTTTACGTTCAAATCAC
AGCTCATTGTACATAAAGGAGTGCACACTGGAGTAAAACCTATGGATGCAGTCAATGTGCAAAAACCTT
TAGTTTGAAGTCCCAGCTCATTGTACATCAGAGAAGTACACAGGAGTAAAACCTATGGATGCAGTGAG
TGTGGGAAAGCCTTCAGGAGCAAGTACACCTTATTATACATATGAGAATCATAACAGGAGAGAAACCAT
ATGAGTGCAGGGAATGCGGGAAATCCTTTAGTTTCAATTCACAACCTCATTGTGCATCAGAGAATTCACAC
AGGAGAAAAATCCCTATGAATGCAGTGAATGTGGGAAAGCCTTTAATAGGAAAGACCAGCTCATTTCACAT
CAGCGAACTCATGCAGGGGAAAAGCCTTATGGGTGCAGTGAATGTGGGAAAGCTTTTAGCAGCAAGTCAT
ACCTAATTATACATGAGAATCATTACAGGTGAAAAACCATATGAATGAATGAATGTGGGAAAGCCTT
CATTGAAAACTACTACTCATTGTACATGAGCGAACTCATGCAGGGGTCAACCCTTATAAATGCAGTCAA
TGTGAGAAATCCTTCAGTGGGAAATTACGCCTTCTGTACACCAGAGAATGCACACAAGAGAGAAACCAT
ATGAATGCAGTGAGTGTGAAAAAGCCTTCATTAGGAATTCTCAACTCATTGTACATCAAAGAATCATTTC
AGGAGAGAAACCCCTATGGGTGCAATGAATGTGGGAAAACCTTCTCTCAAAAATCAATTCTCAGTGCACAT
CAGAGAACACATACAGGAGAGAAAGCCTTGAAGTGCAGTGAATGTGGGAAAGCCTTTTGTGGAAGTCAC
AGCTCATTATGCATCAGAGAATCATGTAGATGACAAACAT

ACGCGTACGCGGCCGCTCGAG - GFP Tag - GTTTAA

Protein Sequence: >RG216202 representing NM_003415
 Red=Cloning site Green=Tags(s)

MATRVRTASIWVPLQERNSSWDRIRKLQGQESILGQGTPLQLPGTPRQKQKSRRIEKVLEWLFISQE
 QPKITKSWGPLSFMDVFDFTWEEWQLLDPAQKCLYRSVMLNYSNLVSLGYQHTKPDIIIFKLEQGEELC
 MVQAQVNPQTCPNTVWKIDDLMDWHQENKDKLGSTAKSFECTTFGKLCLLSTKYL SRQKPHKCGTHGKSL
 KYIDFTSDYARNPNPQGFQVHGKSFHSHKEQTVIGIKYCESIESGKTVNKKSQLMCQQMYMGEKPFGCSC
 CEKAFSSKSYLLVHQQTHAEKPYGCNECGKDFSSKSYLIVHQRIHTGEKLEHCSECRKTF SFHSQLVIIH
 QRHTGENPYECCECGKVF SRKDQLVSHQKTHSGQKPYVCNECGKAFGLKSQLIHERIHTGEKPYECNE
 CQKAFNTKSNLMVHQRTHTGEKPYVCSDCGKAFTFKSQLIVHQGIHTGVKPYGCIQCCKGKSLKSQLIVH
 QRSHTGMKPYVCNECGKAFRSKSYLIIHTRTHTGEKLEHCNCGKAFSFKSQLIIHQRIHTGENPYECHE
 CGKAFSRKYQLISHQRTHAGEKPYECTDCGKAFGLKSQLI IHQRTHHTGEKPFECSECQKAFNTKSNLIVH
 QRTHHTGEKPYSCNECGKAFTFKSQLIVHKGVHTGVKPYGCSQCAKTF SLKSQLIVHQRSHTGVKPYGCSE
 CGKAFRSKSYLIIHMRTHHTGEKPHCRECGKSF SFNSQLIVHQRIHTGENPYECSECGKAFNRKDQLISH
 QRTHAGEKPYGCSECGKAFSSKSYLIIHMRTHSGEKPYECNECGKAF IWKSLLI VHERTHAGVNPYKCSQ
 CEKSFSGKLRLLVHQRMHTREKPYECSECGKAFIRNSQLIVHQRTHTSGEKPYGCNECGKTF SQKSILSAH
 QRTHHTGEKPKCTECGKAF CWKSQLIMHQRTHTVDDKH

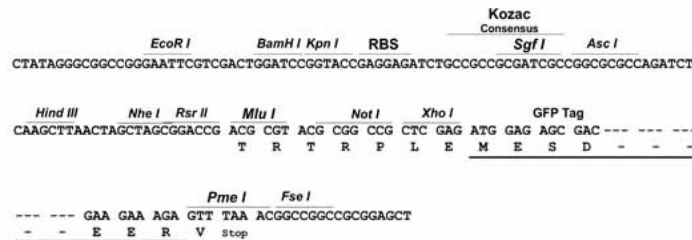
TRTRPLE - GFP Tag - V

Restriction Sites:

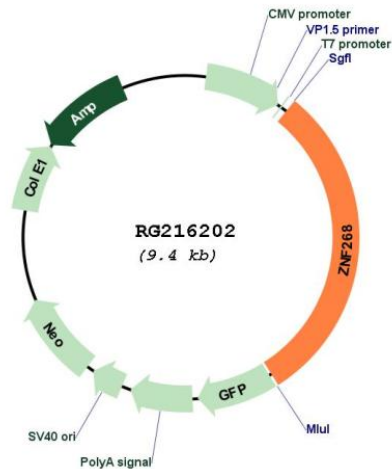
SgfI-MluI

Cloning Scheme:

Cloning sites used for ORF Shuttling:



Plasmid Map:



ACCN: NM_003415

ORF Size: 2841 bp

OTI Disclaimer: The molecular sequence of this clone aligns with the gene accession number as a point of reference only. However, individual transcript sequences of the same gene can differ through naturally occurring variations (e.g. polymorphisms), each with its own valid existence. This clone is substantially in agreement with the reference, but a complete review of all prevailing variants is recommended prior to use. [More info](#)

OTI Annotation: This clone was engineered to express the complete ORF with an expression tag. Expression varies depending on the nature of the gene.

Components: The ORF clone is ion-exchange column purified and shipped in a 2D barcoded Matrix tube containing 10ug of transfection-ready, dried plasmid DNA (reconstitute with 100 ul of water).

Reconstitution Method:

1. Centrifuge at 5,000xg for 5min.
2. Carefully open the tube and add 100ul of sterile water to dissolve the DNA.
3. Close the tube and incubate for 10 minutes at room temperature.
4. Briefly vortex the tube and then do a quick spin (less than 5000xg) to concentrate the liquid at the bottom.
5. Store the suspended plasmid at -20°C. The DNA is stable for at least one year from date of shipping when stored at -20°C.

RefSeq: [NM_003415.3](#)

RefSeq Size: 5756 bp

RefSeq ORF: 2844 bp

Locus ID: 10795

UniProt ID: [Q14587](#)

Cytogenetics: 12q24.33

Domains:	KRAB, zf-C2H2
Protein Families:	Transcription Factors
Gene Summary:	Isoform 1: Acts as a transcriptional repressor. Inhibits erythroid differentiation and tumor cell proliferation. Plays a role during ovarian cancer development and progression. [UniProtKB/Swiss-Prot Function]