

## Product datasheet for **RG216185**

### KIAA1210 (NM\_020721) Human Tagged ORF Clone

#### Product data:

Product Type:	Expression Plasmids
Product Name:	KIAA1210 (NM_020721) Human Tagged ORF Clone
Tag:	TurboGFP
Symbol:	KIAA1210
Mammalian Cell Selection:	Neomycin
Vector:	pCMV6-AC-GFP (PS100010)
E. coli Selection:	Ampicillin (100 ug/mL)
ORF Nucleotide Sequence:	>RG216185 representing NM_020721 Red=Cloning site Blue=ORF Green=Tags(s)

TTTTGTAATACGACTCACTATAGGGCGGCCGGAATTCGTCGACTGGATCCGGTACCGAGGAGATCTGCC  
GCC**CGATCGCC**

ATGAGGGCCGGCTGGACGCCTCGAGGCTTCTCTGCCTTTCACGCTTCTCTCCTTCTGGCCGGCACCCCT  
ACCTGGCTCACCTGGGCCCCAGGGACCGAGGGGCCAGGATTGGAAGTCGAGCGTATCCCAAGGCTGTTG  
CAGTTGTCTTTGGTTGACTTACAAAGGCAAGAAGGAGGGAAGCACCAAGGGGAGCTTGGCCAGCTGCA  
GTGACTGACCTGGAAATACCTAGTTATCCCGGGCTTCTGCTGCACACCCGGATCCCTACCACTT  
GGTGCAGGGGACCTGGATGCTTTTGTGGCACTGCAGTGATTGCTGGTAATCTTGGGGATCTGCCAGGAT  
AGTGGGCCCTCACATCATGCTAGTCAGCTTCTCTACTCCAAGAACAGGATTTCAGGAAATCATCTTACA  
ATGGCTGAATCACTAAGTAAATTTCTGACAGTCTGGATGTTCTGGAGGCCGGTATGAGGGAAAGAAGA  
AATGCAAATTTAAAGCCCTTAAGAGCTTTTTTGTAAAGAAGGAAAAAGAAGCCGAAGATACCCAGGA  
AGAAGAAATGCTAGAAGTGAAGTGTCCAGCAGCAACATTAACATCTTCTCTGAGCCGTTCCGGAA  
AATCAACCAACTAAGGCCAGGGCAAGAGCAGCATGGGGAGCAAAGCCCTATCCCATGATAGCATTTCA  
TGTTGGTCTGAGCCTGAAAGATCAGCAAGTAAATGTTTCTTCTATGGATCCCAGAGAGGCAGACC  
TCAGCAGAGATCCCATATTTCCAGAACTCTGCCTAAACCTAGGAGTAAGGTTCTGGAGTTGTGTCTGGA  
GCCATGTCAGGAGCTGTGCTTCAAATGTGCCTACAAGTGCAGTCTGGGTTGCTGGCCCCAAGATCACTG  
AGAACCCACCATCGCGCCGACGCCGACTCAGCATCATCCACCTGTTATCCAACCTGAAATAATTTCTAA  
GAACTTGGTAGAAATCTCTCTCGATGATGAGTCACCTAAGAATCCACAAAAGAAGGCTTTACCACATAAG  
AGTTTGACAGCGACTCAGAGCTTCTCTGAGTTATCATCTGGACCTGATTGCTCACAGTCCTTGAAGTGCAT  
TTGCCACACTTGCCCTTACCAGTAGCACCAGCTGCCATTGGTTTCAGCACCCAGCCACCACCAGGG  
CTGTTTGGATTCTTCAAGTGTCTCGCCACAAAATGACTTTAAATCCCGCAAACAAAAGAAGAACCTTCAA  
GTGATTATTCGTGGCCTTCCAGTGTGGTTCAAGTCAATTCAGGGTATTTTAGAGGGATCCCTGCAGTGTG  
TCACTCAGACATTAGAACTCCAAACCTGGATGAACCACTTCCAGTGAACCAAAAGGAGGAGGCCAAA  
CCTTCCATTGGTTTCTGAAGAAGAAAAGCATAACCAAAACAAAAGAAATCAACGAAAAGAGCTGGGA  
ATGGCAGTGCAGATTCCTCAAGCCAGAAACAGAACAAACAAACTGAGATGTATGATAAGAAGACACAG  
ACCAGGCTCCAAACACTGATGCTTCTCGGAGTCAGGGCTATCCAATGTCAGCAGCATATGGAAGAAGATG



[View online >](#)

GAGAAGAAAAGGAGCAAGTGTTCAGGATTGAGTGGGTGTGAATTCAAAGGAAGAAGCCTTAAACAATCC  
 AGTGAAGGGTATGGCCTGGGCGATAGAGCTGGGTCTTACCTACCAATAAGACTGCCAGGAATGTCCCTT  
 TCTCGCACTTGTCTTAGAGAAGGACAACATGGAGCAGCCTACAACCTTCAACCAGAAACCACTACCCC  
 TCAGGGGTTGCTTTCAGATAAAGATGACATGGGAAGGAGAAAATGCTGGCATAGATTTTCGGATCCAGAAAA  
 GCATCAGCAGCACAGCCCATACCTGAAAACATGGACAATCCATGGTTAGTGATCCACAACCATACCATG  
 AAGATGCAGCTTCTGGAGCTGAGAAGACAGAAGCCAGAGCTTCTCTCACTGATGGTGGAAAGCCTTTTC  
 TACAACCCAAAGAGGAGGCCATTTCTCAGTAGCAGCAGAGGCTCAGGTGTTTATGAATCCTTCTCATATC  
 CAGTTAGAAGATCAAGAAGCTTTTCAGCTTTGATTTACAAAAGGCCAATCCAAAATGGAGTCAGCCAGG  
 ATGTTCAAATCTGCAAGAAAAGCCTTCTGGAAATGTTACCCAGACCTTTACAGCAAGTGTGTTGGG  
 TATGACAAGTACTACAGCCAAAGGAGATGTTTATGCCAAGACTCTGCCTCCCAGAAGCCTTTTTCAGTCC  
 TCAAGGAAGCCTGATGCTGAAGAAGTCTCCTCAGATTCAGAGAATATTCTGAGGAGGGGGATGTTCTG  
 AAGAACTGGCTCATGGTCACTCTCCAGTCTTGGGGAAGTTTGAAGATGAACAAGAAGTCTTCTCAGA  
 ATCAAAAAGTTTTGTTGAGGACTTGAGCAGCTCTGAGGAGGAGCTGGACCTCAGATGCCTCTCCAGGCT  
 TTAGAGGAGCCTGAAGATGCAGAAGTCTCACAGAATCAAGCAGTTATGTTGAAAAGTACAACACTTCTG  
 ATGATTGCAGCAGCTCAGAGGAAGACCTGCCTCTCAGACACCCTGCTCAGGCCTTGGGAAAGCCAAAAA  
 CCAACAAGAAGTCTCCTCTGCTTCAAATAATACTCCTGAAGAGCAGAATGATTTTATGCAGCAGCTGCCT  
 TCAGATGCCCTTCTCAGCCATTATGAATCCTACTGTTAGCAACAAGTCCCCACCAGTTCAGTGGGCA  
 CTTCTATAAAAACAGAGCGATTCCGTGGAGCCAATCCCTCCAAGACACCCTTTCCAGCCATGGGTGAACCC  
 TAAAGTGGAGCAAGAAGTTTCTCATCTCAAAGAGCATGGCTGTTGAAGAGAGCATTCTATGAAGCCT  
 CTGCCTCCTAACTTCTTTGCCAGCCCTTGATGAATCCTAAAGTCAACAAAACATGTTCTCAGGTTTCAG  
 AGGACATTGCTGTTGAGAGAGTCATTTCTGTGGAGCCACTACTCCCAGATATTCTCCTCAGTCTTGAC  
 AGATCCTCAAATCCGGCAAATCTCAGAAAGCACAGCTGTTGAGGAAGGCCTTATGTGGAACCGCTGCCT  
 CCCAGATGCCTTTCCAGCCCTCGGAGAGGCCTAAGTTCTGGACTCAATGAGTACTTCTGCAGAATGGA  
 GCAGTCTGTGGACCAACACCTTCAAATAACTTCCCGCCATGGGTGACCCCTAAAATTTGAGGAACT  
 GTATCAACTCTCTGCACATCCAGAAAGCACTACTGTTGAAGAGGACATTTCTAAGGAGCAGCTGCTCCC  
 AGACATCTTTCCAGTTGACTGTGGGAAAATAAGTCCAGCAACTGTCTCAAATTTCCAGCGGGCTGCTA  
 TTGAGGCAGACATTTCTGGGAGTCCATTGCCTCCCAATATGCTACCCAGTTCTTAAAGAGGTCTAAAGT  
 TCAGGAAATGACCTCACGACTAGAGAAAATGGCTGTTGAAGGCATTTCTAACAAATCACCGATTCCAGG  
 CGTCCGACCCAGTCATTCGTGAAATTTATGGCACAGCAAATCTTTTCAGAGAGCTCTGCTCTTAAGAGGG  
 GCAGTGATGTGGACCTCTGCCTCCCAATCTTCTTCAAATCTTATCAAAGCCTGAAGTCAAGCACCA  
 AGTTTTCTCAGATTCAGGGAGTGCTAATCCTAAGGGAGGCATTTCTTCAAAGATGCTACCTATGAAGCAC  
 CCTTTACAGTCTTGGGAGGCCTGAAGACCCACAGAAAGTTTTCTTATTTCAGAGAGAGCTCCTGGGA  
 AGTGCAGCAGTTTTAAAGAGCAGCTGTCTCCAGGCAGCTTTCCAGGCCTTGGAGAAACCTGAGTATGA  
 GCAAAAAGTCTCCCTGTTTCTGCCAGTTCTCCTAAAGAGTGGAGGAATTCTAAAAGCAGCTGCCTCCC  
 AAACATTTCTCCAAGCCTCAGATAGGTCTAAATTCAGCCACAGATGTCATCAAAGGGCCAGTGAATG  
 TACCTGTAAAGCAGAGCAGCGGTGAGAAGCACCTGCCTCAAGTAGTCTTTCCAGCAACAGGTTTCATTC  
 AAGTTCGTGAATGCTGCTGCTAGGCGATCTGTTTTGAGAGCAATTCGACAATGGTTCTTAGGAAGA  
 GATGAAGCTTTTGAATCAAACCAAGAAATTCAGCCAAGGTTCCAAAACCCCAATAAAGAGCATTCCAG  
 CCCCTGCTACCAAACCTGGGAAGTTCACCATTGCTCCTGTCAGGCAAAACATCCACTTCTGGGGGCATTTA  
 CTCTAAGAAAGAAGATCTTGAGAGTGGTATGGTAATAATAACCAGCATGCAAACCTATCCAATCAGGAT  
 GATGTTGAAAAGCTTTTTGGAGTTCAGACTGAAAAGAGCCCTCCCTCGCAGAAAGTATAAGAGTGAGAAAC  
 AAGATAACTTCACCCAGCTTGCTTCAGTGCCCTCGGGCCCAATTTTCATCCTCTGTAGGCAGGGGACATAA  
 AATCAGAAGCACTTCCAGGGGCTCCTGGATGCTGCAGGGAACCTCACCAAAAATATCTTACGTTGCAGAT  
 AAGCAACAGAGCAGGCCCAAATCTGAAAGCATGGCCAAGAAGCAACCTGCTTGAAGACCCAGGAAAGC  
 CTGCTGGTCAACAGTCAGATTATGCTGTCTCAGAGCCGGTTTGGATAACTATGGCAAAGCAGAAGCAGAA  
 GAGTTTCAAGGCCACATTTCTGTGAAAGAGCTGAAAACCTAAGAGCAATGCTGGAGCCGATGCTGAGACT  
 AAGGAGCCTAAAATAGAGGGAGCTGGCTCTGCAAATGAAAACCAACCTAAAAGATGTTCACTTCCAGTG  
 TCCATAAACAGGAGAAGACAGCACAGATGAAGCCACCTAAGCCTACAAAATCAGTTGGATTTGAAGCTCA  
 GAAGATACTGCAAGTTCCTGCCATGAAAAAGAAACCAACGATCTTCAACTCTCCAGCCAAGTCCAG  
 AACCCAGTTGAGCCAATTGAGCCTGTCTGGTTCTCACTGGCCAGGAAGAAAGCCAAGCATGGAGCCACA  
 TGGCAGAAATCACGCAA

ACGCGTACGCGGCCGCTCGAG – GFP Tag – GTTTAA

**Protein Sequence:**

>RG216185 representing NM\_020721  
 Red=Cloning site Green=Tags(s)

```

MRAGWTPRGRSAFHASLLPGRHPYLAHLGPRDRGARIGSRAYSQGCCSCLWLTYKGGKKEGSTKGELGPAA
VTDLEIPSYSRGFLPCTPRFPTTWCRGPGCF CGTAVIAGNLGDLARIVGPPSHASQLLLLQEQDSGNHPT
MAESLSEISDSL DVLEAGDEGKCKKFKALKSFFVKKKEKEAEDTQEEEMLEL SLSNNINISLQPVRE
NQPTKARAKSSMGSKALSHDSIFMLGPEPERSASKMFPMDPQRGRPQQRSHISRTPKPRSKVPGVVS
AMSGAVLQNVPTS AVVWVAGPKITENPPSRRRRLSIIPPVIQPEIISKNLVEISL DDESPKNPQKALPHK
SLTATQSFSELSGPDSCQSLTAFATLASTSSTQLPIGFSTPATTQGC L DSSAARHKMTLNPRKQKKNLQ
VIIRGLPVWFSHFQGLEGLQCVTQTLETPLNDEPLVPEK EEPNLPVSEEEKSITKPEINEK KLG
MDSADSSSQKQNNKTEMYDKKTTDQAPNTDASRSQGYPM SAAAYGRRWRRKGASV SGLSGCEFKGRSLKQS
SEGYGLGDRAGSSPTNK TARNVPF SHLSLEKDNMEQPTTSQPETTTPQGLLSDKDDMGRRNAGIDFGSRK
ASAAQPIPENMDNSMVSDPQPYHEDAASGAEKTEARASLSLMVESLSTTQEEAILSVAAEAQVFMNPSHI
QLEDQEAFFDLQKAQSKMESAQDVQTIKKEKPSGNVHQTTASVLGMTSTTAKGDVYAKTLPPRSLFQS
SRKPDAAEVSSDSENIPEEGDGSEELAHGHSSQSLGKFEDEQEVFSEKSFVEDLSSSEEELDLRCL SQA
LEEPEDA EVFTESSSYVEKYNTSDDCSSSEEDLPLRHPAALGKPKNQEVSSASNNTP EEQNDFMQQLP
SRCPSQPI MNPTVQQVPTSSVGT SIKQSDSVEPIPPRHPFPWVNPKEVEVSSSPK SMAVEESISMKP
LPPKLLCQPLMNPKVQNMFGS E DIAVERVISVEPLLPRYSPQSLTDPQIRQISESTAVEEGTYVEPLP
PRCLS QP SERPKFLDSMSTSAEWS SPVAPTPSKYTSPPWVTPKFEELYQLSAHP ESTTVEEDISKEQLLP
RHLSQLTVGNKVQQLSSNF ERAAIEADISGSPLPPQYATQFLKRSKVQEMTSRLEKMAVEGTSNKSPIPR
RPTQSFVKFMAQQIFSESSALKRGSDVAPLPPNLP SKSLSKPEVKHQVFS DSGSANPKGGISSKMLPMKH
PLQSLGRPEDPQKVFYSERAPGKCSSFKEQLSPRQLS QALRKPEYEQKVSPVSASSPK EWRNSKKQLPP
KHSSQASDRSKFPQMSSKGPVNVVVKQSSGEKHL PSSSPFQQQVHSSSVNAAARRSVFESNSDNWFLGR
DEAFAIKTKKFSQGSKNPIKSIPAPATKPGKFTIAPVRQTSTSGGIYSKKEDLES GDGNNNQHANLSNQD
DVEKLFVRLKRAPPSQK YKSEKQDNFTQLASVSPGPISSSVGRGHKIRSTSQGLLDAAGNLTKISYVAD
KQSRPKSEMAKKQPACKTPGKPAGQQSDYAVSEPVWITMAKQKQKSFKAHISVKELKTKSNAGADAET
KEPKYEGAGSANENQPKMFTSSVHKQEKTAQMKPPKPTK SVGF EAQKILQVPAMEKETKRSSTLPAKFQ
NPVEPIEPVWFSLARKKAKAWSHMAEITQ
    
```

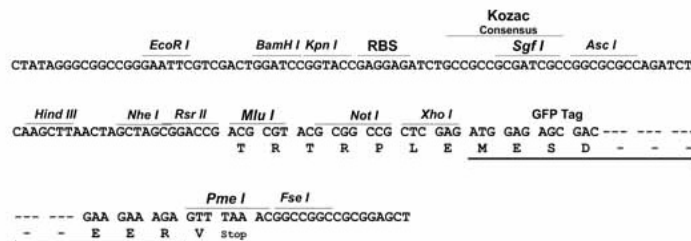
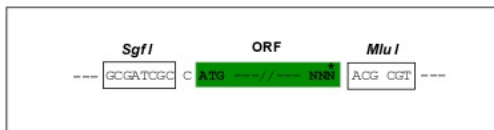
TRTRPLE – GFP Tag – V

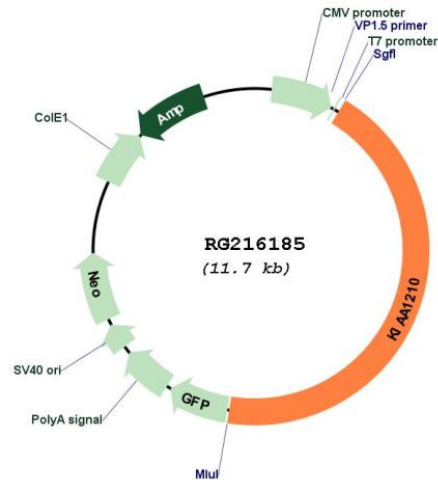
**Restriction Sites:**

Sgfl-MluI

**Cloning Scheme:**

Cloning sites used for ORF Shutting:



**Plasmid Map:**


**ACCN:** NM\_020721

**ORF Size:** 5127 bp

**OTI Disclaimer:** The molecular sequence of this clone aligns with the gene accession number as a point of reference only. However, individual transcript sequences of the same gene can differ through naturally occurring variations (e.g. polymorphisms), each with its own valid existence. This clone is substantially in agreement with the reference, but a complete review of all prevailing variants is recommended prior to use. [More info](#)

**OTI Annotation:** This clone was engineered to express the complete ORF with an expression tag. Expression varies depending on the nature of the gene.

**Components:** The ORF clone is ion-exchange column purified and shipped in a 2D barcoded Matrix tube containing 10ug of transfection-ready, dried plasmid DNA (reconstitute with 100 ul of water).

**Reconstitution Method:**

1. Centrifuge at 5,000xg for 5min.
2. Carefully open the tube and add 100ul of sterile water to dissolve the DNA.
3. Close the tube and incubate for 10 minutes at room temperature.
4. Briefly vortex the tube and then do a quick spin (less than 5000xg) to concentrate the liquid at the bottom.
5. Store the suspended plasmid at -20°C. The DNA is stable for at least one year from date of shipping when stored at -20°C.

**RefSeq:** [NM\\_020721.1](#), [NP\\_065772.1](#)

**RefSeq Size:** 7838 bp

**RefSeq ORF:** 5130 bp

**Locus ID:** 57481

**UniProt ID:** [Q9ULL0](#)

Cytogenetics: Xq24