

Product datasheet for **RG216142**

NFAT5 (NM_006599) Human Tagged ORF Clone

Product data:

Product Type:	Expression Plasmids
Product Name:	NFAT5 (NM_006599) Human Tagged ORF Clone
Tag:	TurboGFP
Symbol:	NFAT5
Synonyms:	NF-AT5; NFATL1; NFATZ; OREBP; TONEBP
Mammalian Cell Selection:	Neomycin
Vector:	pCMV6-AC-GFP (PS100010)
E. coli Selection:	Ampicillin (100 ug/mL)
ORF Nucleotide Sequence:	>RG216142 representing NM_006599 Red=Cloning site Blue=ORF Green=Tags(s)

TTTTGTAATACGACTCACTATAGGGCGGCCGGAATTCGTCGACTGGATCCGGTACCGAGGAGATCTGCC
GCC**CGATCGCC**

ATGCCCTCGGACTTCATCTCATTGCTCAGCGGGACCTAGACCTGGAATCGCCCAAGTCCCTCTACTCGC
GAGAATCTGTCTATGATCTTCTCCCAAAGGAGTTACAGTTACCTCCATCTAGAGAAACATCTGTAGCATC
AATGAGTCAGACAAGCGGTGGTGGCAGGCTCGCTCCTCCAGCTGTTGTTGCTGCTGATGCTTCTTCA
GCTCCCTCCTTCTCCATGGGCGGTGCTTGCAGCTCCTTACCACCTTCCAGCCCTACCATTTATT
CTACCTCAGTCACCGACAGCAAGGCTATGCAAGTGAGAGCTGCTCCTCAGCCGTGGGGTAAGTAAACAG
AGGGGTAAAGTAAAAGCAGTTAACACAGTAAACACAGTTCAGCAGCATCCATCAACACCGAAGAGGCACACA
GTCTTGTACATCTCACCACCCTGAGGACTTGCTGGATAACAGTCGGATGTCCTGCCAGGATGAGGGGT
GTGGATTGGAATCTGAGCAGAGCTGCAGTATGTGGATGGAGGATCCCCCTCAAACCTCAGTAAACATGAG
CACCAGTTCCTACAATGATAACACTGAGGTACCTCGTAAATCACGAAAACGAAATCCAAAGCAGAGGCCG
GGGGTCAAACGACGAGATTGTGAAGAATCTAATATGGATATATTTGATGCCGACAGTGCCAAAGCACCTC
ACTATGTCTTTCTCAGTTACCACGGACAACAAAGGCAACTCAAAGCGGGAAATGGAACATTGGAAAA
CCAAAAAGGAAGTGGAGTAAAGAAGAGCCCTATGTTGTGTGGACAATATCCTGTTAAAAGTGAGGGAAAG
GAGCTGAAGATAGTTGTACAACCTGAGACACAGCACCGAGCTCGTACCTGACTGAGGGCAGCCGTGGCT
CAGTGAAAGATAGAACACAGCAAGGCTTTCCTACAGTAAAGCTGGAAGGCCATAATGAACCTGTAGTGTT
GCAAGTGTGTTGGGCAACGACTCTGGACGAGTAAACCACATGGATTTTATCAGGCCTGCAGGTAACCT
GGACGAAATACAACCTCCTTGCAAAGAAGTGACATTGAAGGCACTACTGTTATAGAAGTCGGCCTTGATC
CTAGCAACAACATGACACTGGCGGTGGACTGCGTAGGGATATTGAAATTGAGGAATGCTGATGTCGAAGC
CAGAATAGGAATTGCTGGTTCCAAGAAGAAAAGCACTCGTGCCAGATTGGTTTTTCGAGTTAATATCATG
AGGAAAGATGGCTCCACTTTGACACTGCAACACCCTTCTCCTCAATTTTGTGTAAGTACTCAGCCAGCAGGAG
TGCCAGAAATCTAAAGAAAAGCTTGATAGCTGTTGAGTAAAGGAGAAGAAGAAGTGTTTTTAATCGG
CAAGAATTTCTGAAAGGAACTAAAGTTATTTTCAAGAAAATGTTTCTGATGAAAACCTTGTGAAGTCA



[View online >](#)

GAAGCTGAAATTGATATGGAACATTTTCATCAGAATCATCTTATTGTGAAGGTTCTCCCTATCATGACC
AACATATAAATTTGCCTGTGTCAGTGGGAATATATGTAGTGACAAATGCTGGAAGATCTCATGATGTTCA
ACCATTCACTTACACTCCAGACCCAGCAGCAGCTGGTGCCTTTGAATGTAATGTGAAGAAGGAAATATCT
AGTCCAGCAAGACCTTGCCTCTTTTGAAGAGGCCATGAAAGCAATGAAAACACTGGATGTAATTTAGATA
AGGTAATATTATCCCTAATGCCTGATGACTCCACTCATACCAAGCAGTATGATTAAGAGTGAAGATGT
TACTCCAATGGAAGTAACAGCAGAAAAAAGATCTTCCACTATTTTTAAGACTACAAAGTCTGTTGGATCA
ACTCAGCAAACATTAGAAAACTCTCAAACATAGCAGGAAATGGCTCTTTTTTCATCACCATCATCTTCCC
ACCTACCTTCTGAAAATGAAAAACAGCAGCAGATTTCAGCCCAAGGCATACAACCCAGAGACCCCTGACAAC
TATTCAAAACCCAGGACATCTCACAGCCTGGTACTTTTTCCAGCAGTTTCTGCTTCTAGTCAGCTGCCAAC
AGCGATGCACTATTGCAGCAGGCTACACAGTTTCAGACAAGAGAACTCAGTCTAGAGAGATATTACAGT
CAGATGGTACAGTGGTTAATTTGTCAACTGACTGAGGCATCACAACAACAGCAGCAGTACCCTACA
AGAACAAGCACAGACTTTACAGCAGCAGATTTTCATCAAAATTTTTTCATCACCAAATAGTGTGAGTCAG
CTTCAGAATACTATTGAGCAGCTGCAAGCAGGGAGTTTCAGGGCAGTACTGCTAGTGGCAGCAGTGGAA
GTGTTGACTTGGTCCAACAAGTTTTAGAGGCACAGCAGCAGTTATCTTCAGTTTTATTTCTGCTCCAGA
TGTAATGAGAATGTTCAAGAGCAGCTTAGTGCAGATATTTTTCAACAAGTCAGTCAAATTCAGAGTGGT
GTAAGCCCTGGAATGTTTTCTCAACAGAGCCAACAGTCCATACCAGACCAGATAATTTATTACCTGGAA
GAGCTGAAAGTGTTTCATCCACAGTCTGAAAACAGTTATCTAATCAACAGCAGCAGCAGCAGCAGCAACA
GCAAGTGTGGAATCTTCAGCCGCAATGGTGTGGAGATGCAACAGAGTATCTGCCAGGCAGCTGCCCAG
ATTCAGTCAGAGTTATCCCTTCAACTGCTTCAGCAAATGGAAACCTTCAGCAATCGCCAGTTTACCAGC
AGACTTCTCACATGATGAGTGCATTGTCTACCAATGAGGATATGCAAATGCAGTGTGAATTTGTTTCTTC
TCCTCTGCAGTTTCTGGAAATGAACTTCTACAACCTACCACACAGCAGGTTGCAACCCCTGGCACTACC
ATGTTTCAGACATCAAGTTCAGGAGATGGAGAAGAACTGGAACACAAGCAAAACAGATTCAGAACAGTG
TCTTTCAGACCATGGTCCAAATGCAACATAGTGGGACAATCAACCTCAAGTTAACCTTTTTTCATCCAC
AAAAAGTATGATGAGTGTTCAGAATAGTGGTACCCAACAACAAGGTAATGGTTTTATTCAGCAAGGGAAT
GAGATGATGTCACCTTCAATCTGGAATTTTTTGCAGCAGTCTTCTCATTACAGGCCCAACTTTTTTCATC
CTCAAAATCCTATTGCCGATGCTCAGAACCTTTCCAGGAACTCAAGTTCTCTCTTTCATAGTCCAAA
TCCTATTGTCCACAGTCAGACTTCTACAACCTCTCTGAACAAATGCAGCCTCCAATGTTTCACTCTCAA
AGTACCATTGCTGTGTTACAGGGCTCTTCAGTTCTCAAGACCAGCAGTCAACCAACATATTTCTTTCCC
AGAGTCCCATGAATAATCTTCAGACTAACACAGTAGCCCAAGAAGCATTTTTTGCAGCACCAGCACTCAAT
TTCTCCACTTCAGTCAACATCAAACAGTGAACAACAAGCTGCTTTCACACAGCAAGTCCAAATATCACAC
ATCCAGACTCCTATGCTTTCACAAGAACAGGCACAACCCCGCAGCAGGGTTTATTTTCAGCCTCAGGTGG
CCCTGGGCTCCCTTCCACCTAATCCAATGCCTCAAAGCCAACAAGGAACCATGTTCCAGTCACAGCACTC
AATAGTTGCCATGCAGAGTAACTCTCCATCCCAGGAACAGCAGCAGCAGCAGCAACAGCAGCAGCAACAG
CAGCAGCAACAACAACAGAGCATTTTATTCAGTAAATCAGAATACCATGGCTACAATGGCGTCTCCAAAGC
AACCACCACCAACATGATATTCACCCAAATCAAATCCAATGGCTAATCAGGAGCAACAGAACCAGTC
AATTTTTACCAACAAGTAACATGGCCCAATGAATCAAGAGCAACAGCCCATGCAATTCAGAGTCAG
TCCACAGTTTCTCACTTCAGAACCAGGCTCTACCCAGTCGGAATCATCACAGACCCCTTGTTCATA
GCTCTCCTCAGATTGAGTTGGTACAAGGGTCACCTAGTTCTCAAGAGCAGCAAGTAACTCTTCTTATC
TCCAGCATCCATGTCTGCCTTGCAGACCAGTATAAATCAACAAGATATGCAACAGTCTCCTTTTATTCC
CCTCAGAACAACATGCCTGGAATTCAGGAGCCACATCTTCGCCTCAACCAAGGCTACTTTATTTTACA
ACACAGCAGGAGGCACAATGAACCAACTGCAGAATTCTCCTGGCTCATCTCAGCAGACATCAGGAATGTT
CTTATTTGGCATTCAAAATAACTGTAGTCAGCTTTAACCTCTGGACCAGCTACATTGCCTGATCAGTTG
ATGGCCATAAGTCAGCCAGGCCAACCACAAAACGAGGGCCAGCCACCTGTGACAACACTTCTTCTCAGC
AAATGCCAGAGAATTCTCCACTGGCATCTCTATAAACACCAACCAGAACATCGAAAAGATTGATTTGCT
TGTTTTATTGCAAAACCAAGGGAACAACCTGACTGGCTCCTTT

ACGCGTACGCGGCCGCTCGAG - GFP Tag - GTTTAA

Protein Sequence: >RG216142 representing NM_006599
 Red=Cloning site Green=Tags(s)

```

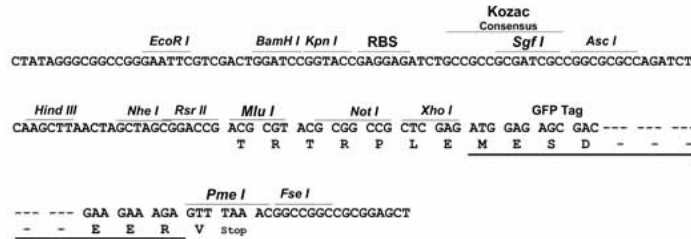
MPSDFISLLSADLDLESPKSLYSRESVYDLLPKELQLPPSRETSVASMSQTSNGEAGSPPPVAVAADASS
APSSSSMGACSSFTTSSSPTIYSTSVTDSKAMQVESCSSAVGVSNRGVSEKQLTNSVTVQHPSTPKRHT
VLYISPPEPDLDNSRMSCQDEGCGLESEQSCSMWEDSPSNFSNMSTSSYNDNTEVPRKSRKRNPKQRP
GVKRRDCEESNMDIFDADSAKAPHYVLSQLTTDNKGNKAGNGTLENQKGTGVKKSPMLCGQYPVKSEK
ELKIVVQPETQHRARYLTEGSRGSVKDRTOQGFPVTKLEGHNEPVVLQVFGNDSGRVKPHGFYQACRVT
GRNTTPCKEVDIEGTTVIEVGLDPSNNMTLAVDCVGLKLRNADVEARIGIAGSKKKSTRARLVFRVNM
RKDGSTLTLQTPSSPILCTQPAGVPEILKSLHSCSVKGEEVFLIGKNFLKGTQVIFQENVSDENSWSK
EAEIDMELFHQNHILVIVPPYHDQHITLPSVGIYVVTNAGRSHDVQPFTYTPDAAAGALNVNVKKEIS
SPARPCSFEEAMKAMKTTGCNLDKVNIIIPNALMTPLIPSSMIKSEDVTPMEVTAEKRSSTIFKTTKSVGS
TQQTLENI SNIAGNGSFSSPSSSHLPSENEKQQIQPKAYNPETLTTIQTQDISQPGTFPAVSASSQLPN
SDALLQATQFQTRETQSREILQSDGTVVNLSQLTEASQQQQQSPLQEQAQTLQQQISSNIFSPSPNSVSQ
LQNTIQQLQAGSFTGSTASGSSGSVDLVQQVLEAQQQLSSVLF SAPDGNENVQEQLSADIFQQVSQIQSG
VSPGMFSSSTEPTVHTRPDNLLPGRAESVHPQSENTLSNQQQQQQQQQVMES SAAMVMEMQQSICQAAAQ
IQSELFPSTASANGNLQQSPVYQQTSHMSALSTNEDMQMCELFSSPPAVSGNETSTTTTQQVATPGTT
MFQTSSSGDGEETGTQAKQIQNSVFTMVQMHSQGNQPVNLFSSTKSMSVQNSGTQQQGNGLFQQGN
EMMSLQSGNFLQSSHSQAQLFHPQNP IADAQNL SQETQGS LFHSPNPIVHSQTSTTSSEMQPMPFHSQ
STIAVLQGSVSPDQDQSTNIFLSQSPMNNLQNTVAQEAFFAAPNSISPLQSTSNSEQAAAFQQQAPI SH
IQTPMLSQEQAPPPQQGLFQPQVALGSLPPNMPQSQQGTMFQSQHSIVAMQSNPSQEQQQQQQQQQQQ
QQQQQQSILFSNQNTMATMASPKQPPPNMIFNPNQNPANQEQQNQSI FHQQSNMAMPNQEQPMQFQSQ
STVSSLQNPQPTQSESSQTPLFHSSPQIQLVQGSPPSSQEQQVTLFLSPASMSALQTSINQQDMQQSPLYS
PQNNMPGIQGATSSPQPQATL FHNTAGGTMNQLQNSPGSSQQTSGMFLFGIQNNCSQLLTS GPATLPDQL
MAISQPGQPQNEGQPPVTTLLSQMPENSPLASSINTNQNI EKIDLLVSLQNGNNLTGFS
  
```

TRTRPLE - GFP Tag - V

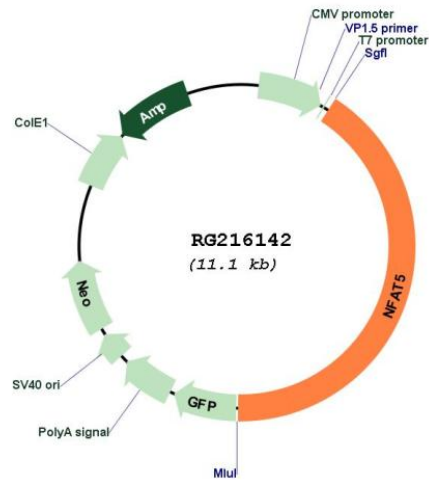
Restriction Sites: SgfI-MluI

Cloning Scheme:

Cloning sites used for ORF Shutting:



Plasmid Map:



ACCN: NM_006599

ORF Size: 4593 bp

OTI Disclaimer: Due to the inherent nature of this plasmid, standard methods to replicate additional amounts of DNA in *E. coli* are highly likely to result in mutations and/or rearrangements. Therefore, OriGene does not guarantee the capability to replicate this plasmid DNA. Additional amounts of DNA can be purchased from OriGene with batch-specific, full-sequence verification at a reduced cost. Please contact our customer care team at custsupport@origene.com or by calling 301.340.3188 option 3 for pricing and delivery.

The molecular sequence of this clone aligns with the gene accession number as a point of reference only. However, individual transcript sequences of the same gene can differ through naturally occurring variations (e.g. polymorphisms), each with its own valid existence. This clone is substantially in agreement with the reference, but a complete review of all prevailing variants is recommended prior to use. [More info](#)

OTI Annotation: This clone was engineered to express the complete ORF with an expression tag. Expression varies depending on the nature of the gene.

Components:	The ORF clone is ion-exchange column purified and shipped in a 2D barcoded Matrix tube containing 10ug of transfection-ready, dried plasmid DNA (reconstitute with 100 ul of water).
Reconstitution Method:	<ol style="list-style-type: none">1. Centrifuge at 5,000xg for 5min.2. Carefully open the tube and add 100ul of sterile water to dissolve the DNA.3. Close the tube and incubate for 10 minutes at room temperature.4. Briefly vortex the tube and then do a quick spin (less than 5000xg) to concentrate the liquid at the bottom.5. Store the suspended plasmid at -20°C. The DNA is stable for at least one year from date of shipping when stored at -20°C.
RefSeq:	NM_006599.4
RefSeq Size:	13253 bp
RefSeq ORF:	4596 bp
Locus ID:	10725
UniProt ID:	O94916
Cytogenetics:	16q22.1
Domains:	IPT
Protein Families:	Druggable Genome, Transcription Factors
Protein Pathways:	Axon guidance, B cell receptor signaling pathway, Natural killer cell mediated cytotoxicity, T cell receptor signaling pathway, VEGF signaling pathway, Wnt signaling pathway
Gene Summary:	The product of this gene is a member of the nuclear factors of activated T cells family of transcription factors. Proteins belonging to this family play a central role in inducible gene transcription during the immune response. This protein regulates gene expression induced by osmotic stress in mammalian cells. Unlike monomeric members of this protein family, this protein exists as a homodimer and forms stable dimers with DNA elements. Multiple transcript variants encoding different isoforms have been found for this gene. [provided by RefSeq, Jul 2008]