

## Product datasheet for **RG216104**

### **PCLAF (NM\_001029989) Human Tagged ORF Clone**

#### **Product data:**

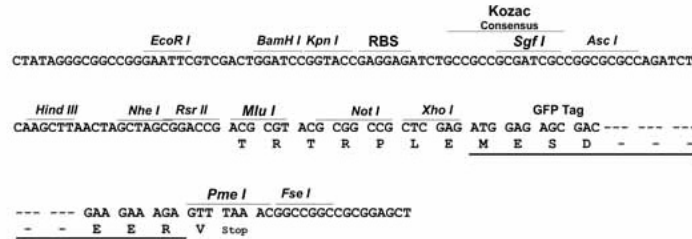
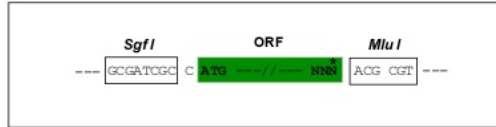
Product Type:	Expression Plasmids
Product Name:	PCLAF (NM_001029989) Human Tagged ORF Clone
Tag:	TurboGFP
Symbol:	PCLAF
Synonyms:	KIAA0101; L5; NS5ATP9; OEATC; OEATC-1; OEATC1; p15(PAF); p15/PAF; p15PAF; PAF; PAF15
Mammalian Cell Selection:	Neomycin
Vector:	pCMV6-AC-GFP (PS100010)
E. coli Selection:	Ampicillin (100 ug/mL)
ORF Nucleotide Sequence:	>RG216104 representing NM_001029989 Red=Cloning site Blue=ORF Green=Tags(s)  TTTTGTAATACGACTCACTATAGGGCGGCCGGAATTCGTCGACTGGATCCGGTACCGAGGAGATCTGCC GCC <b>CGATCGCC</b>  ATGGTGCGGACTAAAGCAGACAGTGTTCAGGCACCTTACAGAAAAGTGGTGGCTGCTCGAGCCCCAGAA AGGTGCTTGGTTCTTCCACCTCTGCCACTAATTCGACATCAGTTTCATCGAGGAAAGAGCATGTCCTTTG CAACCTGATCACACAAATGATGAAAAAGAATAGAAGTTTCTCATTTCATCTTTGAA  AC <b>CGGT</b> ACGCGGCCGCTCGAG - GFP Tag - GTTTAA
Protein Sequence:	>RG216104 representing NM_001029989 Red=Cloning site Green=Tags(s)  MVRTKADSVPGTYRKVVAARAPRKVLGSSTSATNSTSVSSRKEHVLNLIQMMKNRTFSFIFE  TRTRPLE - GFP Tag - V
Restriction Sites:	Sgfl-MluI



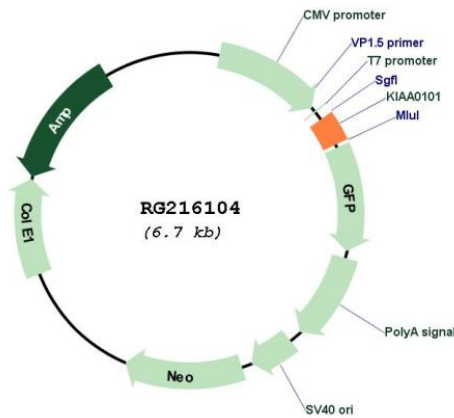
[View online »](#)

Cloning Scheme:

Cloning sites used for ORF Shutting:



Plasmid Map:



ACCN: NM\_001029989

ORF Size: 195 bp

<b>OTI Disclaimer:</b>	The molecular sequence of this clone aligns with the gene accession number as a point of reference only. However, individual transcript sequences of the same gene can differ through naturally occurring variations (e.g. polymorphisms), each with its own valid existence. This clone is substantially in agreement with the reference, but a complete review of all prevailing variants is recommended prior to use. <a href="#">More info</a>
<b>OTI Annotation:</b>	This clone was engineered to express the complete ORF with an expression tag. Expression varies depending on the nature of the gene.
<b>Components:</b>	The ORF clone is ion-exchange column purified and shipped in a 2D barcoded Matrix tube containing 10ug of transfection-ready, dried plasmid DNA (reconstitute with 100 ul of water).
<b>Reconstitution Method:</b>	<ol style="list-style-type: none"><li>1. Centrifuge at 5,000xg for 5min.</li><li>2. Carefully open the tube and add 100ul of sterile water to dissolve the DNA.</li><li>3. Close the tube and incubate for 10 minutes at room temperature.</li><li>4. Briefly vortex the tube and then do a quick spin (less than 5000xg) to concentrate the liquid at the bottom.</li><li>5. Store the suspended plasmid at -20°C. The DNA is stable for at least one year from date of shipping when stored at -20°C.</li></ol>
<b>RefSeq:</b>	<a href="#">NM_001029989.3</a>
<b>RefSeq Size:</b>	1345 bp
<b>RefSeq ORF:</b>	198 bp
<b>Locus ID:</b>	9768
<b>UniProt ID:</b>	<a href="#">Q15004</a>
<b>Cytogenetics:</b>	15q22.31
<b>Protein Families:</b>	Druggable Genome
<b>Gene Summary:</b>	PCNA-binding protein that acts as a regulator of DNA repair during DNA replication. Following DNA damage, the interaction with PCNA is disrupted, facilitating the interaction between monoubiquitinated PCNA and the translesion DNA synthesis DNA polymerase eta (POLH) at stalled replisomes, facilitating the bypass of replication-fork-blocking lesions. Also acts as a regulator of centrosome number.[UniProtKB/Swiss-Prot Function]