

Product datasheet for **RG216072**

GPR177 (WLS) (NM_001002292) Human Tagged ORF Clone

Product data:

| | |
|---------------------------|--|
| Product Type: | Expression Plasmids |
| Product Name: | GPR177 (WLS) (NM_001002292) Human Tagged ORF Clone |
| Tag: | TurboGFP |
| Symbol: | GPR177 |
| Synonyms: | C1orf139; EVI; GPR177; mig-14; MRP |
| Mammalian Cell Selection: | Neomycin |
| Vector: | pCMV6-AC-GFP (PS100010) |
| E. coli Selection: | Ampicillin (100 ug/mL) |



[View online »](#)

ORF Nucleotide Sequence:

>RG216072 representing NM_001002292
 Red=Cloning site Blue=ORF Green=Tags(s)

TTTTGTAATACGACTCACTATAGGGCGGCCGGAATTCGTCGACTGGATCCGGTACCGAGGAGATCTGCC
 GCC**GCGATCGCC**

ATGGCTGGGGCAATTATAGAAAACATGAGCACCAAGAAGCTGTGCATTGTTGGTGGGATTCTGCTCGTGT
 TCCAAATCATCGCCTTTCTGGTGGGAGGCTTGATTGGGCCACAACGGCAGTGTCTACATGTCCGTGAA
 ATGTGTGGATGCCGTAAGAACCATCACAGACAAAATGGTTCGTGCCTTGGGGACCAATCATTGTGAC
 AAGATCCGAGACATTGAAGAGGCAATCCAAGGAAAATTGAAGCCAATGACATCGTGTCTTCTGTTCCACA
 TTCCCCTCCCCACATGGAGATGAGTCCTTGGTCCAATTCATGCTGTTTATCCTGCAGCTGGACATTGC
 CTTCAAGCTAAACAACCAAAATCAGAGAAAATGCAGAAGTCTCCATGGACGTTTCCCTGGCTTACCGTGAT
 GACGCGTTTGTGAGTGGACTGAAATGGCCATGAAAGAGTACCACGGAACTCAATGCACCTTCACAT
 CTCCCAAGACTCCAGAGCATGAGGGCCGTTACTATGAATGTGATGTCCTTCTTTTCATGGAATTTGGGTC
 TGTGGCCATAAGTTTTACCTTTAAACATCCGGCTGCCTGTGAATGAGAAGAAGAAAATCAATGTGGGA
 ATTTGGGGAGATAAAGGATATCCGGTTGGTGGGGATCCACCAAAAATGGAGGCTTCACCAAGGTGTGGTTTG
 CCATGAAGACCTTCTTACGCCAGCATCTTCATCATTATGGTGTGGTATTGGAGGAGGATCACCATGAT
 GTCCCCACCCAGTGCTTCTGGAAAAAGTCATCTTGGCCTTGGGATTTCCATGACCTTTATCAATATC
 CCAGTGAATGGTTTTCCATCGGTTTGGACTGGACCTGGATGCTGCTGTTTGGTACATCCGACAGGGCA
 TCTTCTATGCGATGCTTCTGCTTCTGGATCATCTTCTGTGGCAGCAGCATGATGGATCAGCAGGAGCG
 GAACCACATCGCAGGGTATTGGAAGCAAGTCGGACCCATTGCCGTTGGCTCCTTCTGCCTTTCATATTT
 GACATGTGTGAGAGAGGGGTACAATCAGCAATCCCTTCTACAGTATCTGGACTACAGACATTGGAACAG
 AGCTGGCCATGGCCTTCATCATCTGGCTGGAATCTGCCTCTACTTCTGTTTCTATGCTTCAT
 GGTATTTCAAGGTGTTTCGGAACATCAGTGGGAAGCAGTCCAGCCTGCCAGCTATGAGCAAAAGTCCGCGCG
 CTACACTATGAGGGGCTAATTTTTAGGTTCAAGTTCCTCATGCTTATCACCTGGCCTGCCTGCCATGA
 CTGTCTCTTCTCATCGTTAGTCAGGTAACGGAAGGCCATTGGAATGGGGCGCGCTCACAGTCCAAGT
 GAACAGTGCCTTTTTACAGGCATCTATGGGATGTGGAATCTGTATGCTTTGCTCTGATGTTCTTGTAT
 GCACCATCCATAAAAATATGGAGAAGACCAGTCCAATGGAATGCAACTCCCATGTAATCGAGGGGAA
 ATTGTGCTTTGTTGTTTCGGAACCTTATCAAGAATTGTTACGCGCTTCGAAATATTCCTTCATCAATGA
 CAACGCAGCTTCTGGTATT

AG**CGGACCG**ACGCGTACGCGGCCGCTCGAG – GFP Tag – GTTTAA

Protein Sequence:

>RG216072 representing NM_001002292
 Red=Cloning site Green=Tags(s)

MAGAIENMSTKKLCIVGGILLVFQIIAFLVGLIGPTTAVSYMSVKVDARKNHHKTKWFVPWGNHCD
 KIRDIEEAIPIREIEANDIVFSVHIPLPHMEMSPWFQFMLFILQLDIAFKLNNQIRENAEVSMDVSLAYRD
 DAFAEWTEMAHERVPRKLKCTFTSPKTPHEGRYYECDVLPFMEIGSVAHKFYLLNIRLPVNEKKKINVG
 IGEIKDIRLVGIHQNGGFTKVFAMKTFITPSIFIMVWYWRITMMSRPPVLEKVIIFALGISMTFINI
 PVEWFSIGFDWTWMLLFGDIRQGIYAMLLSFWIIFCGEHMDQHERNHIAGYWKQVGPVIAVGSFCLFIF
 DMCERGVQLTNPFSIWTTDIGTELAMAFIIVAGICLCLYFLFLCFMVVQVFRNISGKQSSLPAMSKVRR
 LHYEGLIFRFKFLMLITLACAAMTIVFFIVSQVTEGHWKWGGVTQVNSAFFTGIYGMWNLVYFALMFLY
 APSHKNYGEDQSNMQLPCKSREDCALFVSELYQELFSASKYSFINDNAASGI

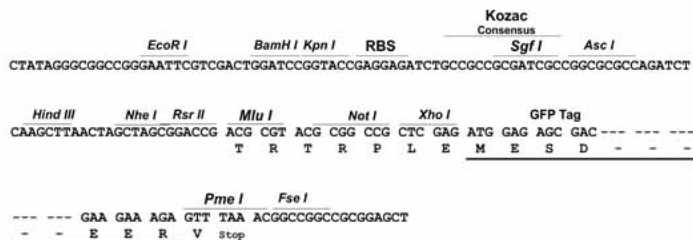
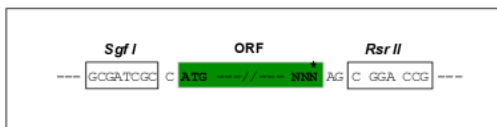
SGP**TRRRLE** – GFP Tag – V

Restriction Sites:

Sgfl-RsrII

Cloning Scheme:

Cloning sites used for ORF Shuttling:


ACCN: NM_001002292

ORF Size: 1629 bp

OTI Disclaimer: The molecular sequence of this clone aligns with the gene accession number as a point of reference only. However, individual transcript sequences of the same gene can differ through naturally occurring variations (e.g. polymorphisms), each with its own valid existence. This clone is substantially in agreement with the reference, but a complete review of all prevailing variants is recommended prior to use. [More info](#)

OTI Annotation: This clone was engineered to express the complete ORF with an expression tag. Expression varies depending on the nature of the gene.

Components: The ORF clone is ion-exchange column purified and shipped in a 2D barcoded Matrix tube containing 10ug of transfection-ready, dried plasmid DNA (reconstitute with 100 ul of water).

Reconstitution Method:

1. Centrifuge at 5,000xg for 5min.
2. Carefully open the tube and add 100ul of sterile water to dissolve the DNA.
3. Close the tube and incubate for 10 minutes at room temperature.
4. Briefly vortex the tube and then do a quick spin (less than 5000xg) to concentrate the liquid at the bottom.
5. Store the suspended plasmid at -20°C. The DNA is stable for at least one year from date of shipping when stored at -20°C.

RefSeq: [NM_001002292.3](#), [NP_001002292.3](#)
RefSeq Size: 2072 bp

RefSeq ORF: 1632 bp

Locus ID: 79971

UniProt ID: [Q5T9L3](#)

Cytogenetics: 1p31.3

Protein Families: Transmembrane

Gene Summary: Regulates Wnt proteins sorting and secretion in a feedback regulatory mechanism. This reciprocal interaction plays a key role in the regulation of expression, subcellular location, binding and organelle-specific association of Wnt proteins. Plays also an important role in establishment of the anterior-posterior body axis formation during development (By similarity).[UniProtKB/Swiss-Prot Function]