

Product datasheet for **RG216068**

ASB4 (NM_016116) Human Tagged ORF Clone

Product data:

Product Type:	Expression Plasmids
Product Name:	ASB4 (NM_016116) Human Tagged ORF Clone
Tag:	TurboGFP
Symbol:	ASB4
Synonyms:	ASB-4
Mammalian Cell Selection:	Neomycin
Vector:	pCMV6-AC-GFP (PS100010)
E. coli Selection:	Ampicillin (100 ug/mL)
ORF Nucleotide Sequence:	>RG216068 representing NM_016116 Red=Cloning site Blue=ORF Green=Tags(s)

TTTTGTAATACGACTCACTATAGGGCGGCCGGAATTCGTCGACTGGATCCGGTACCGAGGAGATCTGCC
GCC**CGATCGCC**

ATGGACGGCACCCTGCCCTGTCACTAAATCTGGAGCTGCCAAGTTAGTTAAGAGAAATTTCTTGAGG
CGCTAAAGTCCAATGACTTCGAAAATTGAAGGCTATTTTGATCCAAAGGCAAATAGATGTGGACACTGT
TTTTGAAGTCGAAGATGAGAATATGGTTTTGGCATCTTATAACAAGGTTACTGGTTGCCTAGCTATAAA
TTGAAGTCTTCTGGGCCACAGGCTCCATCTCTGTCTTGTGGCCATGTGGAAATGTCTTCTGGTGC
TACTGGACCACAATGCTACAATCACTGTAGACCAATGGGAAAACCCCTTTCACGTGGCTTGTGAAAT
GGCCAATGTGGATTGTGTTAAGATCCTCTGTGATCGTGGGCAAAGCTCAATTGCTACTCCTTAAGTGG
CACACAGCTTTGCACTTTGTACAACCTCAAGTCCATCTCTGTGCAAGCAATTGGTTTGGAGAGGGG
CGAATGTGAACATGAAGACCAACAACCAAGATGAGGAGACGCCCTTGCACACGGCTGCCACTTCGGCT
TTCGGAGCTGGTGGCCTTCTACGTGGAACACGGGGCCATAGTGGACAGCGTGAATGCCACATGGAGACC
CCCCTGGCCATCGCCGCTACTGGGCCCTCCGCTTAAAGGAGCAGGAGTACAGCACGGAGCACCCTGG
TCTGCCGATGCTGCTTGACTACAAAGCCGAAGTCAATGCCGAGATGACGACTTAAATCTCCCCTCCA
CAAGGCAGCCTGGAAGTGTGACCAGTGTCTCATGCACATGATGCTGGAAGCTGGCGCCGAAGCCAATCTC
ATGGATATCAACGGCTGTGCTGCCATCCAGTACGTGCTGAAGTCACTCCGTGCCCTGCTGCCAGC
CTGAGATCTGCTACCAGCTCCTGTTGAACCATGGGCTGCCGAATATACCCTCCACAGTCCATGAAGT
GATACAGGCTGCCATTCTGTCTAAAGCAATTGAAGTTGTAGTCAATGCCTATGAACACATCAGATGG
AACACAAAGTGGAGAAGAGCTATCCCCGATGATGACTTGGAGAAATACTGGGATTTTACCCTCTCTCT
TACTGTGTGCTGTAACCTCCAAGGACTCTCATGCATTCGAGATGTGCCATTAGAAGAACATTACA
CAACAGATGCCATAGAGCAATTCCTTTGCTTCCCTCCCATGTCATTGAAAAAGTACTTGTCTTTAGAG
CCAGAGGGAATTATTTAT

ACGCGTACGCGGCCGCTCGAG - GFP Tag - GTTTAA



[View online »](#)

Protein Sequence: >RG216068 representing NM_016116
 Red=Cloning site Green=Tags(s)

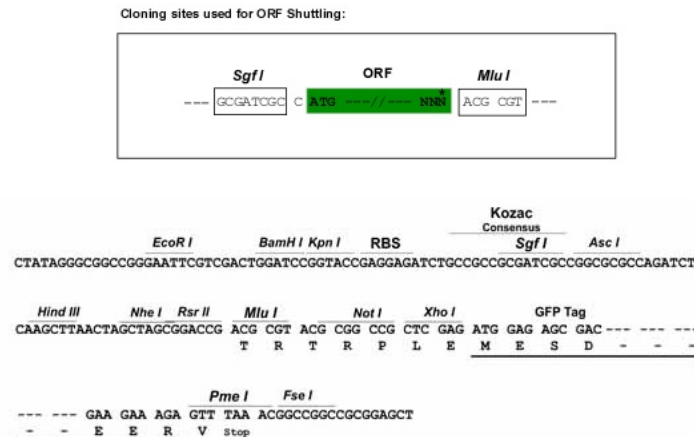
MDGTTAPVTKSGAAKLVKRNFLEALKSNDFGKLKAILIQRQIDVDTVFEVEDENMVLASYKQGYWLP
 SYK LKSSWATGLHL SVLFGHVECLL VLLDHNATINCRPNGKTPLHVACEMANVDCVKILCDRGAKLNCYSLSG
 HTALHFCTTPSSILCAKQLVWRGANVNMKTNNQDEETPLHTAAHFGLSELVAFYVEHGAI VDSVNAHMET
 PLAIAAYWALRFKEQEYSTEHHLVCRMLLDYKAEVNRDDDFKSPHKAAWNCDHVLMMHMLEAGAEANL
 MDINGCAAIQYVLKVT SVRPAAQPEICYQLLLNHGAARIYPPQFHKVIQACHSCPKAIEVVVNAYEHIRW
 NTKWRRRAIPDDDLKDYWDFYHSLFTVCCNSPRTL MHL SRCAIRRTLHNRCHRAIPLLSLPLSLKKYLLLE
 PEGIIY

TRTRPLE - GFP Tag - V

Restriction Sites:

SgfI-MluI

Cloning Scheme:



ACCN: NM_016116

ORF Size: 1278 bp

OTI Disclaimer: The molecular sequence of this clone aligns with the gene accession number as a point of reference only. However, individual transcript sequences of the same gene can differ through naturally occurring variations (e.g. polymorphisms), each with its own valid existence. This clone is substantially in agreement with the reference, but a complete review of all prevailing variants is recommended prior to use. [More info](#)

OTI Annotation: This clone was engineered to express the complete ORF with an expression tag. Expression varies depending on the nature of the gene.

Components: The ORF clone is ion-exchange column purified and shipped in a 2D barcoded Matrix tube containing 10ug of transfection-ready, dried plasmid DNA (reconstitute with 100 ul of water).

Reconstitution Method:

1. Centrifuge at 5,000xg for 5min.
2. Carefully open the tube and add 100ul of sterile water to dissolve the DNA.
3. Close the tube and incubate for 10 minutes at room temperature.
4. Briefly vortex the tube and then do a quick spin (less than 5000xg) to concentrate the liquid at the bottom.
5. Store the suspended plasmid at -20°C. The DNA is stable for at least one year from date of shipping when stored at -20°C.

RefSeq: [NM_016116.3](#)

RefSeq Size: 1281 bp

RefSeq ORF: 1281 bp

Locus ID: 51666

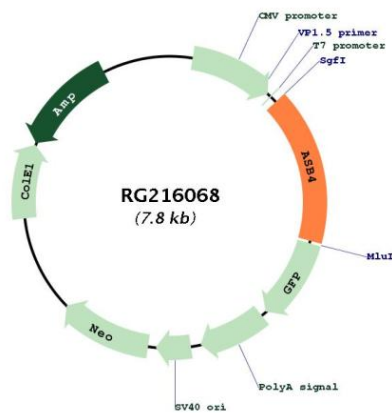
UniProt ID: [Q9Y574](#)

Cytogenetics: 7q21.3

Protein Families: Druggable Genome

Gene Summary: The protein encoded by this gene is a member of the ankyrin repeat and SOCS box-containing (ASB) family of proteins. They contain ankyrin repeat sequence and SOCS box domain. The SOCS box serves to couple suppressor of cytokine signalling (SOCS) proteins and their binding partners with the elongin B and C complex, possibly targeting them for degradation. Multiple alternatively spliced transcript variants have been described for this gene but some of the full length sequences are not known. [provided by RefSeq, Jul 2008]

Product images:



Circular map for RG216068