

Product datasheet for **RG216032**

Semaphorin 3D (SEMA3D) (NM_152754) Human Tagged ORF Clone

Product data:

Product Type:	Expression Plasmids
Product Name:	Semaphorin 3D (SEMA3D) (NM_152754) Human Tagged ORF Clone
Tag:	TurboGFP
Symbol:	SEMA3D
Synonyms:	coll-2; Sema-Z2
Mammalian Cell Selection:	Neomycin
Vector:	pCMV6-AC-GFP (PS100010)
E. coli Selection:	Ampicillin (100 ug/mL)



[View online »](#)

ORF Nucleotide
Sequence:

>RG216032 representing NM_152754
Red=Cloning site Blue=ORF Green=Tags(s)

TTTTGTAATACGACTCACTATAGGGCGGCCGGAATTCGTCGACTGGATCCGGTACCGAGGAGATCTGCC
GCCCGCATCGCC

ATGAATGCTAATAAAGATGAAAGACTTAAAGCCAGAAGCCAAGATTTTCACCTTTTTCTGCTTTGATGA
TGCTAAGCATGACCATGTTGTTTCTCCAGTCACTGGCACTTTGAAGCAAAATATCCAAGACTCAAGCT
AACCTACAAAGACTTGCTGCTTTCAAATAGCTGTATTCCCTTTTTGGGTTTCATCAGAAGGACTGGATTTT
CAAACCTTCTCTTAGATGAGGAAAGAGGCAGGCTGCTCTGGGAGCCAAAGACCACATCTTTCTACTCA
GTCTGGTTGACTTAAACAAAAATTTAAGAAGATTTATTGGCCTGCTGCAAAGGAACGGGTGGAATTATG
TAAATTAGCTGGGAAAGATGCCAATACAGAATGTGCAAATTTTCATCAGAGTACTTCAGCCCTATAACAAA
ACTCACATATATGTGTGGAAGTGGAGCATTTCCATCCAATATGTGGGTATATTGATCTTGGAGTCTACA
AGGAGGATATTATTTCAAACACTAGACACACATAATTTGGAGTCTGGCAGACTGAAATGCCTTTTCGATCC
TCAGCAGCCTTTTCTCAGTAATGACAGATGAGTACCTCTACTCTGGAACAGCTTCTGATTTCCCTTGGC
AAAGATACTGCATTCACCTCGATCCCTTGGGCTACTCATGACCACCACTACATCAGAAGTACATTTTCAG
AGCACTACTGGCTCAATGGAGCAAAATTTATTGGAATTTCTTCATACCAGACACCTACAATCCAGATGA
TGATAAAATATATTTCTTCTTTCGTTGAATCATCTCAAGAAGGCAGTACCTCCGATAAAACCATCCTTTCT
CGAGTTGGAAGAGTTTGTAAAGATGATGTAGGAGGACAACGCAGCCTGATAAACAAGTGGACGACTTTTC
TTAAGGCCAGACTGATTTGCTCAATTCCTGGAAGTGTGGGCGAGATACTTACTTTGATGAGCTTCAAGA
TATTTATTTACTCCCCACAAGAGATGAAAGAAATCCTGTAGTATATGGAGTCTTTACTACAACAGCTCC
ATCTTCAAAGGCTCTGCTGTTTGTGTATAGCATGGCTGACATCAGAGCAGTTTTAATGGTCCATATG
CTCATAAGGAAAGTGCAGACCATCGTTGGGTGCGATGATGGGAGAATTCCTTATCCACGGCCTGGTAC
ATGTCCAAAGCAAAACCTATGACCACTGATTAAGTCCACCCGAGATTTTCCAGATGATGTCATCAGTTTC
ATAAAGCGGCACTCTGTGATGTATAAGTCCGTATACCCAGTTGCAGGAGGACCAACGTTCAAGAGATCA
ATGTGGATTACAGACTGACACAGATAGTGGTGGATCATGTTCATTGCAGAAGATGGCCAGTACGATGTAAT
GTTTCTTGGAACAGACATTGGAAGTGCCTCAAAGTTGTCAGCATTTCAAAGGAAAAGTGGAAATATGGAA
GAGGTAGTCTGGAGGAGTTGCAGATATCAAGCACTCATCAATCATCTTGAACATGGAATTGTCTCTGA
AGCAGCAACAATTGTACATTGGTTCCCGAGATGGATTGGTTCAGCTCTCCTTGCACAGATGCGACACTTA
TGGGAAAGCTTGGCAGACTGTTGTCTTCCAGAGACCCCTACTGTGCCTGGGATGGAAATGCATGCTCT
CGATATGCTCCTACTTCTAAAAGGAGAGCTAGACGCCAAGATGTAAAATATGGCGACCCAATCACCCAGT
GCTGGGACATCGAAGACAGCATTAGTCATGAAACTGCTGATGAAAAGGTGATTTTTGGCATTGAATTTAA
CTCAACCTTTCTGGAATGTATACCTAAATCCCAACAAGCAACTATTAATGGTATATCCAGAGGTACAGGG
GATGAGCATCGAGAGGAGTTGAAGCCCAGTAAAGAAATCATCAAAACGGAATATGGGCTACTGATTCGAA
GTTTGCAGAAGAAGGATTTCTGGGATGATTTACTGCAAAGCCCAGGAGCACACTTTTCATCCACACCATAGT
GAAGCTGACTTTGAATGTATTGAGAATGAACAGATGGAAAATACCCAGAGGGCAGAGCATGAGGAGGGG
AAGGTCAAGGATCTATTGGCTGAGTCACGGTTGAGATACAAAGACTACATCCAAATCCTTAGCAGCCCAA
ACTTCAGCCTCGACCAGTACTGCGAACAGATGTGGCACAGGGAGAAGCGGAGACAGAGAAAACAAGGGGG
CCCAAAGTGAAGCACATGCAGGAAATGAAGAAGAAACGAAATCGAAGACATCACAGAGACCTGGATGAG
CTCCCTAGAGCTGTAGCCACG

ACGCGTACGCGGCCGCTCGAG – GFP Tag – GTTTAA

Protein Sequence: >RG216032 representing NM_152754
 Red=Cloning site Green=Tags(s)

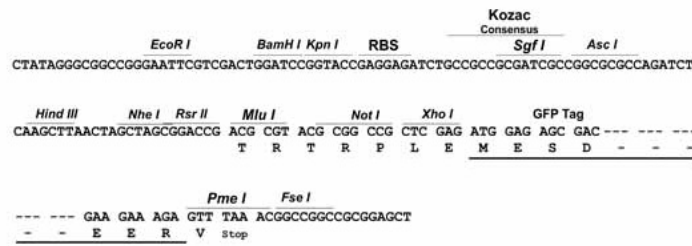
MNANKDERLKARSQDFHLFPALMML SMTMLFLPVTGTLKQNIPLKLYKDLLLSNSCIPFLGSSEGLDF
 QTLLEDEERGRLLL GAKDHI FLLSLVDLNKNFKKIYWPAKVERVELCKLAGKDANTECANFIRVLQPYNK
 THIVYVCGTGAFHPICGYIDLGVYKEDIIFKLDTHNLESGRLKCPFDPPQPFASVMTDEYLYSGTASDFLG
 KDTAFTRSLGPTHDDHYYIRTDISEHYWLNKAKFIGTFFIPDTPYNDPDDDKIYFFFRESSQEGSTSDKTILS
 RVGRVCKNDVGGQRSLINKWTTFLKARLICSIPGSDGADTYFDELQDIYLLPTRDERNPVVYGVFTTTSS
 IFKGSAVCVYSMADIRAVFNGPYAHKESADHRWVQYDGRIPYPRPGTSPSKTYDPLIKSTRDFPDDVISF
 IKRHSVMYKSVYPVAGGPTFKRINVDYRLTQIVVDHVIAEDGQYDVMFLGTDIGTVLKVVISKEKWNME
 EVVLEELQIFKHSSIIILNMELESLKQQQLYIGSRDGLVQLSLHRCDTYGKACADCCCLARDPYCAWDGNACS
 RYAPTSKRARRQDVKYGDPITQCWDIEDSISHETADEKVIKIEFNSTFLECIPKSSQATIKWYIQRSG
 DEHREELKPDRIKTEYGLLIRSLQKKGSMYYCKAQEHTFIHTIVKLTNLVIENEQMENTQRAEHEEG
 KVKDLLAESRLRYKDYIQLSSPNFSLDQYCEQMWHREKRRQRNKGPKWKHMQEMKKKRNRRHRDLDE
 LPRAVAT

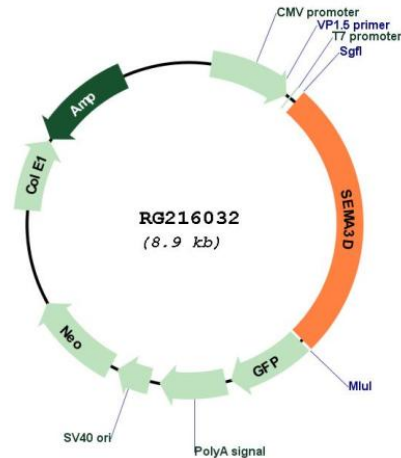
TRTRPLE - GFP Tag - V

Restriction Sites: SgfI-MluI

Cloning Scheme:

Cloning sites used for ORF Shuttling:



Plasmid Map:


ACCN: NM_152754

ORF Size: 2331 bp

OTI Disclaimer: The molecular sequence of this clone aligns with the gene accession number as a point of reference only. However, individual transcript sequences of the same gene can differ through naturally occurring variations (e.g. polymorphisms), each with its own valid existence. This clone is substantially in agreement with the reference, but a complete review of all prevailing variants is recommended prior to use. [More info](#)

OTI Annotation: This clone was engineered to express the complete ORF with an expression tag. Expression varies depending on the nature of the gene.

Components: The ORF clone is ion-exchange column purified and shipped in a 2D barcoded Matrix tube containing 10ug of transfection-ready, dried plasmid DNA (reconstitute with 100 ul of water).

Reconstitution Method:

1. Centrifuge at 5,000xg for 5min.
2. Carefully open the tube and add 100ul of sterile water to dissolve the DNA.
3. Close the tube and incubate for 10 minutes at room temperature.
4. Briefly vortex the tube and then do a quick spin (less than 5000xg) to concentrate the liquid at the bottom.
5. Store the suspended plasmid at -20°C. The DNA is stable for at least one year from date of shipping when stored at -20°C.

RefSeq: [NM_152754.2](#), [NP_689967.2](#)

RefSeq Size: 6276 bp

RefSeq ORF: 2334 bp

Locus ID: 223117

UniProt ID: [O95025](#)

Cytogenetics: 7q21.11

Domains:	IG, PSI
Protein Families:	Transmembrane
Protein Pathways:	Axon guidance
Gene Summary:	<p>This gene encodes a member of the semaphorin III family of secreted signaling proteins that are involved in axon guidance during neuronal development. The encoded protein contains an N-terminal Sema domain, an immunoglobulin like domain and a C-terminal basic domain. The protein encoded by this gene binds neuropilin and plays an important role in cardiovascular development. [provided by RefSeq, Aug 2016]</p>