

## Product datasheet for **RG216017**

### PCDHA6 (NM\_031848) Human Tagged ORF Clone

#### Product data:

Product Type:	Expression Plasmids
Product Name:	PCDHA6 (NM_031848) Human Tagged ORF Clone
Tag:	TurboGFP
Symbol:	PCDHA6
Synonyms:	CNR2; CNRN2; CNRS2; CRNR2; PCDH-ALPHA6
Mammalian Cell Selection:	Neomycin
Vector:	pCMV6-AC-GFP (PS100010)
E. coli Selection:	Ampicillin (100 ug/mL)



[View online »](#)

ORF Nucleotide  
Sequence:

>RG216017 representing NM\_031848  
Red=Cloning site Blue=ORF Green=Tags(s)

TTTTGTAATACGACTCACTATAGGGCGGCCGGAATTCGTCGACTGGATCCGGTACCGAGGAGATCTGCC  
GCC**CGGATCGCC**

ATGGTGTTTACCCCGGAGGATAGATTGGGAAAGCAATGTCTGCTCCTCCCGCTTCTGCTCCTCGCAGCCT  
GGAAGGTGGGAGCGGCCAGCTCCACTACTCCGTACCCGAGGAGGCCAAACACGGCACCTTCGTGGGCCG  
GATCGCGCAGGACCTGGGGCTGGAGCTGGCGGAGCTGGTGCCGCGCTGTTTCAGGATGGCCTCCAAGAC  
CGCGAGGACCTTCTGGAGGTAATCTGCAGAATGGCATTGTTGTTGTGAATTCTCGGATCGACCGGAGG  
AGCTGTGCGGGCGGAGCGCGGAGTGCAGCATCCACCTGGAGGTGATCGTGGACAGGCCGCTGCAGGTTTT  
CCATGTGGACGTGGAGGTGAGGGACATTAACGACAACCCGCCCTTGTCCCGGTAGAGGAACAAAGAGTG  
CTGATTTACGAATCTAGGCTGCCAGATTCTGTGTTTCCACTGGAGGGCGCGTCCGATGCAGATGTTGGCT  
CAAATTCATCTTAACCTATAAACTCAGTTCTAGCGAATACTTCGGGCTAGATGTAAAAATAAACAGTGA  
TGACAATAAACAAATTGGGCTCTTATTAAGAAAATCCTTGGACAGAGAGGAAGCTCCTGCACACAACCTTA  
TTCTGACAGCCACAGATGGGGGCAAACCTGAGCTCACAGGCACTGTTTCAGCTGCTGGTACAGTGTCTGG  
ATGTGAATGATAATGCTCCCACTTTGAAACAGTCTGAATACGAAGTAAGAATATTCGAAAATGCAGACAA  
CGGAACAACAGTTATCAGACTGAATGCTTCTGATCGGGATGAAGGAGCGAATGGGGCAATTCATATTCT  
TTAATAGCCTTGTTCAGCCATGGTTATTGACCACTTATGATAGATCGAAAATACGGGAGAAAATAGTGA  
TTCGGGGTAATTTGGATTTTGAACAAGAAAACCTATACAAAATCCTCATTGACGCCACGGACAAAGGCCA  
TCCTCCCATGGCGGGTATTGCACCGTTTTAGTGAGAAATTTGGATAAAAATGATAACGTCCCTGAGATA  
GCACTGACTTCTTATCCTTGCCTGTACGTGAAGACGCTCAATTTGGTACTGTATCGCCCTAATTAGCG  
TGAACGACCTCGATTAGGTGCCAACGGCAGGTGAAGTCTCGTGCAGCCTCAGTCCCTTTCAAGCT  
GGTGTCCACCTTCAAGAATTACTACTCGTTGGTGTGGACAGTGCCTGGACCGGAGAGCGTGTTCGGCC  
TATGAGTTGGTGTAAACCGCGGGACGGGGCTCGCCTTCGCTGTGGGCCACCGCCAGCTTGTCTGTGG  
AGGTGGCCGACATGAATGACAATGCTCCGGCGTTCGCGCAGCCGAGTACACAGTGTTCGTGAAGGAGAA  
CAACCCGCGGGCTGCCACATCTTACGGTGTCTGCGCGAGACGCGGACGCGCAGGAGAACGCGTGGT  
TCCTACTCGTGGTGGAGCGGGGTGGGCGAGCGCGCTTGTGAGCTACATTTCCGGTGCACGCGGAGA  
GCGGCAAGGTGTACGCGCTGCAGCCGCTGGACCACGAGGAGCTAGAGCTGCTGCAGTTTCAGGTGAGCGC  
GCGCGACGCGGGCTGCCGCTTGGGCGACACGTGACGCTGCAGGTGTTTCGTGCTGGACGAGAACGAC  
AACGCGCCGGCGCTGCTGGCGCCTCGGGTGGTGGTACTGGTGGTGCAGTGCAGGAGCTGGTCCCGCGT  
CACTGGGTGCAGGCAAGTGGTGGCGAAGTGCAGCGAGTTGACGCCGACTCAGGCTACAACGCGTGGCT  
TTCGTATGAGCTGCAGCCCCGGCAAGCAGCGCTCGCTTCCCGTTTCGCGTGGGGCTGTACACGGGCGAG  
ATCAGCACCCTCGTGTCTGGACGAAGCGGACTCTCCGCGCCACCGGCTGCTGGTGTGGTGAAGACC  
ACGGTGCAGCCGGCGTGCAGCGACGGCCACGGTCTGGTGTGCTGGTGGAGAGTGGCCAGGCTCCAAA  
GGCGTCATCACGGGCGTGGTGGGCGCCGCGGGCCAGAGGCGGCGCTGGTGGATGTCAACGTGTACCTG  
ATCATCGCATCTGCGCGGTATCCAGCCTGCTGGTCTCAGCTACTGCTGTACACAGCGCTGCGGTGCT  
CGGCGCCACCCACCGAGGGCGCGTGCACGGCGGACAAGCCACGCTGGTGTGCTCCAGCGCAGTGGGGAG  
CTGGTCTACTGCAGCAGAGGCGGACAGGGTGTGCTCCGGGGAGGGCCACCCAAGATGGATCTCATG  
GCCTTTAGCCCCAGCCTTTCACCTTGTCTATTATGATGGTAAGGCGGAGAATCAGGATTTAAATGAAG  
ATCATGATGCCAAAGTAAGTGAATTTTCA

AG**CGGACCG**ACGCGTACGCGGCCGCTCGAG - GFP Tag - GTTTAA

**Protein Sequence:**

>RG216017 representing NM\_031848  
 Red=Cloning site Green=Tags(s)

```
MVFTPEDRLGKQCLLLPLLLLAAWKVGSGQLHYSVPPEAKHGTFVGRIAQDLGLELAELVPRLFRMASKD
REDLLEVNLRNGILFVNSRIDREELCGRSAECSIHLEVIIVDRPLQVFHVDVEVRDINDNPPLFPVEEQRV
LIYESRPLPDSVFPLEGASDADVGSNSILTYKLSSEYFGLDVKINSDDNKQIGLLKKSLDREEAPAHNL
FLTATDGGKPELTGTVQLLVTVLDVNDNAPTFEQSEYEVRIFFENADNGTTVIRLNASDRDEGANGAISYS
FNLSVAAMVIDHFSIDRNTGEIVIRGNLDFEQENLYKILIDATDKGHPPMAGHCTVLRILDKNDNVPEI
ALTSLSLPVREDAQFGTVIALISVNDLDSGANGQVNCSLTPHVPFKLVSTFKNYSLVLDSDALDRESVSA
YELVVATARDDGGSPSLWATASLSVEVADMNDNAPAFAPQPEYTVFVKENPPGCHIFTVSARDADAQENALV
SYSLVERRVGERALSSYISVHAESGKVYALQPLDHEEELLQFQVSARDAGVPPPLGSNVTLQVFLDEND
NAPALLAPRVGGTGGAVSELVPRSLGAGQVVAKVRVDADSGYNWL SYELQPPASSARFPFRVGLYTG
EISTTRVLDEADSPRHLLVVKDHGEPALTATATVLSLVESEGQAPKASSRASVGAAGPEAALVDVNVYL
IIAICAVSLLVLTLLLYTALRCSAPTEGACTADKPTLVCSAVGSWSYSQRRQRVCSEGGPPKMDLM
AFSPSLSPCPIMMGKAENQDLNEDHDAKVSEFS
```

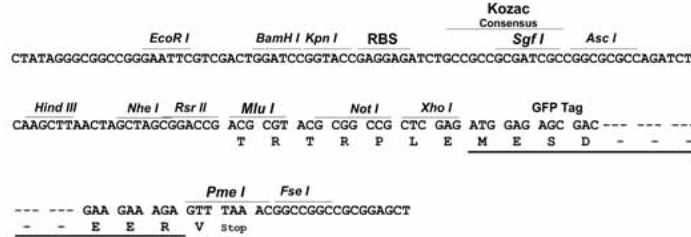
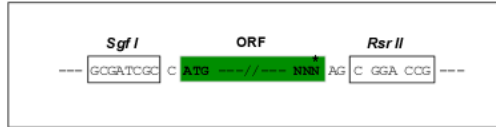
SGPTRRRLE - GFP Tag - V

**Restriction Sites:**

Sgfl-RsrII

Cloning Scheme:

Cloning sites used for ORF Shuttling:



ACCN: NM\_031848

ORF Size: 2409 bp

OTI Disclaimer: The molecular sequence of this clone aligns with the gene accession number as a point of reference only. However, individual transcript sequences of the same gene can differ through naturally occurring variations (e.g. polymorphisms), each with its own valid existence. This clone is substantially in agreement with the reference, but a complete review of all prevailing variants is recommended prior to use. [More info](#)

OTI Annotation: This clone was engineered to express the complete ORF with an expression tag. Expression varies depending on the nature of the gene.

Components: The ORF clone is ion-exchange column purified and shipped in a 2D barcoded Matrix tube containing 10ug of transfection-ready, dried plasmid DNA (reconstitute with 100 ul of water).

**Reconstitution Method:**

1. Centrifuge at 5,000xg for 5min.
2. Carefully open the tube and add 100ul of sterile water to dissolve the DNA.
3. Close the tube and incubate for 10 minutes at room temperature.
4. Briefly vortex the tube and then do a quick spin (less than 5000xg) to concentrate the liquid at the bottom.
5. Store the suspended plasmid at -20°C. The DNA is stable for at least one year from date of shipping when stored at -20°C.

**RefSeq:** [NM\\_031848.3](#)

**RefSeq Size:** 2439 bp

**RefSeq ORF:** 2412 bp

**Locus ID:** 56142

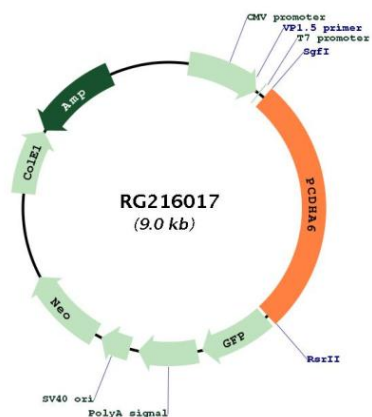
**UniProt ID:** [Q9UN73](#)

**Cytogenetics:** 5q31.3

**Protein Families:** Secreted Protein, Transmembrane

**Gene Summary:** This gene is a member of the protocadherin alpha gene cluster, one of three related gene clusters tandemly linked on chromosome five that demonstrate an unusual genomic organization similar to that of B-cell and T-cell receptor gene clusters. The alpha gene cluster is composed of 15 cadherin superfamily genes related to the mouse CNR genes and consists of 13 highly similar and 2 more distantly related coding sequences. The tandem array of 15 N-terminal exons, or variable exons, are followed by downstream C-terminal exons, or constant exons, which are shared by all genes in the cluster. The large, uninterrupted N-terminal exons each encode six cadherin ectodomains while the C-terminal exons encode the cytoplasmic domain. These neural cadherin-like cell adhesion proteins are integral plasma membrane proteins that most likely play a critical role in the establishment and function of specific cell-cell connections in the brain. Alternative splicing has been observed and additional variants have been suggested but their full-length nature has yet to be determined. [provided by RefSeq, Jul 2008]

Product images:



Circular map for RG216017