

## Product datasheet for **RG216016**

### ZNF398 (NM\_170686) Human Tagged ORF Clone

#### Product data:

Product Type:	Expression Plasmids
Product Name:	ZNF398 (NM_170686) Human Tagged ORF Clone
Tag:	TurboGFP
Symbol:	ZNF398
Synonyms:	P51; P71; ZER6
Mammalian Cell Selection:	Neomycin
Vector:	pCMV6-AC-GFP (PS100010)
E. coli Selection:	Ampicillin (100 ug/mL)



[View online »](#)

**ORF Nucleotide Sequence:**

>RG216016 representing NM\_170686  
 Red=Cloning site Blue=ORF Green=Tags(s)

TTTTGTAATACGACTCACTATAGGGCGGCCGGGAATTCGTCGACTGGATCCGGTACCGAGGAGATCTGCC  
 GCCGCGATCGCC

ATGGCTGAGGCGGCCCGGCCCGACATCTGAATGGGACTCCGAGTGCCTTACATCCCTGCAGCCCCTTC  
 CTCTTCTACACCCAGCAGCAAATGAGGCACACCTGCAGACAGCAGCTATCTCTGTGGACAGTGGT  
 GGCCGCGTGCAGGCTATAGAGAGGAAGGTGGAGATCCACAGCCGCGACTCCTACACCTGGAAGGTCGG  
 ACAGGGACAGCAGAGAAGAACTAGCCAGCTGTGAAAAGACAGTTACCGAGCTTGGGAACCAGCTGGAGG  
 GCAAGTGGGCCGTGCTGGAAACCCTGCTGCAGGAGTACGGGCTGCTGCAGAGGCGGCTGGAGAACTTGA  
 GAACCTGCTGCGCAACAGGAACCTTCTGGATCCTGCGGCTCCCTCCAGGTATTAAGGGAGATATCCAAAG  
 GTGCTGTGGCATTGATGATGTCTCCACTACTTTTCCACTCCAGAGTGGGAAAAATTAGAAGAATGGC  
 AAAAGGAACCTTACAAGAATATCATGAAGGGCACTACGAGTCTCTCATCTCCATGGATTATGCTATAAA  
 TCAACCTGATGTCTTATCTCAGATTCACCCAGAAGGGGAACATAATACAGAGGACCAGGCAGGGCCAGAG  
 GAAAGTGAGATCCACAGACCCAGTGAAGAGCCTGGTATTTCAACATCAGATATTCTGTCTTGGATTA  
 AACAAAGAAGAAGAGCCTCAGGTTGGGGCCACCAGGAGTCCAAGGAGAGTGACGTGTACAAAAGCACTTA  
 TGCTGATGAAGAGCTTGTATCAAAGCTGAAGGCCTTGCTAGATCCTCGTTGTGCCCTGAGGTTCCAGTC  
 CCTTTCTTCTCCACCAGCAGCAGCAAAGGATGCTTTTTTTCAGATGTGGCTTTCAAAGCCAGCAGTCTA  
 CATCCATGACACCTTTTGGAGCTCCAGCCACTGACCTGCCTGAAGCCTCTGAGGGACAAGTACTTTTAC  
 TCAGTTGGGTAGCTATCCCCTCCACCTCCAGTTGGCGAGCAGGTGTTCTCATGCCACCACTGTGGCAAG  
 AATCTCAGCCAAGACATGTTGCTGACCCACCAATGTAGCCATGCTACTGAGCACCCTTACCCTGTGCC  
 AGTGCCCTAAGCACTTTACTCCACAGGCGGACCTCAGCAGCACCCTCCAGGACCATGCCAGCAGACACC  
 CCCACCTGCCCCACTGTGCCAGGACTTTTACTCACCCATCAAGACTTACCTACCATCTTCGGGTCCAT  
 AACAGCACTGAGCGTCTTTCCCTGCTCTGATTGCCCAAGCGCTTTGCTGACCAGGCTCGACTACCA  
 GCCACCGGAGAGCTCATGCAAGCGAAAGGCCCTTCCGCTGTGCCAGTGCAGGAGGCTTCCAGTTGAA  
 AATCAGCCTCCTGCTCCACCAGCGGGTGCATGCACAAGAGCGCCCTTCTCCTGCCCTCAGTGTGGCATT  
 GACTTCAACGGCCACTCGGCCCTGATCCGCCACCAGATGATCCACACAGGCGAGCGTCTTACCCTGCA  
 CTGACTGCAGTAAGAGCTTCATGCGCAAGGAGCACCTGCTGAACCACCGGCGGCTGCACACAGGCGAGCG  
 GCCCTTCAAGTGTCTCACTGTGGCAAGAGCTTCATCCGCAAGCACCACCTAATGAAACACCAGCGCATC  
 CACACCGGGAGCGGCCCTACCCTGCTCTACTGTGGCAGGAGTTCGCTACAACAGACACTCAAGG  
 ACCACCTCCGTTCAAGCCACAATGGAGGCTGTGGGGGTGATAGTACCCATCAGGTCAGCCACCCAAACC  
 ACCAGGTCCTCATAACTGGGCTTGAACCTTCTGGCCTGGGTGTCAACTGAAGGTCTAGAGACCAAC  
 CAGTGGTATGGGAAGGGAGTGGAGGGGGAGTTTTG

ACGCGTACGCGGCCGCTCGAG - GFP Tag - GTTTAA

**Protein Sequence:**

>RG216016 representing NM\_170686  
 Red=Cloning site Green=Tags(s)

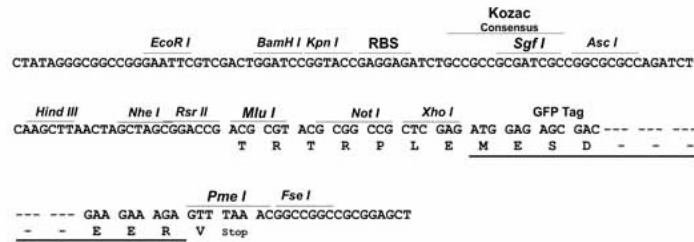
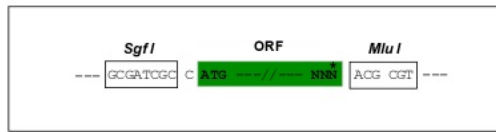
MAEAAPAPTSEWDSECLTSLQPLPLTPPPAANEHLQTAASLWTVVAAVQAIERKVEIHSRLLHLEGR  
 TGTAEKKLASCEKTVTELGNQLEGKWAVLGTLLQEYGLLQRRLENLENLLRNRNFWILRLPPGIKGDIPK  
 VPVAFDDVSIYFSTPEWEKLEEWQKELYKNIMKGNYESLISMDYAINQPDVLSQIQPEGEHNTEDQAGPE  
 ESEIPTDPSEEPGISTDILSWIKQEEEPQVGAPPESKESDVYKSTYADEELVIKAEGLARSSLCPPEVPV  
 PFSPPAAAKDAFSDVAFKSSQSTSMTPFGRPADLPEASEGQVTFQLGSYPLPPPVGQVFSCHHCGK  
 NLSQDMLLTHQCSHATEHPLPCAQCPKHFTPADLSSTSQDHASETPPTCPHCARTFTHPSRLTYHLRVH  
 NSTERPFPCPDCPKRFADQARLTSHRAHASERPFRAQCGRSFLKISLLLHQRGHAQERPFSCPCGI  
 DFNGHSALIRHQMIHTGERPYPCTDCSKSFMKHELLNHRRLHTGERPFSCPHCGKSFIRKHLMKHQRI  
 HTGERPYPYCSYGRSFRYKQTLKDHLSRSHNGGCGGSDSPSGQPPNPPGLITGLETSGLGVNTEGLETN  
 QWYGEKSGGGVL

TRTRPLE - GFP Tag - V

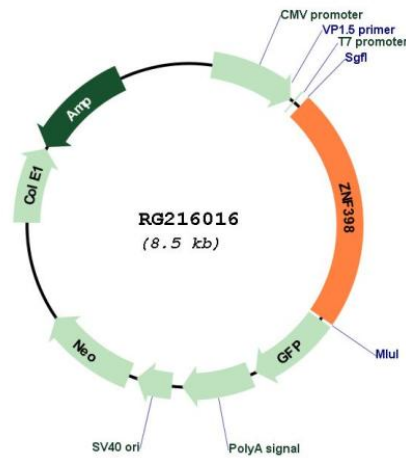
Restriction Sites: SgfI-MluI

Cloning Scheme:

Cloning sites used for ORF Shuttling:



Plasmid Map:



ACCN: NM\_170686

ORF Size: 1926 bp

<b>OTI Disclaimer:</b>	The molecular sequence of this clone aligns with the gene accession number as a point of reference only. However, individual transcript sequences of the same gene can differ through naturally occurring variations (e.g. polymorphisms), each with its own valid existence. This clone is substantially in agreement with the reference, but a complete review of all prevailing variants is recommended prior to use. <a href="#">More info</a>
<b>OTI Annotation:</b>	This clone was engineered to express the complete ORF with an expression tag. Expression varies depending on the nature of the gene.
<b>Components:</b>	The ORF clone is ion-exchange column purified and shipped in a 2D barcoded Matrix tube containing 10ug of transfection-ready, dried plasmid DNA (reconstitute with 100 ul of water).
<b>Reconstitution Method:</b>	<ol style="list-style-type: none"><li>1. Centrifuge at 5,000xg for 5min.</li><li>2. Carefully open the tube and add 100ul of sterile water to dissolve the DNA.</li><li>3. Close the tube and incubate for 10 minutes at room temperature.</li><li>4. Briefly vortex the tube and then do a quick spin (less than 5000xg) to concentrate the liquid at the bottom.</li><li>5. Store the suspended plasmid at -20°C. The DNA is stable for at least one year from date of shipping when stored at -20°C.</li></ol>
<b>RefSeq:</b>	<a href="#">NM_170686.3</a>
<b>RefSeq Size:</b>	5172 bp
<b>RefSeq ORF:</b>	1929 bp
<b>Locus ID:</b>	57541
<b>UniProt ID:</b>	<a href="#">Q8TD17</a>
<b>Cytogenetics:</b>	7q36.1
<b>Protein Families:</b>	Druggable Genome, Transcription Factors
<b>Gene Summary:</b>	This gene encodes a member of the Kruppel family of C2H2-type zinc-finger transcription factor proteins. The encoded protein acts as a transcriptional activator. Two transcript variants encoding distinct isoforms have been identified for this gene. Other transcript variants have been described, but their full length sequence has not been determined. [provided by RefSeq, Jul 2008]