

Product datasheet for **RG215999**

TACC2 (NM_006997) Human Tagged ORF Clone

Product data:

Product Type:	Expression Plasmids
Product Name:	TACC2 (NM_006997) Human Tagged ORF Clone
Tag:	TurboGFP
Symbol:	TACC2
Synonyms:	AZU-1; ECTACC
Mammalian Cell Selection:	Neomycin
Vector:	pCMV6-AC-GFP (PS100010)
E. coli Selection:	Ampicillin (100 ug/mL)
ORF Nucleotide Sequence:	>RG215999 representing NM_006997 Red=Cloning site Blue=ORF Green=Tags(s)

TTTTGTAATACGACTCACTATAGGGCGGCCGGAATTCGTCGACTGGATCCGGTACCGAGGAGATCTGCC
GCC**CGATCGCC**

ATGGGAGGGTCGCAGTCCCTGCAGCCAGCCCCAGCCAGCGACCTGAACCTGGAGGCTTCGAGGCAATGA
GTTCCGATTCTGAAGAGGCATTTGAGACCCCGAGTCAACGACCCTGTCAAAGCTCCGCCAGCTCCACC
CCCACCACCCCGAAGTCATCCAGAACCCGAGGTCAGCACACAGCCACCCCGGAAGAACCAGGATGT
GGTTCTGAGACAGTCCCTGTCCCTGATGGCCACGGAGCGACTCGGTGGAAGGAAGTCCCTCCGTCGCC
CGTCACACTCCTCTCTGCGCTTCGATGAAGACAAGCCGATAGCCAGCAGTGGGACTTACAATTGGA
CTTTGACAACATTGAGCTTGTGGATACCTTTCAGACCTTGGAGCCTCGTGCCTCAGACGCTAAGAATCAG
GAGGGCAAAGTGAACACACCGGAGGAAGTCCACGGATTCGGTCCCATCTCTAAGTCTACACTGTCCCGGT
CGCTCAGCCTGCAAGCCAGTGACTTTGATGGTGCTTCTCCTCAGGCAATCCCGAGGCCGTGGCCCTTGC
CCCAGATGCATATAGCACGGTTCCAGCAGTGCTTCTAGTACCCTTAAGCGAACTAAAAACCGAGGCCG
CCTTCTTAAAAAAGAAACAGACCACCAAGAAACCCACAGAGACCCCGAGTGAAGGAGACGCAACAGG
AGCCAGATGAAGAGAGCCTTGTCCCGAGTGGGGAGAATCTAGCATCTGAGACGAAAACGGAATCTGCCAA
GACGGAAGGTCTAGCCAGCCTTATTGGAGGAGACGCCCTTGGAGCCGCTGTGGGGCCCAAAGCTGCC
TGCCCTCTGGACTCAGAGAGTGCAGAAGGGTTGTCCCGGCTTCTGGAGGTGGCAGAGTGCAGAACT
CACCCCTGTCCGGAGGAAAACGCTGCCTTACCACGGCCCGAGGCAGGGGAGGTAACCCCATCGGA
TAGCGGGGGCAAGAGGACTCTCCAGCCAAAGGCTCTCCGTAAGGCTGGAGTTTACTATTCTGAGGAC
AAGAGTAGTTGGGACAACCAGCAGGAAAACCCCTCCTACCAAAAAGATAGGCAAAAAGCCAGTTGCCA
AAATGCCCTGAGGAGGCCAAAGATGAAAAGACACCCGAGAACTTGACAACACTCCTGCCTCACCTCC
CAGATCCCTGCTGAACCAATGACATCCCATTTGCTAAAGTACTTACACCTTTGATATTGACAAGTGG
GATGACCCCAATTTAAACCCTTTTCTCCACCTCAAAAATGCAGGAGTCTCCAAACTGCCCAACAAT
CATACAACCTTGGCCAGACACCTGTGATGAGTCCGTTGACCCCTTAAGACATCCTAAGACCCCGAG
CTCACCTCTAAATCCCGAGCCTCCTTTGAGATCCAGCCAGTGCTATGGAAGCCAATGGAGTGGACGGG



GATGGGCTAAACAAGCCCGCCAAGAAGAAGAAGACGCCCTAAAGACTGACACATTTAGGGTGAAAAAGT
 CGCCAAAACGGTCTCCTCTCTGATCCACCTCCAGGACCCACCCAGCTGTACACCAGAAACACC
 ACCAGTGATCTCTGCGGTGGTCCACGCCACAGATGAGGAAAAGCTGGCGGTACCAACCAGAAAGTGGACG
 TGCATGACAGTGGACCTAGAGGCTGACAAAAGGACTACCCGACGCCCTCGGACCTGTCCACCTTTGTAA
 ACGAGACCAAATTCAGTTCACCCACTGAGGAGTTGGATTACAGAACTCCTATGAAATGAATATATGGA
 GAAAATTTGGCTCCTCCTTACCTCAGGACGACGATGCCCGAAGAAGCAGGCCCTGTACCTTATGTTTGAC
 ACTTCTCAGGAGGCCCTGTCAAGTCATCTCCCGTCCGCATGTCAGAGTCCCGACGCCGTGTTCCAGGGT
 CAAGTTTTGAAGAGACTGAAGCCCTTGTGAACACTGCTGCGAAAAACCAGCATCCTGTCCCACGAGGACT
 GGCCCTAACCAAGAGTCACACTTGCAGGTGCCAGAGAAATCCTCCAGAAAGGAGCTGGAGGCCATGGGC
 TTGGGCACCCCTTCAAGAGCGATTGAAATTACAGCTCCCGAGGGCTCCTTTGCCTCTGCTGACGCCCTCC
 TCAGCAGGCTAGCTACCCCGTCTCTCTGTGGTGCCTTACTATCTGGAGCCCGACTTAGCAGAAAA
 GAACCCCCACTATTGCTCAGAACTCCAGGAGGAGTTAGAGTTTGCATCATGCGGATAGAAGCCCTG
 AAGCTGGCCAGGCAGATTGCTTTGGCTCCCGCAGCCACCAGGATGCCAAGAGAGAGGCTGCTACCCAA
 CAGACGTCTCCATCTCCAAAACAGCCTGTACTCCGCATCGGGACCGCTGAGGTGGAGAAACCTGCAGG
 CCTTCTGTTCCAGCAGCCGACCTGGACTCTGCCCTCCAGATCGCCAGAGCAGAGATCATAACCAAGGAG
 AGAGAGGTCTCAGAATGGAAGATAAATATGAAGAAAGCAGGCGGAAGTGATGGAATGAGGAAAATAG
 TGGCCGAGTATGAGAAGACCATCGCTCAGATGATAGAGGACGAACAGAGAGAGAAGTCAGTCTCCACCA
 GACGGTGCAGCAGCTGGTCTGGAGAAGGAGCAAGCCCTGGCCGACCTGAACTCCGTGGAGAAGTCTCTG
 GCCGACCTCTTCAAGAATATGAGAAGATGAAGGAGGTCTAGAAGGCTTCCGCAAGAATGAAGAGGTGT
 TGAAGAGATGTGCGCAGGAGTACCTGTCCCGGTGAAGAAGGAGGAGCAGAGGTACCAGGCCCTGAAGGT
 GCACGCGGAGGAGAACTGGACAGGGCCAATGCTGAGATTGCTCAGGTTGAGGCAAGGCCACGACAGGAG
 CAAGCCGCCACCAGGCCAGCCTGCGGAAGGAGCAGCTGCGAGTGGACGCCCTGGAAGGACGCTGGAGC
 AGAAGAATAAAGAATAAGAAGAACTACCAAGATTTGTGACGAACTGATTGCCAAAATGGGGAAAAGC

ACGCGTACGCGGCCGCTCGAG - GFP Tag - GTTTAA

Protein Sequence:

>RG215999 representing NM_006997
 Red=Cloning site Green=Tags(s)

MGGSQSLQPAPASDLNLEASDSEEFETPESTTPVKAPPAPPPPPPEVIPEPEVSTQPPPEEPGC
 GSETVPPVDPGRSDSVEGSPFRPPSHFSAVFDEDKPIASSGTYNLDNFNIELVDTFQTLPRASDAKNQ
 EGKVNTRRKSTDSVPIISKSTLSRSLSLQASDFGASSGNPEAVALAPDAYSTGSSSASSTLKRTRKPRP
 PSLKKKQTTTKPTETPPVKETQQEPDEESLVPSENLASETKTESAKTEGSPALLEETPLEPAVGPKAA
 CPLDSESAEGVPPASGGGRVQNSPPVGRKTLPLTTAPEAGEVTPSDSGGQEDSPAKGLSVRLEFDYSED
 KSSWDNQENPPPTKKIGKKPVAKMPLRRPKMKKTPEKLDNTPASPPRSPAEPNDIPIAKGTYTFDIDKW
 DDPNFPNFSSTSKMQESPPLPQQSYNFDPDTCDESVDPFKTSSKTPSSPSKSPASFEIPASAMEANGVDG
 DGLNPKAKKKKTKPLKTDTRVKKSPKRSPLSDPPSQDPTPAATPETPPVI SAVVHATDEEKLAVTNQKWT
 CMTVDLEADKQDYPQPSDLSTFVNETKFSPTTEELDYRNSYEIEYMEKIGSSLPQDDAPKKQALYLMFD
 TSQESPVKSSPVRMSESPTPCSGSSFEETEALVNTAAKNQHPVPRGLAPNQE SHLQVPEKSSQKELEAMG
 LGTPSEAITETAPEGSFASADALLSRLAHPVSLCGALDYLPDLAEKNPPLFAQKLQEELEFAIMRIEAL
 KLARQIALASRSHQDAKREAAHPTDVSISKALYSRIGTAEVEKPAGLLFQQPDLDSALQIARAEIITKE
 REVSEWKDYEESRREVMEMRKIVAEYEKTI AQMIEDEQREKSVSHQTVQQLVLEKEQALADLNSVEKSL
 ADLFRRYEKMKEVLEGFRKNEEVLKRCAQEYLSRVKKEEQRYQALKVHAEKLDLANAEIAQVRGKAQQE
 QAAHQASLRKEQLRVDALERTLEQKNKEIEELTKICDELIAKMGKS

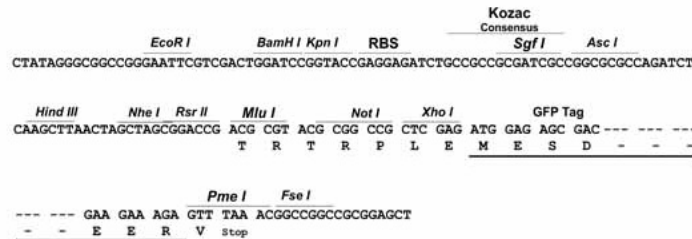
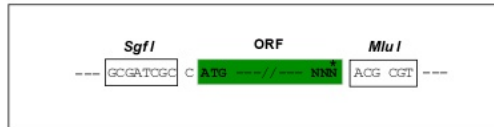
TRTRPLE - GFP Tag - V

Restriction Sites:

Sgfl-MluI

Cloning Scheme:

Cloning sites used for ORF Shutting:


ACCN: NM_006997

ORF Size: 3078 bp

OTI Disclaimer: The molecular sequence of this clone aligns with the gene accession number as a point of reference only. However, individual transcript sequences of the same gene can differ through naturally occurring variations (e.g. polymorphisms), each with its own valid existence. This clone is substantially in agreement with the reference, but a complete review of all prevailing variants is recommended prior to use. [More info](#)
OTI Annotation: This clone was engineered to express the complete ORF with an expression tag. Expression varies depending on the nature of the gene.

Components: The ORF clone is ion-exchange column purified and shipped in a 2D barcoded Matrix tube containing 10ug of transfection-ready, dried plasmid DNA (reconstitute with 100 ul of water).

Reconstitution Method:

1. Centrifuge at 5,000xg for 5min.
2. Carefully open the tube and add 100ul of sterile water to dissolve the DNA.
3. Close the tube and incubate for 10 minutes at room temperature.
4. Briefly vortex the tube and then do a quick spin (less than 5000xg) to concentrate the liquid at the bottom.
5. Store the suspended plasmid at -20°C. The DNA is stable for at least one year from date of shipping when stored at -20°C.

RefSeq: [NM_006997.4](#)
RefSeq Size: 3916 bp

RefSeq ORF: 3081 bp

Locus ID: 10579

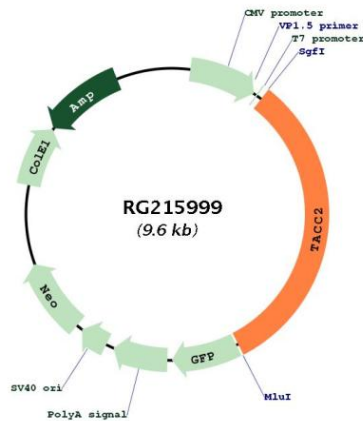
UniProt ID: [O95359](#)

Cytogenetics: 10q26.13

Domains: TACC

Gene Summary: Transforming acidic coiled-coil proteins are a conserved family of centrosome- and microtubule-interacting proteins that are implicated in cancer. This gene encodes a protein that concentrates at centrosomes throughout the cell cycle. This gene lies within a chromosomal region associated with tumorigenesis. Expression of this gene is induced by erythropoietin and is thought to affect the progression of breast tumors. Several transcript variants encoding different isoforms have been found for this gene. [provided by RefSeq, Jul 2008]

Product images:



Circular map for RG215999