

Product datasheet for **RG215996**

MAG (NM_080600) Human Tagged ORF Clone

Product data:

Product Type:	Expression Plasmids
Product Name:	MAG (NM_080600) Human Tagged ORF Clone
Tag:	TurboGFP
Symbol:	MAG
Synonyms:	GMA; S-MAG; SIGLEC-4A; SIGLEC4A; SPG75
Mammalian Cell Selection:	Neomycin
Vector:	pCMV6-AC-GFP (PS100010)
E. coli Selection:	Ampicillin (100 ug/mL)



[View online »](#)

ORF Nucleotide Sequence:

>RG215996 representing NM_080600
 Red=Cloning site Blue=ORF Green=Tags(s)

TTTTGTAATACGACTCACTATAGGGCGGCCGGAATTCGTCGACTGGATCCGGTACCGAGGAGATCTGCC
 GCC**CGGATCGCC**

ATGATATTCTCACGGCACTGCCTCTGTTCTGGATTATGATTTACGCCTCCCGAGGGGGTACTGGGGT
 CCTGGATGCCCTCGTCCATCTCGGCCTCGAAGGCACGTGCGTCTCCATCCCCTGCCGCTTTGACTTCCC
 GGATGAGCTGCGGCCCGCTGTGGTGCATGGTGTCTGGTACTTCAATAGCCCTACCCCAAGAACTACCCC
 CCGGTGGTCTTCAAGTCGCGCACCCAAGTAGTCCACGAGAGCTTCCAGGGCCGACGCCGCTCTGGGGG
 ACCTGGGCTGCGAAACTGCACCCTCTGCTCAGCAACGTGAGCCCGAGCTGGGCGGGAAGTACTACTT
 CCGTGGGACCTGGGCGGCTACAACCAGTACACCTTCTCAGAGCACAGCGTCTGGATATCGTCAACACC
 CCCAACATCGTGGTGCCCCAGAGGTGGTGGCAGGCAGGAGGTGGAGGTGAGTGCATGGTGCCGGACA
 ACTGCCAGAGCTGCGCCCTGAGCTGAGCTGGCTGGGCCACGAGGGGCTGGGGAGCCCGCTGTGCTGGG
 CCGGCTGCGGGAGGACGAGGGCACCTGGGTGCAGGTGTCAGTCTGCCTCGTCCACGAGGGAGGCC
 AACGGCCACAGGCTGGGCTGCCAGGCCTCTTCCCAACACCACCTGCAGTTCCGAGGGTACGCCAGCA
 TGGACGTCAGTACCCCCGGTATTGTGGAGATGAACTCCTCGTGGAGGCCATCGAGGGCTCCCACGT
 GAGCCTGCTCTGTGGGCTGACAGCAACCCCCGCGCTGCTGACCTGGATGCGGGACGGGACAGTCCCTC
 CGGGAGGCGGTGGCCGAGAGCCTGCTCCTGGAGCTGGAGGAGGTGACCCCGCCGAAGACGGCGTATG
 CCTGCCTGGCCGAGAATGCCTATGGCCAGGACAACCGCACCGTGGGGCTCAGTGTATGTATGCACCCTG
 GAAGCCAAAGTGAACGGGACAATGGTGGCCGTAGAGGGGAGACGGTCTCTATCTTGTCTCCACACAG
 AGCAACCCGGACCCTATTCTCACCATCTCAAGGAGAAGCAGATCCTGTCCACGGTATCTACGAGAGCG
 AGCTGCAGCTGGAGCTGCCGGCCGTGCACCCGAGGATGATGGAGAGTACTGGTGTGGTGGTGGAGAAC
 GTATGGCCAGAGGGCCACCGCCTTCAACCTGTCTGTGGAGTTCGCCCCTGTGCTCCTCCTGGAGTCCCAC
 TGCAGCGGAGCCGAGACACGGTGCAGTGCCTGTGCGTGGTGAAGTCCAACCCGAGCCGTCCTGGGCT
 TTGAGCTGCCATCGCGCAATGTGACCGTGAACGAGAGCGAGCGGGAGTTCGTGTACTCGGAGCGCAGCGG
 CCTCGTCTCACCAGCATCCTCAGCTGCGGGGGCAGGCCAGGCCCGCCCGCGTCTATGCACCGGG
 AGGAACCTCTATGGCGCAAGAGCCTGGAGCTGCCCTTCCAGGGAGCCCATCGACTGATGTGGGCAAGA
 TCGGGCTGTGGGCGCCGTGGTGCCTTTGCCATCCTGATTGCCATCGTCTGCTACATTACCAGACAGC
 CAGGAAAAAGAACGTGACAGAGAGCCCCAGCTTCTCGGCAGGGGACAACCCTCCCGTCTGTTCAGCAGC
 GACTTCCGCATCTCTGGGCACAGAGAAGTACGAGTCCAAGAGGTTTCTACCTGGAATCTCAC

ACGCGTACGCGGCCGCTCGAG – GFP Tag – GTTTAA

Protein Sequence:

>RG215996 representing NM_080600
 Red=Cloning site Green=Tags(s)

MIFLTALPLFWIMISASRGGHWGAWMPSSISAFEGTCVSIPCRFDPELPAVVHGVVYFNSPYKKNYP
 PVVFKSRTQVVHESFQGRSRLLDGLRNCTLLLSNVSPELGGKYYFRGDLGGYNQYTFSEHSVLDIVNT
 PNIVVPEVVAGTEVEVSCMVPDNCPELRPELSWLGHEGLGEPAVLGRLEDEGTWVQVSLHLHFVPTREA
 NGHRLGCQASFPNTTLQFEGYASMDVKYPPVIVEMNSSVEAIEGSHVSLLCGADSNPPPLLTWMRDGTVL
 REAVAESLLEEEVTPAEDGVYACLAENAYQDNRTVGLSVMYAPWKPTVNGTMVAVEGETVSILCSTQ
 SNPDPIITIFKEKQILSTVIYESELQLELPAVSPEDDGEYWCVAENQYQQRATAFNLSVEFAPVLLLESH
 CAAARDTVQCLCVVKSNPESVAFELPSRNVTVNESEREFVYSERSGLVLTSLTLRQQAQAPPRVICTA
 RNLYGAKSLELFPQGAHRLMWAIGPVGAVVAFAILIAIVCYITQTRRKNVTESPFSAGDNPPVLFSS
 DFRISGAPEKYESKEVSTLSEH

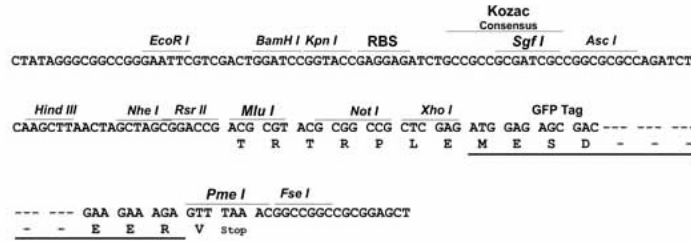
TRTRPLE – GFP Tag – V

Restriction Sites:

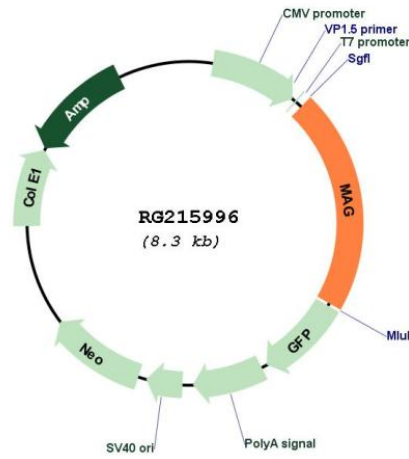
Sgfl-MluI

Cloning Scheme:

Cloning sites used for ORF Shutting:



Plasmid Map:



ACCN: NM_080600
 ORF Size: 1746 bp

OTI Disclaimer:	<p>Due to the inherent nature of this plasmid, standard methods to replicate additional amounts of DNA in E. coli are highly likely to result in mutations and/or rearrangements. Therefore, OriGene does not guarantee the capability to replicate this plasmid DNA. Additional amounts of DNA can be purchased from OriGene with batch-specific, full-sequence verification at a reduced cost. Please contact our customer care team at custsupport@origene.com or by calling 301.340.3188 option 3 for pricing and delivery.</p> <p>The molecular sequence of this clone aligns with the gene accession number as a point of reference only. However, individual transcript sequences of the same gene can differ through naturally occurring variations (e.g. polymorphisms), each with its own valid existence. This clone is substantially in agreement with the reference, but a complete review of all prevailing variants is recommended prior to use. More info</p>
OTI Annotation:	<p>This clone was engineered to express the complete ORF with an expression tag. Expression varies depending on the nature of the gene.</p>
Components:	<p>The ORF clone is ion-exchange column purified and shipped in a 2D barcoded Matrix tube containing 10ug of transfection-ready, dried plasmid DNA (reconstitute with 100 ul of water).</p>
Reconstitution Method:	<ol style="list-style-type: none">1. Centrifuge at 5,000xg for 5min.2. Carefully open the tube and add 100ul of sterile water to dissolve the DNA.3. Close the tube and incubate for 10 minutes at room temperature.4. Briefly vortex the tube and then do a quick spin (less than 5000xg) to concentrate the liquid at the bottom.5. Store the suspended plasmid at -20°C. The DNA is stable for at least one year from date of shipping when stored at -20°C.
RefSeq:	<p>NM_080600.2, NP_542167.1</p>
RefSeq Size:	<p>2503 bp</p>
RefSeq ORF:	<p>1749 bp</p>
Locus ID:	<p>4099</p>
UniProt ID:	<p>P20916</p>
Cytogenetics:	<p>19q13.12</p>
Domains:	<p>ig, IGc2, IG</p>
Protein Families:	<p>Druggable Genome, Transmembrane</p>
Protein Pathways:	<p>Cell adhesion molecules (CAMs)</p>
Gene Summary:	<p>The protein encoded by this gene is a type I membrane protein and member of the immunoglobulin superfamily. It is thought to be involved in the process of myelination. It is a lectin that binds to sialylated glycoconjugates and mediates certain myelin-neuron cell-cell interactions. Three alternatively spliced transcripts encoding different isoforms have been described for this gene. [provided by RefSeq, Nov 2010]</p>