

Product datasheet for **RG215990**

GSTA5 (NM_153699) Human Tagged ORF Clone

Product data:

Product Type: Expression Plasmids
Product Name: GSTA5 (NM_153699) Human Tagged ORF Clone
Tag: TurboGFP
Symbol: GSTA5
Mammalian Cell Selection: Neomycin
Vector: pCMV6-AC-GFP (PS100010)
E. coli Selection: Ampicillin (100 ug/mL)
ORF Nucleotide Sequence: >RG215990 representing NM_153699
 Red=Cloning site Blue=ORF Green=Tags(s)

TTTTGTAATACGACTCACTATAGGGCGGCCGGAATTCGTCGACTGGATCCGGTACCGAGGAGATCTGCC
 GCC**CGATCGCC**

ATGGCAGAGAAGCCCAAGCTCCACTACTCCAATGCACGGGGCAGTATGGAGTCCATTCGGTGGCTCCTGG
 CTGCAGCTGGAGTAGAGTTGGAAGAGAAATTTCTAGAATCTGCAGAAGATTTGGACAAGTTAAGAAATGA
 TGGGAGTTTGCTGTTCCAGCAAGTACCAATGGTTGAGATTGACCGGATGAAGCTGGTGCAGACCAGAGCC
 ATCTTAACTACATTGCCAGCAAATACAACCTTTATGGGAAAGACATGAAGGAGAGAGCCCTGATTGATA
 TGTACACAGAAGGTATAGTATTTGACTGAAATGATCCTTCTTCTGCTCATATGTCAACCAGAGGAAAG
 AGATGCCAAGACTGCCTTGGTCAAAGAGAAAATAAAAAATCGCTACTTCCCTGCCTTTGAAAAAGTCTTA
 AAGAGCCACAGACAAGACTACCTTGTGGCAACAAGCTGAGCTGGGCTGACATTCACCTGGTGGAACTTT
 TCTACTACGTGGAAGAGCTTGAAGCTTCTCCAGCTTCCCTCTGCTGAAGGCCCTGAAAACCGAG
 AATCAGCAACCTGCCACGGTGAAGAAGTTTCTGCAGCCTGGCAGCCAGAGAAAGCCTCCCATGGATGAG
 AAATCTTTAGAAGAAGCAAGGAAGATTTTCAGGTTT

ACGCGTACGCGGCCGCTCGAG - GFP Tag - GTTTAA

Protein Sequence: >RG215990 representing NM_153699
 Red=Cloning site Green=Tags(s)

MAEKPKLHYSNARGSMESIRWLLAAAGVELEEKFLESAEDLDKLRNDGSLLFQQVPMVEIDGMKLVQTRA
 ILNYIASKYNLYGKDMKERALIDMYTEGIVDLTEMILLLLICQPEERDAKTALVKEKIKNRYFPAFEKVL
 KSHRQDYL VGNKLSWADIHLVELFYYVEELDSSLISSFPLLKALKTRISNLPTVKKFLQPGSQRKPPMDE
 KSLEEARKIFRF

TRTRPLE - GFP Tag - V

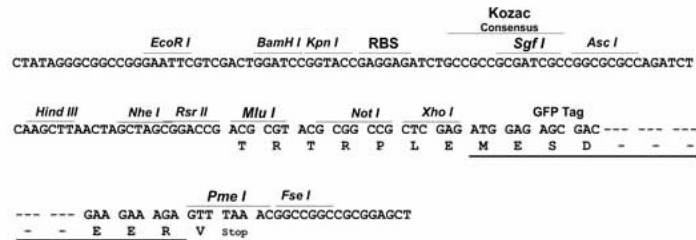
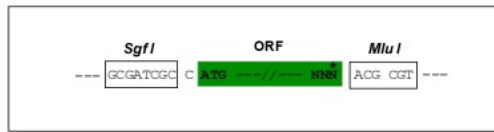


[View online »](#)

Restriction Sites: SgfI-MluI

Cloning Scheme:

Cloning sites used for ORF Shutting:



ACCN: NM_153699

ORF Size: 666 bp

OTI Disclaimer: The molecular sequence of this clone aligns with the gene accession number as a point of reference only. However, individual transcript sequences of the same gene can differ through naturally occurring variations (e.g. polymorphisms), each with its own valid existence. This clone is substantially in agreement with the reference, but a complete review of all prevailing variants is recommended prior to use. [More info](#)

OTI Annotation: This clone was engineered to express the complete ORF with an expression tag. Expression varies depending on the nature of the gene.

Components: The ORF clone is ion-exchange column purified and shipped in a 2D barcoded Matrix tube containing 10ug of transfection-ready, dried plasmid DNA (reconstitute with 100 ul of water).

- Reconstitution Method:**
1. Centrifuge at 5,000xg for 5min.
 2. Carefully open the tube and add 100ul of sterile water to dissolve the DNA.
 3. Close the tube and incubate for 10 minutes at room temperature.
 4. Briefly vortex the tube and then do a quick spin (less than 5000xg) to concentrate the liquid at the bottom.
 5. Store the suspended plasmid at -20°C. The DNA is stable for at least one year from date of shipping when stored at -20°C.

RefSeq: [NM_153699.1](#), [NP_714543.1](#)

RefSeq Size: 845 bp

RefSeq ORF: 669 bp

Locus ID: 221357

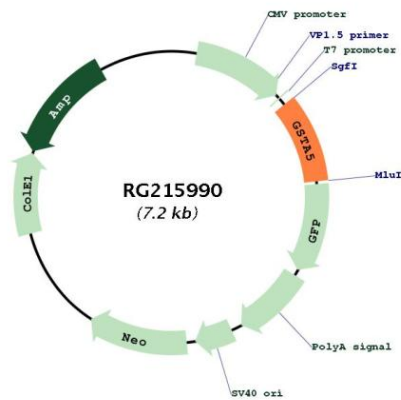
UniProt ID: [Q7RTV2](#)

Cytogenetics: 6p12.2

Protein Pathways: Drug metabolism - cytochrome P450, Glutathione metabolism, Metabolism of xenobiotics by cytochrome P450

Gene Summary: The glutathione S-transferases (GST; EC 2.5.1.18) catalyze the conjugation of reduced glutathiones and a variety of electrophiles, including many known carcinogens and mutagens. The cytosolic GSTs belong to a large superfamily, with members located on different chromosomes. For additional information on GSTs, see GSTA1 (MIM 138359).[supplied by OMIM, Sep 2008]

Product images:



Circular map for RG215990