

## Product datasheet for **RG215958**

### SPHKAP (NM\_030623) Human Tagged ORF Clone

#### Product data:

Product Type:	Expression Plasmids
Product Name:	SPHKAP (NM_030623) Human Tagged ORF Clone
Tag:	TurboGFP
Symbol:	SPHKAP
Synonyms:	SKIP
Mammalian Cell Selection:	Neomycin
Vector:	pCMV6-AC-GFP (PS100010)
E. coli Selection:	Ampicillin (100 ug/mL)
ORF Nucleotide Sequence:	>RG215958 representing NM_030623 Red=Cloning site Blue=ORF Green=Tags(s)

TTTTGTAATACGACTCACTATAGGGCGGCCGGAATTCGTCGACTGGATCCGGTACCGAGGAGATCTGCC  
GCC**CGATCGCC**

ATGGATGGCAACTCCCTGCTCTCGGTACCAAGCAACTTGGAGTCATCACGGATGTATGACGTTTTGGAAC  
CGCAGCAGGGCAGAGGCTGTGGCAGCTCAGGAAGCGGCCCGGGAACCCATCACAGCCTGTAAGAAGGT  
TCTTCGCAGCAATAGCCTGCTGGAGTCAACAGACTACTGGTTGCAGAATCAGAGGATGCCCTGCCAAATT  
GGTTTTGTAGAAGACAAGTCTGAAAACGTGCTTCTGTCTGCTTTGTGAATCTTGGTGTGAACAAGGATG  
AATGCAGCACAGAGCACCTGCAACAGAACTGGTCAACGTTTCACCAGATCTTCCAAAACCTATCAGTTC  
CATGAATGTCCAACAACCAAGAAAATGAAATGTTGTCTTAAGTGGGTAGCCTCTGGAAATCTCCAG  
GCAGATTTTGAAGTTTCAGAGTCCCTTGCTGCCAGATATCTGCTTGGTCCAATGTGCAAGAGGGAACA  
GACCAACAGTACCAACTGCATCATCTTTGAAATCAACAAATTTCTGATTGGTCTGGAACCTGGTGCAGGA  
GCGACAGCTCCACCTGGAACAAACATCTTGAACCTGGAGGATGACACGAACTGTTCTTATCTTCAATC  
GAGGAAGACTTTCTACCGCTTCTGAGCACTTGGAGGAGGAAAGCGAGGTGGATGAATCTAGGAACGATT  
ATGAAAATATAAATGTCTCAGCCAATGTTTTGAAAAGTAAACAGCTAAAGGGAGCCACCCAGGTGGAATG  
GAATTGCAACAAGGAAAAGTGGCTTTATGCTTTGGAAGACAAATACATCAACAAATATCCACACCCATTG  
ATTAACAACAGAACGATCTCCAGAAAACCTAACAAAGAACACAGCCTTGACAGAGTCTAGATCCCTCAGCCA  
AGCCATCACAGTGGAAAAGAGAAGCTGTGGGGAATGGGAGACAAGCCACACATTATTATCATTAGAAAGC  
TTTTAAAGGTCAAATGGAATAATCACAGGCACTGTATATTCCAAAAGATGCTTATTTCTCCATGATGGAT  
AAAGATGTACCTTCTGCATGTGCTGTGGCAGAGCAGAGAAGCAACCTAAACCCAGGAGACCATGAAGACA  
CAAGAAACGCTCTCCCTCCTAGACAAGATGGAGAAGTCAACACTGGCAAGTATGCTACAAATTTAGCAGA  
ATCCGTGCTGCAGGATGCATTTATTAGATTATCTCAATCTCAGTCCACATTACCCAGGAATCTGCAGTC  
AGTGTCTGTAGGAAGTCTCTGCTTCCCAGTTGCTATTCCACAAAAGATACAGTGGTTTCTCGGTCAT  
GGAATGAGCTCCCAAAATCGTCGTTGTTTCAGAGTCCAGATGGCAGTGATGCTGCCCCACAGCCAGGCAT  
CTCCTCCTGGCCTGAGATGGAAGTCTCTGTTGAAACCTCAAGCATCCCCTCTGGAGAGAACTCCAGCAGA



CAACCCAGAGTCTAGAAAGTGGCGTTAGCTTGTGCAGCCACTGTGATTGGAACATTTCCAGTCCAC  
 AGGCCACAGAAAGACTCAAAATGGAGCAAGTGGTCTCGAACTTTCCCCAGGGAGCAGTGGTGCAGTGC  
 AACTCAAGCACCCCAAGGACTCAAGGAACCTTCCATCAATGAGTACTCCTTTCCATCTGCTTTGTGTGGC  
 ATGACTCAGGTGGCCAGTGCCGTGGTGTCTGTGGTCTGGGTGAAAGAGAAGAGGTGACATGCTCAGTGG  
 CTCCAAGTGGTAGCCTCCCGCTGCAGCTGAGGCTTCTGAAGCCATGCCCCACTTTGTGGTTTAGCAAG  
 CATGGAGCTTGGCAAGGAAGCCATTGCCAAGGGATTGCTCAAGGAGGCTGCTCTGGTTTTAAACAAGCCCT  
 AATACCTACAGCAGCATTGGAGACTTTCTGGACTCCATGAACAGGAGAATCATGGAAACTGCTTCAAAGT  
 CTCAGACCCTGTGCTCAGAAAATGTCGTAGGAATGAACGGCACATACCCTGTCCAATGTTATCCTGAG  
 GCATTCCATTGATGAAGTTCACCAAAAAATATGATAATCGACCCCAATGACAACAGGCATTTCATCTGAA  
 ATTCTGGACACCTTAATGGAAAGTACAAAACAACCTGCTTTTAGATGTGATATGCTTCACGTTCAAGAAGA  
 TGAGTCATATTGTACGGCTTGGTGAATGTCCTGCTGCTTTCTAAGGAGACCATCAGAAGGAGGGAGAC  
 AGAACCAAGTGCAGCCATCTGATCCGGGTGCTAGTCAAGCTTGGACAAAAGCCACTGAATCCTCCAGC  
 AGCTCTCCACTTAGCAATTCACACAACACGAGTCTTGTCAACAATCTTGTGGATGGCATGTATTCAA  
 AACAAAGACAAGGGTGGAGTGAGGCCAGGCTCTTCAAGAACCCACGCTGCAGTACAATATACAGTAG  
 TCACAGAGTGCCCGATTCTTCAACTGCTACAACATCCTCAAGGAAATATATCTGAAAGGAATAGCAGGA  
 GAGGATACAAAAAGCCCTCATCAGAGTGAAGTGAATGCAGAGCCTCTCCGAAGGACAAAAGTCCCCAA  
 CGGTGAGCCAGTCCAGAAGTGGTCCCAGGAGGCTGAGGAGAGTATCCACCCAAACCCAAAGAAAAGTA  
 CAACTGTGCCACATCTCGCATCAACGAAGTTCAAGTCAACCTGTCTTGTAGGGGATGACCTGTGCTT  
 CCTGCTCAATCCACGCTTCAAACAAAGCATCCAGACATCTACTGCATTACAGACTTTGCGGAAGAATTAG  
 CAGACACGGTCTGCTCCATGGCAACTGAAATGTCAGCGATTTGCCTTGACAACTCCAGTGGAAAACAACC  
 CTGGTTTTGTGCATGGAAAAGAGGGAGTGAGTTTCTGTAGACACCAACGTACCTGCGGATCCTTGAAG  
 AGGAAGAAGAGAGCCAGGGGAGCGGGACCGCTGTGAGGAAACAAGCCCTCCCGGCTCAGTGAATGAA  
 AGAAGACAGGACGACACCCCTGAGCTTAAAGAAAAGCTGATGAACAGGGTTGTGGATGAGTCCATGAA  
 CCTTGAAGATGTCCAGATTCTGTCAATCTTTTGGCAATGAAGTGGCAGCCAAGATCATGAACCTAACG  
 GAGTTCTCTATGGTGGACGGCATGTGGCAGGCGCAGGGCTATCCCGGAATCGGTTACTGAGTGGCGACA  
 GGTGGAGCCGGCTGAAGGCCTCCAGCTGCGAAAGCATTCTGAGGAAGACTCCGAGGCCAGGGCCTATGT  
 CAACAGCCTGGGCTTAATGAGCACGCTGAGCCAGCCGGTCCAGCAGGGCCAGCTCTGTCTCAAGCAGTGC  
 AGCTGTGAGAGCATCACCGATGAGTTTTCCAGGTTTATGGTGAACCAGATGGAAAATGAAGGGAGAGGAT  
 TTGAGTTACTGCTGGATTACTATGCTGGCAAGAAGCCAGCAGCATTCTGAACTCAGCCATGCAACAGGC  
 GTGCCGAAAAGTGACCACCTCAGTGTGAGGCCTAGCTGTCCCTAAGCAGTCCAGCACAGAGAGCATC  
 ACTGAGGAGTTCTACAGGTACATGCTGAGGGACATCGAAAAGAGACAGCAGAGAAAAGTGCCTCCTCCAGC  
 GGAGCAGCCAGATTTGGACAGCCGGCCTGCTGTCTCCTTCTGCGATCCCAAGTGTGCCACAGACAGTC  
 GTCCATGCCAGACAGCAGATCCCATGTCTCAGGCTGACAGTGAATGTGCCCATCAAAGCCAACTCTTTA  
 GATGGCTTTGCTCAGAACTGCCCACAAGATTTCTAAGCGTGCAGCCGGTCCAGTGCAGCGCTCCTCATCCG  
 GTCTCTGCAAACTGACTCTTGTGTATCGGAGAGGTGGGACTGACCACATCACCAACATGTTAATTCA  
 TGAAACGTGGGCTAGCTCCATTGAGGCTCTCATGCGCAAGAACAATAATTGTGGATGATGCAGAGGAA  
 GCTGACTGAGCCTGTTTCTGGTGGCTCTCCCTCGAAGCAGAGAAGTGTGCAATAGATTAGCTGCGA  
 GCAGGATGTGCAGTGGGCCAACTCTGCTTGTTCAGGAGTCTCTGATTGCCCGAGGAAAGACTCTGTTAC  
 CGAATGTAACAGCCCCCAGTGCATCTTTGAGCAAAACTGCTTCTTACAACCACAGCCCTTTAGAT  
 TCTAAAAAAGAACTTCCCTCGTGCCAGGACCCTGTACCAATAAACCCACAAAAGGGGATCACTTTGCTCGA  
 GGGAAAGTGCCTTTGATTAGATTGAAACAGATCAGAGAGAAGCCTGTGCTGGGGAACCTGAACCCTTCT  
 TTCCAAAAGCAGCCTCCTAGAGGAAGCAGAAGGGCATTGCAATGACAAAAACATCCAGATGTGGTGA  
 GGTGGAGACACAGCCGTGAGCGTTGTCAAATCCATAGTACAGCCTTGATACCAGAGATGTACCAGAGG  
 CTGAAGCCTCCACAGAAGCCAGAGCCCCGATGAGGCCCCCAACCCTCCAAGCAGCAGCGAGGAGAGCAC  
 AGGCAGCTGGACCAGCTTGCCAATGAGGAAGACAACCCAGATGACACAAGTAGCTTTCTCCAGCTCAGT  
 GAGCGATCCATGAGTGAATTAGTAGAAGAAAAGAAGATTCTTAAGGACAGTCAGAAAGCACAGAGGCAC  
 CTGCATCTGGACCGCTACGGGAACAGCCAGCCCCAGAGGAGCCTGCTGGTGTCAACTTTGACCTGGA  
 GCCAGAGTGTCCAGATGCCGAGCTCCGAGCCACTCTGCAGTGGATAGCTGCCTCTGAACTGGGGATTCCC  
 ACCATCTACTTTAAGAAATCTCAGGAAAACAGAATTGAAAAGTTTCTAGATGTCTGTCAGCTGGTTCATC  
 GGAAGTCTGAAAGTGGGTGATATCTTCCATGCAAGTGTCCAGTACTGCAAAATGCATGAGGAGCAGAA  
 GGATGGGAGACTGAGTCTTTTACTGCTTGGAACTGGGA

ACGCGTACGCGGCCGCTCGAG - GFP Tag - GTTTAA

**Protein Sequence:**

>RG215958 representing NM\_030623  
 Red=Cloning site Green=Tags(s)

MDGNSLLSVPSNLESSRMYDVLEPQQGRGCGSSGSGPGNSITACKKVLRSNSLLESTDYWLQNQRMPQCII  
 GFVEDKSENCASVCFVNLGVNKDECSTEHLQQKLVNVSPDLPKLISSMNVQPKENEIVVLSGLASGNLQ  
 ADFEVSQCPWLPDICLVQCARGNRPNSTNCIIFEINKFLIGLELVQERQLHLETNLIKLEDDTNCSSSI  
 EEDFLTASEHLEEESEVDES RNDYENINVSANVLESKQLKQATQVEWNCNKEKWL YALEDKYINKYPTPL  
 IKTERSPENLTKNTALQSLDPSAKPSQWKREAVGNRQATHYYHSEAFKGMQEKSQALYIPKDAYFSMMD  
 KDVPACAVAEQRSNLNPGDHEDTRNALPPRQDGEVTTGKYATNLAE SVLQDAFIRLSQSQSTLPQESAV  
 SVSVGSSLLPSCYSTKDTVVSRSWNELPKIVVVQSPDGSDAAPQPGISSWPEMEVSVETSSIPSGENSSR  
 QPQSALEVALACAATVIGTISSPQATERLKMEQVVSNNFPFGSSGALQTQAPQGLKEPSINEYSFPALCG  
 MTQVASAVAVCGLGEREEVTCVAVSGSLPPAAEASEAMPPLCGLASMELGKEAIAKGLLKEAALVLRTP  
 NTYSSIGDFLD SMNRRIMETASKSQTLCSENVVRNELAHTLSNVILRHSIDEVHHKNMIIDPNDNRHSSE  
 ILDTLMESTNQ LLLDVICFTFKKMSHIVRLGECPAVL SKETIRRRRETEPSCQPSDPGASQAWTKATESS  
 SSPLSNSHNTSLVINNLVDGMYSKQDKGGVRPGLFKNPTLQSQLSRSHRVPDSSTATTSSKEIYLKGIAG  
 EDTKSPHSENECRASSEQRSPVTSQSRSGSQEAEEIHPNTQEKYNCATSRINEVQVNL SLLGDDLLL  
 PAQSTLQTKHPDIYCITDFAEELADTVSMATEIAAICLDNSSGKQPWFCAWKRGSEFLMTPNVPCRSLK  
 RKKESQSGGTAVRKHKPPRLSEIKRKTDEHP ELKEKLMNRVVDSEMNLEDVPDSVNL FANEVAAKIMNLT  
 EFSMVDGMWQAQGYPRNRLLSGDRWSRLKASSCESIPEEDSEARAYVNSLGLMSTLSQPVS RASSVSKQS  
 SCESITDEF SRFMVNQ MENEGRFELL LDYYAGKNASSILNSAMQQACRKS DHL SVRPSCP SKQSSTESI  
 TEEFYRYMLRDIERDSRESASSRRSSQIWTAGLLSPSLRSPVCHRQSSMPDSRSPCSRLTVNVIKANS  
 LGFAQNCQPQDFLSVQPVSASSSGLCKSDSCLYRRGGTDHITNMLIHTWASSIEALMRNKIIVDDAE  
 ADTEPVSGGSPSQA EKCANRLAASRMC SGPTLLVQESLDCPRKDSVTECKQPPVSSLSKTASL TNHSPLD  
 SKKETSSCQDPVPINHKRRSLCSREVPLIQIETDQREACAGEPEPFLSKSSLLEEAEHGSNDKNI DPVVR  
 GGD TAVSACQIHSDSLDRDVP EAEASTEAPDEAPNPPSSSEESTGSWTQLANEEDNPDDTSSFLQLS  
 ERSMS ELVEEKKILKGQSESTEAPASGPPTGTASPQRSLLVINFDLEPECPDAELRATLQWIAASELGIP  
 TIYFKKSQENRIEKFLDVVQLVHRKSWKVGDI FHAVVQYCKMHEEQKDGRLSLFDWLLELG

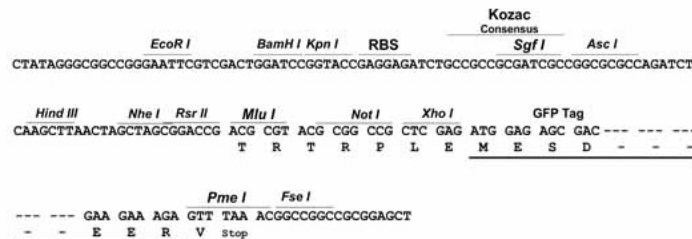
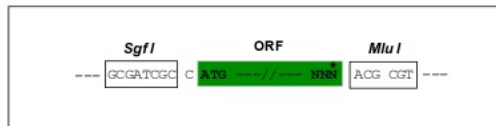
TRTRPLE - GFP Tag - V

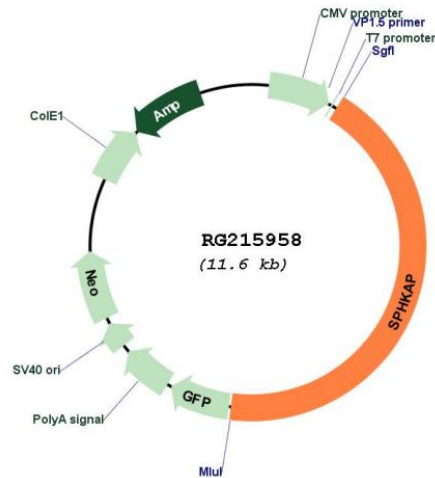
**Restriction Sites:**

Sgfl-MluI

**Cloning Scheme:**

Cloning sites used for ORF Shutting:



**Plasmid Map:**


**ACCN:** NM\_030623

**ORF Size:** 5013 bp

**OTI Disclaimer:** The molecular sequence of this clone aligns with the gene accession number as a point of reference only. However, individual transcript sequences of the same gene can differ through naturally occurring variations (e.g. polymorphisms), each with its own valid existence. This clone is substantially in agreement with the reference, but a complete review of all prevailing variants is recommended prior to use. [More info](#)

**OTI Annotation:** This clone was engineered to express the complete ORF with an expression tag. Expression varies depending on the nature of the gene.

**Components:** The ORF clone is ion-exchange column purified and shipped in a 2D barcoded Matrix tube containing 10ug of transfection-ready, dried plasmid DNA (reconstitute with 100 ul of water).

**Reconstitution Method:**

1. Centrifuge at 5,000xg for 5min.
2. Carefully open the tube and add 100ul of sterile water to dissolve the DNA.
3. Close the tube and incubate for 10 minutes at room temperature.
4. Briefly vortex the tube and then do a quick spin (less than 5000xg) to concentrate the liquid at the bottom.
5. Store the suspended plasmid at -20°C. The DNA is stable for at least one year from date of shipping when stored at -20°C.

**RefSeq:** [NM\\_030623.2](#)

**RefSeq Size:** 6825 bp

**RefSeq ORF:** 5016 bp

**Locus ID:** 80309

UniProt ID: [Q2M3C7](#)

Cytogenetics: 2q36.3

Protein Families: Druggable Genome

Gene Summary: Anchoring protein that binds preferentially to the type I regulatory subunit of c-AMP-dependent protein kinase (PKA type I) and targets it to distinct subcellular compartments. May act as a converging factor linking cAMP and sphingosine signaling pathways. Plays a regulatory role in the modulation of SPHK1.[UniProtKB/Swiss-Prot Function]