

Product datasheet for **RG215955**

TAS2R9 (NM_023917) Human Tagged ORF Clone

Product data:

Product Type:	Expression Plasmids
Product Name:	TAS2R9 (NM_023917) Human Tagged ORF Clone
Tag:	TurboGFP
Symbol:	TAS2R9
Synonyms:	T2R9; TRB6
Mammalian Cell Selection:	Neomycin
Vector:	pCMV6-AC-GFP (PS100010)
E. coli Selection:	Ampicillin (100 ug/mL)
ORF Nucleotide Sequence:	>RG215955 representing NM_023917 Red=Cloning site Blue=ORF Green=Tags(s)

TTTTGTAATACGACTCACTATAGGGCGGCCGGAATTCGTCGACTGGATCCGGTACCGAGGAGATCTGCC
GCC**CGATCGCC**

ATGCCAAGTGCAATAGAGGCAATATATATTATTTAATTGCTGGTGAATTGACCATAGGGATTTGGGGAA
ATGGATTCATTGTACTAGTTAACTGCATTGACTGGCTCAAAGAAGAGATATTCCTTGATTGACATCAT
CCTGATCAGCTTGGCCATCTCCAGAATCTGTCTGCTGTGTGAATATCATTAGATGGCTTCTTTATGCTG
CTCTTTCCAGGTACATATGGCAATAGCGTGCTAGTAAGCATTGTGAATGTTGTCTGGACATTTGCCAATA
ATCAAGTCTCTGTTTACTTCTTGCCCTCAGTATCTTCTATTTACTCAAGATAGCCAATATATCGCACCC
ATTTTTCTTCTGGCTGAAGCTAAAGATCAACAAGGTCATGCTTGGGATTCTTCTGGGGTCCCTTCTATC
TCTTTAATTATTAGTGTCCAAAGAATGATGATATGTGGTATCACCTTTCAAAGTCAGTCATGAAGAAA
ACATTACTTGAAATCAAAGTGAGTAAAATCCAGGACTTTCAAACAGTTAACCTGAACCTGGGGGC
GATGGTCCCTTTATCCTTTGCCTGATCTCATTCTTTCTGTTACTTTCTCCCTAGTTAGACACACCAAG
CAGATTCGACTGCATGCTACAGGTTTACAGAGCCCCAGTACAGAGGCCACATGAGGGCCATAAAGGCAG
TGATCATCTTTCTGCTCCTCATCGTGTACTACCCAGTCTTTCTTGTATGACCTCTAGCGCTCTGAT
TCCTCAGGGAAAATTAGTGTGATGATTGGTGACATAGTAACTGTCAATTTCCCATCAAGCCATTCATTC
ATTCTAATTATGGGAAATAGCAAGTTGAGGGAAGCTTTTCTGAAGATGTTAAGATTTGTGAAGTGTTC
TTAGAAGAAGAAAGCCTTTTGTCCA

ACGCGTACGCGGCCGCTCGAG - GFP Tag - GTTTAA



[View online »](#)

Protein Sequence: >RG215955 representing NM_023917
Red=Cloning site Green=Tags(s)

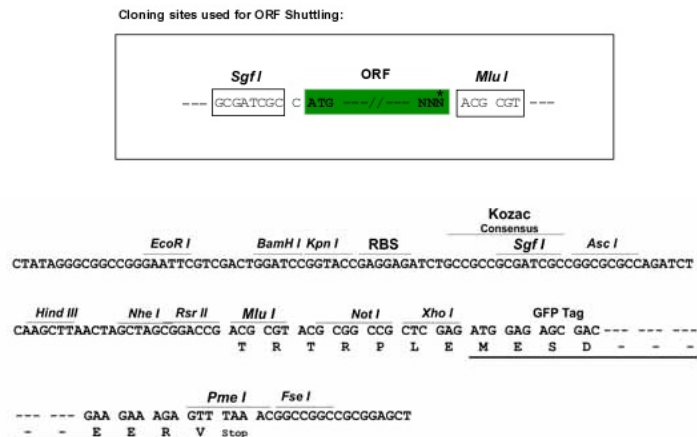
MPSAIEAIYIIL IAGELTIGIWNGFIVLVNCIDWLKRRDISLIDIILISLAISRICLLCVISLDGFFML
LFPGTYGNSVLVSIVNVVWTFANNSSLWFTSCLSIFYLLKIANISHPFFFWLKLKINKVMLAILLGSFLI
SLIISVPKNDDMWYHLFKVSHEENITWKFKVSKIPGTFKQLTLNLGAMVPFILCLISFFLLLFSLVRHTK
QIRLHATGFRDPSTEAHMRAIKAVIIFLLLLIVVYPVFLVMTSSALIPQGLVLMIGDIVTIVFPSSHSF
ILIMGNSKLREAFKMLRFVKCFLRRRKPFPV

TRTRPLE - GFP Tag - V

Restriction Sites:

Sgfl-MluI

Cloning Scheme:



ACCN: NM_023917

ORF Size: 936 bp

OTI Disclaimer: The molecular sequence of this clone aligns with the gene accession number as a point of reference only. However, individual transcript sequences of the same gene can differ through naturally occurring variations (e.g. polymorphisms), each with its own valid existence. This clone is substantially in agreement with the reference, but a complete review of all prevailing variants is recommended prior to use. [More info](#)

OTI Annotation: This clone was engineered to express the complete ORF with an expression tag. Expression varies depending on the nature of the gene.

Components: The ORF clone is ion-exchange column purified and shipped in a 2D barcoded Matrix tube containing 10ug of transfection-ready, dried plasmid DNA (reconstitute with 100 ul of water).

Reconstitution Method:

1. Centrifuge at 5,000xg for 5min.
2. Carefully open the tube and add 100ul of sterile water to dissolve the DNA.
3. Close the tube and incubate for 10 minutes at room temperature.
4. Briefly vortex the tube and then do a quick spin (less than 5000xg) to concentrate the liquid at the bottom.
5. Store the suspended plasmid at -20°C. The DNA is stable for at least one year from date of shipping when stored at -20°C.

RefSeq: [NM_023917.2](#), [NP_076406.1](#)

RefSeq Size: 1075 bp

RefSeq ORF: 939 bp

Locus ID: 50835

UniProt ID: [Q9NYW1](#)

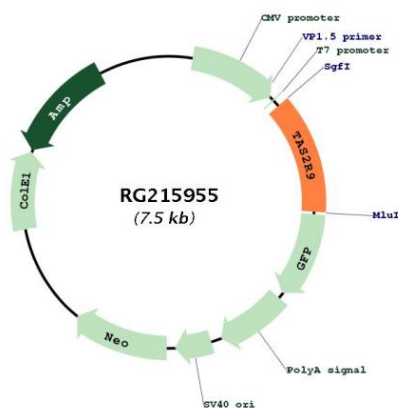
Cytogenetics: 12p13.2

Protein Families: Druggable Genome, Transmembrane

Protein Pathways: Taste transduction

Gene Summary: This gene product belongs to the family of candidate taste receptors that are members of the G-protein-coupled receptor superfamily. These proteins are specifically expressed in the taste receptor cells of the tongue and palate epithelia. They are organized in the genome in clusters and are genetically linked to loci that influence bitter perception in mice and humans. In functional expression studies, they respond to bitter tastants. This gene maps to the taste receptor gene cluster on chromosome 12p13. [provided by RefSeq, Jul 2008]

Product images:



Circular map for RG215955