

## Product datasheet for **RG215950**

### SMARCA2 (NM\_139045) Human Tagged ORF Clone

#### Product data:

Product Type:	Expression Plasmids
Product Name:	SMARCA2 (NM_139045) Human Tagged ORF Clone
Tag:	TurboGFP
Symbol:	SMARCA2
Synonyms:	BAF190; BIS; BRM; hBRM; hSNF2a; NCBRS; SNF2; SNF2L2; SNF2LA; Sth1p; SWI2
Mammalian Cell Selection:	Neomycin
Vector:	pCMV6-AC-GFP (PS100010)
E. coli Selection:	Ampicillin (100 ug/mL)
ORF Nucleotide Sequence:	>RG215950 representing NM_139045 Red=Cloning site Blue=ORF Green=Tags(s)

TTTTGTAATACGACTCACTATAGGGCGGCCGGAATTCGTCGACTGGATCCGGTACCGAGGAGATCTGCC  
GCC**CGATCGCC**

ATGTCCACGCCACAGACCCTGGTGGCATGCCACCCAGGGCCTTCGCCGGGGCCTGGGCCTTCCCCTG  
GGCCAATCTTGGGCCTAGTCCAGGACCAGGACCATCCCCAGGTTCCGTCCACAGCATGATGGGGCCAAAG  
TCCTGGACCTCCAAGTGTCTCCCATCTATGCCGACGATGGGGTCCACAGACTTCCCACAGGAAGGCATG  
CATCAAATGCATAAGCCCATCGATGGTATACATGACAAGGGGATTGTAGAAGACATCCATTGTGGATCCA  
TGAAGGGCACTGGTATGCGACCCTCACCCAGGCATGGGCCCTCCCCAGAGTCCAATGGATCAACACAG  
CCAAGTTATATGTCACCACACCCATCTCCATTAGGAGCCCCAGAGCACGTCTCCAGCCCTATGTCTGGA  
GGAGGCCCAACTCCACCTCAGATGCCACCAAGCCAGCCGGGGGCCCTCATCCCAGGTGATCCGCAGGCCA  
TGAGCCAGCCCAACAGAGGTCCCTCACCTTTCAGTCTGTCCAGTGCATCAGCTTCGAGCTCAGATTTT  
AGCTTATAAAATGCTGGCCCGAGGCCAGCCCTCCCCGAAACGCTGCAGCTTGCAGTCCAGGGGAAAAGG  
ACGTTGCCTGGCTTGAGCAACAACAGCAGCAGCAACAGCAGCAGCAGCAGCAGCAGCAGCAGCAGCAGC  
AGCAGCAACAGCAGCCGAGCAGCAGCCGCCGCAACCACAGCAGCAACAACAGCAGCCGGCCCTTGT  
TAACTACAACAGACCATCTGGCCCGGGCCGGAGCTGAGCGGCCCGAGCACCCCGCAGAAGCTGCCGGTG  
CCCAGCCCGGGCGGCCCTCGCCCGGCCCCCGCAGCCGCGCAGCCGCCCGCCGAGCTGCCCCG  
GGCCCTCAGTGCCGAGCCGCCCGGGGCGAGCCCTCGCCGTCTCCAGCTGCAGCAGAAGCAGAGCCG  
CATCAGCCCATCCAGAAACCGCAAGGCCTGGACCCCGTGGAAATTCGCAAGAGCGGGAATACAGACTT  
CAGGCCCGCATAGCTCATAGGATACAAGAACTGGAAAATCTGCCTGGCTCTTTGCCACCAGATTTAAGAA  
CCAAAGCAACCGTGGAATAAAAGCACTTCGGTTACTCAATTTCCAGCGTCAGCTGAGACAGGAGGTGGT  
GGCCTGCATGCGCAGGGACACGACCCTGGAGACGGCTCTCAACTCAAAGCATACAAACGGAGCAAGCGC  
CAGACTCTGAGAGAAGCTCGCATGACCGAGAAGCTGGAGAAGCAGCAGAAGATTGAGCAGGAGAGGAAAC  
GCCGTGAGAAACACCAGGAATACCTGAACAGTATTTGCAACATGCAAAAGATTTAAGGAATATCATCG  
GTCTGTGGCCGAAAGATCCAGAAGCTCTCAAAGCAGTGGAACCTTGGCATGCCAACACTGAAAGAGAG



[View online »](#)

CAGAAGAAGGAGACAGAGCGGATTGAAAAGGAGAGAATGCGGCGACTGATGGCTGAAGATGAGGAGGGT  
 ATAGAAAAGTATTGATCAAAAGAAAGACAGGCGTTTAGCTTACCTTTTGCAGCAGACCGATGAGTATGT  
 AGCCAATCTGACCAATCTGGTTTGGGAGCACAAGCAAGCCAGGCAGCCAAAGAGAAGAAGAAGAGGAGG  
 AGGAGGAAGAAGAAGGCTGAGGAGAATGCAGAGGGTGGGAGTCTGCCCTGGGACCGGATGGAGAGCCCA  
 TAGATGAGAGCAGCCAGATGAGTGACCTCCCTGTCAAAGTGACTCACACAGAAACCGGCAAGGTTCTGTT  
 CGGACCAGAAGCACCCAAAGCAAGTCAGCTGGACGCTGGCTGGAATGAATCCTGGTTATGAAGTTGCC  
 CCTAGATCTGACAGTGAAGAGAGTGATTCTGATTATGAGGAAGAGGATGAGGAAGAAGATCCAGTAGGC  
 AGGAAACCGAAGAGAAAATACTCCTGGATCCAAATAGCGAAGAAGTTTCTGAGAAGGATGCTAAGCAGAT  
 CATTGAGACAGCTAAGCAAGACGTGGATGATGAATACAGCATGCAGTACAGTGCCAGGGGCTCCAGTCC  
 TACTACACCGTGGCTCATGCCATCTCGGAGAGGGTGGAGAAAACAGTCTGCCCTCCTAATTAATGGGACCC  
 TAAAGCATTACCAGCTCCAGGCGCTGGAATGGATGGTTTCCCTGTATAATAACAACCTGAACGGAATCTT  
 AGCCGATGAAATGGGCTTGGAAAGACCATACAGACCATTGCACTCATCACTTATCTGATGGAGCACAAA  
 AGACTCAATGGCCCTATCTCATATTGTTCCCTTTGACTCTATCTAACTGGACATATGAATTTGACA  
 AATGGGCTCCTTCTGTGGTGAAGATTTCTACAAGGGTACTCCTGCCATGCGTCGCTCCCTTGCCCCCA  
 GCTACGGAGTGGCAAATCAATGTCCTTGTACTACTTATGAGTATATTATAAAAGACAAGCACATTCTT  
 GCAAAGATTCCGGTGGAAATACATGATAGTGGACGAAGGCCACCGAATGAAGAATCACCACTGCAAGCTGA  
 CTCAGGCTTGAACACTCACTATGTGGCCCCAGAAAGGATCCTCTTGACTGGGACCCCGTGCAGATAA  
 GCTCCCTGAACCTGCGGCGCTCCTCAACTTCTCCTCCCAACAATTTTTAAGAGCTGCAGCACATTTGAA  
 CAATGGTTCAATGCTCCATTTGCCATGACTGGTGAAGGGTGGACTTAAATGAAGAAGAACTATATTGA  
 TCATCAGGCGCTACATAAGGTGTTAAGACATTTTTACTAAGGAGACTGAAGAAAGAAGTTGAATCCCA  
 GCTTCCCGAAAAGTGGAAATATGTGATCAAGTGTGACATGTCAGCTCTGCAGAAGATTCTGTATCGCCAT  
 ATGCAAGCCAAGGGGATCCTTCTCACAGATGGTCTGAGAAAGATAAGAAGGGGAAAGGAGGTGCTAAGA  
 ACTTATGAACACTATTATGCAGTTGAGAAAAATCTGCAACCACCCATATATGTTTCAGCACATTGAGGA  
 ATCCTTTGCTGAACACCTAGGCTATTCAAATGGGGTTCATCAATGGGGTGAACGTATCGGGCCTCAGGG  
 AAGTTTGAGCTGCTTGTATCGTATTCTGCCAAAATTGAGAGCGACTAATCACCGAGTGCTGCTTTTCTGCC  
 AGATGACATCTCTCATGACCATCATGGAGGATTATTTGCTTTTTCGAACTTCTTTACCTACGCTTGA  
 TGGCACCACCAAGTCTGAAGATCGTGCTGCTTTGCTGAAGAAATCAATGAACCTGGATCCAGTATTTT  
 ATTTTCTGCTGAGCACAAAGAGCTGGTGGCCTGGGCTTAAATCTTCAGGCAGCTGATACAGTGGTATCT  
 TTGACAGCGACTGGAATCCTCATCAGGATCTGCAGGCCAAGACCGAGCTCACCGCATCGGGCAGCAGAA  
 CGAGGTCCGGTACTGAGGCTCTGTACCGTGAACAGCGTGGAGGAAAAGATCCTCGCGGCCGCAAAAATAC  
 AAGCTGAACGTGGATCAGAAAGTATCCAGGCGGGCATGTTTGACCAAAGTCTTCAAGCCACGAGCGGA  
 GGGCATTCTGCAAGGCCATCTTGAGCATGAGGAGGAAAATGAGGAAGAAGATGAAGTACCGGACGATGA  
 GACTCTGAACCAATGATTGCTCGACGAGAAGAAGAATTTGACCTTTTTATGCGGATGGACATGGACCGG  
 CGGAGGGAAGATGCCCGGAACCCGAAACGGAAGCCCGTTTAAATGGAGGAGGATGAGCTGCCCTCCTGGA  
 TCATTAAGGATGACGCTGAAGTAGAAAGGCTCACCTGTGAAGAAGAGGAGGAGAAAATATTTGGGAGGGG  
 GTCCCGCCAGCGCGTGAAGTACAGTGACGCTCACGGAGAAGCAGTGGCTAAGGGCCATCGAA  
 GACGGCAATTTGGAGGAAATGGAAGAGGAAGTACGGCTTAAAGAAGCGAAAAAGACGAAGAATGTGGATA  
 AAGATCCTGCAAAAGAAGATGTGAAAAAGCTAAGAAGAGAAGAGGCCCGCTCCCGCTGAGAACTGTC  
 ACCAAATCCCCCAAACGACAAAAGCAGATGAACGCTATCATCGATACTGTGATAAACTACAAGATAGT  
 TCAGGGCGACAGCTCAGTGAAGTCTTATTTCAGTTACCTTCAAGGAAAGAATTACCAGAATACTATGAAT  
 TAATTAGGAAGCCAGTGGATTTCAAAAAATAAAGGAAAGGATTGTAATCATAAGTACCGGAGCCTAGG  
 CGACCTGGAGAAGGATGTCATGCTTCTGTGACAACGCTCAGACGTTCAACCTGGAGGGATCCCAGATC  
 TATGAAGACTCCATCGTCTTACAGTCAAGTGTAAAGAGTCCCGGAGAAAATTTGCCAAAGAGGAAGAGA  
 GTGAGGATGAAAGCAATGAAGAGGAGGAAGAGGAAGATGAAGAAGAGTCAAGTCCGAGGCAAAATCAGT  
 CAAGGTGAAAATTAAGCTCAATAAAAAAGATGACAAAGGCCGGGACAAAGGGAAGGCAAGAAAAGGCCA  
 AATCGAGGAAAAGCCAAACCTGTAGTGAGCGATTTTGACAGCGATGAGGAGCAGGATGAACGTGAACAGT  
 CAGAAGGAAGTGGGACGGATGATGAG

ACGCGTACGCGGCCGCTCGAG – GFP Tag – GTTTAA

Protein Sequence: >RG215950 representing NM\_139045  
 Red=Cloning site Green=Tags(s)

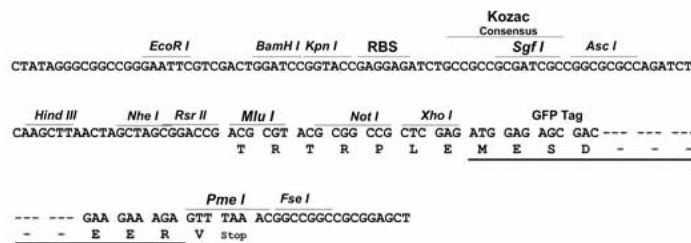
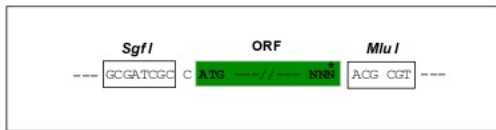
MSTPTDPGAMPHPGPSPGPGSPGPILGSPSPGPGSPGVSMMGSPGPPSVSHPMPTMGSTDFPQEGM  
 HQMHKPIDGIHDKGIVEDIHCGSMKGTGMRPPHPGMGPPQSPMDQHSQGYMSPHPSPGLAPEHVSSPMSG  
 GGPTTPQMPPSQPGALIPGDPQAMSQPNRGPSPFSPVQLHLRAQILAYKMLARGQPLPETLQLAVQGRK  
 TLPGLQQQQQQQQQQQQQQQQQQQQQQPPQPPQPTQQQQQPALVNYNRPSPGPEL SGPSTPQKLPV  
 PAPGGRPSAPPAAAQPPAAAAPGSPVQPAPGQPSPVLQLQQKQSRISPIQKPQGLDPVEILQEREYRL  
 QARIAHRIQELENLPGSLPPDLRTKATVELKALRLLNFQRLRQEVVACMRRD TTLETALNSKAYKRSKR  
 QTLREARMTEKLEKQKQIEQERKRRQKHQEYLNLSILQHAKDFKEYHRSVAGKIQKLSKAVATWHANTERE  
 QKKETERIEKERMRRLMAEDEEGYRKLIDQKDRRLAYLLQQTDEYVANL TNLVWEHKQAQAAKEKKRRR  
 RRKKKAENAEGGESALGPDGEPIDESSQMSDLPVKVTHTETGKVLFGPEAPKASQLDAWLEMNPGYEVA  
 PRSDSESDSYEEDEEEESSRQETEEKILLDPNSEEVSEKDAKQI IETAKQDVDEYSMQYSARGSQS  
 YYTVAHAISERVEKQSALLINGTLKHYQLQGLEWMVSLYNNLNGILADEMGLGKTIQTIALITYLMEHK  
 RLNGPYLIIIVPLSTLSNWTYEFDKWAPSVVKISYKGPAMRRSLVPQLRSGKFNVLTTTYEYIIKDKHIL  
 AKIRWKYMIIVDEGHRMKNHHCKLTQVLNTHYVAPRRILLTGTPLNKLPPELWALLNLFLLPTIFKSCSTFE  
 QWFNAPFAMTGERVDLNEEETILIIIRRLHKVLRPFLRRLKKEVESQLPEKVEYVIKCDMSALQKILYRH  
 MQAKGILLTDGSEKDKKGGAKTLMNTIMQLRKICNHPYMFQHIIEESFAEHLGYSNGVINGAELYRASG  
 KFELLDRIPLKLRATNHRVLLFCQMTSLMTIMEDYFAFRNFLYLRLDGTGKSEDRAALLKFNPEGSQYF  
 IFLLSTRAGGLNLQAADTVVIFDSDWNPHQDLQAQDRHRIGQQNEVRVLRCLTVNSVEEKILAAKY  
 KLNVDQKVIQAGMFDQKSSSHERRAFLQAILHEEENEDEVEPDETLNQMIARREEFDLFMRMDMDR  
 RREDARNPKRKPRLMEDELPSWIIKDDAEVERLTCEEEEEKIFGRGSRQRD VSDALTEKWLR AIE  
 DGNLEEMEEVRLKRRRRNRVDKPAKEDVEKAKRRRGRPPAEKLSNPPKLTQMNAIIDTVINYSKDS  
 SGRQLSEVFIQLPSRKELPEYELIRKPVDFKIKERIRNHKYRSLGDLEKDVMLLCHNAQTFINLEGSQI  
 YEDSIVLQSVFKSARQKIAKEEESSEDESENEEEDEEESESEAKSVKVIKLNKKDDKGRDKGKRRP  
 NRGKAKPVVSDFDSEDEQDEREQSESGTDDE

TRTRPLE - GFP Tag - V

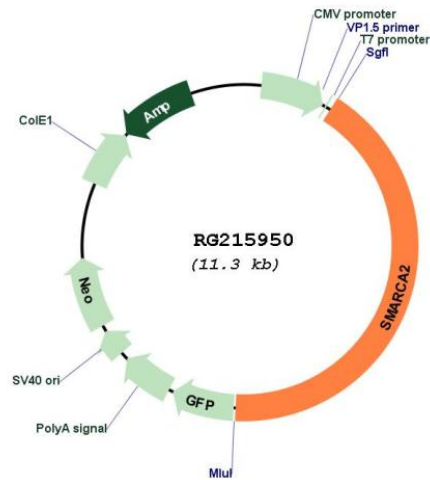
Restriction Sites: SgfI-MluI

Cloning Scheme:

Cloning sites used for ORF Shuttling:



## Plasmid Map:



ACCN: NM\_139045

ORF Size: 4716 bp

OTI Disclaimer: The molecular sequence of this clone aligns with the gene accession number as a point of reference only. However, individual transcript sequences of the same gene can differ through naturally occurring variations (e.g. polymorphisms), each with its own valid existence. This clone is substantially in agreement with the reference, but a complete review of all prevailing variants is recommended prior to use. [More info](#)

OTI Annotation: This clone was engineered to express the complete ORF with an expression tag. Expression varies depending on the nature of the gene.

Components: The ORF clone is ion-exchange column purified and shipped in a 2D barcoded Matrix tube containing 10ug of transfection-ready, dried plasmid DNA (reconstitute with 100 ul of water).

Reconstitution Method:

1. Centrifuge at 5,000xg for 5min.
2. Carefully open the tube and add 100ul of sterile water to dissolve the DNA.
3. Close the tube and incubate for 10 minutes at room temperature.
4. Briefly vortex the tube and then do a quick spin (less than 5000xg) to concentrate the liquid at the bottom.
5. Store the suspended plasmid at -20°C. The DNA is stable for at least one year from date of shipping when stored at -20°C.

RefSeq: [NM\\_139045.4](#)

RefSeq Size: 5703 bp

RefSeq ORF: 4719 bp

Locus ID: 6595

UniProt ID: [P51531](#)

Cytogenetics: 9p24.3

Protein Families: Druggable Genome

**Gene Summary:** The protein encoded by this gene is a member of the SWI/SNF family of proteins and is highly similar to the brahma protein of *Drosophila*. Members of this family have helicase and ATPase activities and are thought to regulate transcription of certain genes by altering the chromatin structure around those genes. The encoded protein is part of the large ATP-dependent chromatin remodeling complex SNF/SWI, which is required for transcriptional activation of genes normally repressed by chromatin. Alternatively spliced transcript variants encoding different isoforms have been found for this gene, which contains a trinucleotide repeat (CAG) length polymorphism. [provided by RefSeq, Jan 2014]