

Product datasheet for **RG215941**

SLITRK2 (NM_032539) Human Tagged ORF Clone

Product data:

Product Type:	Expression Plasmids
Product Name:	SLITRK2 (NM_032539) Human Tagged ORF Clone
Tag:	TurboGFP
Symbol:	SLITRK2
Synonyms:	CXorf1; CXorf2; SLITL1; TMEM257
Mammalian Cell Selection:	Neomycin
Vector:	pCMV6-AC-GFP (PS100010)
E. coli Selection:	Ampicillin (100 ug/mL)



[View online »](#)

ORF Nucleotide Sequence:

>RG215941 representing NM_032539
 Red=Cloning site Blue=ORF Green=Tags(s)

TTTTGTAATACGACTCACTATAGGGCGGCCGGGAATTCGTCGACTGGATCCGGTACCGAGGAGATCTGCC
 GCC**CGGATCGCC**

ATGCTGAGCGCGCTTTGGTTCCCTCAGTGTGTTAACCGTGGCCGGGATCTTACAGACAGAGAGTCGAAAA
 CTGCCAAAGACATTTGCAAGATCCGCTGTCTGTGCGAAGAAAAGGAAAAGTACTGAATATCAACTGTGA
 GAACAAAGGATTTACAACAGTTAGCCTGTCCAGCCCCCAGTATCGAATCTATCAGCTTTTTCTCAAT
 GGAACCTCTTGACAAGACTGTATCCAAACGAATTTGTCAATTACTCCAACGCGGTGACTCTTACCTAG
 GTAACAACGGGTTACAGGAGATCCGAACGGGGCATTCACTGGCCTGAAAACCTCTCAAAGACTGCATCT
 CAACAACAACAAGCTTGAGATATTGAGGGAGGACACCTTCTAGGCTGGAGAGCCTGGAGTATCTCCAG
 GCCGACTACAATTACATCAGTGCATCGAGGCTGGGGCATTCAAGCAACTTAACAAGCTCAAAGTGTCTCA
 TCCTGAATGACAACCTTCTGCTTCTACTGCCAGCAATGTGTTCCGCTTTGTCTGCTGACCCACTTAGA
 CCTCAGGGGGAATAGGCTAAAAGTAATGCCTTTTGTGGCGTCTTGAACATATTGGAGGGATCATGGAG
 ATTCAGCTGGAGGAAAATCCATGGAATTGCACTTGTGACTTACTTCTCTCAAGGCTGGCTAGACACCA
 TAACTGTTTTTGTGGGAGAGATTGTCTGTGAGACTCCCTTTAGGTTGCATGGGAAAAGACGTGACCCAGCT
 GACCAGGCAAGACCTCTGTCCCAGAAAAAGTGCCAGTGATTCCAGTCAGAGGGGCAGCCATGCTGACACC
 CACGTCCAAGGCTGTCACTACAATGAATCCTGCTCTCAACCCAACAGGGCTCCGAAAGCCAGCCGGC
 CGCCAAAATGAGAAATCGTCCAACCTCTCGAGTACTGTGTCAAAGGACAGGCAAAGTTTTGGACCCAT
 CATGGTGTACCAGACCAAGTCTCCTGTGCCTCTCACCTGTCCCAGCAGCTGTGTCTGCACCTCTCAGAGC
 TCAGACAATGGTCTGAATGTAACCTGCCAAGAAAGGAAGTTCATAATATCTCTGACCTGCAGCCAAAAC
 CGACAGTCCAAGAAACTCTACCTAACAGGAACTATCTTCAAACCTGTCTATAAAGATGACCTTTAGA
 ATACAGTTCTTTGGACTTACTGCACTTAGGAAACAACAGGATTGCAGTCATTCAGGAAGGTGCCTTTACA
 AACCTGACCAGTTTACGCAGACTTTATCTGAATGGCAATTACCTTGAAGTGTGTACCTTCTATGTTTG
 ATGGACTGCAGAGCTTGAATATCTCTATTTAGAGTATAATGTCATTAAGGAAATTAAGCCTCTGACCTT
 TGATGCTTTGATTAACCTACAGTACTGTTTCTGAACAACAACCTTCTTCGGTCTTACCTGATAATATA
 TTTGGGGGACGGCCCTAACAGGCTGAATCTGAGAAACAACCATTTTTCTCACCTGCCCGTAAAGGGG
 TTCTGGATCAGCTCCCGCTTTCATCCAGATAGATCTGCAGGAGAACCCTGGGACTGTACCTGTGACAT
 CATGGGCTGAAAGACTGGACAGAACATGCCAATCCCCTGTATCATTAAATGAGGTGACTTGCGAATCT
 CCTGCTAAGCATGCAGGGGAGATACTAAAATTTCTGGGGAGGAGGCTATCTGTCCAGACAGCCAAAAC
 TGTGAGATGGAACCGTCTGTCAATGAATCACAATACAGACACACCTCGGTGCTTAGTGTGTCTCTAG
 TTCTATCTGAACTACACACTGAAGTTCACCTGTCTGTCTTAATTCTGGGATTGCTTGTGTTTTTCATC
 TTATCTGTCTGTTTTGGGGCTGGTTTATTCGTCTTTGTCTTGAACGCCGAAAGGGAGTGCCGAGCGTTC
 CCAGGAATACCAACAACCTTAGACGTAAGCTCCTTTCAATTACAGTATGGGTCTTACAACACTGAGACTCA
 CGATAAAACAGACGGCCATGTCTACAATATACCCCCACCTGTGGGTGAGATGTGCAAAAACCCATC
 TACATGCAGAAGGAAGGAGACCCAGTAGCCTATTACCGAAACCTGCAAGAGTTGAGCTATAGCAACCTGG
 AGGAGAAAAAAGAAGAGCCAGCCACACCTGCTTACACAATAAGTGCCACTGAGCTGCTAGAAAAGCAGGC
 CACACCAAGAGAGCCTGAGCTGCTGTATCAAAAATTGCTGAGCGAGTCAAGGAACTTCCAGCGCAGGC
 CTAGTCCACTATAACTTTTGTACCTTACCTAAAAGGCAGTTTGCCCTTCTATGAATCTGACGCCAAA
 ACCAAGACAGAATCAATAAAACCGTTTTATATGGAACCTCCAGGAAATGCTTTGTGGGGCAGTCAAACC
 CAACCACCTTTACTGCAAGCTAAGCCGAATCAGAACCAGGACTACCTCGAAGTTCTGAAAAACAACT
 GCAATCAGTCAGCTG

ACGGTACGCGGCCGCTCGAG - GFP Tag - GTTTAA

Protein Sequence: >RG215941 representing NM_032539
Red=Cloning site Green=Tags(s)

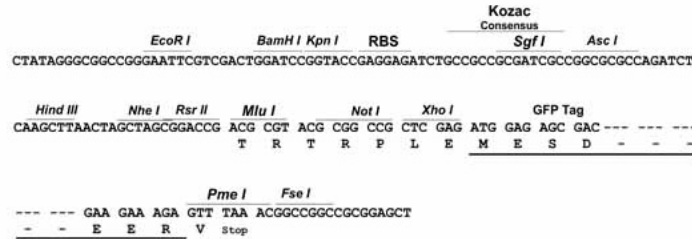
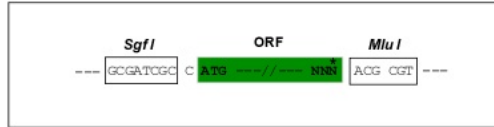
MLSGVWFLSVLTVAGILQTESRKTAKDICKIRCLCEEKENVLNINCENKGFSTTVSLLQPPQYRIYQLFLN
GNLLTRLYPNEFVNYSNAVTLHLGNGLQEIRTGAFSGLKTLKRLHLNNKLEILREDTFLGLESLEYLQ
ADYNYISAIEAGAFSKLNKLVILNDNLLLSPSNVFRFVLLTHLDLRGNRLKVMPPFAGVLEHIGGIME
IQLEENPWNCTCDLLPLKAWLDTITVFVGEIVCETPFRLHGKDVTQLTRQDLCPRKSADSSQRGSHADT
HVQRLSPTMNPALNPTRAPKASRPPKMRNRPTPRVTVSKDRQSFPIMVYQTKSPVPLTCPSSCVCTSQS
SDNGLNVNCQERKFTNISDLQPKPTSPKKLYLTGNYLQTVYKNDLLEYSSDLLHLGNNRIAVIQEAGFT
NLTSLRRLYLNGNYLEVLPSMFDGLQSLQYLLEYNVIKEIKPLTFDALINLQLLFLNNNLLRSLPDNI
FGGTALTRLNLRNNHFSHLPVKGVLDQLPAFIQIDLQENPWDCTCDIMGLKDWTEHANSPIINEVTCES
PAKHAGEILKFLGREAIKPDSPNLSDGTVLSMNHNTDTPRSLVSPSSPELHTEVPLSVLILGLLVVFI
LSVCFGAGLFVFLKRRKGVPSVPRNTNNDVSSFQLYGQSYNTEHDKTDGHVYNYIPPPVGMQCNPI
YMQKEGDPVAYYRNLEQFYSYNLEEKKEEPATPAYTISATELLEKQATPREPELLYQNIARVKELPSAG
LVHYNFCTLPKRQFAPSYESRRQNQDRINKTVLYGTPRCKFVQSKPNHPLLQAKPQSEPDYLEVLEKQT
AISQL

TRTRPLE - GFP Tag - V

Restriction Sites: Sgfl-MluI

Cloning Scheme:

Cloning sites used for ORF Shuttling:



ACCN: NM_032539

ORF Size: 2535 bp

OTI Disclaimer: The molecular sequence of this clone aligns with the gene accession number as a point of reference only. However, individual transcript sequences of the same gene can differ through naturally occurring variations (e.g. polymorphisms), each with its own valid existence. This clone is substantially in agreement with the reference, but a complete review of all prevailing variants is recommended prior to use. [More info](#)

OTI Annotation: This clone was engineered to express the complete ORF with an expression tag. Expression varies depending on the nature of the gene.

Components: The ORF clone is ion-exchange column purified and shipped in a 2D barcoded Matrix tube containing 10ug of transfection-ready, dried plasmid DNA (reconstitute with 100 ul of water).

Reconstitution Method:

1. Centrifuge at 5,000xg for 5min.
2. Carefully open the tube and add 100ul of sterile water to dissolve the DNA.
3. Close the tube and incubate for 10 minutes at room temperature.
4. Briefly vortex the tube and then do a quick spin (less than 5000xg) to concentrate the liquid at the bottom.
5. Store the suspended plasmid at -20°C. The DNA is stable for at least one year from date of shipping when stored at -20°C.

RefSeq: [NM_032539.5](#)

RefSeq Size: 5022 bp

RefSeq ORF: 2538 bp

Locus ID: 84631

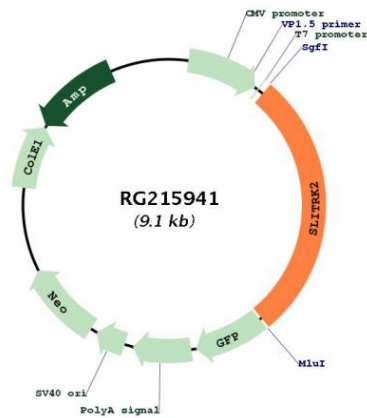
UniProt ID: [Q9H156](#)

Cytogenetics: Xq27.3

Protein Families: Transmembrane

Gene Summary: This gene encodes an integral membrane protein that contains two N-terminal leucine-rich repeats domains and contains C-terminal regions similar to neurotrophin receptors. The encoded protein may play a role in modulating neurite activity. Alternatively spliced transcript variants encoding the same protein have been described.[provided by RefSeq, Feb 2010]

Product images:



Circular map for RG215941