

Product datasheet for **RG215899**

CARD9 (NM_052813) Human Tagged ORF Clone

Product data:

Product Type:	Expression Plasmids
Product Name:	CARD9 (NM_052813) Human Tagged ORF Clone
Tag:	TurboGFP
Symbol:	CARD9
Synonyms:	CANDF2; hCARD9
Mammalian Cell Selection:	Neomycin
Vector:	pCMV6-AC-GFP (PS100010)
E. coli Selection:	Ampicillin (100 ug/mL)



[View online »](#)

ORF Nucleotide Sequence:

>RG215899 representing NM_052813
 Red=Cloning site Blue=ORF Green=Tags(s)

TTTTGTAATACGACTCACTATAGGGCGGCCGGAATTCGTCGACTGGATCCGGTACCGAGGAGATCTGCC
 GCC**CGGATCGCC**

ATGTCGGACTACGAGAACGATGACGAGTCTGGAACGCTCGGAGGGCTCCGGGTGACGCTCACCTCGG
 TCATCGACCCCTCACGCATCACACCTTACTGCGGCAGTGAAGTCTGAACCCCTGATGATGAGGAGCA
 GGTGCTCAGCGACCCCAACCTGGTCATCCGCAAACGAAAGTGGGTGTGCTCCTGGACATCCTGCAGCGG
 ACCGGCCACAAGGGCTACGTGGCCTTCTCGAGAGCCTGGAGCTCTACTACCCGAGCTGTACAAGAAGG
 TCACAGGCAAGGAGCCGGCCCGCTTCTCCATGATCATCGACGCGTCCGGGGAGTCAAGCCTGACTCA
 GCTGCTGATGACTGAGGTATGAAGTGCAGAAGAAGTGCAGGACCTGACCCGCTGCTGAGCTCCAAA
 GATGACTTCATCAAGGAGCTGCGGGTGAAGGACAGCCTGCTGCGCAAGCACCAGGAGCGTGTGCAGAGGC
 TCAAGGAGGAGTGCAGGCGCCGAGCCGCGAGCTCAAGCGCTGCAAGGAGGAGAACTACGACCTGGCCAT
 GCGCCTGGCGCACCAGAGTGAAGGAGAGGGCGCCGCGCTCATGCGGAACCGTGACCTGCAGCTGGAGATT
 GACCAGCTCAAGCACAGCCTCATGAAGGCCGAGGACGACTGCAAGGTGGAGCGCAAGCACAGCTGAAGC
 TCAGGCACGCCATGGAGCAGCGCCAGCCAGGAGCTGCTGTGGGAGCTGCAGCAGGAGAAGGCCCTGCT
 CCAGGCCCGGGTGCAGGAGCTGGAGGCCTCCGTCCAGGAGGGGAAGCTGGACAGGAGCAGCCCTACATC
 CAGGACTGGAGGAGGACTGGCGCAGGCGCTGCGGGACCACCAGGAGCAGGCCAACACCATCTTCTCCC
 TGCGCAAGGACCTCCGCCAGGGCGAGGCCGACGCTCCGGTGCATGGAGGAGAAGGAGATGTTTCGAGCT
 GCAGTGCCTGGCACTACGTAAGGACTCCAAGATGTACAAGGACCGCATCGAGGCCATCCTGCTGCAGATG
 GAGGAGTCCGCAATTGAGCGGGACCAGGCCATAGCCACGCGGGAGGAGCTGCACGCACAGCAGCCCGGG
 GCCTGCAGGAGAAGGACGCGCTGCGCAAGCAGGTGCGGGAGCTGGGCGAGAAGGGCGGATGAGCTGCAGT
 GCAGGTGTTCCAGTGTGAGGCGCAGCTACTGGCCGTGGAGGGCAGGCTCAGGCGGCAGCAGCTGGAGACG
 CTGCTCTGAGCTCCGACCTGGAAGATGGCTCACCCAGGAGGTCCAGGAGCTCTCACTCCCCAGGACC
 TGGAGGACACCCAGCTCTCAGACAAAGGCTGCCTTGCCGGCGGGGGAGCCGAAACAGCCCTTTCAGC
 TCTGCACCAGGAGCAGGTTTTGCGGAACCCCATGACGCAGGCTGAGCAGCGGGAGCCGCGCGAGAAG
 GAGCGGCGGCCTCAAAGAGAGTTTTGAGAAGTACCAGGAGGAGCGCCCTCAGGAAGATGCAGAAAG
 GATGGCGGCAGGGGAGGAGGACCGGGAGAACCACGCGGCAGCGACAACACCGACTGAGGGCTCC

AC**GGGCCGCTCGAG** - GFP Tag - GTTAA

Protein Sequence:

>RG215899 representing NM_052813
 Red=Cloning site Green=Tags(s)

MSDYENDEECWNVLEGRVTLTIVIDPSRITPYLRQCKVLPDDEEQVLSDPNLVIRKRKVGVLDDILQR
 TGHKGYVAFLESLELYYPQLYKVTGKEPARVFSMIIDASGESGLTQLLMTEVMKLQKKVQDLTALLSSK
 DDFIKELRVKDSLLRKHQERVQRLKEECEAGSRELKRCKEENYDLAMRLAHQSEEKGAALMRNLDLQLEI
 DQLKHSLMKAEDDCKVERKHTLKL RHAMEQRPSQELLWELQQEKALLQARVQELEASVQEGKLD RSPYI
 QVLEEDWRQALRDHQEQANTIFSLRKDLRQGEARRLRCEEMFELQCLALRKDSKMYKDRIEAILLQM
 EEVAIERDQAIATREELHAQHARGLQEKDALRKQVRELGEKADELQLQVFQCEAQLLAVEGRLRRQQLT
 LVLSSDLEDGSPRRSQELSLPQDLEDTQLSDKGCLAGGGSPKQPF AALHQEQVLRNPHDAGLSSGEPPEK
 ERRRLKESFENYRRKRALRKMQKQGWQGEEDRENTTGSNDTDEGS

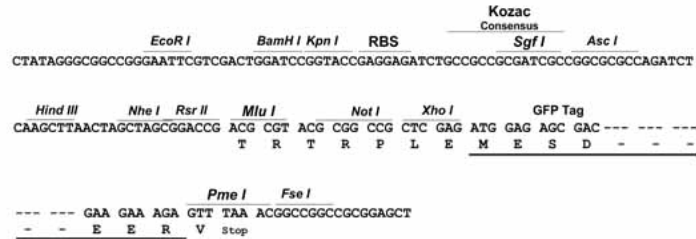
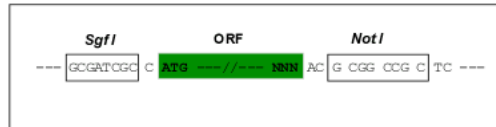
TRPLE - GFP Tag - V

Restriction Sites:

Sgfl-NotI

Cloning Scheme:

Cloning sites used for ORF Shutting:


ACCN: NM_052813

ORF Size: 1608 bp

OTI Disclaimer: The molecular sequence of this clone aligns with the gene accession number as a point of reference only. However, individual transcript sequences of the same gene can differ through naturally occurring variations (e.g. polymorphisms), each with its own valid existence. This clone is substantially in agreement with the reference, but a complete review of all prevailing variants is recommended prior to use. [More info](#)

OTI Annotation: This clone was engineered to express the complete ORF with an expression tag. Expression varies depending on the nature of the gene.

Components: The ORF clone is ion-exchange column purified and shipped in a 2D barcoded Matrix tube containing 10ug of transfection-ready, dried plasmid DNA (reconstitute with 100 ul of water).

Reconstitution Method:

1. Centrifuge at 5,000xg for 5min.
2. Carefully open the tube and add 100ul of sterile water to dissolve the DNA.
3. Close the tube and incubate for 10 minutes at room temperature.
4. Briefly vortex the tube and then do a quick spin (less than 5000xg) to concentrate the liquid at the bottom.
5. Store the suspended plasmid at -20°C. The DNA is stable for at least one year from date of shipping when stored at -20°C.

RefSeq: [NM_052813.2](#), [NP_434700.2](#)
RefSeq Size: 2136 bp

RefSeq ORF: 1611 bp

Locus ID: 64170

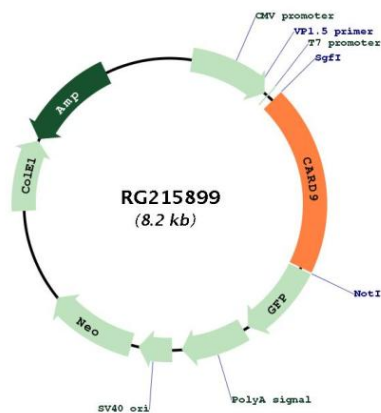
UniProt ID: [Q9H257](#)
Cytogenetics: 9q34.3

Protein Families: Druggable Genome

Protein Pathways: NOD-like receptor signaling pathway

Gene Summary: The protein encoded by this gene is a member of the CARD protein family, which is defined by the presence of a characteristic caspase-associated recruitment domain (CARD). CARD is a protein interaction domain known to participate in activation or suppression of CARD containing members of the caspase family, and thus plays an important regulatory role in cell apoptosis. This protein was identified by its selective association with the CARD domain of BCL10, a positive regulator of apoptosis and NF-kappaB activation, and is thought to function as a molecular scaffold for the assembly of a BCL10 signaling complex that activates NF-kappaB. Several alternatively spliced transcript variants have been observed, but their full-length nature is not clearly defined. [provided by RefSeq, Jul 2008]

Product images:



Circular map for RG215899