

## Product datasheet for **RG215896**

### **FOXK1 (NM\_001037165) Human Tagged ORF Clone**

#### **Product data:**

<b>Product Type:</b>	Expression Plasmids
<b>Product Name:</b>	FOXK1 (NM_001037165) Human Tagged ORF Clone
<b>Tag:</b>	TurboGFP
<b>Symbol:</b>	FOXK1
<b>Synonyms:</b>	FOXK1L
<b>Mammalian Cell Selection:</b>	Neomycin
<b>Vector:</b>	pCMV6-AC-GFP (PS100010)
<b>E. coli Selection:</b>	Ampicillin (100 ug/mL)



[View online »](#)

ORF Nucleotide Sequence: >RG215896 representing NM\_001037165  
 Red=Cloning site Blue=ORF Green=Tags(s)

GCCGGGAATTCGTCGACTGGATCCGGTACCGAGGAGATCTGCCGCCGCGATCGCCGGCGGCCAGATCTCAAGCTTAACTAGCTAGCGGACCGAC

ATGGCCGAAGTCGGCGAGGACAGCGGCGCCCGCCCTGCTCGCGCTGCGCTCGGCGCCCTGCAGCCAG  
 TGCTGTGCGCCGAGCCGCCCGCCGCTTCCCCGCGCCGACCCCGCCGCCCGCGCAGCCCA  
 GCCTCCGCCCGGGCCGCCCGCCGCCACCGCGCTGCCTCCGGGCGGATCGCGGGCGCGGGTCC  
 TCCGGGGCTCCTCCGGGTATCCGGGACTCCGCGGTGCGGGCGCGGCCCGCCCTGGTGGCCGCG  
 CGGCCGCTCGGTACGGCAGAGCCGGGGCCGGCGCTGGCGCGGTGGAGGGCCGCGAGTTCGAGTTCCT  
 CATGCGCCAGCCAGCGTCACCATCGGCCAACTCGTCGAGGGCTCGGTGGACTTGAGCATGGGCCTG  
 TCCAGTTCATCTCGCGGCCACTGCAGCTCAGCTTCCAGGAGCCGCACTTCTACCTGCGTGCCTCG  
 GCAAGAACGGCGTCTTCGTGGACGGGCTTCCAGAGACGCGCGGCCCGCCCTGCAGCTGCCAAGCA  
 GTGTACCTCCGGTTCCAGCACGGCCATCAAGATCCAGTTCAGTGCCTCTATCACAAGAAGAGGCC  
 CCAGCTCCCCGCTGCGGCCACTGTACCCCGATCTCCCTCTGAAGATCCACATCCCGGAGCCGACC  
 TCCGGAGCATGGTCAGCCCCGCTCCCTCCCGACGGGACCATCAGTGTCCCAACTCCTGCCAGCCAG  
 TCCACGCGGTGCCGGTCTCCTCAGTTACCGTTTGTGCAAGCGTGACCTCGGACCTGCAGCTGGCAGCA  
 GAGTTTGCAGCAAAGGCCGCTCGGAGCAGCAGGCAGACAGTCTGGAGGAGACAGCCCAAGGATGAGT  
 CAAAGCCGCGTTCTCCTACGCGCAGCTGATCGTGCAGGCCATCTCCTCCGCCAGGACCGGCAGCTGAC  
 CCTGAGCGGATCTACGCCACATCACCAAGCATTACCCCTACTACGGAGCGCCGACAAAGGCTGGCAG  
 AATTCTATCCGGCACAACCTCTCTTTGAACCGTTACTTTATCAAAGTCCCAGTTCAGGAGGAGCCTG  
 GGAAGGGTCTTTTGGGAATAGACCCTGCCTCTGAAGCAAGCTCGTGAACAGGCATTCCGAAACG  
 GAGCAGAGGGGTGTCTCTGCTCCGACCCCTTCGGGCTCTGTCTCAAGGAGCGCTCCAGCTTCG  
 CCCACACACCCCGGGTGTATGTCCTCGCTCCGGCGGCTGCAGACCCAGAGTGCCTGTCTCGGGAGG  
 GCTCCCCATTCCACACGACCCTGAGTTGGGTCCAAGTTAGTCTGTCTCCAGAGTACCGGTATTCCCA  
 AAGGCACCCGGTCCCCGTCAGCGCCAGCCAGTATCATGGCCGTGCCTCCCGACCGTCCAGCCTC  
 GTGGCCAAGCCGTGGCTACATGCCCGCTCCATCGTAACCTCACAGCAGCCCGCGGCCACGCCATCC  
 ACGTCGTGCAGCAGGCCCCACCGTACCATGGTCAGGGTGGTACCACATCTGCCAACTCGGCCAACGG  
 ATACATCTCACCAGCCAGGGCGCGGGGGGCTCCCATGATGCGGGGGCGCAGCCGTGCTGGACCTG  
 GGCAGCGAGGCCAGAGCCTGGAGGAGAAACCACCATTCGTTTGCACAATCCCGCGGCTGGTGGAG  
 TCATCCAGACGGTGGCCAGCCAGATGGCCCCGGGGTCCCGGACACACGGTACCATCCTGCAGCCCGC  
 CACACCGTGACCCTCGGGCAGCACCTTCCAGTCCGGGCCGTGACCCAGAACGGAAGCATGCGGTT  
 CCCACGAACAGTTTAGCCGGCAACGTTACGCCCTCACAGCCCTTTGCAGCTCCTTGCAGCCAAAGCGA  
 GTTCATCCGCGCCGGTGGTGGTACCCGGGTGTGCGAGGTGGGGCCAAAGGAGCCAGCAGCAGCCGTGCG  
 GGCCACGGCCACCACCAGCCACTGCCACCACCGCTCTGCCTCCGCCTTCCACTGGAGAGCCC  
 GAGGTCAAAGGTCCCGGGTGGAGGAGCCAGTGGGGCTGAACACACCGGCTGGAGTATCGCAGCTG  
 CCGGCCCCAGGGCCAGGCACCGGGAG

ACGCGTACGCGCCGCTCGAG - GFP Tag - GTTTAA

**Protein Sequence:** >RG215896 representing NM\_001037165  
Red=Cloning site Green=Tags(s)

```

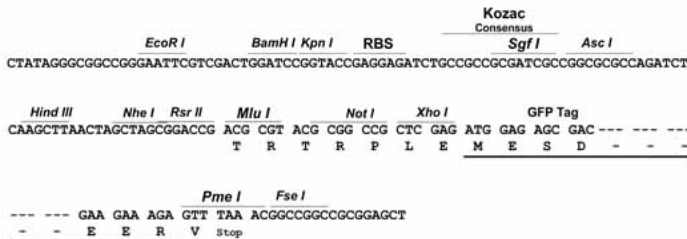
MAEVGEDSGARALLALRSAPCSPVLCAAAAAAFPAAAPPPAPAQPQPPPPPPPPPPPLPPGAIAGAGS
SGGSSGVSGDSAVAGAAPALVAAAAASVRQSPGALARLEGREFEFLMRQPSVTIGRNSSQGSVDLSMGL
SSFISRRLQLSFQEPHFYLRCLGKNGVFDGAFQRRGAPALQLPKQCTFRFPSTAIIQFTSLYHKEEA
PASPLRPLYPQISPLKIHPEPDLRSMVSPVSPGTISVPNSCPASPRGAGSSSYRFVQNVTSDLQLAA
EFAAKAASEQQADTSGGDSPKDESKPPFSYAQLIVQAISSAQDRQLTLSGIYAHITKHYPYYRTADKGWQ
NSIRHNLNLNRYFIKVPRSQEEP GKGSFWRIDPASEAKLVEQAFRRRQRQGVSCFRTPFGPLSSRSAPAS
PTHPLMSPRSGGLQTPCELSREGSPIPHDPEFGSKLASVPEYRYSQSAPGSPVSAQPVIMAVPPRPSL
VAKPVAYMPASIVTSQQPAGHAIHVVQQAPTVMVRVTTSSANSANGYILTSQGAAGGSHDAAGA AVL DL
GSEARGLEEKPTIAFATIPAAGGVIQTVASQMAPGVPGHVTILQPATPVTLGQHLLPVRAVTQNGKHAV
PTNSLAGNAYALTSPLQLLATQASSAPVVVTRVCEVGPKEPAAVAATATTT PATAT TASASASSTGEP
EVKRSRVEEPSGAVTTPAGVIAAAGPQGP GTGE
    
```

TRTRPLE - GFP Tag - V

**Restriction Sites:** RsrII-MluI

**Cloning Scheme:**

Cloning sites used for ORF Shuttling:



**ACCN:** NM\_001037165

**ORF Size:** 2199 bp

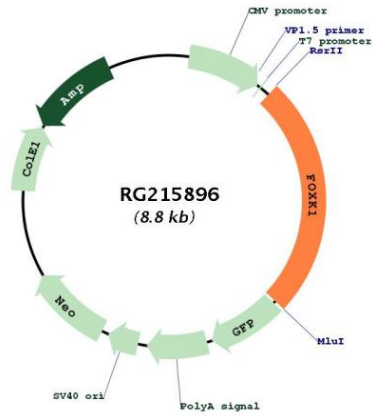
**OTI Disclaimer:** The molecular sequence of this clone aligns with the gene accession number as a point of reference only. However, individual transcript sequences of the same gene can differ through naturally occurring variations (e.g. polymorphisms), each with its own valid existence. This clone is substantially in agreement with the reference, but a complete review of all prevailing variants is recommended prior to use. [More info](#)

**OTI Annotation:** This clone was engineered to express the complete ORF with an expression tag. Expression varies depending on the nature of the gene.

**Components:** The ORF clone is ion-exchange column purified and shipped in a 2D barcoded Matrix tube containing 10ug of transfection-ready, dried plasmid DNA (reconstitute with 100 ul of water).

<b>Reconstitution Method:</b>	<ol style="list-style-type: none"><li>1. Centrifuge at 5,000xg for 5min.</li><li>2. Carefully open the tube and add 100ul of sterile water to dissolve the DNA.</li><li>3. Close the tube and incubate for 10 minutes at room temperature.</li><li>4. Briefly vortex the tube and then do a quick spin (less than 5000xg) to concentrate the liquid at the bottom.</li><li>5. Store the suspended plasmid at -20°C. The DNA is stable for at least one year from date of shipping when stored at -20°C.</li></ol>
<b>RefSeq:</b>	<a href="#">NM_001037165.1</a> , <a href="#">NP_001032242.1</a>
<b>RefSeq Size:</b>	11191 bp
<b>RefSeq ORF:</b>	2202 bp
<b>Locus ID:</b>	221937
<b>UniProt ID:</b>	<a href="#">P85037</a>
<b>Cytogenetics:</b>	7p22.1
<b>Gene Summary:</b>	<p>Transcriptional regulator involved in different processes such as glucose metabolism, aerobic glycolysis, muscle cell differentiation and autophagy (By similarity). Recognizes and binds the forkhead DNA sequence motif (5'-GTAAACA-3') and can both act as a transcription activator or repressor, depending on the context (PubMed:17670796). Together with FOXK2, acts as a key regulator of metabolic reprogramming towards aerobic glycolysis, a process in which glucose is converted to lactate in the presence of oxygen (By similarity). Acts by promoting expression of enzymes for glycolysis (such as hexokinase-2 (HK2), phosphofructokinase, pyruvate kinase (PKLR) and lactate dehydrogenase), while suppressing further oxidation of pyruvate in the mitochondria by up-regulating pyruvate dehydrogenase kinases PDK1 and PDK4 (By similarity). Probably plays a role in gluconeogenesis during overnight fasting, when lactate from white adipose tissue and muscle is the main substrate (By similarity). Involved in mTORC1-mediated metabolic reprogramming: in response to mTORC1 signaling, translocates into the nucleus and regulates the expression of genes associated with glycolysis and downstream anabolic pathways, such as HIF1A, thereby regulating glucose metabolism (By similarity). Together with FOXK2, acts as a negative regulator of autophagy in skeletal muscle: in response to starvation, enters the nucleus, binds the promoters of autophagy genes and represses their expression, preventing proteolysis of skeletal muscle proteins (By similarity). Acts as a transcriptional regulator of the myogenic progenitor cell population in skeletal muscle (By similarity). Binds to the upstream enhancer region (CCAC box) of myoglobin (MB) gene, regulating the myogenic progenitor cell population (By similarity). Promotes muscle progenitor cell proliferation by repressing the transcriptional activity of FOXO4, thereby inhibiting myogenic differentiation (By similarity). Involved in remodeling processes of adult muscles that occur in response to physiological stimuli (By similarity). Required to correct temporal orchestration of molecular and cellular events necessary for muscle repair (By similarity). Represses myogenic differentiation by inhibiting MEFC activity (By similarity). Positively regulates Wnt/beta-catenin signaling by translocating DVL into the nucleus (PubMed:25805136). Reduces virus replication, probably by binding the interferon stimulated response element (ISRE) to promote antiviral gene expression (PubMed:25852164).[UniProtKB/Swiss-Prot Function]</p>

Product images:



Circular map for RG215896