

## Product datasheet for **RG215895**

### **Glyt1 (SLC6A9) (NM\_006934) Human Tagged ORF Clone**

#### **Product data:**

Product Type:	Expression Plasmids
Product Name:	Glyt1 (SLC6A9) (NM_006934) Human Tagged ORF Clone
Tag:	TurboGFP
Symbol:	SLC6A9
Synonyms:	GCENSG; GLYT1
Mammalian Cell Selection:	Neomycin
Vector:	pCMV6-AC-GFP (PS100010)
E. coli Selection:	Ampicillin (100 ug/mL)



[View online »](#)

**ORF Nucleotide Sequence:**

>RG215895 representing NM\_006934  
 Red=Cloning site Blue=ORF Green=Tags(s)

GACGTTGTATACGACTCCTATAGGGCGGCCGGAATTCGTCGACTGGATCCGGTACCGAGGAGATCTGCC  
 GCCGGCGCGCC

ATGAGCGGCGGAGACACGCGGGCTGCGATCGCTCGCCCCAGGATGGCCGCGGCTCATGGACCTGTGGCCC  
 CCTCTTCCCAGAACAGAATGGTGTGTGCCAGCGAGGCCACCAAGAGGGACCAGAACCTCAAACGGGG  
 CAACTGGGGCAACCAGATCGAGTTTGTACTGACGAGCGTGGGCTATGCCGTGGGCTGGGCAATGTCTGG  
 CGTTCCCATACCTCTGTATCGCAACGGGGGAGGCGCCTTCATGTTCCCTACTTCATCATGCTCATCT  
 TCTGCGGGATCCCCCTCTTTCATGGAGCTCTCCTTCGCCAGTTTGAAGCCAGGGGTGCCTGGGGGT  
 CTGAGGATCAGCCCCATGTTCAAAGGAGTGGCTATGGTATGATGGTGGTGTCCACCTACATCGGCATC  
 TACTACAAATGTGGTCATCTGCATCGCTTCTACTACTTCTCTCGTCCATGACGCACGTGCTGCCCTGGG  
 CCTACTGCAATAACCCCTGGAACACGCATGACTGCGCCGGTGTACTGGACGCCTCAACCTACCAATGG  
 CTCTCGGCCAGCCGCTTGGCCAGAACCTCTCCACCTGCTCAACCACAGCCTCCAGAGGACCAGCCCC  
 AGCGAGGAGTACTGGAGGCTGTACGTGCTGAAGCTGTCAGATGACATTGGGAACTTTGGGAGGTGCGGC  
 TGCCCCCTCTTGCTGCCTCGGTGTCTCCTGGTTGGTCTCTTCTGCTCATCCGAGGGGTCAAGTC  
 TTCAGGGAAAGTGGTGTACTTCACGGCCACGTTCCCTACGTGGTGTGACCATTTCTGTTTGTCCGCGGA  
 GTGACCTGGAGGGAGCCTTTGACGGCATCATGTACTACCTAACCCCGCAGTGGGACAAGATCCTGGAGG  
 CCAAGGTGTGGGTGATGCTGCCTCCAGATCTTACTACTGGGCTGCGCGTGGGAGGCCTCATCAC  
 CATGGCTTCTACAACAAGTCCACAATAACTGTTACCGGGACAGTGTATCATCAGCATACCAACTGT  
 GCCACCAGCGTCTATGCTGGCTTCGTATCTTCTCCATCCTCGGCTTCATGGCCAATCACCTGGCGGTG  
 ATGTGTCCCGTGTGGCAGACCACGGCCCTGGCCCTCGTGGCTTACCCCGAGGCCCTCACACTACT  
 TCCCATCTCCCCGTGTGGTCTCTGCTCTTCTTTCATGCTTATCCTGCTGGGGCTGGGACTCAGTTC  
 TGCTCTGAGACGCTGGTACAGCCATTGTGGATGAGGTGGGAATGAGTGGATCCTGCAGAAAAGA  
 CCTATGTGACCTTGGCGTGGCTGTGGCTGGCTTCTGCTGGCATCCCCCTCACCAGCCAGGCAGGCAT  
 CTATTGGCTGCTGATGGACAATAAGCGCCAGCTTCTCCTTGGTGGTATCTCCTGCATCATGTGT  
 GTGGCCATCATGTACATCTACGGGCACCGGAATACTCCAGGACATCCAGATGATGCTGGGATCCCAC  
 CACCCCTCTTCTTTCAGATCTGCTGGCGCTTCGTCTCTCCGCCATCATCTTCTTATTCTAGTTTTAC  
 TGTGATCCAGTACCAGCCGATCACCTACAACACTACCAGTACCAGGCTGGGCCGTGGCATTGGCTTC  
 CTCATGGCTCTGTCTCGTCTCTGCATCCCCCTCTACGCCATGTTCCGGCTCTGCCGCACAGACGGGG  
 ACACCCCTCTCCAGCCTTGAATAATGCCACAAAGCCAAGCAGAGACTGGGGCCCTGCCCTCTGGAGCA  
 CCGGACAGGGCGCTACGCCCCCACCATAGCCCCCTCTCCTGAGGACGGCTTCGAGGTCCAGCCACTGCAC  
 CCGGACAAGGCGCAGATCCCCATTGTGGGCAGTAATGGCTCCAGCCGCTCCAGGACTCCCGGATA

ACGCGTACGCGGCCGCTCGAG – GFP Tag – GTTTAA

**Protein Sequence:**

>RG215895 representing NM\_006934  
 Red=Cloning site Green=Tags(s)

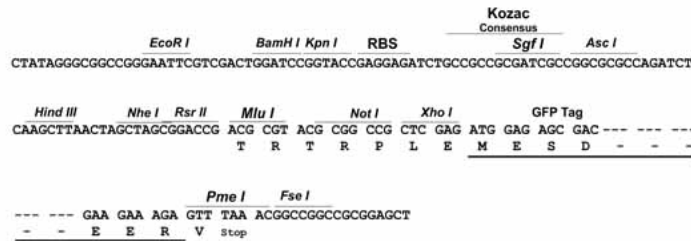
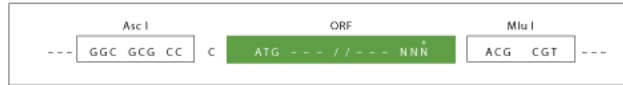
MSGDTRAAIARPRMAAAHGPVAPSSPEQNGAVPSEATKRDQNLKRGNWGNQIEFVLTSVGYAVGLGNVW  
 RFPYLCYRNGGGAFMFPYFIMLIFCGIPLFFMELSFQGFASQGLGVWRISPMFKGVGYGMMVVSTYIGI  
 YYNVVICIAFYFFSSMTHVLPWAYCNPWNTHDCAGVLDASNLNNGSRPAALPSNLSHLLNHSLQRTSP  
 SEEYWRLYVYVLLSDDIGNFGEVRLPLLGLGVSWLVVFLCLIRGVKSSGKVVYFATFPYVVLITLTVRG  
 VTLEGAFDGIMYYLTPQWDKILEAKVWGDAAASQIFYSLGCAWGLITMASYNKFNHNCYRDSVIIISITNC  
 ATSYYAGFVIFSLGFMANHLGVDVSRVADHGPGLAFVAYPEALTLPIISPLWSLLFFMLILLGLGTQF  
 CLELTVTAIVDEVGNEWILQKKTYVTLGVAVAGFLLGIPLTSQAGIYWLLLMDNYAASFSLVVISICIMC  
 VAIMYIYGHRNYFQDIQMLGFPPPLFFQICWRFVSPAIIFFILVFTVIQYQPITYNHYYQPGWAVAI  
 LMASSVLCIPLYAMFRLCRTDGDLLQRLKNATKPSRDWGPALLEHRTGRYAPTIA SPEDGFEVQPLH  
 PDKAQIPIVGSNGSSRLQDSRI

TRTRPLE – GFP Tag – V

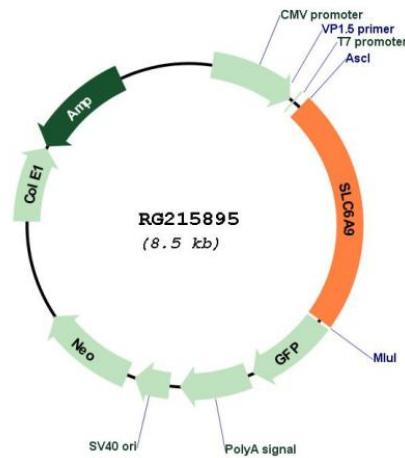
Restriction Sites: Ascl-MluI

Cloning Scheme:

Cloning sites used for ORF Shuttling:



Plasmid Map:



ACCN: NM\_006934

ORF Size: 1956 bp

<b>OTI Disclaimer:</b>	The molecular sequence of this clone aligns with the gene accession number as a point of reference only. However, individual transcript sequences of the same gene can differ through naturally occurring variations (e.g. polymorphisms), each with its own valid existence. This clone is substantially in agreement with the reference, but a complete review of all prevailing variants is recommended prior to use. <a href="#">More info</a>
<b>OTI Annotation:</b>	This clone was engineered to express the complete ORF with an expression tag. Expression varies depending on the nature of the gene.
<b>Components:</b>	The ORF clone is ion-exchange column purified and shipped in a 2D barcoded Matrix tube containing 10ug of transfection-ready, dried plasmid DNA (reconstitute with 100 ul of water).
<b>Reconstitution Method:</b>	<ol style="list-style-type: none"><li>1. Centrifuge at 5,000xg for 5min.</li><li>2. Carefully open the tube and add 100ul of sterile water to dissolve the DNA.</li><li>3. Close the tube and incubate for 10 minutes at room temperature.</li><li>4. Briefly vortex the tube and then do a quick spin (less than 5000xg) to concentrate the liquid at the bottom.</li><li>5. Store the suspended plasmid at -20°C. The DNA is stable for at least one year from date of shipping when stored at -20°C.</li></ol>
<b>RefSeq:</b>	<a href="#">NM_006934.4</a>
<b>RefSeq Size:</b>	3213 bp
<b>RefSeq ORF:</b>	1959 bp
<b>Locus ID:</b>	6536
<b>UniProt ID:</b>	<a href="#">P48067</a>
<b>Cytogenetics:</b>	1p34.1
<b>Protein Families:</b>	Druggable Genome, Transmembrane
<b>Gene Summary:</b>	The amino acid glycine acts as an inhibitory neurotransmitter in the central nervous system. The protein encoded by this gene is one of two transporters that stop glycine signaling by removing it from the synaptic cleft. [provided by RefSeq, Jun 2016]