

Product datasheet for **RG215857**

GM CSF Receptor alpha (CSF2RA) (NM_006140) Human Tagged ORF Clone

Product data:

Product Type:	Expression Plasmids
Product Name:	GM CSF Receptor alpha (CSF2RA) (NM_006140) Human Tagged ORF Clone
Tag:	TurboGFP
Symbol:	GM CSF Receptor alpha
Synonyms:	alphaGMR; CD116; CDw116; CSF2R; CSF2RAX; CSF2RAY; CSF2RX; CSF2RY; GM-CSF-R-alpha; GMCSFR; GMCSFR-alpha; GMR; GMR-alpha; SMDP4
Mammalian Cell Selection:	Neomycin
Vector:	pCMV6-AC-GFP (PS100010)
E. coli Selection:	Ampicillin (100 ug/mL)



[View online »](#)

ORF Nucleotide Sequence:

>RG215857 representing NM_006140
 Red=Cloning site Blue=ORF Green=Tags(s)

TTTTGTAATACGACTCACTATAGGGCGGCCGGAATTCGTCGACTGGATCCGGTACCGAGGAGATCTGCC
 GCC**CGGATCGCC**

ATGCTTCTCCTGGTGACAAGCCTTCTGCTCTGTGAGTTACCACACCCAGCATTCTCTGATCCCAGAGA
 AATCGGATCTGCGAACAGTGGCACCAGCCTCTAGTCTCAATGTGAGGTTTGACTCCAGGACGATGAATTT
 AAGCTGGGACTGCCAAGAAAACACAACCTTCAGCAAGTGTTCCTTAAGTACAAGAAAGAACAGAGTCGTG
 GAACCCAGGCTCAGTAACAACGAATGTTTCGTGCACATTTTCGTGAAATTTGTCTGCATGAAGGAGTCACAT
 TTGAGGTTACGTGAATACTAGTCAAAGAGGATTTCAACAGAACTGCTTTATCCAAATTCAGGAAGGGA
 GGGTACCGCTGCTCAGAATTTCTCTGTTTCATCTACAATGCGGATTTAATGAACGTACCTGGGCGAGG
 GGTCCGACGGCCCCCGTACGTCCAGTATTTTTGTACATACGAACTCAAAGAGAAGGAGGGAGATCC
 GGTGTCTTATTACATAAAGACTCAGGAACCCATGTGGGATGTCACCTGGATAACCTGTCAGGATTAAC
 GTCTCGCAATTACTTTCTGGTTAACGGAACCCAGCCGAGAAATGGCATCCAATTCCTTTGATTCACATTTG
 GACACAAAGAAAATAGAAGATTCAACCTCCCAGCAATGTCACCGTACGTTGCAACACGACGCACTGCC
 TCGTACGGTGAAACAGCCCAGGACCTATCAGAAGCTGTCGTACCTGGACTTTCAGTACCAGCTGGACGT
 CCACAGAAAGAATACCCAGCCTGGCAGGAAAACCTACTGATTAATGTTTCTGGTGATTTGGAAAATAGA
 TACAATTTCCAAGCTCTGAGCCAGAGCAAAACACAGTGTGAAGATCAGAGCTGCAGACGTCCGCATCT
 TGAATTGGAGCTCCTGGAGTGAAGCCATTGAATTTGGTCTGACGACGGGAACCTCGGCTCTGTGTACAT
 TTATGTCTCCTAATCGTGGAAACCTTGTCTGTGGCATCGTCTCGGCTTCTCTTTAAAGGTTCCCT
 AGGATACAGCGGCTGTTCCCGCCAGTCCACAGATCAAAGACAACTGAATGATAACCATGAGGTGGAAG
 ACGAGATCATCTGGGAGGAATTCACCCAGAGGAAGGAAAGGCTACCGCGAAGAGGTCTTGACCGTGAA
 GGAAATTACC

ACGCGTACGCGGCCGCTCGAG - GFP Tag - GTTTAA

Protein Sequence:

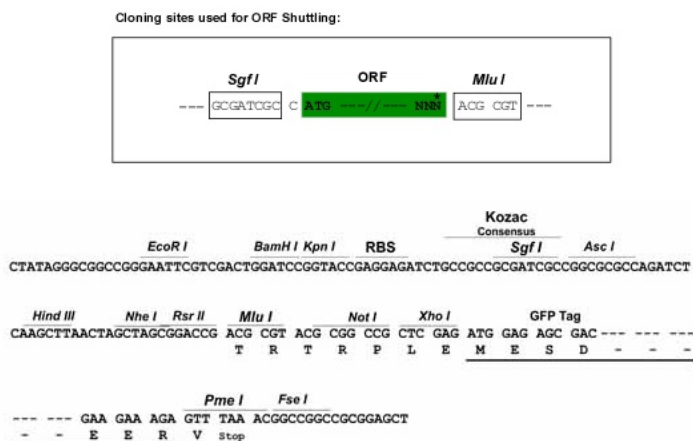
>RG215857 representing NM_006140
 Red=Cloning site Green=Tags(s)

MLLLVTSLLLCELPHPAFLLIPEKSDLRTVAPASSLNVRFDSTMNLSWDCQENTTFSKCFLTDKKNRVV
 EPRLSNNECSCTFREICLHEGVTFEVHVNTSQRGFQKLLYPNSGREGTAAQNFSCFIYNADLMNCTWAR
 GPTAPRDVQYFLYIRNSKRREIRCPYYIQDSGTHVGCHLDNLSGLTSRNYFLVNGTSREIGIQFFDSL
 DTKKIERFNPPSNVTVRCNTTHCLVRWKQPRTYQKLSYLDYQYQLDVHRKNTQPGTENLLINVSGLLENR
 YNFPSSSEPRAKHSVKIRAADVRLNWSWSEAIIEFGSDDGNLGSVYIYVLLIVGTLVCGIVLGFLFKRFL
 RIQRLFPVPVQIKDKLNDNHEVEDEIIWEEFTPEEGKGYREEVLTVKEIT

TRTRPLE - GFP Tag - V

Restriction Sites:

SgfI-MluI

Cloning Scheme:


ACCN: NM_006140

ORF Size: 1200 bp

OTI Disclaimer: The molecular sequence of this clone aligns with the gene accession number as a point of reference only. However, individual transcript sequences of the same gene can differ through naturally occurring variations (e.g. polymorphisms), each with its own valid existence. This clone is substantially in agreement with the reference, but a complete review of all prevailing variants is recommended prior to use. [More info](#)

OTI Annotation: This clone was engineered to express the complete ORF with an expression tag. Expression varies depending on the nature of the gene.

Components: The ORF clone is ion-exchange column purified and shipped in a 2D barcoded Matrix tube containing 10ug of transfection-ready, dried plasmid DNA (reconstitute with 100 ul of water).

Reconstitution Method:

1. Centrifuge at 5,000xg for 5min.
2. Carefully open the tube and add 100ul of sterile water to dissolve the DNA.
3. Close the tube and incubate for 10 minutes at room temperature.
4. Briefly vortex the tube and then do a quick spin (less than 5000xg) to concentrate the liquid at the bottom.
5. Store the suspended plasmid at -20°C. The DNA is stable for at least one year from date of shipping when stored at -20°C.

RefSeq: [NM_006140.6](#)

RefSeq Size: 1844 bp

RefSeq ORF: 1203 bp

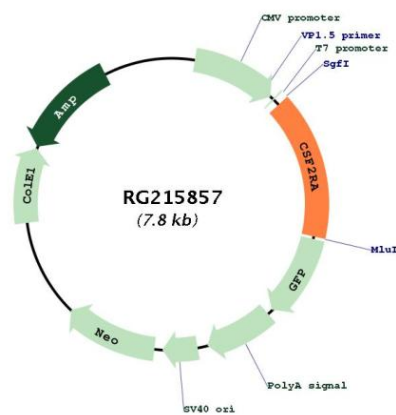
Locus ID: 1438

UniProt ID: [P15509](#)

Cytogenetics: X;Y

Protein Families:	Druggable Genome, Secreted Protein, Transmembrane
Protein Pathways:	Cytokine-cytokine receptor interaction, Hematopoietic cell lineage, Jak-STAT signaling pathway, Pathways in cancer
Gene Summary:	The protein encoded by this gene is the alpha subunit of the heterodimeric receptor for colony stimulating factor 2, a cytokine which controls the production, differentiation, and function of granulocytes and macrophages. The encoded protein is a member of the cytokine family of receptors. This gene is found in the pseudoautosomal region (PAR) of the X and Y chromosomes. Multiple transcript variants encoding different isoforms have been found for this gene, with some of the isoforms being membrane-bound and others being soluble. [provided by RefSeq, Jul 2008]

Product images:



Circular map for RG215857