

Product datasheet for **RG215848**

SIGLEC15 (NM_213602) Human Tagged ORF Clone

Product data:

Product Type:	Expression Plasmids
Product Name:	SIGLEC15 (NM_213602) Human Tagged ORF Clone
Tag:	TurboGFP
Symbol:	SIGLEC15
Synonyms:	CD33L3; HsT1361; SIGLEC-15
Mammalian Cell Selection:	Neomycin
Vector:	pCMV6-AC-GFP (PS100010)
E. coli Selection:	Ampicillin (100 ug/mL)
ORF Nucleotide Sequence:	>RG215848 representing NM_213602 Red=Cloning site Blue=ORF Green=Tags(s)

TTTTGTAATACGACTCACTATAGGGCGGCCGGAATTCGTCGACTGGATCCGGTACCGAGGAGATCTGCC
GCC**CGATCGCC**

ATGAAAAGTCCATCTGGCTGCTGGCCTGCTTGGCGTGGGTTCTCCCGACAGGCTCATTGTGAGAACTA
AAATAGATACTACGGAGAACTTGCTCAACACAGAGGTGCACAGCTCGCCAGCGCAGCGCTGGTCCATGCA
GGTGCCACCCGAGGTGAGCGCGGAGGCAGGCGACGCGGCAGTGTGCCCTGCACCTTCACGCACCCGCAC
CGCCACTACGACGGCCGCTGACGGCCATCTGGCGCGGGGCGAGCCCTATGCGGGCCCGCAGGTGTTCC
GCTGCGCTGCGGGCGGGGCGAGGCTCTGCCAGACGGCGCTGAGCCTGCACGGCCGCTTCCGGCTGCT
GGGCAACCCGCGCCGCAACGACCTCTCGCTGCGGTGAGCGCCTCGCCCTGGCTGACGACCGCCGCTAC
TTCTGCCGCGTGCAGTTCGCCGGCGACGTCATGACCGCTACGAGAGCCGCCACGGCGTCCGGCTGCACG
TGACAGCCGCGCCGCGGATCGTCAACATCTCGGTGCTGCCAGTCCGGCTCACGCCTTCCGCGCGCTCTG
CACTGCCGAAGGGGAGCCGCCGCCCGCCCTCGCCTGGTCCGGCCCGCCCTGGGCAACAGCTTGGCAGCC
GTGCGGAGCCCGGTGAGGGTACGCGCCACCTAGTGACCGCCGAAGTCCCGCACTGACCCATGACGGCC
GCTACACGTGTACGGCCCAACAGCCTGGGCCGCTCCGAGGCCAGCGTCTACCTGTTCCGCTTCCATGG
CGCCAGCGGGGCTCGACGGTCCGCTCCTGCTCGGCGCTCTCGGCTTCAAGGCGCTGCTGCTGCTCGGG
GTCTTGGCCGCCCGCTGCCCGCCGCCAGAGCATCTGGACACCCCGGACACCCACCACCGTCCC
AGGCCAGGAGTCCAATTATGAAAATTTGAGCCAGATGAACCCCGGAGCCACCAGCCACCATGTGCTC
ACCG

ACGCGTACGCGGCCGCTCGAG - GFP Tag - GTTTAA



[View online »](#)

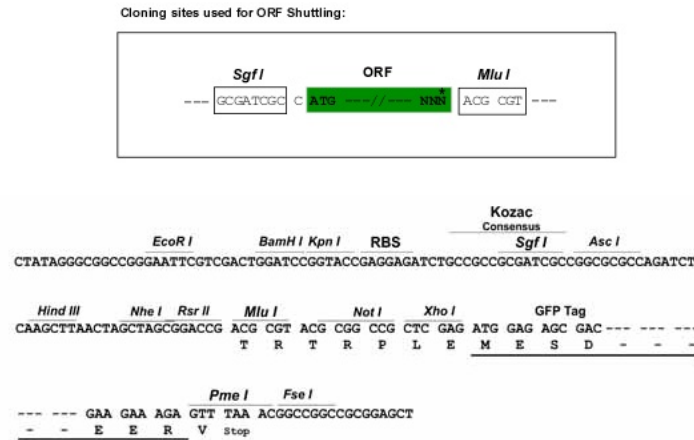
Protein Sequence: >RG215848 representing NM_213602
 Red=Cloning site Green=Tags(s)

MEKSIWLLACLAWVLP TGSFVRTKIDTTENLLNTEVHSSPAQRWSMQVPPEVSAEAGDAAVLPCTFTHPH
 RHYDGPLTAIWRAGEPYAGPQVFRCAAARGSEL CQTALSLHGRFRLLGNPRRNDLSLRVERLALADDRRY
 FCRVEFAGDVHDRYESRHGVRLHVTAAPRIVNISVLPSPAHAFRALCTAEGEPPPALAWSGPALGNSLAA
 VRSPREGHGLVTAELPALTHDGRYTCTAANSLGRSEASVYLFRLFHAGSGASTVALLL GALGFKALLLLG
 VLAARAARRRPEHL DTPDTPPRSQAQESNYENLSQMNPSPPTMCS P

TRTRPLE - GFP Tag - V

Restriction Sites: SgfI-MluI

Cloning Scheme:



ACCN: NM_213602

ORF Size: 984 bp

OTI Disclaimer: The molecular sequence of this clone aligns with the gene accession number as a point of reference only. However, individual transcript sequences of the same gene can differ through naturally occurring variations (e.g. polymorphisms), each with its own valid existence. This clone is substantially in agreement with the reference, but a complete review of all prevailing variants is recommended prior to use. [More info](#)

OTI Annotation: This clone was engineered to express the complete ORF with an expression tag. Expression varies depending on the nature of the gene.

Components: The ORF clone is ion-exchange column purified and shipped in a 2D barcoded Matrix tube containing 10ug of transfection-ready, dried plasmid DNA (reconstitute with 100 ul of water).

Reconstitution Method:

1. Centrifuge at 5,000xg for 5min.
2. Carefully open the tube and add 100ul of sterile water to dissolve the DNA.
3. Close the tube and incubate for 10 minutes at room temperature.
4. Briefly vortex the tube and then do a quick spin (less than 5000xg) to concentrate the liquid at the bottom.
5. Store the suspended plasmid at -20°C. The DNA is stable for at least one year from date of shipping when stored at -20°C.

RefSeq: [NM_213602.3](#)

RefSeq Size: 1523 bp

RefSeq ORF: 987 bp

Locus ID: 284266

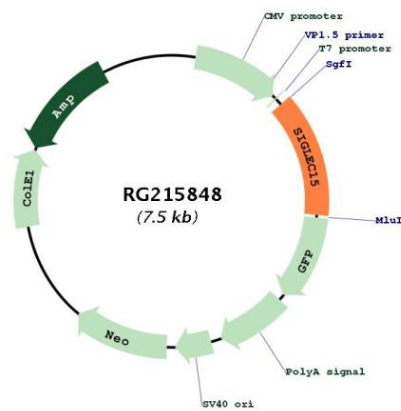
UniProt ID: [Q6ZMC9](#)

Cytogenetics: 18q12.3

Protein Families: Transmembrane

Gene Summary: Binds sialylated glycoproteins.[UniProtKB/Swiss-Prot Function]

Product images:



Circular map for RG215848