

Product datasheet for **RG215787**

PDE4DIP (NM_001002811) Human Tagged ORF Clone

Product data:

Product Type: Expression Plasmids
Product Name: PDE4DIP (NM_001002811) Human Tagged ORF Clone
Tag: TurboGFP
Symbol: PDE4DIP
Synonyms: CMYA2; MMGL
Mammalian Cell Selection: Neomycin
Vector: pCMV6-AC-GFP (PS100010)
E. coli Selection: Ampicillin (100 ug/mL)
ORF Nucleotide Sequence: >RG215787 representing NM_001002811
Red=Cloning site Blue=ORF Green=Tags(s)

TTTTGTAATACGACTCACTATAGGGCGGCCGGAATTCGTCGACTGGATCCGGTACCGAGGAGATCTGCC
 GCCCGATCGCC

ATGAAGGAGATTTGCAGGATCTGTGCCGAGAGCTGTGTGAAACCAGCGCGCTGGATCTCCACACGG
 CGTCCAAGCTCAATCTCCAGTTCTGCTTCGCACGTCTGGCAAGGATGTCCCGCGATGGCAAAGC
 CGAGTTCGCTTGACGCAAGTGTCTTTCATGCTTGATCGAATCTATCGATTGACACAGTTATTGCCGG
 ATTGAAGCGCTTCTATTGAGCGCTTGCAAAGCTGCTACTGGAGAAGGATCGCCTCAAGTTCTGCATTG
 CCAGTATGTATCGGAAGAATAACGATGACTCTGGCGCGGAGATCAAGCGGGGAATGGGACGGTTGACAT
 GTCCGTCTTACCCGATGCGAGATACTCTGCACTGCTCCAGGAGGACTTCGCCTATTCAGGGTTTGTAGTGC
 TGGGTGGAGAATGAGGATCAGATCCAGGAGCCACACAGCTGCCATGGTTCAGAAGGCCCTGGAAACCGAC
 CCAGGAGATGCCGTGGTTGTGCCGCTTTCGCGGTTGCTGATTCTGACTATGAAGCCATTTGTAAGGTACC
 TCGAAAGGTGGCCAGAAGTATCTCCTGCGGCCCTTCTAGCAGGTGGTTCGACCAGCATTGCACTGAAGAA
 CCAGCGTTGTCTGAGGTTGGCCACCCGACTTAGCAAGCACAAGGTACCCAGATGGAGAAAGCATGG
 AGAAGAGACGCCTGGTTCCCTCTGTGGAATCTTTGGATGCAAGCGTCCAGGCTAGCCCTCCACAACAGAA
 AGATGAGGAGACTGAGAGAAGTGCAAAGAACTGGAAAGTGTACTGTTGTTTCAGATGATCAGGCTCCG
 CAGCATGGGTGTAATCACAAGCTGGAATTAGCTTTAGCATGATTAAGGTCTTGATTATAAGCCCATCC
 AGAGCCCCGAGGAGCAGGCTTCCGATTCCAGTGAAATCCAGCCTACCTGGAGCCAAGCCTGGCCCTAG
 CATGACAGATGGAGTTAGTTCGGTTTCCCTAACAGGTCTTTGAAACCCCTTACAAAGACACCTGTGAGT
 TATCCCTTGGAGCTTTCAGACCTGCAGGAGCTGTGGGATGATCTCTGTGAAGATTATTTGCCGCTCCGGG
 TCCAGCCCATGACTGAAGAGTTGCTGAAACAACAAAAGCTGAATTCACATGAGACCACTATAACTCAGCA
 GTCTGTATCTGATTCCCCTTGGCAGAACTCCAGGAAAAAATCCAGCAAACAGAGGCCACCAACAAGATT
 CTTCAAGAGAACTTAATGAAATGAGCTATGAACTAAAGTGTGCTCAGGAGTCGTCTCAAAGCAAGATG
 GTACAATTCAGAACCTCAAGGAACTCTGAAAAGCAGGGAACGTGAGACTGAGGAGTTGTACCAGGTAAT
 TGAAGGTCAAATGACACAATGGCAAAGCTTCGAGAAATGCTGCACCAAAGCCAGCTTGACAACCTCAC



[View online »](#)

AGCTCAGAGGGTACTTCTCCAGCTCAGCAACAGGTAGCTCTGCTTGATCTTCAGAGTGCTTTATTCTGCA
 GCCAACTTGAAATACAGAAGCTCCAGAGGGTGGTACGACAGAAAGAGCGCCAACCTGGCTGATGCCAAACA
 ATGTGTGCAATTTGTAGAGGCTGCAGCACACGAGAGTGAACAGCAGAAAGAGGCTTCTTGAAACATAAC
 CAGGAATTGCGAAAAGCCTTGCAGCAGCTACAAGAAGAATTGCAGAATAAGAGCCAACAGCTTCGTGCT
 GGGAGGCTGAAAAATACAATGAGATTGAAACCCAGGAACAAAACATCCAGCACCTAAACCATAGTCTGAG
 TCACAAGGAGCAGTTGCTTCAGGAATTTGCGGAGCTCTACAGTATCGAGATAACTCAGACAAAACCTT
 GAAGCAAATGAAATGTTGCTTGAGAAACTTCGCCAGCGAATACATGATAAAGCTGTTGCTCTGGAGCGGG
 CTATAGATGAAAAATTCTGCTCTAGAAGAGAAAAAAGAAGAACTGCGCCAGCTTCGTCTTCTGCTGAG
 AGAGCGAGATCATGACTTAGAGAGACTGCGCGATGTCCTCTCCTCCAATGAAGCTACTATGCAAAGTATG
 GAGAGTCTCTGAGGGCCAAAGGCTGGAAGTGGAAACAGTTATCTACTACCTGTCAAACCTCCAGTGCC
 TGAAAGAAGAAATGGAACCAAATTTAGCCGTTGGCAGAAGGAACAAGAGAGTATCATTACGAGTTACA
 GACGTCTCTTATGATAGGAACAAAGAAGTGGAGGATCTTAGTGCACACTGCTCTGCAAACCTGGACCA
 GGGCAGAGTGAGATAGCAGAGGAGCTGTCCAGCGTCTACAGCGAAAGGAAAGGATGCTGCAGGACCTTC
 TAAGTGATCGAAATAACAAGTGTGGAACATGAAATGGAGATTAAGGCCTGCTTCAGTCTGTGAGCAC
 CAGGGAGCAGGAAAGCCAAGCTGCTGCAGAGAAGTTGGTCAAGCCTTAATGGAAAGAAATTCAGAATTA
 CAGGCCCTGCGCCAATATTTAGGAGGGAGAGACTCCCTGATGTCCAAGCACCCATCTTAACCAACAAG
 CTGAAGTTACCCCACTGGCTGTCTTGGAAAACAGACTGATCAAGTTCAATGCAGATACCTTCCAGAGA
 TGATAGCACTTCAATTGACTGCCAAAGAGGATGTCAGCATACCCAGATCCACATTAGGAGACTTGGACACA
 GTTGCCAGGGCTGGAAAAAGAACTGAGTAATGCCAAAGAGGAACTTGAACCTCATGGCTAAAAAAGAAAGAG
 AAAGTCAGATGGAACCTTCTGCTCTACAGTCCATGATGGCTGTGCAGGAAGAAGAGCTGCAGGTGCAGGC
 TGCTGATATGGAGTCTCTGACCAGAACATACAGATTAAGAAGATCTCATAAAGGACCTGCAATGCAA
 CTGGTTGATCCTGAAGACATACCAGCTATGGAACGCTGACCCAGGAAGTCTTACTTCTCGGAAAAAG
 TTGCTTCAGTAGAATCCAGGGTCAAGAAATTTAGGAAACCGAAGACAACAGTTGCTGCTGATGCTAGA
 AGGACTAGTAGATGAACGAGTCCGCTCAATGAGGCCTTACAAGCAGAGAGACAGTCTATAGCAGTCTG
 GTGAAGTTCCATGCCATCCAGAGAGCTCTGAGAGAGACCGAACTCTGCAGGTGGAAGTGGAAAGGGCTC
 AGGTGTTACGCAGTCCGCTAGAAGAAGTTCTTGGAAAGCTTGGAGCGCTTAAACAGGCTGGAGACCT
 GGCCGCCATTGGAGGTGCAGCTGCAGGGGATGACACCGAAGATACAAGCACTGAGTTCAGTACAGTATT
 GAGGAGGAGGCTGCACACCATAGTACCAGCAACTA

ACGCGTACGCGGCCGCTCGAG – GFP Tag – GTTTAA

Protein Sequence:

>RG215787 representing NM_001002811
 Red=Cloning site Green=Tags(s)

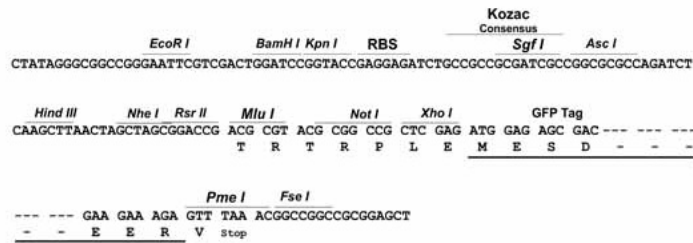
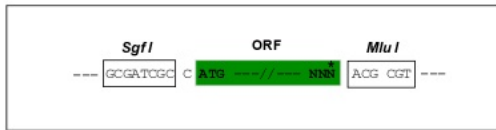
MKEICRICARELCGNQRRWIFHTASKLNLQVLLSHVLGKDVPRDGKAEFACSKCAFMLDRIYRFDTVIAR
 IEALSIERLQKLLLEKDRKFCIASMYRKNDDSGAEIKAGNGTVDMSVLPDARYSALLQEDFAYSGFEC
 WVENEDQIQEPHSCHGSEGPNGRPRRCGCAALRVADSDYEAICKVPRKVARISICGPSSRWSTSICTEE
 PALSEVGPPDLASTKVPPDGESMEEETPGSSVESLDASVQASPPQKDEETERSAKELGKDCSSDDQAP
 QHGCNHLKLELALSMIKGLDYKPIQSPRGSRLPIPVKSSLPGAKGPSMTDGVSSGFLNRSKLPKYKTPVS
 YPLELSDLQELWDDLCEYLPLRVQPMTEELLKQKLNHSHETTITQQSVSDSHLAELQEIKIQTEATNKI
 LQEKLNEMSYELKCAQESSQKQDGTIQNLKETLKSRETEELYQVIEGQNDMAKLREMLHQSQGLQLH
 SSEGTSPAQQVALLDLQSALFCSQLEIQKLQRVVRQKERQLADAKQCVQFVEAAHSESEQKEASWKHN
 QELRKALQQLQEELQNKSQQLRAWAEKYNEIRTQEQNIQHLNHSLSHKEQLLQEFRELLQYRDNSDKTL
 EANEMLLEKLRQRIHDKAVALERAIDEKFSALEEKEKELRQLRLAVRERDHLERLRLDVLSSNEATMQSM
 ESLLRAKGLEVEQLSTTCQNLQWLKEEMETKFSRWQKEQESIQQQLQTLHNRNKEVEDLSATLLCKLGP
 GQSEIAEELCQRLQRKERMLQDLLSDRNKQVLEHEMIEIQGLLQSVSTREQESQAAAELVQALMERNSEL
 QALRQYLGGDRSLMSQAPIISNQAEVTPGCLGKQTDQGSMPQIPSRDDSTSLTAKEDVSIIPRSTLDLDT
 VAGLEKELSLAKEELMAKKERESQMEALSALQSMMAVQEEELVQQAADMESLTRNIQIKEDLIKDLQMQ
 LVDPEDIPAMERLTQEVLLLREKVASVESQGEISGNRRQQLLLMLEGLVDERSRLNEALQAERQLYSSL
 VKFHAPHPESSERDRTLQVELEGAQVLRSLREEVLGRSLERLNRLETLAAIGGAAAGDDTETDSTEFDTSI
 EEEAAHSHQQL

TRTRPLE – GFP Tag – V

Restriction Sites: SgfI-MluI

Cloning Scheme:

Cloning sites used for ORF Shuttling:

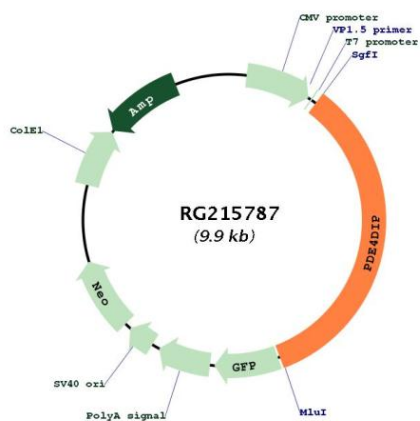


ACCN: NM_001002811

ORF Size: 3396 bp

OTI Disclaimer:	<p>Due to the inherent nature of this plasmid, standard methods to replicate additional amounts of DNA in E. coli are highly likely to result in mutations and/or rearrangements. Therefore, OriGene does not guarantee the capability to replicate this plasmid DNA. Additional amounts of DNA can be purchased from OriGene with batch-specific, full-sequence verification at a reduced cost. Please contact our customer care team at custsupport@origene.com or by calling 301.340.3188 option 3 for pricing and delivery.</p> <p>The molecular sequence of this clone aligns with the gene accession number as a point of reference only. However, individual transcript sequences of the same gene can differ through naturally occurring variations (e.g. polymorphisms), each with its own valid existence. This clone is substantially in agreement with the reference, but a complete review of all prevailing variants is recommended prior to use. More info</p>
OTI Annotation:	This clone was engineered to express the complete ORF with an expression tag. Expression varies depending on the nature of the gene.
Components:	The ORF clone is ion-exchange column purified and shipped in a 2D barcoded Matrix tube containing 10ug of transfection-ready, dried plasmid DNA (reconstitute with 100 ul of water).
Reconstitution Method:	<ol style="list-style-type: none"> 1. Centrifuge at 5,000xg for 5min. 2. Carefully open the tube and add 100ul of sterile water to dissolve the DNA. 3. Close the tube and incubate for 10 minutes at room temperature. 4. Briefly vortex the tube and then do a quick spin (less than 5000xg) to concentrate the liquid at the bottom. 5. Store the suspended plasmid at -20°C. The DNA is stable for at least one year from date of shipping when stored at -20°C.
RefSeq:	<u>NM_001002811.1</u> , <u>NP_001002811.1</u>
RefSeq Size:	5355 bp
RefSeq ORF:	3399 bp
Locus ID:	9659
UniProt ID:	<u>Q5VU43</u>
Cytogenetics:	1q21.2
Gene Summary:	The protein encoded by this gene serves to anchor phosphodiesterase 4D to the Golgi/centrosome region of the cell. Defects in this gene may be a cause of myeloproliferative disorder (MBD) associated with eosinophilia. Several transcript variants encoding different isoforms have been found for this gene. [provided by RefSeq, Aug 2010]

Product images:



Circular map for RG215787