

Product datasheet for **RG215754**

MED15 (NM_001003891) Human Tagged ORF Clone

Product data:

| | |
|---------------------------|---|
| Product Type: | Expression Plasmids |
| Product Name: | MED15 (NM_001003891) Human Tagged ORF Clone |
| Tag: | TurboGFP |
| Symbol: | MED15 |
| Synonyms: | ARC105; CAG7A; CTG7A; PCQAP; TIG-1; TIG1; TNRC7 |
| Mammalian Cell Selection: | Neomycin |
| Vector: | pCMV6-AC-GFP (PS100010) |
| E. coli Selection: | Ampicillin (100 ug/mL) |



[View online »](#)

ORF Nucleotide
Sequence:

>RG215754 representing NM_001003891
Red=Cloning site Blue=ORF Green=Tags(s)

TTTTGTAATACGACTCACTATAGGGCGGCCGGGAATTCGTCGACTGGATCCGGTACCGAGGAGATCTGCC
GCCCGCATCGCC

ATGGACGTTTCCGGCAAGAGACCGACTGGCGGAGACCCTTCCGGCAGAAGCTGGTCAGTCAAATCG
AGGATGCCATGAGGAAAGCTGGTGTGGCACACAGTAAATCCAGCAAGGATATGGAGAGCCATGTTTTCT
GAAGGCCAAGACCCGGGACGAATACCTTCTCTCGTGGCCAGGCTCATTATCCATTTTCGAGACATTCAT
AACAGAATCTCAAGCTTCCGTCAGTATCTATGAATGCACTCCAGAGCCTGACTGGCGGACCTGCTG
CGGGAGCCGCTGGAATTGGCATGCCTCCTCGGGGCCGGGACAGTCTCTGGGCGGGATGGGTAGCCTTGG
TGCCATGGGACAGCCAATGTCTCTCTCAGGGCAGCCGCTCCTGGGACCTCGGGGATGGCCCTCACAGC
ATGGCTGTCGTGTCTACGGCACTCCACAGACCCAGTGCAGTCCAGCAGGTGGCGCTGCAGCAGCAGC
AGCAACAGCAGCAGTCCAGCAGCAGCAGCAGGCGCGCTACAGCAGCAGCAGCAGCAGCAACAGCA
GCAGTTCAGGCTCAGCAGAGTCCATGCAGCAGCAGTCCAAGCAGTAGTGCAGCAGCAGCAGCAGCTC
CAGCAGCAGCAGCAGCAGCAGCAGCATTAATTAATGATCATCAAAATCAGCAACAGATACAGCAGC
AGCAACAGCAGCTGCAGCGAATAGCACAGCTGCAGCTCCAACAACAGCAACAGCAGCAGCAGCAGCA
GCAGCAGCAGCAGCAGGCTTTGCAGGCCAGCCACCAATTCAGCAGCCACCGATGCAGCAGCCACAGCCT
CCGCCCTCCCAGGCTCTGCCCCAGCAGTGCAGCAGATGCATCACACACAGCACCACCCAGCCGCCACCAC
AGCCCCAGCAGCTCCAGTTGCTCAGAACAACCATCACAACCTCCCGCCACAGTCGCAGACCCAGCCTTT
GGTGTACAGGCGCAAGCTCTCCCTGGACAAATGTTGTATACCAACCACCACTGAAATTTGCCGAGCT
CCGATGGTGGTGCAGCAGCCCCAGTGCAGCCCCAGGTGCAGCAGCAGCAGCAGCAGCAGTACAGACAGCTC
AGGTGCCCAGATGGTGGCTCCCGGAGTCCAGATGATCACGGAAGCCTTGGCCCCAAGGTGGGATGCACAT
AAGAGCCCGGTTCCCGCCTACCACCGCTGTGTCCGCCATCCCGTCAAGCTCCATCCCTTTGGGCAGACAG
CCCATGGCACAGGTGAGCCAGAGCAGCCTCCCCATGCTGTCTCGCCGTACCCGGCCAGCAGGTGCAGA
CCCCGAGTCGATGCCCCCTCCCCCAGCCGTCGCCGACCCGGCCAGCCAGCTCACAGCCCAACTC
CAACGTGAGCTCTGGCCCTGCCCATCTCCAGTAGCTTCTGCCAGCCCTCACCGCAGCCCTCCAG
AGCCAGTGACGGCGCGGACCCACAGAACTTCAGTGTCCCTCACCTGGACCTTTAAACACACCTGTGA
ACCCAGCTCTGTATGAGCCAGCTGGCTCCAGCCAGGCTGAGGAGCAGCAGTACCTGGACAAGCTGAA
GCAGCTGTGAAGTACATCGAGCCCTGCGCCGATGATCAACAAGATCGACAAGAACGAAGACAGAAAA
AAGGACCTGAGTAAGATGAAGAGCCTTCTGGACATTCTGACAGACCCCTCGAAGCGGTGTCCCTGAAGA
CCTTGAAAAGTGTGAGATCGCCCTGGAGAACTCAAGAATGACATGGCGGTGCCACTCCCCACCGCC
CCCGGTGCCACCGACAAACAGCAGTACCTATGCCAGCCGCTCCTGGATGCCGTCTGGCCAACATCCGC
TCACCTGTCTTAACATTCCCTGTACCGCACATTCGTTCCAGCCATGACCGCCATTACGGCCACCCA
TCACGGCCCCAGTGGTGTGCACCCGGAAGCGCAGGCTTGGAGTATGAGCGGCAGAGCATCCCCAGTGT
GCTCCAGGGTGAAGTGGCCAGGCTGGACCCCAAGTTCTGGTAAACCTGGACCTTCTACTGCAGCAAC
AATGGCACTGTCCACTGATCTGCAAGCTGGATGACAAGGACCTCCAAGTGTGCCACCACTGGAGCTCA
GTGTGCCCGCTGACTATCCTGCCAAAGCCGCTGTGGATAGACCGGCAGTGGCAGTACGACGCCAACCC
CTTCTCCAGTCGGTGCACCGCTGCATGACCTCCAGGCTGCTGCAGCTCCCGGACAAGCACTCGGTACCC
GCCTTGCTCAACACCTGGGCCAGAGCGTCCACCAGGCTGCCTCTCAGCCGCC

ACGCGTACGCGGCCGCTCGAG - GFP Tag - GTTTAA

Protein Sequence: >RG215754 representing NM_001003891
 Red=Cloning site Green=Tags(s)

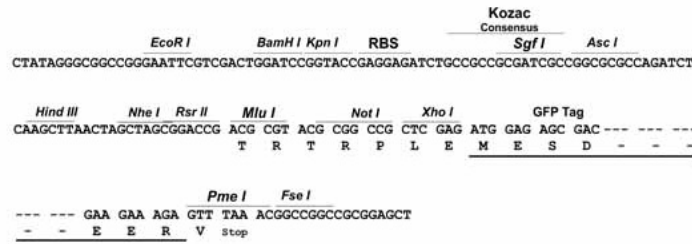
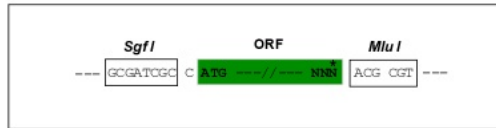
```
MDVSGQETDWRSTAFRQKLVSQIEDAMRKAGVAHSKSSKDMESHVFLKAKTRDEYLSLVARLIIHFRDIH
NKKSQASVSDPMNALQSLTGGPAAGAAGIGMPPRGPQSLGGMGSLGAMGQPMLSGQPPPSTSGMAPHS
MAVVSTATPQTQLQLQQVALQQQQQQQFQQQQQAALQQQQQQQQQQFQAQSSAMQQQFQAVVQQQQQL
QQQQQQQHLIKLHHQNNQQIQQQQQQLORIAQLQLQQQQQQQQQQQQQQALQAQPPIQPPMQPQP
PPSQALPQQLQQMHHTQHHQPPPPQPPVAQNQPSQLPPQSQTQPLVSAQAALPGQMLYTPPLKFVRA
PMVVQQPPVQPVQQQTAVQTAQAAQMVAPGVQMITEALAQQGMHIRARFPPTTAVSAIPSSSIPLGRQ
PMAQVSQSSLPMLSSPSGQVQTPQSMPPPPQSPQPGQSSQPNVSSGPAPSPSSFLPSPSPQPSQ
SPVTARTPQNFVSPSPGLNTPVNPSSVMPAGSSQAEEQYLDKQSKYIEPLRRMINKIDKNEDRK
KDL SKMKSLLDILDPSKRCPLKTLQKCEIALEKLNKNDMAVPTPPPPVPPTKQYLCQPLLDVLANIR
SPVFNHSLYRTFVPAMTAIHGPPITAPVVCTRKRREDDERQSIPSVLQGEVARLDPKFLVNLDPHSCSN
NGTVHLICKLDDKDLPSVPPLELSPADYPAQSPLWIDRQWQYDANPFLQSVHRCMTRLLQLPKHSVT
ALLNTWAQSVHQACLSAA
```

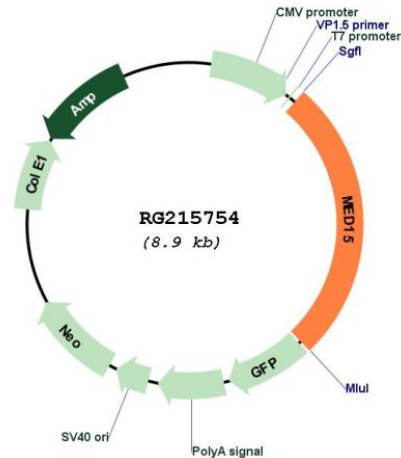
TRTRPLE - GFP Tag - V

Restriction Sites: SgfI-MluI

Cloning Scheme:

Cloning sites used for ORF Shuttling:



Plasmid Map:


ACCN: NM_001003891

ORF Size: 2364 bp

OTI Disclaimer: The molecular sequence of this clone aligns with the gene accession number as a point of reference only. However, individual transcript sequences of the same gene can differ through naturally occurring variations (e.g. polymorphisms), each with its own valid existence. This clone is substantially in agreement with the reference, but a complete review of all prevailing variants is recommended prior to use. [More info](#)

OTI Annotation: This clone was engineered to express the complete ORF with an expression tag. Expression varies depending on the nature of the gene.

Components: The ORF clone is ion-exchange column purified and shipped in a 2D barcoded Matrix tube containing 10ug of transfection-ready, dried plasmid DNA (reconstitute with 100 ul of water).

Reconstitution Method:

1. Centrifuge at 5,000xg for 5min.
2. Carefully open the tube and add 100ul of sterile water to dissolve the DNA.
3. Close the tube and incubate for 10 minutes at room temperature.
4. Briefly vortex the tube and then do a quick spin (less than 5000xg) to concentrate the liquid at the bottom.
5. Store the suspended plasmid at -20°C. The DNA is stable for at least one year from date of shipping when stored at -20°C.

RefSeq: [NM_001003891.3](#)

RefSeq Size: 3384 bp

RefSeq ORF: 2367 bp

Locus ID: 51586

UniProt ID: [Q96RN5](#)

Cytogenetics: 22q11.21

Protein Families: Druggable Genome, Transcription Factors

Gene Summary: The protein encoded by this gene is a subunit of the multiprotein complexes PC2 and ARC/DRIP and may function as a transcriptional coactivator in RNA polymerase II transcription. This gene contains stretches of trinucleotide repeats and is located in the chromosome 22 region which is deleted in DiGeorge syndrome. Alternative splicing results in multiple transcript variants. [provided by RefSeq, Jun 2014]