

Product datasheet for **RG215742**

ELYS (AHCTF1) (NM_015446) Human Tagged ORF Clone

Product data:

Product Type:	Expression Plasmids
Product Name:	ELYS (AHCTF1) (NM_015446) Human Tagged ORF Clone
Tag:	TurboGFP
Symbol:	AHCTF1
Synonyms:	ELYS; MST108; MSTP108; TMBS62
Mammalian Cell Selection:	Neomycin
Vector:	pCMV6-AC-GFP (PS100010)
E. coli Selection:	Ampicillin (100 ug/mL)
ORF Nucleotide Sequence:	>RG215742 representing NM_015446 Red=Cloning site Blue=ORF Green=Tags(s)

TTTTGTAATACGACTCACTATAGGGCGGCCGGAATTCGTCGACTGGATCCGGTACCGAGGAGATCTGCC
GCC**CGATCGCC**

ATGCGAGACTTAAGAGCTCAAGTGACTAGTGGTCTCCTGCCATTTCCAGAAGTGACTCTTCAAGCCCTTG
GAGAAGACGAAATAACATTAGAATCTGTGCTTCGTGGAAAGTTTCTGCAGGGAAAAATGGACTTGCTTG
CTTGGCTTGTGGTCCACAACCTTGAGGTAGTAACTCTATAACAGGAGAGCGATTGTCTGCTTACAGATTC
AGTGGAGTCAATGAACAGCCTCCTGTAGTTTTAGCTGTGAAAGAATTCTCTTGGCAGAAGAGAAGTGGAT
TATTAATAGGATTGGAAGAAACAGAAGGGAGTGTCTCTGTCTTTATGACCTTGGAAATATCAAAAGTAGT
TAAAGCAGTTGTTCTTCCGGAAGGGTAACAGCTATTGAACCTATAATTAATCATGGAGGAGCCAGTGCA
AGCACTCAGCATTACATCCAAGTCTGCGATGGCTTTTTGGAGTGGCAGCTGTGGTCACTGATGTTGGAC
AGATCCTTCTTGTGGACCTATGTTTGGATGACTTGTCAATCAAAATGAAGTTGAAGCATCAGATCT
TGAAGTTCTAACTGGTATCCCAGCTGAAGTACCACACATTAGAGAAAGTGAATGAGACAAGGGCGCCAT
CTGTGTTTCCAGTTAGTAAGTCCAACAGGAACAGCTGTTTCAACTCTTAGTTACATAAGCAGGACAAATC
AGCTTGTGTAGGTTTTCTGATGGCTATCTAGCACTTTGGAACATGAAAAGCATGAAAAGAGAATATTA
CATACAATTGAAAAGTGGACAAGTTCCTGTATATGCTGTCACTTTTCAAGAACCTGAGAATGATCCTCGG
AATTGCTGTTACTTGTGGCTGTTCACTACACAAGATAGTGAAGGGGATGTTTTGAGTTTGCATCTGC
TGCACTGGCCTTTGGTAATAGAAAGTGTGGCATCAGGACAAATCTTATATGAGGGGTTAGAATACTG
TGAAGAAAGATACACCCTGGACCTGACAGTGGCATGTTCCCTTTGAGGGGACAGACGAGTAATACCAAA
TTGTTGGGATGCCAGATATAGAGAAATTTTCGATCTCATGGTGACAGGGAGGAAGCGTGAATGAAGCTC
TATCGCCTGACACTAGTGTTCAGTCTTACCTGGCAGGTGAATATATATGGACAGGAAAGCCTTCTGT
ATATTTGGGGCTTTTGTATAAATCGTTGGTATCATGCACAAATGCCAGATTCGTTAAGTTCAGGAGAA
TATCTACATAATTGCTCTATTTTGCACGTGGTCACTGGAGTCTGTTGTAAGTAGGACTTCTCCACATG
GCATCTTGGATATATTAGTACATGAGAGAAGTTTAAATAGAGGAGTCCCTCCTTCATATCCACCTCCCGA
GCAGTTTTTAATCCAAGCACTATAATTTTGTGCCACTGTTTGTAAACTCGGGAGTGTTCATTTA



[View online »](#)

ACTTGTACTGGCTTTCAGAAGGAGACTTTGACTTTTTAAAGAAATCAGGTCCATCACTCAATGAECTCA
 TTCCTGATGGTTAATAATCGATGTCTGTAGCTGGCCTTCTTCCCAAGATTTGTTGATGTTTCAGCCTTC
 CAGTTTAAAGCAAGAAGAACAGTTAGAAGCTATATTGTCAGCAGCAATTCAGACTAGTCCCTGGGACTT
 TTGACTGGTTATATCCGAAGATGGATAACAGAAGAACAACCAATTTGCCACTAATTTGCGCTTTGTTCC
 TTGAATGGACGTGGAATAAAGTGGTCTCACAAAAGAGGAATTTGACAGACTATGTGTGCCATTATTTGA
 TGGTTCGTGTCAATTCATGGATCCACAACTATACAGTCTATCCAGCAATGCTATTTGCTTCTTAGCAAT
 CTTAATAATAGTCTTGAGCTGTTTTGCATCAGAAGCCCGAGAGATCACTGAGAGAGGACTGATAGACTTAA
 GCAATAAGTTTTGGTTTTCCACCTCATCTGTGATGACACAAGTGGTCTTTGGTCTCTCATTCTGG
 GCTTTTACCAGAAGGCATAGATGATTCTGTGCAAGTTATGCTACAACCTACCCTGTAATTCAG
 AACTACTACACCAGTCGTCGACAGAAGTTTGGCGTTTATCAAGAGGGAAGTGGAAATCCCGATTGCTTGA
 TGATTGATGGACTGGTTTCTCAGTTAGGAGAGCGAATTGAGAAGTTGGGAAACGAGATGAAGGAGGCAC
 AGGAAAATATCCTCCTGCTAGTCTGCATGCAGTACTTGATATGTACCTATTAGACGGCGTACTGAAGCA
 GCCAAACTCTATTACCATTTATTTGCTACTTGATATTATGATTCTTTCCCAACAAAACAGACTC
 CCATTGAATCTTTCCCACTGTATTTGCCATTTCTGGGGCCAAGTTAACTTATTCAGGGGTTTTGGTT
 GATAGATCATAATGACTATGAGAGTGGTTGGATCTTTTGTTCATCCAGCTACTGCAAAACCTTTGTCA
 TGGCAACATTCAAAGATTATTCAGGCATTCATGAGTCAGGGCGAGCACAGACAAGCCCTCAGATATATTC
 AGACAATGAAGCCAACAGTGTCCAGTGGTAACGATGTTATCCTTACCTCACTGTTTTGCTTTTTAATAG
 GTGATAGTTGAAGCCTGGAAATTTTTGCGGCAACATTGCAATAGGTTGAATATAGAGGAGTTACTGAAG
 CACATGTATGAAGTCTGTGAGGAAATGGCTTGATGGAAGATTTACTGAAGTTACCATTTACAGACTG
 AGCAGGAATGTTAGTGAATTTTTGCAGTCCAGTGCCAGCGTTCAGAATCATGAATTCCTTTAGTGCA
 CCATTTGCAGCGTGCCAATATGTGCCTGCCTGAAGCTGAACCAAACTCTGAAGATTAATGTTATGAAT
 GATCGTGATCCTCGTTTTGCGGGAGAGATCACTGGCTCGAAATCTATATTAGACCAGTATGAAAAATCC
 TTCCTAGAGTCCATCGAAAATTAGCCATTGAACGAGCTAAGCCTTATCATCTGTCAACATCATGTTTT
 TCGATTAGTTTTAGACCCAAACCATTATCAGCAGTTCCAAAGCAAGTTGTAACAGGAACGTGTGTGACA
 AGATCTGTTTTCATCAACAATGTGTTATCTAAAATTGGAGAAGTTTGGGCAAGCAAGAACCTATAAATA
 GCACCACACCTTTCAATAGTTCTAAAATAGAAGAACCATCTCCTATAGTGTATTGCTCCAGCTCCAGA
 GCTGCCTGAGGCATTTTTTGAACACCAATTTCAAAGCATCACAAAAATTTCTAGACTGCTAGATTTG
 GTTGTTCAGCCTGTCCCGGCTTCTCAGTGTTCGGAGTTTATTCAGCAAAGCTCCATGAATCTCCTT
 TGTACCTAGTATCCCGTTCAGTCCCTCAAGTTCGCAATTAAGGATCGCTCAGGCCATCTCCAGGGC
 TTCAGAATTACATTTGCTTGAACCTCCTCTGTAGTTAAGAAAGCTAAAAGTTTGGCCATGTCAGTTACT
 ACTTCTGGATTTCTGAGTTCACCTCCTCAGTCCATCCTGAGGTCTACTCTCGATCAACACCTTTAGCAT
 CTCCTCTCCATCACCTGGAAGGTCTCCTCAACGACTTAAAGAACTAGAATTTCAATTTGTGGAAGAAGA
 TGTCCACCCAAAATGGATTCTGGGGCTGCAGATGATAGCAAATTAAGAATTTTACTACACCTAAAAAA
 TGTGCAAGTCCAGTGGAACTGAATGGCTGAAGAGCAAAGATAGGACCACATCTTTTTCTGAACAGCC
 CTGAAAAGGAGCATCAAGAAATGGATGAGGGGTCAAAAGTTTAGAGAACTGGATGTGAGCAAAGGAAA
 CAGCAGTGTTCATCACATCCGATGAGACTACCTTAGAGTATCAGGATGCACCGTCACCGGAAGACCTT
 GAAGAGACTGTTTTACGGCCTTAAGCCAAAAGCTCTTCCACTGCACTAACTACTAATGTAACGAAC
 AAACGAAAAGGATGGAGATAAAGATGTATTGCATCAGAAGTAACTCCTTCAGACCTACAGAAACAAAT
 GGGCAATTTAGAAGATGCAGAAACAAGGATCTTTAGTTGCAGCAGAGGCATTTTCAGAATTTGAATCAC
 TTAAGCCCGTTCAAGGAACTGAAGCTTCTTTGTGCACCATCAGTCTATGAAGGGAAAATCTTACCC
 AGAAGTCCAAGGTACCAGTGTGGACGAAGGATTAACATCTGTTGAAACCTACACCCCTGCAATTAGAGC
 AAATGACAATAAATCTATGGCTGATGCTCTTGGTGTGTTGGAACTCCTCGCTCACTATCTCTGAAGGT
 CCTATTGTCTCTGAGCGCAGGCTTAACCAGGAAGTAGCGCTGAACCTAAAAGAAGATCATGAAGTAGAAG
 TTGGTGTACTAAAAGAAAGTGTGACTTACCAGAAGAAAAGCTTCCAATTTCTGACAGCCCTCTGATAC
 TCAAGAAATTCATGTGATTGAACAAGAAAAGCTTGAAGCTCAAGATTGAGGAGAAGGCTAGGAATCTT
 TCATTTAATGAGTTATATCCCTCTGGAACACTTAAAGCTTCAAGTACAATTTTGATACTATTGACCAACAGT
 TTTGTGACTTAGCTGATAACAAAGACACTGCTGAATGTGACATTGCTGAAGTAGATGGGGAACCTTTTGT
 GGCTCAAAGCAACTTTACCTTGATATTGGAAGGTGAAGAAGGAGAAGTTGAGCCAGGTGATTTTGCATCA
 TCTGATGTGTACCTAAAGCAGCTAACACAGCAACTGAAGAAAACTTGTATGCAGTGGGAAAAATGATA
 ATCATGGACAAATTTGCAATTTGCCATCTGCCGTAAGTGAACAAAAGTCCAAAAAGTAGACTTTT
 ACCATATGTGCCTGAACCTATTAAGTAGCAATTCAGAAAAATTTACTAGATGTAATTAAGACACAAGA
 AGTAAAGAAATTACTTCAGATACAATGGAACAGTCCATTCATGAAACAATACCTTAGTGAGCCAAAAACA

TAATGTGTCCCACTAAATTGGTCAAATCTGCATTTAAGACTGCTCAGGAAACAAGCACAATGACTATGAA
TGTGAGCCAGGTTGATGACGTGGTTTCTCCAAAACCTCGTACGAGAGGTCAACGTATCCAAAACGTGAAT
GTCAAATCAGCACAACAGGAAGCATCAGCAGATGTTGCTACTCCTAAGATGCCAGGGCAGTCAGTCAGGA
AGAAAAC TAGGAAGGCAAAGAAATTTCTGAAGCTTCTGAAAACATCTATTCTGATGTCAGAGGACTATC
TCAGAACCAGCAAATACCTCAAATTTCTGTTACGCCTAGGAGAGGAAGGAGAAAGAAAGAAAGTAAATCAG
GACATACTAGAAAACACCAGTTCTGTGGAACAAGAATTACAGATCACTACAGGTAGGGAATCAAAAAGT
TAAAATCATCTCAGCTGTTGGAACCAGCAGTTGAAGAACTACTAAAAAGAAGTAAAGTTTCATCTGT
TACAAAAAGGACTCCTAGAGAATTAAAAGATCTGTAGAAAATCAGGAAAGTGTGAAATTATAAATGAT
CTAAAAGTTAGTACGGTAACAAGTCTAGCAGAATGATCAGAAAATTGAGAAGTACTAATTTAGATGCTT
CTGAAAATACAGGAAATAAGCAAGATGATAAATCCAGTGACAAGCAGCTGCGTATTAACATGTTAGAAG
GGTCAGAGGGAGAGAAGTTAGTCCATCAGATGTGAGAGAAGACTCCAACCTTGAGTCATCTCAGTTGACT
GTTCAAGCAGAATTTGATATGTCTGCCATACCTAGAAAACGTGGTAGACCAAGAAAAATCAATCCATCTG
AAGATGTAGGATCTAAGGCTGTTAAGGAAGAGAGAAGCCCAAGAAGAAAGAAAGTCCCAGCATTAGAAG
GAGATCTACAAGAAATACCCAGCTAAAAGTAAAATGTTGATGTTGAAAACAGCTTTAGGAAAATCC
ATTTTAGTGCCAAACGAGGAACTTCGATGGTGTGAGCTCTAAGAAAAACTTACAAAAAGACTGAAA
GTCAAAGCCAAAAACGTTCAATTGCACTCAGTATCAGAAGAACGCACAGATGAAATGACACATAAAGAAAC
AAATGAGCAGGAAGAAAGATTGCTCGCCACAGTTCTTCACTAAATCATCCCGCAGCAGCAGGACTCGG
TCTAGCAAGGCCATCTTGTGGCCGACCTTCTGAACCAAACAATGAGCCTTTATTTTCTCCAGCGTCAG
AAGTTCCAAGGAAAGCAAAGCTAAAAAATAGAGGTTCTGCACAGCTGAAAGAATTAGTTTCGGATTT
ATCTTCTCAGTTTGTCTCATCTCACCTCTGCTTTAAGGAGCAGACAAAAAACACATCCAATAAGAACAAG
CTTGAAGATGAACTGAAAGATGATGCACAATCAGTAGAACTCTGGGAAAGCCAAAAGCGAAACGAATCA
GGACGTCAAAAACAAAACAAGCAAGCAAAAACACAGAAAAGAAAGTCTTGGTCACCTCCTCCCATAGA
AATTCGGCTGATTTCCCTTGGCTAGCCAGCTGACGGAGTCAAGAGCAAACCAAGAAAAACTACAGAA
GTGACAGGAACAGGTCTTGAAGGAACAGAAAGAACTGTCTTCTATCCAAGCAAATTTTACGCAGAA
AAATGCTG

ACGCGTACGCGGCCGCTCGAG - GFP Tag - GTTTAA

Protein Sequence: >RG215742 representing NM_015446
 Red=Cloning site Green=Tags(s)

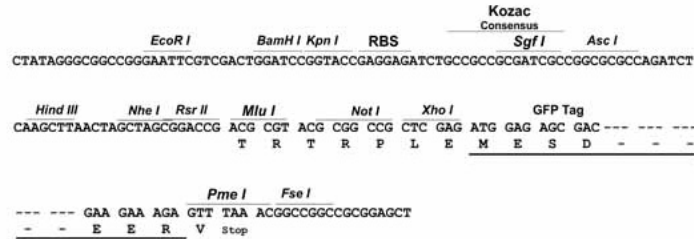
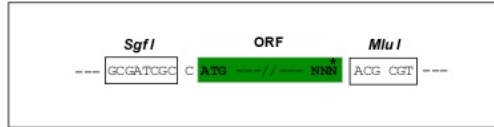
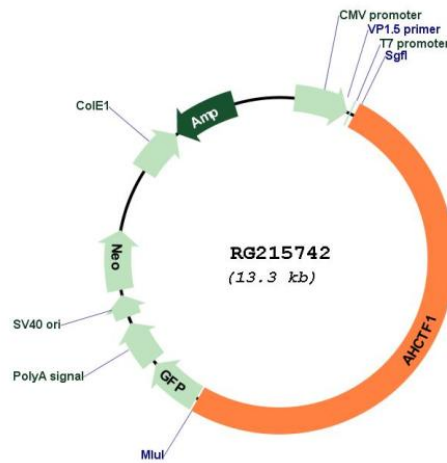
```
MRDLRAQVTSGLLPFPEVTLQALGEDEITLESVLRGKFAAGKNGLACGCPQLEVVNSITGERLSAYRF
SGVNEQPPVVLAVKEFSWQKRTGLLIGLEETEGSVLCLYDLGISKVVKAVVLPGRVTAIEPIINHGGASA
STQHLHPSLRWLFVAAVVTDVQGILLVDLCLDDLSCNQNEVEASDLEVLTGIPAEVPHIRESVMRQGRH
LCFQLVSPGTAVSTLSYISRTNQLAVGFSQGYLALWNMKSMKREYYIQLESQVPPVYAVTFQEPENDPR
NCCYLWAVQSTQDSEGDVLSLHLLQLAFGNRKLASGQILYEGLEYCEERYTLDLTGGMFPLRGQTSNTK
LLGCQSIEKFRSHGDREEGVNEALSPDTSVSVFTWQVNIYQGKPSVYLGLFDINRWYHAQMPDSLRSGE
YLHNCYSFALWSLESVVSRTSPHGILDILVHERSLNRGVPPSYPPPEQFFNPSTYNFDATCLLNSGVVHL
TCTGFQKETLTLFKKSGPSLNELIPDGYNRCLVAGLLSPRFVDVQPSLSQEEQLEAILSAAIQTSSLGL
LTGYIRRWITTEEQPNATNLRVLEWTWNKVVLTKKEFDRLCVPLFDGSCHFMDPQTIQSIQQCYLLLSN
LNIVLSCFASEAREITERGLIDL SNKFVVSHLICQYAVVWVWFVSHSGLLPEGIDDSVQLSRLCYNYPVIQ
NYTSTRQKFERLSRGKWNPDCLMIDGLVSQLGERIEKLWKRDEGGTGKYPASLHVLDMYLLDGVTEA
AKHSITIIYLLDIMYSFPNKTDTPIESFPTVFAISWGQVKLIQGFWDIDHNDYESGLDLLFHPATAKPLS
WQHSKIIQAFMSQGEHRQALRYIQTMKPTVSSGNDVILHLTVLLFNRCMVEAWNFRQHCNRLNIEELLK
HMYEVCQEMGLMEDLLKLPFTDTEQECLVKFLQSSASVQNHFFLLVHHLQRANYVPALKLNQTLKINVMN
DRDPRRLRERSLARNISILDQYGKILPRVHRKLAIERAKPYHLSTSSVFRVSRPKPLSAVPKQVVTGTVLT
RSVFINNVL SKIGEVWASKEPINSTTPFNSSKIEEPSPIVYSLPAPELPEAFFGTPISKASQKISRLLDL
VVQPVPRPSQCSEFIQQSSMKSPLYLVSRSLSQSSQLKGSQPAISRASELHLLLETPLVVKAKSLAMSVT
TSGFSEFTPQSILRSTLRSTPLASPSPPGRSPQRKTRISFVEEDVHPKWIPGAADDSKLEVF TTPKK
CAVPVETEWLKS KDRTTSFFLNSPEKEHQEMDEGSQSLEKLDVSKGNSSVITSDETTLEYQDAPSPEDL
EETVFTASKPKSSSTALTTNVTEQTEKDGKDFVASEVTPSDLQKQMGNLEDAETKDLLVAAEFSELNH
LSPVQGTASLCAPSVYEGKIFTQKSKVPVLDEGLTSVETYP AIRANDNKSMADVLGDGNSSLTISEG
PIVSERRLNQEVALLNKEDHEVEVGVLESVDLPEEKLPISDPPDTEIHVIEQEKLEAQDSGEEARNL
SFNELYPSGTLKLQYNFDTIDQQFCDLADNKDTAECDIAEVDGELFVAQSNFTLILEGEEGEVEPGDFAS
SDVLPKAANTA TEEKLVCSGENDNHGQIANLPSAVTSDQKSQKVDLTPYVPEPIKVAIAENLLDVIKDR
SKEITSDTMEQSIHETIPLVSQINMCPTKLKSAFKTAQETSTMTMNVSQVDDVSSKTRTRGRQRIQNVN
VKSAQQEASADVATPKMPGQSVRKKTRKAKEISEASENIYSDVRGLSQNQQIPQNSVTPRRGRKKENQ
DILENTSSVEQELQITTGRESKRLKSSQLLEPAVEETTKKEVKVSVTKRTPRRIKRSVENQESVEIIND
LKVSTVTSRMIKRLRSTNLDASENTGNKQDDKSSDKQLRIKHVRRVRGREVSPSDVREDSNLESSQLT
VQAEFDMSAIPKRGRPRKINPSEDVGSKAVKEERSPKKKEAPSIRRRSTRNTPAKSENVVGVKALGKS
ILVPNEELSMVMSSKKLTKKTESQSQRSLHSVSEERTDEMTHKETNEQEERLLATASFTKSSRSRTR
SSKAILLPDLSEPNNEPLFSPACEVPRKAKAKKIEVPAQLKELVSDLSSQFVISPPALRSRQKNTSNKNK
LEDELKDDAQSVETL GKPKAKIRTSKTKQASKNTEKESAWSPPIEIRLISPLASPADGVKSKPRKTE
VTGTGLGRNRKLLSSYPKQILRRKML
```

TRTRPLE - GFP Tag - V

Restriction Sites: SgfI-MluI

Cloning Scheme:

Cloning sites used for ORF Shutting:


Plasmid Map:

ACCN: NM_015446

ORF Size: 6798 bp

OTI Disclaimer:

The molecular sequence of this clone aligns with the gene accession number as a point of reference only. However, individual transcript sequences of the same gene can differ through naturally occurring variations (e.g. polymorphisms), each with its own valid existence. This clone is substantially in agreement with the reference, but a complete review of all prevailing variants is recommended prior to use. [More info](#)

OTI Annotation:

This clone was engineered to express the complete ORF with an expression tag. Expression varies depending on the nature of the gene.

Components:	The ORF clone is ion-exchange column purified and shipped in a 2D barcoded Matrix tube containing 10ug of transfection-ready, dried plasmid DNA (reconstitute with 100 ul of water).
Reconstitution Method:	<ol style="list-style-type: none">1. Centrifuge at 5,000xg for 5min.2. Carefully open the tube and add 100ul of sterile water to dissolve the DNA.3. Close the tube and incubate for 10 minutes at room temperature.4. Briefly vortex the tube and then do a quick spin (less than 5000xg) to concentrate the liquid at the bottom.5. Store the suspended plasmid at -20°C. The DNA is stable for at least one year from date of shipping when stored at -20°C.
RefSeq:	<u>NM_015446.3</u> , <u>NP_056261.3</u>
RefSeq Size:	8526 bp
RefSeq ORF:	6828 bp
Locus ID:	25909
UniProt ID:	<u>Q8WYP5</u>
Cytogenetics:	1q44
Domains:	AT_hook
Protein Families:	ES Cell Differentiation/IPS
Gene Summary:	Required for the assembly of a functional nuclear pore complex (NPC) on the surface of chromosomes as nuclei form at the end of mitosis. May initiate NPC assembly by binding to chromatin and recruiting the Nup107-160 subcomplex of the NPC. Also required for the localization of the Nup107-160 subcomplex of the NPC to the kinetochore during mitosis and for the completion of cytokinesis.[UniProtKB/Swiss-Prot Function]