

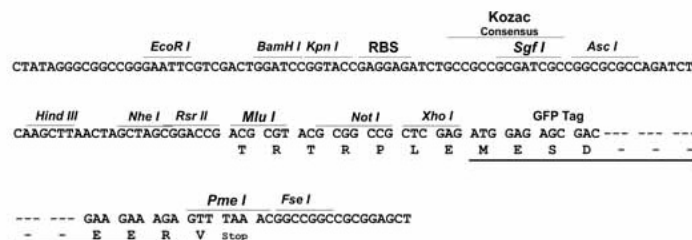
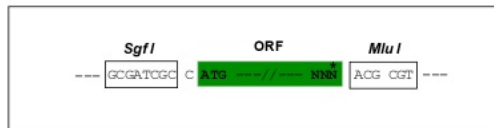
Product datasheet for **RG215727**

NUFIP1 (NM_012345) Human Tagged ORF Clone

Product data:

Product Type:	Expression Plasmids
Product Name:	NUFIP1 (NM_012345) Human Tagged ORF Clone
Tag:	TurboGFP
Symbol:	NUFIP1
Synonyms:	bA540M5.1; NUFIP; Rsa1
Mammalian Cell Selection:	Neomycin
Vector:	pCMV6-AC-GFP (PS100010)
E. coli Selection:	Ampicillin (100 ug/mL)
Restriction Sites:	SgfI-MluI
Cloning Scheme:	

Cloning sites used for ORF Shuttling:



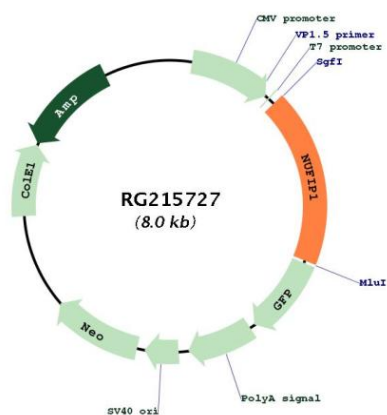
ACCN:	NM_012345
ORF Size:	1485 bp



[View online »](#)

OTI Disclaimer:	The molecular sequence of this clone aligns with the gene accession number as a point of reference only. However, individual transcript sequences of the same gene can differ through naturally occurring variations (e.g. polymorphisms), each with its own valid existence. This clone is substantially in agreement with the reference, but a complete review of all prevailing variants is recommended prior to use. More info
OTI Annotation:	This clone was engineered to express the complete ORF with an expression tag. Expression varies depending on the nature of the gene.
Components:	The ORF clone is ion-exchange column purified and shipped in a 2D barcoded Matrix tube containing 10ug of transfection-ready, dried plasmid DNA (reconstitute with 100 ul of water).
Reconstitution Method:	<ol style="list-style-type: none"> 1. Centrifuge at 5,000xg for 5min. 2. Carefully open the tube and add 100ul of sterile water to dissolve the DNA. 3. Close the tube and incubate for 10 minutes at room temperature. 4. Briefly vortex the tube and then do a quick spin (less than 5000xg) to concentrate the liquid at the bottom. 5. Store the suspended plasmid at -20°C. The DNA is stable for at least one year from date of shipping when stored at -20°C.
Note:	Plasmids are not sterile. For experiments where strict sterility is required, filtration with 0.22um filter is required.
RefSeq:	NM_012345.1 , NP_036477.1
RefSeq Size:	3463 bp
RefSeq ORF:	1488 bp
Locus ID:	26747
UniProt ID:	Q9UHK0
Cytogenetics:	13q14.12
Domains:	zf-C2H2
Gene Summary:	This gene encodes a nuclear RNA binding protein that contains a C2H2 zinc finger motif and a nuclear localization signal. This protein is associated with the nuclear matrix in perichromatin fibrils and, in neurons, localizes to the cytoplasm in association with endoplasmic reticulum ribosomes. This protein interacts with the fragile X mental retardation protein (FMRP), the tumor suppressor protein BRCA1, upregulates RNA polymerase II transcription, and is involved in box C/D snoRNP biogenesis. A pseudogene of this gene resides on chromosome 6q12. [provided by RefSeq, Feb 2012]

Product images:



Circular map for RG215727