

Product datasheet for **RG215726**

HMG2L1 (HMGXB4) (NM_014250) Human Tagged ORF Clone

Product data:

Product Type:	Expression Plasmids
Product Name:	HMG2L1 (HMGXB4) (NM_014250) Human Tagged ORF Clone
Tag:	TurboGFP
Symbol:	HMGXB4
Synonyms:	high-mobility group protein 2-like 1; HMG2L1; HMGBCG; HMG box domain containing 4; OTTHUMP00000028778; THC211630
Mammalian Cell Selection:	Neomycin
Vector:	pCMV6-AC-GFP (PS100010)
E. coli Selection:	Ampicillin (100 ug/mL)



[View online »](#)

ORF Nucleotide Sequence:

>RG215726 representing NM_014250
 Red=Cloning site Blue=ORF Green=Tags(s)

TTTTGTAATACGACTCACTATAGGGCGGCCGGAATTCGTCGACTGGATCCGGTACCGAGGAGATCTGCC
 GCC**GCGATCGCC**

ATGGACCTGTTGAAAGCTATCACTTCCCCACTGGCAGCAGGCTCCAAGCCCTCCAAAAGACTGGGGAGA
 AATCCTCTGGCTCTCAAGCCATTTCGGAGAGTAAAAAGGAGCACACAGGAAGAAAGTCAGTGGAAGCAG
 TGGGGAATACCCTAGAGGATGGTGGCTCCACAAAATCGAAAAAATGAAACCTCTCTATGTGAACACA
 GAGACTGACCTTCGGGAGCCTGATGGTTAAAAATGAAACTTATTCTGTACCAAAGGAGAAGGGAA
 GCAGCTCTGTTGATGAGGAGTCTTTTCAATATCCCTCCCAACAAGCGACTGTGAAAAATCCTCAAAGAA
 ATCAGCTCGGGATGAGCAGGGTCTTTACTCCTAGGACATGAGTTACAGAGCTTTCTGAAAAACAGCCCG
 AAAAAGCACAAAGTCATCCTCAGACGCACATTCATCTCTGGCCCTGAAGGCTGTGGGTCTGACGCCCTCC
 AGTTCGCAGAGTCCCACAGTCTAACCTTGATCTTTAGGGCTTGAACCTATTCTGGTAGAATCAGACTC
 ATCCTCTGGTGGGAACTAGAGGCTGGGGAGTTAGTGATAGATGATTCTTACCGAGAAATCAAGAAGAAA
 AAGAAGTCAAAGAAGAGCAAAAAGAAGAAAGACAAGGAGAAGCATAAAGAGAAGCGACACTCCAAGTCCA
 AGAGAAGTTTAGGACTTTCTGCCGTGCCAGTGGGAGAGGTCACAGTGACATCTGGCCCTCCTCCCAGCAT
 CCCATACGCTGGAGCAGCAGCACCTCCCCTGCCACTTCCTGGCCTCCACACAGATGGGCATAGTAAAAA
 AAAAAGAAAAAAGAAGAGAAGGACAAAGAGAGAGAGAGAGAGAGAGAAAGCCAAAAAAGAAGACATGTCGG
 CCTACCAGGTGTTCTGTAAAGAGTATCGCGTGACCATTGTGGCTGACCATCCAGGTATAGATTTTGGGGA
 ACTTAGTAAAAACTGGCTGAGGTGTGGAAGCAATTACCAGAAAAAGACAACTGATTTGGAAGCAAAAA
 GCTCAGTATCTGCAGCACAAACAGAACAAGCAGAAGCCACAACCTGTGAAAAGGAAAGCATCCAGCTCAG
 AAGGTTCCATGAAAGTCAAAGCCTCTTCTGTAGGAGTACTGTACCCCGAAGAAGTCCCACCCACCAC
 CATGCTGTTACCAGCCTCACCAGCCAAAGCCCTGAGACAGAGCCATTGATGTTGCTGCTCATCTTCAG
 CTGTTGGGAGAGTCCCTAAGCCTCATTGGACACCGTCTGCAGGAACTGAGGGTATGGTGGCTGTGTCTG
 GCAGTTTGTGAGTCTTCTGGATTCCATTATCTGTGCCCTTGGCCCTTGGCATGTCTCACCACACAACT
 ACCTGAATTGAATGGCTGTCCCAACAGGTCTTGTCAAACACATTAGACAACATTGCTTACATCATGCC
 GGACTG

ACGCGTACGCGGCCGCTCGAG - GFP Tag - GTTTAA

Protein Sequence:

>RG215726 representing NM_014250
 Red=Cloning site Green=Tags(s)

MDLLKAITSPLAAGSKPSKKTGEKSSGSSSHSESKKEHHRKVKVSGSSGELPLEDGGSHKSKMKPLYVNT
 ETLTLREPDGLKMKLILSPKEKGSSSVDEESFYPSQQATVKKSSKKSARDEQGALLLGHELQSFLKTAR
 KKHKSSSDAHSSPPEGCGSDASQFAESHANLDL SGLPILVESDSSSGGELEAGELVIDDSYREIKKK
 KKS KSKSKKKKDKKEKHKEKRHSKSKRSLGLSAVPVGEVTVTSGPPPSIPYAGAAAPPLPLPGLHTDGHSEK
 KKKKKEEKDKERERGEKPKKKNMSAYQVFCKEYRVTI VADHPGIDFGELSKKLAEVWKQLPEKDKL IWKQK
 AQYLQHKQNKAEATTVKKRASSSEGS MKVKASSVGLSPQKSPPTTMLLPASPAKAPETEPIDVA AHLQ
 LLGESLSLIGHRLQETEGMVA VSGSLSVLLDSIICALGPLACLTTQLPELNGCPKQVLSNTLDNIAYIMP
 GL

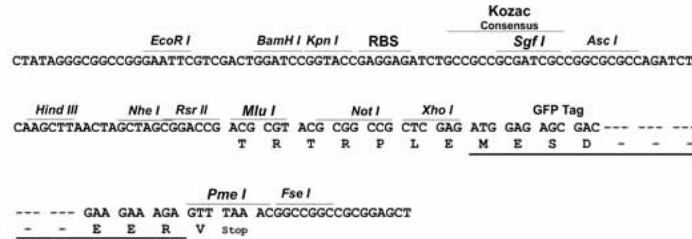
TRTRPLE - GFP Tag - V

Restriction Sites:

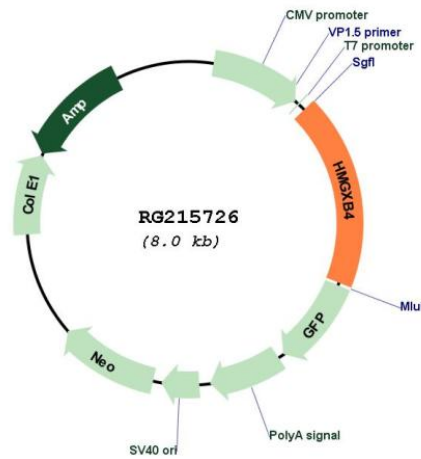
Sgfl-MluI

Cloning Scheme:

Cloning sites used for ORF Shutting:



Plasmid Map:



ACCN:	NM_014250
ORF Size:	1476 bp
OTI Disclaimer:	The molecular sequence of this clone aligns with the gene accession number as a point of reference only. However, individual transcript sequences of the same gene can differ through naturally occurring variations (e.g. polymorphisms), each with its own valid existence. This clone is substantially in agreement with the reference, but a complete review of all prevailing variants is recommended prior to use. More info
OTI Annotation:	This clone was engineered to express the complete ORF with an expression tag. Expression varies depending on the nature of the gene.
Components:	The ORF clone is ion-exchange column purified and shipped in a 2D barcoded Matrix tube containing 10ug of transfection-ready, dried plasmid DNA (reconstitute with 100 ul of water).
Reconstitution Method:	<ol style="list-style-type: none">1. Centrifuge at 5,000xg for 5min.2. Carefully open the tube and add 100ul of sterile water to dissolve the DNA.3. Close the tube and incubate for 10 minutes at room temperature.4. Briefly vortex the tube and then do a quick spin (less than 5000xg) to concentrate the liquid at the bottom.5. Store the suspended plasmid at -20°C. The DNA is stable for at least one year from date of shipping when stored at -20°C.
RefSeq:	NM_014250.1 , NP_055065.1
RefSeq Size:	4121 bp
RefSeq ORF:	1478 bp
Locus ID:	10042
Cytogenetics:	22q12.3
Protein Families:	Transcription Factors
Gene Summary:	High mobility group (HMG) proteins are nonhistone chromosomal proteins. See HMG2 (MIM 163906) for additional information on HMG proteins.[supplied by OMIM, Nov 2010]