

## Product datasheet for **RG215719**

### Lipolysis Stimulated Lipoprotein Receptor (LSR) (NM\_205835) Human Tagged ORF Clone

#### Product data:

Product Type:	Expression Plasmids
Product Name:	Lipolysis Stimulated Lipoprotein Receptor (LSR) (NM_205835) Human Tagged ORF Clone
Tag:	TurboGFP
Symbol:	LSR
Synonyms:	ILDR3; LISCH7
Mammalian Cell Selection:	Neomycin
Vector:	pCMV6-AC-GFP (PS100010)
E. coli Selection:	Ampicillin (100 ug/mL)



[View online »](#)

**ORF Nucleotide Sequence:**

>RG215719 representing NM\_205835  
 Red=Cloning site Blue=ORF Green=Tags(s)

TTTTGTAATACGACTCACTATAGGGCGGCCGGGAATTCGTCGACTGGATCCGGTACCGAGGAGATCTGCC  
 GCC**CGCATCGCC**

ATGCAACAGGACGGACTTGGAGTAGGGACAAGGAACGGAAGTGGGAAGGGGAGGAGCGTGCACCCCTCT  
 GGCTTGGTGCAGCGCCGCCCCCTAAGTACTTTGGAAGGACGCGCGGCCAGACGCGCCAGACGGC  
 CGCGATGGCGCTGTTGGCCGGCGGGCTCTCCAGAGGGCTGGGCTCCACCCGCGCCGCGAGCCGGGAC  
 GCGGTCGTCTTCGTGTGGCTTCTGCTTAGCACCTGGTGCACAGCTCCTGCCAGGGCCATCCAGGTGACCG  
 TGTCCAACCCCTACCACGTGGTATCCTCTCCAGCCTGTGACCTGCCCTGTACCTACCAGATGACCTC  
 GACCCCAACGCAACCCATCGTCACTGGAAGTACAAGTCTTTCTGCCGGGACCGCATCGCCGATGCCTTC  
 TCCCCGGCAGCGTCGACAACCAGCTCAATGCCAGCTGGCAGCCGGGAACCCAGGCTACAACCCCTACG  
 TTGAGTGCCAGGACAGCGTGCACACCGTCAAGGTCGTGGCCACCAAGCAGGGCAACGCTGTGACCTGGG  
 AGATTACTACCAGGGCCGAGGATTACCATCACCGGAAATGCTGACCTGACCTTTGACCAGACGGCGTGG  
 GGGGACAGTGGTGTGATTACTGCTCCGTGGTCTCAGCCAGGACCTCCAGGGGAACAATGAGGCCCTACG  
 CAGAGCTCATCGTCTTGTGTATGCCGCGGCAAAAGCAGCCACCTCAGGTGTTCCAGCATTTATGCCCC  
 CAGCACCTATGCCACCTGTCTCCCGCAAGACCCACCCACCCAGCTATGATTTCCATGGGCCCTGCC  
 TACAACGGGTACCTGGAGGATACCCTGGAGACGTTGACAGGAGTAGCTCAGCTGGTGGCCAAGGCTCCT  
 ATGTACCCTGCTTCGGGACACGGACAGCAGTGTGGCCTCTGAAGTCCGAGTGGCTACAGGATTCAGGC  
 CAGCCAGCAGGACGACTCCATGCGGGTCTGTACTACATGGAGAAGGAGCTGGCCAACCTCGACCTTCT  
 CGACCTGGCCCCCAGTGGCCGTGTGGAGCGGGCCATGAGTGAAGTCACTCCCTCCACGAGGACGACT  
 GGCGATCTCGCCCTTCCCGGGCCCTGCCCTCACCCGATCCGGGATGAGGAGTGGGTGGCCACTCCC  
 CCGGAGTCCCAGGGATGGGACCAGGAGCCCGCCAGGGAGCAGGCAGGCGGGGGCTGGCGGGCCAGGCGG  
 CCCCAGGCGCCGCTCCGTGGACGCGCTGGACGACCTCACCCCGCCGAGCACCGCCGAGTACGGGAGCAGGT  
 CTCCCACGAGTAATGGTGGGAGAAGCCGGGCTACATGCCCCCGGAGCCGAGCCGGGACGACCTCTA  
 TGACCAAGACGACTCGAGGGACTTCCCACGCTCCCGGGACCCCACTACGACGACTTCAGGTCTCGGGAG  
 CGCCCTCTCGCCACCCAGGTCCCACCACCACCGTACCCGGGACCTCGGGACAACGGCTCCAGGTCCG  
 GGGACCTCCCCTATGATGGGCGGCTACTGGAGGAGGCTGTGAGGAAGAAGGGGTCGGAGGAGAGGAGGAG  
 ACCCCACAAGGAGGAGGAGGAAGAGGCCTACTACCCGCCCGCCGCCCCCGTACTCGGAGACCGACTCG  
 CAGGCGTCCCAGAGCGCAGGCTCAAGAAGAATTGGCCCTGAGTCGGGAAAGTTTATGTCGTC

**ACGCGTACGCGGGCCGCTCGAG - GFP Tag - GTTTAA**

**Protein Sequence:**

>RG215719 representing NM\_205835  
 Red=Cloning site Green=Tags(s)

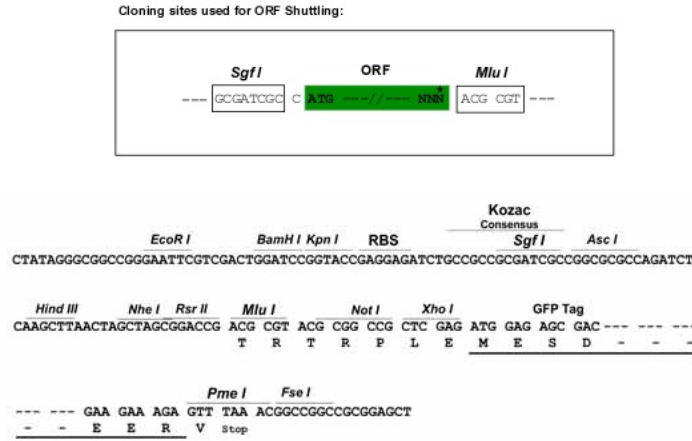
MQQDGLGVGTRNGSGKGRSVHPSWPCAPRPLRYFGRDARRAQTAAALLAGLSRGLGSHPAAGR  
 AVVFWLLLSTWCTAPARAIQVTVSNPYHVILFQPVTLPCTYQMTSTPTQPIVIWKYSFCRDRIDAF  
 SPASVDNQLNAQLAAGNPGYNPYVEQDSVRTVRVATKQGNVTLGDYYQRRITITGNADLTFDQTAW  
 GDSGVYYCSVSAQDLQGNNEAYAEILVLYAAGKAATSGVPSIYAPSTY AHL SPAKTPPPAMIPMGPA  
 YNGYPGGYPGDVDRSSAGGQGSYVPLLRDTSVASEVRSYRIQASQQDDSMRVLYYMEKELANFDPS  
 RPPGPPSGRVERAMSEVTS LHEDDWRSPSRGPALTPIRDEEWGGHSPRSRPGWDQEPAREQAGGWRARR  
 PRARSVDALDDLTPPSTAESGSRSPSTNGGRSRA YMPPRSRSRDDLYDQDDSRDFPRSRDPHYDDFRSRE  
 RPPADPRSHHHRTRDPRDNGSRGDLPYDGRLLEEAVRKKGSEERRRRPHKEEEEEAYPPAPPYSETDS  
 QASRERRLKKNLALSRESLVV

**TRTRPLE - GFP Tag - V**

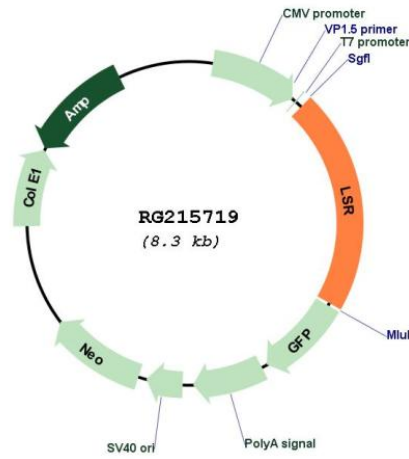
**Restriction Sites:**

SgfI-MluI

Cloning Scheme:



Plasmid Map:



ACCN: NM\_205835  
 ORF Size: 1743 bp

<b>OTI Disclaimer:</b>	Due to the inherent nature of this plasmid, standard methods to replicate additional amounts of DNA in E. coli are highly likely to result in mutations and/or rearrangements. Therefore, OriGene does not guarantee the capability to replicate this plasmid DNA. Additional amounts of DNA can be purchased from OriGene with batch-specific, full-sequence verification at a reduced cost. Please contact our customer care team at <a href="mailto:custsupport@origene.com">custsupport@origene.com</a> or by calling 301.340.3188 option 3 for pricing and delivery.
	The molecular sequence of this clone aligns with the gene accession number as a point of reference only. However, individual transcript sequences of the same gene can differ through naturally occurring variations (e.g. polymorphisms), each with its own valid existence. This clone is substantially in agreement with the reference, but a complete review of all prevailing variants is recommended prior to use. <a href="#">More info</a>
<b>OTI Annotation:</b>	This clone was engineered to express the complete ORF with an expression tag. Expression varies depending on the nature of the gene.
<b>Components:</b>	The ORF clone is ion-exchange column purified and shipped in a 2D barcoded Matrix tube containing 10ug of transfection-ready, dried plasmid DNA (reconstitute with 100 ul of water).
<b>Reconstitution Method:</b>	<ol style="list-style-type: none"> <li>1. Centrifuge at 5,000xg for 5min.</li> <li>2. Carefully open the tube and add 100ul of sterile water to dissolve the DNA.</li> <li>3. Close the tube and incubate for 10 minutes at room temperature.</li> <li>4. Briefly vortex the tube and then do a quick spin (less than 5000xg) to concentrate the liquid at the bottom.</li> <li>5. Store the suspended plasmid at -20°C. The DNA is stable for at least one year from date of shipping when stored at -20°C.</li> </ol>
<b>RefSeq:</b>	<a href="#">NM_205835.3</a>
<b>RefSeq Size:</b>	2081 bp
<b>RefSeq ORF:</b>	1602 bp
<b>Locus ID:</b>	51599
<b>UniProt ID:</b>	<a href="#">Q86X29</a>
<b>Cytogenetics:</b>	19q13.12
<b>Protein Families:</b>	Druggable Genome, Transcription Factors, Transmembrane
<b>Gene Summary:</b>	Probable role in the clearance of triglyceride-rich lipoprotein from blood. Binds chylomicrons, LDL and VLDL in presence of free fatty acids and allows their subsequent uptake in the cells (By similarity).[UniProtKB/Swiss-Prot Function]