

## Product datasheet for **RG215701**

### **SH3KBP1 (NM\_001024666) Human Tagged ORF Clone**

#### **Product data:**

Product Type:	Expression Plasmids
Product Name:	SH3KBP1 (NM_001024666) Human Tagged ORF Clone
Tag:	TurboGFP
Symbol:	SH3KBP1
Synonyms:	AGMX2; CD2BP3; CIN85; GIG10; HSB-1; HSB1; IMD61; MIG18
Mammalian Cell Selection:	Neomycin
Vector:	pCMV6-AC-GFP (PS100010)
E. coli Selection:	Ampicillin (100 ug/mL)



[View online »](#)

**ORF Nucleotide Sequence:**

>RG215701 representing NM\_001024666  
 Red=Cloning site Blue=ORF Green=Tags(s)

TTTTGTAATACGACTCACTATAGGGCGGCCGGAATTCGTCGACTGGATCCGGTACCGAGGAGATCTGCC  
 GCC**CGCATCGCC**

ATGGAGGTTTCAGCAGCCAAAGCCCAAGTCCCGCAGACTTGTCTGAGATTGAAATAAAGAAAGAGATGA  
 AGAAAGACCCCTCTACCAACAAAGCTCCAGAAAAGCCCTGCACGAAGTGCCAGTGAAACTCTTTGCT  
 GTCTTCTGAAACGATTTTAAGAACCAATAAGAGAGGCGAGCGACGAGGCGCCGGTGCCAGGTGGCATT  
 AGCTACCTGCCCCAGAATGACGATGAACTTGAGCTGAAAGTTGGCGACATCATAGAGGTGGTAGGAGAGG  
 TAGAGGAAGGATGGTGGGAAGGTGTTCTCAACGGGAAGACTGGAATGTTTCCTTCCAACCTCATCAAGGA  
 GCTGTGAGGGGAGTCGGATGAGCTTGGCATTCCAGGATGAGCAGCTATCCAAGTCAAGTTAAGGAA  
 ACCACAGGCTCCGAGAGTGATGGGGTACTCAAGCAGCACCAAGTCTGAAGGTGCCAACGGGACAGTGG  
 CAACTGCAGCAATCCAGCCAAAGAAAGTAAAGGGAGTGGGCTTTGGAGACATTTCAAAGACAAGCCAT  
 CAACTAAGACCAAGGTCAATTGAAGTAGAAAATGACTTCTGCCGGTAGAAAAGACTATTGGGAAGAAG  
 TTACCTGCAACTACAGCAACTCCAGACTCATCAAAAACAGAAATGGACAGCAGGACAAAAGAGCAAGGATT  
 ACTGCAAAGTAATATTTCCATATGAGGCACAGAATGATGATGAATTGACAATCAAAGAAGGAGATATAGT  
 CACTCTCATCAATAAGGACTGCATCGACGTAGGCTGGTGGGAAGGAGAGCTGAACGGCAGACGAGGCGTG  
 TTCCCCGATAACTTCGTGAAGTACTTCCACCGGACTTTGAAAAGGAAGGGAATAGACCCAAGAAGCCAC  
 CGCTCCATCCGCTCCTGTATCAAAACAGGGGACGGCACCCTGAGAGAAAACATGAAATTAAGAAAGAT  
 ACCTCTGAAAGACCAGAAATGCTTCCAAACAGAACAGAAAGAAAAGAACAGAGAGAGAGGCCAAAA  
 CTCGATTTACAGAAGCCCTCCGTTCTGCCATACCGCCAAAAAGCCTCGGCCACCTAAGACCAATTCTC  
 TCAGCAGACTGGCGCAGTCCCGGAGAAAGCCGGAGAGACCGGTGGTCCGCTGACACACACAGGGGG  
 TGACAGTCCAAAGATTGACTTGGCCGGCAGTTCGCTATCTGGCATCCTGGACAAAAGATCTCTCGGACCGC  
 AGCAATGACATTGACTTAGAAGTTTTGACTCCGTGGTATCATCTACTGAGAACTCAGTCATCCGACCA  
 CAAGCAGACAAAAGCTACAGGGAGGCGCCTCCGTCCAGTCCCTCACATCTTTCATCCCTTTCAAGCCC  
 TGATATCTTCGACTCCCCAAGTCCCGAAGAGGATAAGGAGGAACACATTTCACTTGCGCACAGAGGAGTG  
 GACGCGTCAAAGAAAACCTCCAAGACTGTTACCATATCCCAAGTGTCTGACAACAAAGCATCCCTGCCGC  
 CCAAGCCGGGACCATGGCAGCAGGTGGCGTGGGCCAGCCCTCTGTCTCAGCGGCGCCCTCCCCCT  
 GTCATCTCTTTGGGAACAGCTGGACACAGAGCCAACCTCCCGTCTCTGTTCCGGCACGGAAGGAAAACCA  
 AAGATGGAGCCTGCGGCCAGCAGCCAGGCGCCGTGGAGGAGCTAAGGACACAGTCCGCGAGCTGAGGA  
 GCATCATCGAGACCATGAAGACCAGCAGAAACGAGAGATTAACAGTTATTGTCTGAGTTGGATGAAGA  
 GAAGAAAATCCGGCTTCGGTTGCAGATGGAAGTGAACGACATAAAGAAAGCTCTACAATCAAAA

AC**CGGCCGCTCGAG** - GFP Tag - GTTTAA

**Protein Sequence:**

>RG215701 representing NM\_001024666  
 Red=Cloning site Green=Tags(s)

MEVSAAKAPSAADLSEIEIKKEMKDPKLNKAPEKPLHEVPSGNSLLSSETILRTNKRGERRRRRRCQVAF  
 SYLPQNDELKLVGDIIEVVGEVEEGWVEGLNGKTMFSPNF IKELSGESDELGISQDEQLSKSSLRE  
 TTGSESDGGSSSTKSEGANVTAAAIQPKVKVGVGFDIFKDKPIKLRPRSIEVENDFLPVEKTIGKK  
 LPATTATPDSSKTEMDSRTKSKDYCKVIFPYEAQNDELTIKEGDIVTLINKDCIDVWGWEGELNGRRGV  
 FPDNFVKLLPPDFEKEGNRPKPPPPSAPVIKQAGTTERKHEIKKIPPERPEMLPNRTEEKERPEREPK  
 LDLQKPSVPAIIPPKPRPKTNSLSRPGALPPRRPERPVGPLTHTRGDSPKIDLAGSSLSGILDKDLSDR  
 SNDIDLEGFDSVVSSTEKLSHPTTSRPKATGRRPPSQSLTSSSLSPDIFDPSPEEDKEEHI SLAHRGV  
 DASKKTSKTVTISQVSDNKASLPPKPGTMAAGGGPAPLSSAAPSPLSSSLGTAGHRANSPSLFGTEGPK  
 KMEPAASSQAAVEELRTQVRELRSIIETMKDQKREIKQLLSELDEEKKIRLRLQMEVNDIKKALQSK

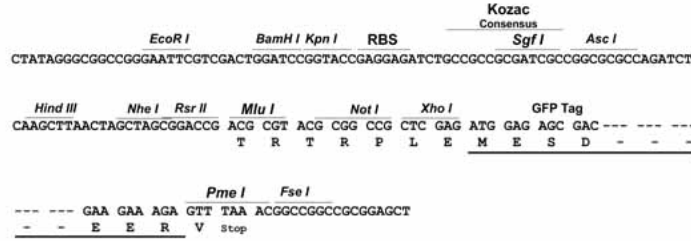
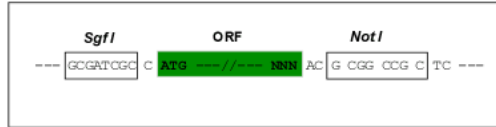
**TRPLE** - GFP Tag - V

**Restriction Sites:**

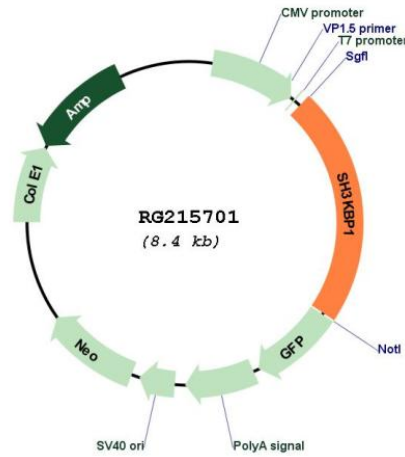
SgfI-NotI

Cloning Scheme:

Cloning sites used for ORF Shuttling:



Plasmid Map:



ACCN: NM\_001024666  
 ORF Size: 1884 bp

<b>OTI Disclaimer:</b>	The molecular sequence of this clone aligns with the gene accession number as a point of reference only. However, individual transcript sequences of the same gene can differ through naturally occurring variations (e.g. polymorphisms), each with its own valid existence. This clone is substantially in agreement with the reference, but a complete review of all prevailing variants is recommended prior to use. <a href="#">More info</a>
<b>OTI Annotation:</b>	This clone was engineered to express the complete ORF with an expression tag. Expression varies depending on the nature of the gene.
<b>Components:</b>	The ORF clone is ion-exchange column purified and shipped in a 2D barcoded Matrix tube containing 10ug of transfection-ready, dried plasmid DNA (reconstitute with 100 ul of water).
<b>Reconstitution Method:</b>	<ol style="list-style-type: none"><li>1. Centrifuge at 5,000xg for 5min.</li><li>2. Carefully open the tube and add 100ul of sterile water to dissolve the DNA.</li><li>3. Close the tube and incubate for 10 minutes at room temperature.</li><li>4. Briefly vortex the tube and then do a quick spin (less than 5000xg) to concentrate the liquid at the bottom.</li><li>5. Store the suspended plasmid at -20°C. The DNA is stable for at least one year from date of shipping when stored at -20°C.</li></ol>
<b>RefSeq:</b>	<a href="#">NM_001024666.3</a>
<b>RefSeq Size:</b>	2689 bp
<b>RefSeq ORF:</b>	1887 bp
<b>Locus ID:</b>	30011
<b>UniProt ID:</b>	<a href="#">Q96B97</a>
<b>Cytogenetics:</b>	Xp22.12
<b>Protein Families:</b>	Druggable Genome
<b>Protein Pathways:</b>	Endocytosis
<b>Gene Summary:</b>	This gene encodes an adapter protein that contains one or more N-terminal Src homology domains, a proline rich region and a C-terminal coiled-coil domain. The encoded protein facilitates protein-protein interactions and has been implicated in numerous cellular processes including apoptosis, cytoskeletal rearrangement, cell adhesion and in the regulation of clathrin-dependent endocytosis. Alternate splicing results in multiple transcript variants encoding distinct isoforms. [provided by RefSeq, Jul 2017]