

Product datasheet for **RG215690**

PAX8 (NM_013992) Human Tagged ORF Clone

Product data:

Product Type: Expression Plasmids
Product Name: PAX8 (NM_013992) Human Tagged ORF Clone
Tag: TurboGFP
Symbol: PAX8
Mammalian Cell Selection: Neomycin
Vector: pCMV6-AC-GFP (PS100010)
E. coli Selection: Ampicillin (100 ug/mL)
ORF Nucleotide Sequence: >RG215690 representing NM_013992
Red=Cloning site Blue=ORF Green=Tags(s)

TTTTGTAATACGACTCACTATAGGGCGGCCGGGAATTCGTCGACTGGATCCGGTACCGAGGAGATCTGCC
GCC**CGATCGCC**

ATGCCTCACAACCTCCATCAGATCTGGCCATGGAGGGCTGAACCAGCTGGGAGGGGCCTTTGTGAATGGCA
GACCTCTGCCGGAAGTGGTCCGCCAGCGCATCGTAGACCTGGCCACCAGGGTGTAAAGCCCTGCGACAT
CTCTCGCCAGCTCCGCGTCAGCCATGGCTGCGTCAGCAAGATCCTTGGCAGGTAACGAGACTGGCAGC
ATCCGGCCTGGAGTGATAGGGGGCTCCAAGCCCAAGGTGGCCACCCCAAGGTGGTGGAGAAGATTGGGG
ACTACAAACGCCAGAACCCTACCATGTTTGCCTGGGAGATCCGAGACCGGCTCCTGGCTGAGGGCGTCTG
TGACAATGACACTGTGCCAGTGTGAGCTCCATTAATAGAATCATCCGGACCAAAGTGCAGCAACCATT
AACCTCCCTATGGACAGCTGCGTGGCCACCAAGTCCCTGAGTCCCGGACACACGCTGATCCCCAGCTCAG
CTGTAACCTCCCGGAGTCAACCCAGTCGGATTCCCTGGGCTCCACCTACTCCATCAATGGGCTCCTGGG
CATCGCTCAGCCTGGCAGCGACAAGAGGAAAATGGATGACAGTGATCAGGATAGCTGCCGACTAAGCATT
GACTCACAGAGCAGCAGCAGCGGACCCCGAAAAGCACCTTCGCACGGATGCCTTCAGCCAGCACCACTCG
AGCCGCTCGAGTGCCATTTGAGCGGCAGCACTACCCAGAGGCCTATGCCTCCCCAGCCACACCAAAGG
CGAGCAGGAAGTGAATACTCTGGCAATGCCTATGGCCACACCCCTACTCCTCTACAGCGAGGCCTGGC
GCTTCCCAACTCCAGCTTGC

ACGCGTACGCGGCCGCTCGAG - GFP Tag - GTTTAA



[View online »](#)

Protein Sequence: >RG215690 representing NM_013992
Red=Cloning site Green=Tags(s)

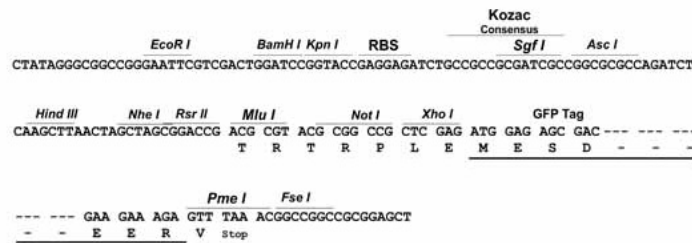
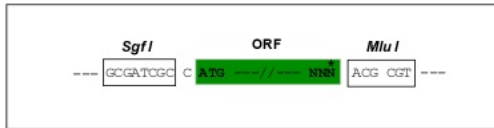
MPHNSIRSGHGGLNQLGGAFVNGRPLPEVVRQRIVDLAHQGVPCDISRQLRVSHGCVSKILGRYYETGS
 IRPGVIGGSKPKVATPKVVEKIGDYKRQNPMTFAWEIRDRLLAEGVCDNDTVPSVSSINRIIRTKVQPPF
 NLPMDSCVATKSLSPGHTLIPSSAVTPPESPQSDSLGSTYSINGLLGIAQPGSDKRKMDDSDQDSCRLSI
 DSQSSSGPRKHLRTDAFSQHHLEPLECFERQHYPEAYASPSHTKGEQEVNTLAMPMATPPTPTARPG
 ASPTPAC

TRTRPLE - GFP Tag - V

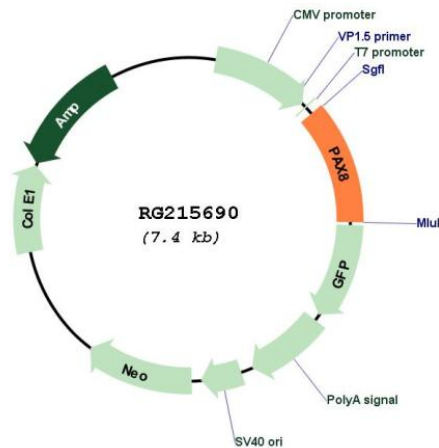
Restriction Sites: SgfI-MluI

Cloning Scheme:

Cloning sites used for ORF Shutting:



Plasmid Map:



ACCN: NM_013992

ORF Size: 861 bp

OTI Disclaimer:	The molecular sequence of this clone aligns with the gene accession number as a point of reference only. However, individual transcript sequences of the same gene can differ through naturally occurring variations (e.g. polymorphisms), each with its own valid existence. This clone is substantially in agreement with the reference, but a complete review of all prevailing variants is recommended prior to use. More info
OTI Annotation:	This clone was engineered to express the complete ORF with an expression tag. Expression varies depending on the nature of the gene.
Components:	The ORF clone is ion-exchange column purified and shipped in a 2D barcoded Matrix tube containing 10ug of transfection-ready, dried plasmid DNA (reconstitute with 100 ul of water).
Reconstitution Method:	<ol style="list-style-type: none">1. Centrifuge at 5,000xg for 5min.2. Carefully open the tube and add 100ul of sterile water to dissolve the DNA.3. Close the tube and incubate for 10 minutes at room temperature.4. Briefly vortex the tube and then do a quick spin (less than 5000xg) to concentrate the liquid at the bottom.5. Store the suspended plasmid at -20°C. The DNA is stable for at least one year from date of shipping when stored at -20°C.
RefSeq:	NM_013992.4
RefSeq Size:	3653 bp
RefSeq ORF:	864 bp
Locus ID:	7849
UniProt ID:	Q06710
Cytogenetics:	2q14.1
Protein Families:	Druggable Genome, Transcription Factors
Protein Pathways:	Pathways in cancer, Thyroid cancer
Gene Summary:	This gene encodes a member of the paired box (PAX) family of transcription factors. Members of this gene family typically encode proteins that contain a paired box domain, an octapeptide, and a paired-type homeodomain. This nuclear protein is involved in thyroid follicular cell development and expression of thyroid-specific genes. Mutations in this gene have been associated with thyroid dysgenesis, thyroid follicular carcinomas and atypical follicular thyroid adenomas. Alternatively spliced transcript variants encoding different isoforms have been described. [provided by RefSeq, Mar 2010]