

Product datasheet for **RG215685**

RAD51AP2 (NM_001099218) Human Tagged ORF Clone

Product data:

Product Type: Expression Plasmids
Product Name: RAD51AP2 (NM_001099218) Human Tagged ORF Clone
Tag: TurboGFP
Symbol: RAD51AP2
Mammalian Cell Selection: Neomycin
Vector: pCMV6-AC-GFP (PS100010)
E. coli Selection: Ampicillin (100 ug/mL)
ORF Nucleotide Sequence: >RG215685 representing NM_001099218
Red=Cloning site Blue=ORF Green=Tags(s)

TTTTGTAATACGACTCACTATAGGGCGGCCGGGAATTCGTCGACTGGATCCGGTACCGAGGAGATCTGCC
GCC**CGATCGCC**

ATGTCTCTCCCTCAGCCACGCCGCGGATGGCCGAGCTCAGAAAGCCTACCTCCTCTTTAACGCCTCCTG
AGGACCCGGATCCCAACCACCTAGTAGCAAGCGGCTCTGTCTTGAGGAGCCTGGAGGTGTCTTTAAGGC
GGGCTGGCGACTGCCTCTGGTGCCTCGCTTGCTGAGGCGGAAAAAGTCTGGGAGTTGTCCCCTAGACCC
TTCAAGGGACTCCTTGTTTCAACGAATGCTATTTTCGATAACTCCACAGACTCGTGTGTGGAGAAATCAG
TCAGTGGGAAGCAGATATGTAATCTGAAATGCTCAAATCTCAAATTCCAAATGAGTAGCTGTTTGACGT
TCCCCCTCACAAAGTCCTGATTCTGATTTGAGGGCTTCAGGAAGTCTGAGGCAGGCCTGCATGACAGA
GAGGCTTTCAGTGTGCACCGCAGTAATAGCTCCAAAGCAGGGTTAGTCAACTTCTGCCAGCACCTCTA
TACACGATATACATGGAATTAGAAATGAGAATCGAAAACAACAGTTTGTCCAAGGAAGAGACAATGTTCA
CAAAGAAAATCCATTTTATAGATGTTACCTTTTACAAGGAACTAAATCACCATTTTCATGAAATTAAGAAC
AGATGTAAGCTAACAGTGTGTGCCATCAAATAAAGAGAAAAAACAATTTTCATCATCTGTACTAAAA
TATCAAATCTCAAACCAGCCAGCTTGGAATTGCCAAACCTAGCTATTTTAGAGATAGCGGCACAAT
AAGTGCCCTCAGTTTCCAATGGACTTAAATAGCAAAATGTCCTCTGTCTATTTAAAGGAAATAGCGAAG
AAAAAGAATGACAAAAAGAGGCATATGTTAGGGATTTCAAAACATTTACTGGTCCCAAATAGACCTG
ATGTTAAGAAGCAAAAGTTACAGAATGATAAAAAACTGTAGAAGCGGAAAACATTTTTTCCAAATGTTA
TGAAAAATGACTACCCATCACTCAGTAGCCAAAATCTTGTAAAGAGAAAAGACTTGATCAGTTCAACTAC
TGTAATCGCAGTAGTATCCAGTGAATGTAAGAGACTCTAGAAAAGATTTTCGCTATACTAGAAAATGCAA
ATTGGGAGGAAGCAGAATGTCTGGACAGTTACGTACTTACCAGGCTGGAAAAATCTCAAACCTGGGACTG
TAACGTTAGACATATTTTGAAGAAAATAGAGGAAATGTTGGATTATAAATAATTGCAAGACTAAATGT
GAAAATATGAAAAAACTGAAGAAAAATGGAATGGCTATTATTAGAAAATAGACCTTTTAAGCAAGG
AAGATTACCACTGTGCAAAAGTCATCAATGCATATGAAGAACAATCAAAGCTTCTCGTAAGAGAAAATATT
AGGTAGTCAGACAGCTTTAATAACGACTGTTGGCTAAATGGTAAAGGAGAAAATGATAACTCTACAG
TTGAGATACAATACTACAAAAAGCTTTTCATGTGAACAACCCCTTTTGAAGTTTCATTATAGAAATTT
TTATTTCCATAAAAGTATTTTCAGGAAATAAAAAGATAATAGTATTTTAACTGCTGTAACATTTTGAA



[View online >](#)

```

GTGTA AAAAGCAAAT TGGTATAATTGGTATTCAA AATCTAATAACCAGAAACATGAATACAAATATAAAG
AATGGAATTTTAAGCATATATTTACAAGATAGTGTTCAGAACCTTTAGATATTCTATTGAAAACAAACA
TAGCTTTTTTGTCTCAATAACTTTGACTCTTTAAACAAGAATTGAAAATGATTTTGAATTAGAAGAGGAATG
CATTTTCAAGTGCATGCTTTATTTGAAGTATCCAAAAATATAGTGGA AAAATCATACTGCATATCTAGTA
AAGATTTTAACTTCTTCAAGACTATTAGAAGATAATATGAAACCTATGTTAAAGAAAAGGAAGTTATTTA
GAAGTGAACAAGTTTTTGA AAGTCTAAGAAAAAACTCATTAAATCCCTTCAGTATGACAACTCAAATAAC
AGGTTTTCCGATTTTTGAAACATATGAAAAAATCCCCCTTTTAAATGGACTTTGATGACATGGATGAAAT
TCTTTAATAAGAGAAATTA CTGTGAGAAATAGAGTTGTCTCAACAAGTTGTAATGTGAAAAATTGGG
CTCACTATAATTCTAGTACTGTTAAAGCACATGGTAATTCTTGTCTCAATTTATACAGAACAACCGAGG
ATACATTAATGAAAATTTTATGAAGTAAATATGCACAGCCAAGATTTAAATATGGAAAAGAAAACAGGGA
CATAATAAGATCAGTAACTTTGACTGTGAGCACATATTTGAAGATCTCTGCAATGTTAGGCAACAGGCCA
TACCAGCAAGCCACAACATAATACATAATGAAGAGACCCATACCCTTCTATAACTCAAGTACTAAATTT
TTGGAAGTCTAAGTGAATAGAAGAAAAAAATATGACTTAATTTTGAAGAGGAAGTAAAAGTCACA
GCTGAAAGTTTAACAAATAGTTGCCAAGTTCACAAAGATACTAAGATAGAAAAGGAAGAGAAAGATAGTT
TTTTTCCAATGGATGACATGTTTTCTGTACAGTCAGTTTCATTAATAAGTAAGGAAGTAAATGTGGAAGA
AAATAAATATGTTAATCAA AATTAATGTAACAAATACAAATGAATATGAGAGTATTTTGCCAGAAAGGGAG
ATAGCTAATTCAAAGGATTTTCACAGAAAAGTACTCTGCATTATATATTAATCATCAATTTGAAACTG
GTCTGAGTGAAGGGAATGATGAATGTTTTCAGGACTTAGCTGCTAAAATTTATCAACAGAAGCTCTGAC
AATAGTAAAAGATTTTGAGATGAAGAGAAAATTTGACTTAGTACTTGAAGAACTTCGTATGTTTCATGAA
ATTAGTAGGAAAATGA ACTTCTAAGCACTGTGGAACAAACAATGGGCAAGAAAATTA CTTTGGAGAAA
ATGATGCTGAGAAGGTAAAAATGGAGATAGAAAAAGATTTGAAAATGGTTGTGGTCAACAAAATACGTGC
ATCTTCTCGTTCCATGATACTATAGCAGTCTAATATGGGCAAAAAGTACCAAAGTTTATTTAAATGG
AAAAGTACCAAATAATGGAGAACAGGAAGTCTAATGAGAGTTGTTATCCAAGTACTGACAGGAAG
AATTA CTTTACTCTACTTCTGAGAAAGATTGTGAAACACCTTTACCTAAAAGACCTTTTCTCCCTGA
TGAATGTAAGAAGAATTTAATTTATTGAGAGGAGGTAGTCACTTTCCACATGGCATTTC AAGAGTA
CGACCCTTAAGACATGCAGTAGGCAATCAGGATTGGTTGTCAAGAAAAGCAAGGATTAACA ACTTC
ATCCTTATCTGAAACAAATGTGTACGAAA CTAAAAGAAAATTTT
    
```

ACGCGTACGCGGCCGCTCGAG - GFP Tag - GTTTAA

Protein Sequence:

>RG215685 representing NM_001099218

Red=Cloning site Green=Tags(s)

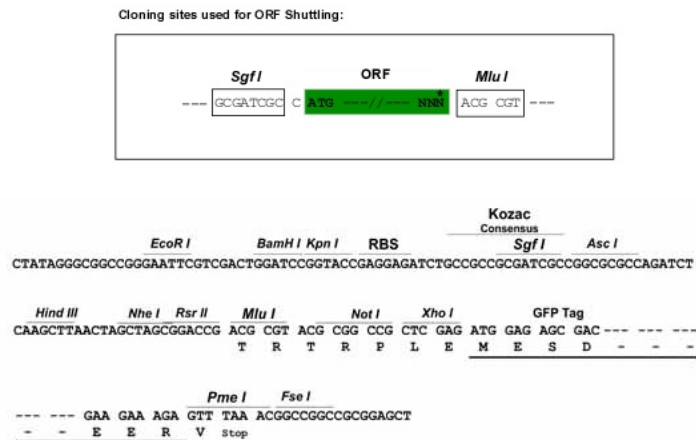
```

MSLPQPTPRMAELRKPTSSLTPPEDPDSQPPSSKRLCLEEPGGVFKAGWRLPLVPRLSEA EKVWELSPRP
FKGLLVSTNAIFDNSTDCVEKSVSGKQICNLKCSNLKFMSSCLQSPSPQSPDSDLRASGRSEAGLHDR
EAFSVHRSNSSKAGVSQLLPSTSIHDIHGIRNENRKQQFVQGRDNVHKENPFLDVTFYKETKSPFHEIKN
RCKANSVVP SNKRENNISSSVLKISKSNQPSLEIAKPSYFRDSGTISVPQFPMDLNSKMSSVYLKEIAK
KKNDKKEAYVRDFNIYWSQNRPDVKKQKLQNDKKTVEAENIFSKCYENDYPSLSSQNTCKRKDLISSNY
CNCSSIQCNVRSRKNFAILENANWEEAECLDSYVLRLEKSNWDCNVRHILRRNRGNCWIIINCKTKC
ENMKKTEEKWNWLLLLLEIDLKSKEDYHCAKVINAYEEQSKLLVREILGSQTALITTVWLNGKGENDTLQ
LRYNTTQKVFHVNNPFESFIIIEIFYFHKSISGNKKNDSILTCCNILKCKKQIGIIGIQNLITRNMNTNIK
NGILSIYLDQSVSEPLDILLKTNIAFLNNFDSLTRIENDFELEEEICFKCMLYLKYPKNIVENHTAYLV
KILTSSRLLEDNMKPMKKRKLFRTEQVFEKSKKLLINSFSMTTQNTGFPFIFETYEKIPLLMDFDDMDEI
SLIREITCQNMSCPQQVVNVENWAHYNSSVKAHGNSCPQFIQNNRGYINENFYEVNMSQDLNMRKQG
HNKISNFDCEHIFEDLCNVRQQAIPASHNIIHNEETHHTSITQVLFNFWLLSEIEEKKYDLILKEEVKVT
AESLTNSCQVHKDTKIEKEEKDSFFPMDDMFSVQSVSLISKEVNVEENKVVNQNYVTNTNEYESILPERE
IANSKDFHRKNDSALYINHQFETGLSEGNDECQDLAAKYLSTEALTIVKDFEMKRKFDLVEELRMFHE
ISRENELLSTVETNNGQENYFGENDAEKVKMEIEKDLKMYVVNKIRASSSFHDTIAGPNMGKSHQSLFKW
KTPVNNGEQEVPNE SCYPSRSEEEELLYSTSEKDCETPLPKRPAFLPDECKEEFNLYLLRGGSHFPHGISRV
RPLKTCRPIRIGLSRKARIKQLHPYLKQMCYGNLKENF
    
```

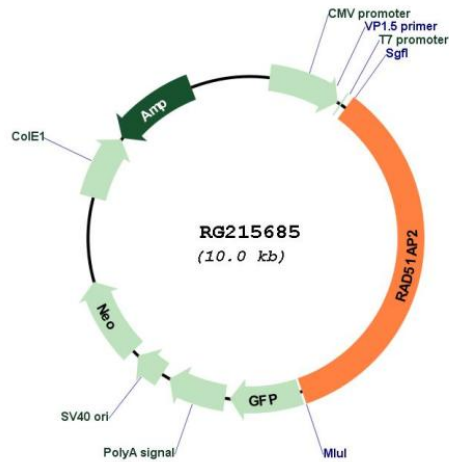
TRTRPLE - GFP Tag - V

Restriction Sites: SgfI-MluI

Cloning Scheme:



Plasmid Map:



ACCN: NM_001099218

ORF Size: 3477 bp

OTI Disclaimer: The molecular sequence of this clone aligns with the gene accession number as a point of reference only. However, individual transcript sequences of the same gene can differ through naturally occurring variations (e.g. polymorphisms), each with its own valid existence. This clone is substantially in agreement with the reference, but a complete review of all prevailing variants is recommended prior to use. [More info](#)

OTI Annotation: This clone was engineered to express the complete ORF with an expression tag. Expression varies depending on the nature of the gene.

Components:	The ORF clone is ion-exchange column purified and shipped in a 2D barcoded Matrix tube containing 10ug of transfection-ready, dried plasmid DNA (reconstitute with 100 ul of water).
Reconstitution Method:	<ol style="list-style-type: none">1. Centrifuge at 5,000xg for 5min.2. Carefully open the tube and add 100ul of sterile water to dissolve the DNA.3. Close the tube and incubate for 10 minutes at room temperature.4. Briefly vortex the tube and then do a quick spin (less than 5000xg) to concentrate the liquid at the bottom.5. Store the suspended plasmid at -20°C. The DNA is stable for at least one year from date of shipping when stored at -20°C.
RefSeq:	<u>NM_001099218.3</u>
RefSeq Size:	3589 bp
RefSeq ORF:	3480 bp
Locus ID:	729475
UniProt ID:	<u>Q09MP3</u>
Cytogenetics:	2p24.2