

Product datasheet for **RG215681**

SFTPA1 (NM_001093770) Human Tagged ORF Clone

Product data:

Product Type:	Expression Plasmids
Product Name:	SFTPA1 (NM_001093770) Human Tagged ORF Clone
Tag:	TurboGFP
Symbol:	SFTPA1
Synonyms:	COLEC4; PSAP; PSP-A; PSPA; SFTP1; SFTPA1B; SP-A; SP-A1; SP-A1 beta; SP-A1 delta; SP-A1 epsilon; SP-A1 gamma; SPA; SPA1
Mammalian Cell Selection:	Neomycin
Vector:	pCMV6-AC-GFP (PS100010)
E. coli Selection:	Ampicillin (100 ug/mL)
ORF Nucleotide Sequence:	>RG215681 representing NM_001093770 Red=Cloning site Blue=ORF Green=Tags(s)

TTTTGTAATACGACTCACTATAGGGCGGCCGGAATTCGTCGACTGGATCCGGTACCGAGGAGATCTGCC
GCC**GCGATCGCC**

ATGAGGCCATGCCAGGTGCCAGGAGCAGCGACTGGACCCAGAGCCATGTGGCTGTGCCCTCTGGCCCTCA
ACCTCATCTTGATGGCAGCCTCTGGTGCTGTGTGCGAAGTGAAGGACGTTTGTGTTGGAAGCCCTGGTAT
CCCCGGCACTCCTGGATCCCACGGCCTGCCAGGCAGGGACGGGAGAGATGGTCTCAAAGGAGACCCTGGC
CCTCCAGGCCCATGGGTCCACCTGGAGAAATGCCATGTCCTCCTGGAAATGATGGGCTGCCTGGAGCCC
CTGGTATCCCTGGAGAGTGTGGAGAGAAGGGGAGCCTGGCGAGAGGGGCCCTCCAGGGCTTCCAGCTCA
TCTAGATGAGGAGCTCCAAGCCACTCCACGACTTTAGACATCAAATCCTGCAGACAAGGGGAGCCCTC
AGTCTGCAGGGCTCCATAATGACAGTAGGAGAGAAGGTCTTCTCCAGCAATGGGCAGTCCATCACTTTTG
ATGCCATTCAGGAGGCATGTGCCAGAGCAGGCGCGCATTGCTGTCCAAGGAATCCAGAGGAAAATGA
GGCCATTGCAAGCTTCGTGAAGAAGTACAACACATATGCCTATGTAGGCCTGACTGAGGGTCCCAGCCCT
GGAGACTTCCGCTACTCAGACGGGACCCCTGTAACACTACCAACTGGTACCGAGGGGAGCCCGCAGGTC
GGGAAAAGAGCAGTGTGTGGAGATGTACACAGATGGGCAGTGGAAATGACAGGAACTGCCTGTACTCCCG
ACTGACCATCTGTGAGTTC

ACGCGTACGCGGCCGCTCGAG - GFP Tag - GTTTAA



[View online »](#)

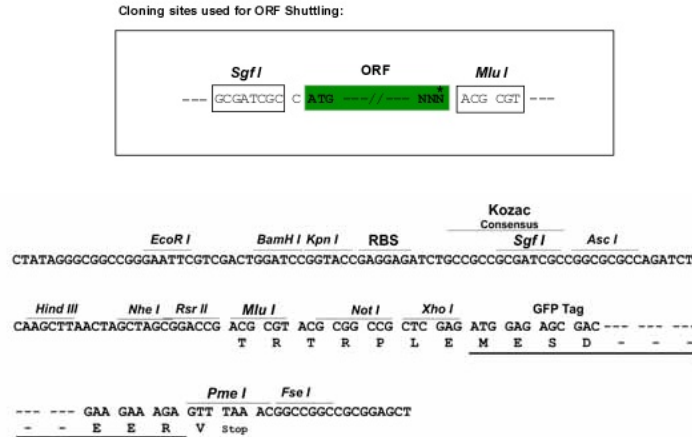
Protein Sequence: >RG215681 representing NM_001093770
 Red=Cloning site Green=Tags(s)

MRPCQVPGAATGPRAMWLCPLALNLIILMAASGAVCEVKDVCVSPGIPGTPGSHGLPGRDGRDGLKGDGP
 PPGMPGPPGEMPCPPGNDGLPGAPGIPGECGKGEPPERGPPGLPAHLDEELQATLHDFRHQILQTRGAL
 SLQGSIMTVGEKVFSSNGQSITFDAIQEACARAGGRIAVPRNPEENEIASFVKKYNTYAYVGLTEGPSP
 GDFRYSDDGTPVNYTNWYRGEPAGRGKEQCVEMYTDGQWNRNCLYSRLTICEF

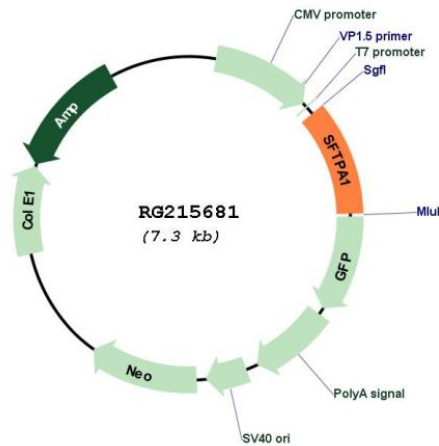
TRTRPLE - GFP Tag - V

Restriction Sites: SgfI-MluI

Cloning Scheme:



Plasmid Map:



ACCN: NM_001093770

ORF Size: 789 bp

OTI Disclaimer:	<p>Due to the inherent nature of this plasmid, standard methods to replicate additional amounts of DNA in E. coli are highly likely to result in mutations and/or rearrangements. Therefore, OriGene does not guarantee the capability to replicate this plasmid DNA. Additional amounts of DNA can be purchased from OriGene with batch-specific, full-sequence verification at a reduced cost. Please contact our customer care team at custsupport@origene.com or by calling 301.340.3188 option 3 for pricing and delivery.</p> <p>The molecular sequence of this clone aligns with the gene accession number as a point of reference only. However, individual transcript sequences of the same gene can differ through naturally occurring variations (e.g. polymorphisms), each with its own valid existence. This clone is substantially in agreement with the reference, but a complete review of all prevailing variants is recommended prior to use. More info</p>
OTI Annotation:	This clone was engineered to express the complete ORF with an expression tag. Expression varies depending on the nature of the gene.
Components:	The ORF clone is ion-exchange column purified and shipped in a 2D barcoded Matrix tube containing 10ug of transfection-ready, dried plasmid DNA (reconstitute with 100 ul of water).
Reconstitution Method:	<ol style="list-style-type: none"> 1. Centrifuge at 5,000xg for 5min. 2. Carefully open the tube and add 100ul of sterile water to dissolve the DNA. 3. Close the tube and incubate for 10 minutes at room temperature. 4. Briefly vortex the tube and then do a quick spin (less than 5000xg) to concentrate the liquid at the bottom. 5. Store the suspended plasmid at -20°C. The DNA is stable for at least one year from date of shipping when stored at -20°C.
RefSeq:	NM_001093770.3
RefSeq Size:	2219 bp
RefSeq ORF:	792 bp
Locus ID:	653509
UniProt ID:	Q8IWL2
Cytogenetics:	10q22.3
Gene Summary:	<p>This gene encodes a lung surfactant protein that is a member of a subfamily of C-type lectins called collectins. The encoded protein binds specific carbohydrate moieties found on lipids and on the surface of microorganisms. This protein plays an essential role in surfactant homeostasis and in the defense against respiratory pathogens. Mutations in this gene are associated with idiopathic pulmonary fibrosis. Alternate splicing results in multiple transcript variants. [provided by RefSeq, May 2010]</p>