

Product datasheet for **RG215668**

LGALS14 (NM_203471) Human Tagged ORF Clone

Product data:

Product Type: Expression Plasmids
Product Name: LGALS14 (NM_203471) Human Tagged ORF Clone
Tag: TurboGFP
Symbol: LGALS14
Synonyms: CLC2; PPL13
Mammalian Cell Selection: Neomycin
Vector: pCMV6-AC-GFP (PS100010)
E. coli Selection: Ampicillin (100 ug/mL)
ORF Nucleotide Sequence: >RG215668 representing NM_203471
Red=Cloning site Blue=ORF Green=Tags(s)

TTTTGTAATACGACTCACTATAGGGCGGCCGGAATTCGTCGACTGGATCCGGTACCGAGGAGATCTGCC
GCC**CGGATCGCC**

ATGTCCCTGACCCACAGGCTTCATTTGTGCAAGTACTGGGGCTGTGCTGTCAGTAATGTGTGCCGTTCT
GGGAAGGACGTCCATTGCCCTTGATGATTGTGGTACCATACACTGCCTGTTTCCTTGCCTGTTGGTTC
GTGCGTGATAATCACAGGGACACCGATCCTCCTTTTGTCAAGGACCCACAGCTGGAGGTGAATTTCTAC
ACTGGGATGGATGAGGACTCAGATATTGCTTTCCAATTCGACTGCCTTTGGTCATCCTGCAATCATGA
ACAGTTGTGTGTTGGCATATGGAGATATGAGGAGAAATGCTACTATTTACCTTTGAAGATGGCAAACC
ATTTGAGCTGTGCATCTATGTGCGTCACAAGGAATACAAGGTAATGGTAAATGGCCAACGATTTACAAC
TTTGCCCATCGATTCCCGCCAGCATCTGTGAAGATGCTGCAAGTCTTCAGAGATATCTCCCTGACCAGAG
TGCTTATCAGCGAT

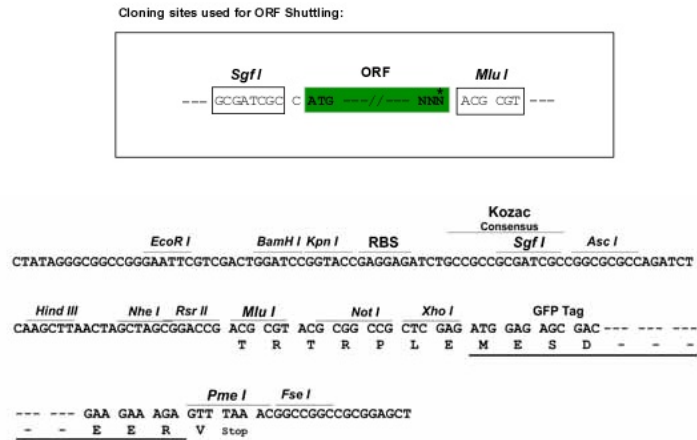
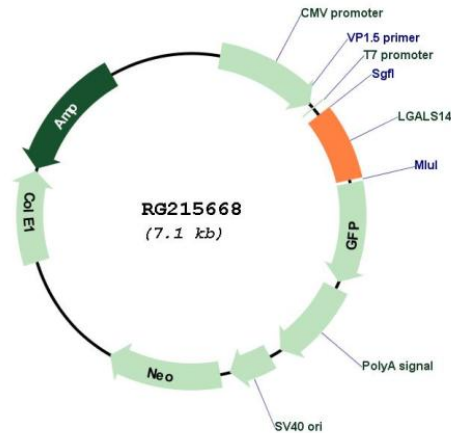
ACGCGTACGCGGCCGCTCGAG - GFP Tag - GTTTAA

Protein Sequence: >RG215668 representing NM_203471
Red=Cloning site Green=Tags(s)
MSLTHRLHLCKYWCAVSNVCRFWEGRPLPLMIVVPTLTPVSLPVGSCVITGTPILTFVKDPQLEVNFI
TGMDSDIAFQFRLHFGHPAIMNSCVFGIWRYEKCYLLPFEDGKPFELCIYVRHKEYKVMVNGQRIYN
FAHRFPPASVKMLQVFRDISLTRLISD

TRTRPLE - GFP Tag - V

Restriction Sites: Sgfl-MluI



Cloning Scheme:

Plasmid Map:


ACCN: NM_203471

ORF Size: 504 bp

OTI Disclaimer: The molecular sequence of this clone aligns with the gene accession number as a point of reference only. However, individual transcript sequences of the same gene can differ through naturally occurring variations (e.g. polymorphisms), each with its own valid existence. This clone is substantially in agreement with the reference, but a complete review of all prevailing variants is recommended prior to use. [More info](#)

OTI Annotation: This clone was engineered to express the complete ORF with an expression tag. Expression varies depending on the nature of the gene.

Components:	The ORF clone is ion-exchange column purified and shipped in a 2D barcoded Matrix tube containing 10ug of transfection-ready, dried plasmid DNA (reconstitute with 100 ul of water).
Reconstitution Method:	<ol style="list-style-type: none">1. Centrifuge at 5,000xg for 5min.2. Carefully open the tube and add 100ul of sterile water to dissolve the DNA.3. Close the tube and incubate for 10 minutes at room temperature.4. Briefly vortex the tube and then do a quick spin (less than 5000xg) to concentrate the liquid at the bottom.5. Store the suspended plasmid at -20°C. The DNA is stable for at least one year from date of shipping when stored at -20°C.
RefSeq:	<u>NM_203471.2</u>
RefSeq Size:	1099 bp
RefSeq ORF:	507 bp
Locus ID:	56891
UniProt ID:	<u>Q8TCE9</u>
Cytogenetics:	19q13.2
Protein Families:	Transmembrane
Gene Summary:	This gene is predominantly expressed in placenta. The encoded protein belongs to the galectin (galactin/S-lectin) family. The members of galectin family contain one or two carbohydrate recognition domains, which can bind beta-galactoside. Two alternatively spliced transcript variants encoding distinct isoforms have been observed. [provided by RefSeq, Jul 2008]