

Product datasheet for **RG215662**

PTPN22 (NM_012411) Human Tagged ORF Clone

Product data:

Product Type:	Expression Plasmids
Product Name:	PTPN22 (NM_012411) Human Tagged ORF Clone
Tag:	TurboGFP
Symbol:	PTPN22
Synonyms:	LYP; LYP1; LYP2; PEP; PTPN8; PTPN22.5; PTPN22.6
Mammalian Cell Selection:	Neomycin
Vector:	pCMV6-AC-GFP (PS100010)
E. coli Selection:	Ampicillin (100 ug/mL)



[View online »](#)

ORF Nucleotide
Sequence:

>RG215662 representing NM_012411
 Red=Cloning site Blue=ORF Green=Tags(s)

TTTTGTAATACGACTCACTATAGGGCGGCCGGAATTCGTCGACTGGATCCGGTACCGAGGAGATCTGCC
 GCCCGCATCGCC

ATGGACCAAGAGAAATTCTGCAGAAGTTCCTGGATGAGGCCAAAGCAAGAAAATTACTAAAGAGGAGT
 TTGCCAATGAATTTCTGAAGCTGAAAAGGCAATCTACCAAGTACAAGGCAGACAAAACCTATCCTACAAC
 TGTGGCTGAGAATGCCAAGAATATCAAGAAAAACAGATATAAGGATATTTTGGCCCTATGATTATAGCCGG
 GTAGAACTATCCCTGATAACCTCTGATGAGGATCCAGCTACATCAATGCCAACTTCATTAAGGGAGTTT
 ATGGACCAAGGCTTATATTGCCACCCAGGGTCTTTTCTACAACCTCCTGGACTTCTGGAGGATGAT
 TTGGGAATATAGTGTCTTATCATTGTTATGGCATGCATGGAGTATGAAATGGGAAAGAAAAAGTGTGAG
 CGCTACTGGGCTGAGCCAGGAGAGATGCAGCTGGAATTTGGCCCTTCTCTGTATCCTGTGAAGCTGAAA
 AAAGGAAATCTGATTATATAATCAGGACTCTAAAAGTTAAGTTCAATAGTAAACTCGAACTATCTACCA
 GTTTCATTACAAGAATTGGCCAGACCATGATGTACCTTCATCTATAGACCCTATTCTTGAGCTCATCTGG
 GATGTACGTTGTTACCAAGAGGATGACAGTGTCCCATATGCATTCACTGCAAGTGTGGCTGTGGAAAGGA
 CTGGTGTATTTGTGCTATTGATTATACATGGATGTTGCTAAAAGATGGGATAATTCCTGAGAACTTCAG
 TGTTTTAGTTTGTATCCGGGAAATGCGGACACAGAGGCCTTCATTAGTTCAAACGCAGGAACAATATGAA
 CTGGTCTACAATGCTGTATTAGAATAATTAAGAGACAGATGGATGTTATCAGAGATAAACATTCCTGGAA
 CAGAGAGTCAAGCAAAGCATTGTATTCTGAGAAAAATCACACTCTCCAAGCAGACTCTTATTCTCCTAA
 TTTACCAAAAAGTACCACAAAAGCAGCAAAAATGATGAACCAACAAGGACAAAAATGGAATCAAAGAA
 TCTTCTCCTTTGACTTTAGGACTTCTGAAATAAGTGCAAAAAGAGAGCTAGTTTTGCACCCTGCTAAAT
 CAAGCACTTCTTTGACTTTCTGGAGCTAAATTACAGTTTTGACAAAAATGCTGACACAACCATGAAATG
 GCAGACAAAGGCATTTCCAATAGTTGGGAGCCTCTTCAGAAGCATCAAAGTTTGGATTTGGGCTCTCTT
 TTGTTTGAGGGATGTTCTAATTCTAAACCTGTAATGCAGCAGGAAGATATTTAATTCAAAGGTGCCAA
 TAACACGGACCAATCAACTCCTTTTGAATTGATACAGCAGAGAGAAACCAAGGAGGTGGACAGCAAGGA
 AAACCTTTCTTATTTGGAATCTCAACCACATGATTCTTGTGTTGTAGAGATGCAGGCTCAAAAAGTAATG
 CATGTTTCTTCAGCAGAAGTGAATTATTCAGTCCATATGACTCTAAACACCAAATACGTAATGCCTCTA
 ATGTAAGCACCATGACTCTAGTGCTCTTGGTGTATATTCTTACATACCTTTAGTGGAAAAATCCTTATTT
 TTCATCATGGCCTCCAAGTGGTACCAGTCTAAGATGTCTCTTGATTTACCTGAGAAGCAAGATGGAAC
 GTTTTTCTTCTCTCTGTTGCCAACATCCTCTACATCCCTCTTCTCTTATTACAATTCACATGATTCTT
 TATCACTGAATTCACCAATATTTCTCACTATTGAACCAGGAGTCAGCTGTACTAGCAACTGCTCC
 AAGGATAGATGATGAAATCCCCCTCCACTTCTGTACGGACACCTGAATCATTTATTGTGGTTGAGGAA
 GCTGGAGAATTCTACCAATGTTCCCAATCCTTATCCTCAGCTGTGAAGGTAAAAATTGGAACATCAC
 TGGAAATGGGGTGAACATCTGAACCAAGAAATTTGATGACTCTGTGATACTTAGACCAAGCAAGAGTGT
 AAAACTCCGAAGTCCTAAATCAGGTA AAAATTTCTCTTGGCTT

ACGCGTACGCGGCCGCTCGAG - GFP Tag - GTTTAA

Protein Sequence: >RG215662 representing NM_012411
 Red=Cloning site Green=Tags(s)

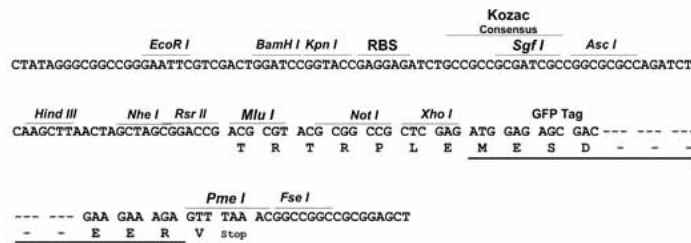
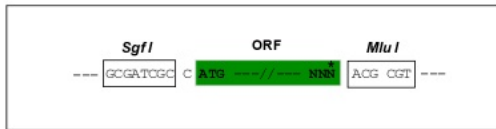
MDQREILQKFLDEAQS~~KKITKEEFAN~~FLKLRQSTKYKADKTYPTTVAENAKNIKKNRYKDILPYDYSR
 VELSLITSD~~EDSSYINANFIKGVY~~GPKAYIATQGPLSTLLDFWRMIWEYSVLIIVMACMEYEMGKKKCE
 RYWAEPGEMQLEFGPFSVSC~~EAEKRKSDYIIR~~TLKVKFNSETRTIYQFHYKNWPDHDPSSIDPILELIW
 DVRCYQEDD~~SVPICIHCSAGCGR~~TGVICAIDYTWMLLKDGIIPENFSVFSLI~~REMRTQ~~RPSLVQTQEY
 L~~VYNAVLEL~~FKRQMDVIRDKHSGTESQAKHC~~IPEKNHTL~~QADSYPNLPKSTTKAAKMMNQRTKMEIKE
 SSSFD~~FRTSEISAKEELV~~LHPAKSSTSFDFLELNYSFDKNADTTMKWQTKAFPIVGEPLQKHQSLDLGSL
 LFEGCSNSKPVNAAGRYFNSKVPITRTKSTPFELIQQRETKEVDSKENFSYLESQPHDSCFVEMQAQKVM
 HVSSAELNYS~~LPYDSKHQIRNASNV~~KHHDSALGVYSYIPLVENPYFSSWPPSGTSSKMSLDLPEKQDGT
 VFPSSLLPTSSTSLFSY~~YNHDSLSLNSPT~~NISSLLNQESAVLATAPRIDDEIPPLPVRTPE~~SFIVVEE~~
 AGEFSPNVPKSLSSAVKVKIGTSLEWGGTSEPKKFDDSVILRPSKSVKLRSPKSGKNFSWL

TRTRPLE - GFP Tag - V

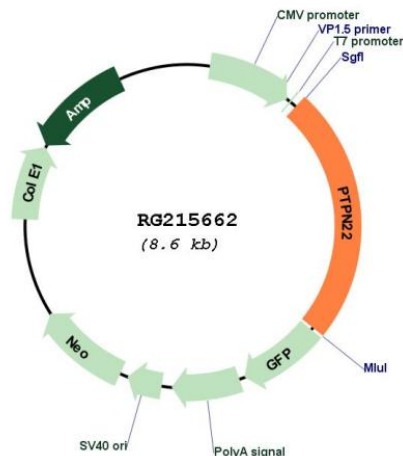
Restriction Sites: SgfI-MluI

Cloning Scheme:

Cloning sites used for ORF Shuttling:



Plasmid Map:



ACCN: NM_012411

ORF Size: 2073 bp

OTI Disclaimer: The molecular sequence of this clone aligns with the gene accession number as a point of reference only. However, individual transcript sequences of the same gene can differ through naturally occurring variations (e.g. polymorphisms), each with its own valid existence. This clone is substantially in agreement with the reference, but a complete review of all prevailing variants is recommended prior to use. [More info](#)

OTI Annotation: This clone was engineered to express the complete ORF with an expression tag. Expression varies depending on the nature of the gene.

Components: The ORF clone is ion-exchange column purified and shipped in a 2D barcoded Matrix tube containing 10ug of transfection-ready, dried plasmid DNA (reconstitute with 100 ul of water).

Reconstitution Method:

1. Centrifuge at 5,000xg for 5min.
2. Carefully open the tube and add 100ul of sterile water to dissolve the DNA.
3. Close the tube and incubate for 10 minutes at room temperature.
4. Briefly vortex the tube and then do a quick spin (less than 5000xg) to concentrate the liquid at the bottom.
5. Store the suspended plasmid at -20°C. The DNA is stable for at least one year from date of shipping when stored at -20°C.

RefSeq: [NM_012411.2](#), [NP_036543.2](#)

RefSeq Size: 2289 bp

RefSeq ORF: 2259 bp

Locus ID: 26191

UniProt ID: [Q9Y2R2](#)

Cytogenetics: 1p13.2

Domains: Y_phosphatase, PTPc_motif

Protein Families: Druggable Genome, Phosphatase

Gene Summary: This gene encodes of member of the non-receptor class 4 subfamily of the protein-tyrosine phosphatase family. The encoded protein is a lymphoid-specific intracellular phosphatase that associates with the molecular adapter protein CBL and may be involved in regulating CBL function in the T-cell receptor signaling pathway. Mutations in this gene may be associated with a range of autoimmune disorders including Type 1 Diabetes, rheumatoid arthritis, systemic lupus erythematosus and Graves' disease. Alternatively spliced transcript variants encoding distinct isoforms have been described. [provided by RefSeq, Mar 2009]