

Product datasheet for **RG215661**

MDA5 (IFIH1) (NM_022168) Human Tagged ORF Clone

Product data:

Product Type:	Expression Plasmids
Product Name:	MDA5 (IFIH1) (NM_022168) Human Tagged ORF Clone
Tag:	TurboGFP
Symbol:	MDA5
Synonyms:	AGS7; Hlcd; IDDM19; MDA-5; MDA5; RLR-2; SGMRT1
Mammalian Cell Selection:	Neomycin
Vector:	pCMV6-AC-GFP (PS100010)
E. coli Selection:	Ampicillin (100 ug/mL)
ORF Nucleotide Sequence:	>RG215661 representing NM_022168 Red=Cloning site Blue=ORF Green=Tags(s)

TTTTGTAATACGACTCACTATAGGGCGGCCGGAATTCGTCGACTGGATCCGGTACCGAGGAGATCTGCC
GCC**CGATCGCC**

ATGTGCAATGGGTATCCACAGACGAGAATTTCCGCTATCTCATCTCGTGCTTCAGGGCCAGGGTGAAAA
TGTACATCCAGGTGGAGCCTGTGCTGGACTACCTGACCTTTTCGCTGCAGAGGTGAAGGAGCAGATTCA
GAGGACAGTCGCCACCTCCGGGAACATGCAGGCAGTTGAACTGCTGCTGAGCACCTTGGAGAAGGGAGTC
TGGCACCTTGGTGGACTCGGAATTCGTGGAGGCCCTCCGAGAACCAGCAGCCCTCTGGCCGCCCGCT
ACATGAACCTGAGCTCACGGACTTGCCCTCTCCATCGTTTGGAGAACGCTCATGATGAATATCTCCAAC
GCTGAACCTCCTCAGCCCACTCTGGTGGACAAGCTTCTAGTTAGAGACGCTTGGATAAGTGCATGGAG
GAGGAAGTGTGACAATTGAAGACAGAAACCGGATTGCTGCTGCAGAAAAAATGGAAATGAATCAGGTG
TAAGAGAGCTACTAAAAAGGATTGTGCAGAAAGAAAACTGGTTCTCTGCATTTCTGAATGTTCTTCGTCA
AACAGGAAACAATGAACTGTCCAAGAGTTAACAGGCTCTGATTGCTCAGAAAGCAATGCAGAGATTGAG
AATTTATCACAAGTTGATGGTCTCAAGTGAAGAGCAACTTCTTTCAACCACAGTTCAGCCAAATCTGG
AGAAGGAGGTCTGGGTCATGGAGAATAACTCATCAGAATCATCTTTGCAGATTCTTCTGTAGTTTCAGA
ATCAGACACAAGTTTGGCAGAAGGAAGTGCAGCTGCTTAGATGAAAGTCTTGGACATAACAGCAACATG
GGCAGTGATTCAGGCACCATGGGAAGTATTGATGATGAAGAAATGTGGCAGCAAGAGCATCCCCGGAGC
CAGAAGTCCAGCTCAGGCCTTACCAAAATGGAAGTTGCCAGCCAGCCTTGGAAAGGGAAGAATATCATCAT
CTGCCTCCCTACAGGGAGTGGAAAAACAGAGTGGCTGTTTACATTGCCAAGGATCACTTAGACAAGAAG
AAAAAAGCATCTGAGCCTGGAAAAGTTATAGTTCTTGCAATAAGGTAAGTACTGCTAGTTGAACAGCTCTCC
GCAAGGAGTTCCAACATTTTGAAGAAATGGTATCGTGTATTGGATTAAGTGGTGATACCCAAGTAA
AATATCATTTCCAGAAGTTGTCAAGTCTGTGATATTATTATCAGTACAGCTCAAATCCTTGAAAAGTCC
CTCTAAACTGGAAAAATGGAGAAGATGCTGGTGTCAATTGTCAGACTTTCCCTCATTATCATTGATG
AATGTCATCACACCAACAAGAAGCAGTGTATAATAACATCATGAGGCATTATTTGATGCAGAAGTTGAA
AAACAATAGACTCAAGAAAGAAAAACAACCAAGTATTCCCTTCCCTCAGATACTGGGACTAACAGCTTCA



[View online >](#)

```
CCTGGTGTGGAGGGGCCACGAAGCAAGCCAAAGCTGAAGAACACATTTTAAAACATGTGCCAATCTTG
ATGCATTTACTATTTAAAACCTGTTAAAGAAAACCTTGATCAACTGAAAACCAAATACAGGAGCCATGCAA
GAAGTTTGCCATTGCAGATGCAACCAGAGAAGATCCATTTAAAGAGAACTTCTAGAAAATATGACAAGG
ATTCAACTTATTGTCAAATGAGTCCAATGTGAGATTTTGAAGTCAACCCTATGAACAATGGGCCATTC
AAATGGAAAAAAGCTGCAAAAAGAGGAAATCGCAAAGAACGTGTTTGTGCAGAACATTTGAGGAAGTA
CAATGAGGCCCTACAAATTAATGACACAATTCGAATGATAGATGCGTATACTCATCTTGAACCTTCTAT
AATGAAGAGAAAAGATAAGAAGTTTGCAGTCATAGAAGATGATAGTGATGAGGGTGGTATGATGAGTATT
GTGATGGTGATGAAGATGAGGATGATTTAAAGAAACCTTTGAAACTGGATGAAACAGATAGATTTCTCAT
GACTTTATTTTTTGAACAATAAAATGTTGAAAAGGCTGGCTGAAAACCCAGAATATGAAAATGAAAAG
CTGACCAAATTAAGAAATACCATAATGGAGCAATATACTAGGACTGAGGAATCAGCACGAGGAATAATCT
TTACAAAAACACGACAGAGTGCATATGCGCTTTCCAGTGGATTACTGAAAATGAAAATTTGCTGAAGT
AGGAGTCAAAGCCACCATCTGATTGGAGCTGGACACAGCAGTGAGTTCAAACCCATGACACAGAATGAA
CAAAAAGAAGTCATTAGTAAATTCGCACTGGAAAAATAATCTGCTTATCGCTACCACAGTGGCAGAAG
AAGGTCTGGATATTAAGAATGTAACATTGTTATCCGTTATGGTCTCGTACCAATGAAATAGCCATGGT
CCAGGCCCGTGGTCGAGCCAGAGCTGATGAGAGCACCTACGTCTGGTTGCTCACAGTGGTTCAGGAGTT
ATCGAACGTGAGACAGTTAATGATTTCCGAGAGAAGATGATGTATAAAGCTATACATTGTGTTCAAATA
TGAAACCAGAGGAGTATGCTCATAAGATTTTGAATTACAGATGCAAAGTATAATGGAAAAGAAAATGAA
AACCAAGAGAAATATTGCCAAGCATTACAAGAATAACCTATCACTAATAACTTTCTTTGAAAAACTGC
AGTGTGCTAGCCTGTTCTGGGAAGATATCCATGTAATTGAGAAAATGCATCACGTCAATATGACCCAG
AATTCAGGAACCTTACATTGTAAGAGAAAAACAAACACTGCAAAAAGAAGTGTGCCGACTATCAAATAAA
TGGTGAATCATCTGCAATGTGCCAGGCTTGGGGAACAATGATGGTGCACAAAGGCTTAGATTTGCTT
TGCTCAAATAAGGAATTTTGTAGTGGTTTTCAAAAATAATTCACAAAGAAAACAATACAAAAGATGGG
TAGAATTACCTATCACATTTCCAATCTTGACTATTGAGATGCTGTTTATTTAGTGATGAGGAT
```

ACGCGTACGCGGCCGCTCGAG – GFP Tag – GTTTAA

Protein Sequence:

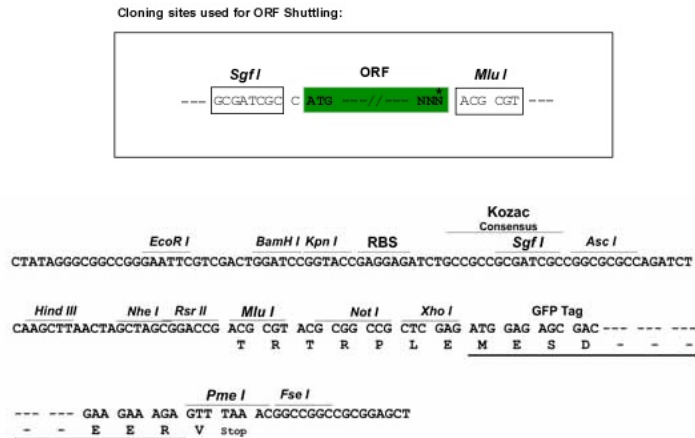
>RG215661 representing NM_022168
 Red=Cloning site Green=Tags(s)

```
MSNGYSTDENFRYLISCFRFRVVKMYIQVEPVLDYLTFLPAEVKEQIQRTVATSGNMQAVELLSTLEKGV
WHLGWTRFVEALRRTGSPLAARYMNPDLTLPSPSFENAHDEYLQLNLLQPTLVDKLLVRDVLDKCME
EELLTIEDRNRIAAAENNGNESGVRELLKRIVQKENWFS AFLNVL RQTGNNELVQELTGSDCSESNAEIE
NLSQVDGPPQVEEQLLSTTVQPNLEKEVWGMENSSSESSADSSVSESDTSLAEGSVSCLDES LGHNSNM
GSDSGTMGSDSDEENVAARASPEPELQLRPYQMEVAQPALLEGKNIICLPTGSGKTRVAVYIAKDHLDDK
KKASEPGKVIIVLNKVLVLEQLFRKEFPFLKKWYRVIGLSGDTQLKISFPEVVKSCDIIISTAQILENS
LLNLENGEDAGVQLSDFSLIIDECHHTNKEAVYNNIMRHYLMQKLNKNNRLKKNKPVIPILPQILGLTAS
PGVGGATKQAKAEHILKLCANLDAFTIKTVKENLDQLKNQIQEPCKKFAIADATREDPFKEKLEIMTR
IQTYCQMSPMDFGTQPYEQWAIQMEKKAKEGNRERVCAEHLRKYNEALQINDTIRMIDAYTHLET FY
NEEKDKKFAVIEDDSDEGGDEYCDGDEDEDLKPLKLDDETRFLMTLFFENKMLKRLAENPEYENEK
LTKLRNTIMEQYTRTEESARGIIFTKTRQSAYALSQWITENEKFAEVGVKAHHLIGAGHSSEFKPMTQNE
QKEVISKFRGTGKINLLIATTVAEEGLDIKECNIVIRYGLVTNEIAMVQARGRARADESTYVLAHSGSGV
IEHETVNDFREKMMYKAIHCQVNMKPEEYAHKILELQMQSIMEKKMKTKRNI AKHYKNNPSLITFLCKNC
SVLACSGEDIHVIEKMHHVNMTPFEKELYIVRENKALQKKADYQINGEIIICKCGQAWGTMVHKGLDLP
CLKIRNFVVVFKNNSTKKQYKKWVELPITFPNLDYSECCLFSD
```

TRTRPLE – GFP Tag – V

Restriction Sites:

SgfI-MluI

Cloning Scheme:


ACCN: NM_022168

ORF Size: 3075 bp

OTI Disclaimer: The molecular sequence of this clone aligns with the gene accession number as a point of reference only. However, individual transcript sequences of the same gene can differ through naturally occurring variations (e.g. polymorphisms), each with its own valid existence. This clone is substantially in agreement with the reference, but a complete review of all prevailing variants is recommended prior to use. [More info](#)

OTI Annotation: This clone was engineered to express the complete ORF with an expression tag. Expression varies depending on the nature of the gene.

Components: The ORF clone is ion-exchange column purified and shipped in a 2D barcoded Matrix tube containing 10ug of transfection-ready, dried plasmid DNA (reconstitute with 100 ul of water).

Reconstitution Method:

1. Centrifuge at 5,000xg for 5min.
2. Carefully open the tube and add 100ul of sterile water to dissolve the DNA.
3. Close the tube and incubate for 10 minutes at room temperature.
4. Briefly vortex the tube and then do a quick spin (less than 5000xg) to concentrate the liquid at the bottom.
5. Store the suspended plasmid at -20°C. The DNA is stable for at least one year from date of shipping when stored at -20°C.

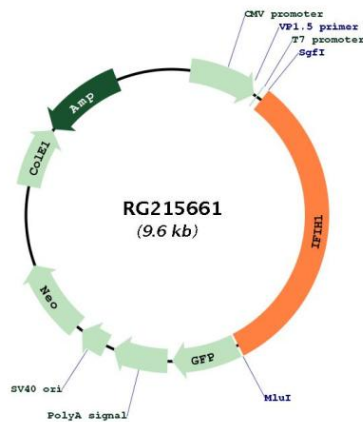
RefSeq: [NM_022168.2](#), [NP_071451.2](#)

RefSeq Size: 3434 bp

RefSeq ORF: 3078 bp

Locus ID:	64135
UniProt ID:	Q9BYX4
Cytogenetics:	2q24.2
Domains:	DEAD, helicase_C
Protein Pathways:	RIG-I-like receptor signaling pathway
Gene Summary:	IFIH1 encodes MDA5 which is an intracellular sensor of viral RNA that triggers the innate immune response. Sensing RNA length and secondary structure, MDA5 binds dsRNA oligonucleotides with a modified DExD/H-box helicase core and a C-terminal domain, thus leading to a proinflammatory response that includes interferons. It has been shown that Coronaviruses (CoVs) as well as various other virus families, are capable of evading the MDA5-dependent interferon response, thus impeding the activation of the innate immune response to infection. MDA5 has also been shown to play an important role in enhancing natural killer cell function in malaria infection. In addition to its protective role in antiviral responses, MDA5 has been implicated in autoimmune and autoinflammatory diseases such as type 1 diabetes, systemic lupus erythematosus, and Aicardi-Goutieres syndrome[provided by RefSeq, Jul 2020]

Product images:



Circular map for RG215661