

Product datasheet for **RG215646**

BAT3 (BAG6) (NM_080703) Human Tagged ORF Clone

Product data:

Product Type:	Expression Plasmids
Product Name:	BAT3 (BAG6) (NM_080703) Human Tagged ORF Clone
Tag:	TurboGFP
Symbol:	BAT3
Synonyms:	BAG-6; BAT3; D6S52E; G3
Mammalian Cell Selection:	Neomycin
Vector:	pCMV6-AC-GFP (PS100010)
E. coli Selection:	Ampicillin (100 ug/mL)
ORF Nucleotide Sequence:	>RG215646 representing NM_080703 Red=Cloning site Blue=ORF Green=Tags(s)

TTTTGTAATACGACTCACTATAGGGCGGCCGGAATTCGTCGACTGGATCCGGTACCGAGGAGATCTGCC
GCC**CGATCGCC**

ATGGAGCCTAATGATAGTACCAGTACCGCTGTGGAGGAGCCTGACAGCTTGGAGGTGTTGGTGAAGACCT
TGGACTCTCAAACCTCGTACCTTTATTGTGGGGGCCAGATGAATGTAAGAGTTAAGGAGCACATTGC
TGCTCTGTGACGATCCCATCTGAAAAACAACGGCTCATTTACCAGGGACGAGTTCTGCAAGATGATAAG
AAGCTTCAGGAATACAATGTTGGGGAAAGTTATCCACCTGGTGAACGGGCTCCTCCTCAGACTCACC
TCCCTTCTGGGGCATCTTCTGGGACGGGTCTGCCTCAGCCACTCATGGTGGGGATCCCCCTGGTAC
TCGGGGGCTGGGCCTCTGTTTCATGACCGGAATGCCAACAGCTATGTCATGGTTGGAACCTTCAATCTT
CCTAGTGACGGCTCTGCTGTGGATGTTACATCAACATGGAACAGGCCCGATTGAGAGTGGACCCCGGG
TACGGCTGGTGTGGCTCAGCACATGATCAGGGATATACAGACCTTACTATCCCGGATGGAGTGTGAGG
AGGGCCCCAACCGCAGCACAGTACAGCCGCCCGCAGCCACCGGCTGTGACCCCGGAGCCAGTAGCCTTG
AGCTCTCAAACATCAGAACCAGTTGAAAGTGAAGCACCTCCCCGGGAGCCATGGAGGCAGAAGAAGTGG
AGGAGCGTGGCCAGCCAGAACCCGGAGCTCACTCCTGGCCAGCCCCAGCGGGCCCAACCTGCCCC
GGAAACAATGCACCAACCATCCTTCCCTGCGGAGTATGTCGAGGTGCTCCAGGAGCTACAGCGGCTG
GAGAGTCGCTCCAGCCCTTCTTGACGCGTACTACGAGTTCTGGTGTGCTGCCACCACGGACTACA
ATAACAATCACGAGGGCCGGGAGGAGGATCAGCGGTTGATCAACTTGGTAGGGGAGAGCCTGCGACTGCT
GGCAACACCTTTGTTGCACTGTCTGACCTGCGTGAATCTGGCCTGCACGCCCCACGACACCTGCAT
GTGGTCCGGCCTATGTCTCACTACACCACCCCATGGTGTCCAGCAGGCAGCCATTCCCATACAGATCA
ATGTGGGAACCACTGTGACCATGACAGGAAATGGGACTCGGCCCCCAACTCCCAATGCAGAGGCACC
TCCCCCTGGTCTGGCAGGCCTCATCCGTGGTCCGTCTTCTACCAATGTCGAGTCTCAGCTGAGGGG
GCTCCCCGCCAGGTCCAGTCCCCGCCAGCCACCGCCAGGGTCCATCCGATTTCCACCAGA
GTGTGAAACCCGTGGTTCATGATGCACATGAACATTCAAGATTCTGGCACACAGCCTGGTGGTGTCCGAG
TGCTCCACTGGCCCCCTGGGACCCCTGGTTCATGGCAAACCTGGGACAGCAGGTGCCAGGCTCCCA



[View online »](#)

```

ACAGCTCCAACCCGGGTGGTATTGCCCGGCCACTCCTCCACAGGCTCGGCCTCCCATCCTGGAGGGC
CCCCAGTCTCTGGGACACTGCAGGGCGCCGGTCTGGGTACCAATGCCTCGTTGGCCAGATGGTGAAGCGG
CCTTGTGGGGCAGCTTCTTATGCAGCCAGTCTTGTGGCTCAGGGGACCCAGGTATGGCTCCACCGCCA
GCCCTGCCACTGCTTCTGCCAGTGTGGCACCACCAACACAGCTACCACAGTGGCCCCGCTCTGGGG
GGCCTGCCAGCCTCCACCACCCTCAACCCTCCATGGTGTATCTTCACTTCTCAGTCTCTGGGGAA
CCTGTAGGGCCTGCAGGGCCAGGGCTGGAGGGTCTGGTGTGGCTTCTCCACCACACTGCTGGCGATG
CCTGGTCTCCCTGCCTTCTCCAAGGCATGACTGACTTCTTGCAGGCAACACAGACAGACAGTCCACCAC
CCCCACCTCTCCACCCACCACCTGCCCCAGAGCAGCAGACCATGCCCCACCAGGCTCCCTTCTGG
TGGCGCAGGGAGTCTGGAGGCCTGGGTCTTGGAGCCTGTACCAGGAGTTTTTTACCTCAGTGGTGCAG
GGTGTGCTCAGCTCCCTGCTGGGCTCCCTGGGGCTCGGGCTGGCAGCAGTAAAAGTATTGCTGCCTTCA
TACAACGCCTCAGTGGATCCAGCAACATCTTTGAGCCTGGAGCTGATGGGGCCCTGGATTCTTTGGGGC
CTTGCTTCTCTTGTGCCAGAACTTCTCTATGGTGGACGTAGTGTGCTTCTCCATGGGCATTTCCAG
CCACTACAACGGCTCCAGCCCCAGCTGCATCTTCTCCACCAGCACTACCTGGGTGGTCAAGAGCCCA
CAGCCAGTAACATCCGGATGGCAACCCACACATTGATCACGGGGCTAGAAGAGTATGTGCGGGAGAGTTT
TTCCTTGGTGCAGTTTCCAGCAGGTGTGGACATCATCCGGACAAACCTGGAATTTCTCCAAGAGCAGTTT
AATAGCATTGCTGCGCATGTGCTGCATTGCACAGATAGTGGATTTGGGGCCCGGTGCTGGAGTTGTGTA
ACCAAGGCCTGTTTGAATGCCTGGCCCTAAACCTGCACCTGCTTGGGGGGACAGCAGATGGAGCTTGTCTG
TGTATCAATGGCCGAATTCTGTCGTATGTCTCGTGGGGTGAATCCCTCCTTGGTGAAGTGGCTGACCACT
ATGATGGGACTGAGGCTTCAAGTGGTACTGGAGCAGATGCCTGTAGGCCCTGATGCCATTCTCAGATACG
TTCGCAGGGTGGTGTATCCCCCAGCCACTTCTGAGGAGCCATGGAAGTTTCAAGGAGCAGAAAGAGC
TTCCTGAGCCTCAGCGGGAGAATGCTTCCCCAGCCCTGGAACAACAGCAGAAAGAGCCATGTCCCGA
GGTCCACCTCTGCTCCTGAGGGGGCTCCCGGGATGAACAGGATGGAGCTTCACTGAGACAGAACCTT
GGCAGCTGCAGTCCCCCAGAATGGGTCCCTATTATCCAGCAGGACATTCAGAGCCAGCGGAAGGTGAA
ACCGCAGCCCCCTCTGAGTGTGCTACCTACCTCAGTGGTATGCCTGCCAAGAGACGCAAGACGATGCCAGGT
GAGGGCCCCCAGCTGCTTCTCTCAGAGGCTGTGAGCCGGGCAGCTAAGGCAGCCGGAGCTCGGCCCTGA
CGAGCCCCGAGAGCCTGAGCCGGGACCTGGAGGCACCAGAGGTTTCAAGAGAGCTACAGGCAGCAGCTCCG
GTCTGATATACAAAAACGACTGCAGGAAGACCCCAACTACAGTCCCAGCGCTTCCCAATGCCAGCGG
GCCTTTGCTGATGATCT

```

ACGCGTACGCGGGCCGCTCGAG - GFP Tag - GTTTAA

Protein Sequence:

>RG215646 representing NM_080703
 Red=Cloning site Green=Tags(s)

```

MEPNDSTSTAVEEPDSLEVLVKTLDSTQTRTFIVGAQMNKVEFKEHIAASVSIPEKQRLIYQGRVLQDDK
KLQEYNVGGKVIHLVERAPPQTHLPSGASSGTGSASATHGGGSPGTRGPGASVHDRNANSYVMVGTFFNL
PSDGSADVHVHINMEQAPIQSEPRVRLVMAQHMRDIQTLLSRMECRGGPQPQHSQPPPQPPAVTPEPVAL
SSQTSEPVSEAPPREPMEAEVEERAPAQNPELTPGPAPAGPTPAPETNAPNHPSPAIEVEVLQELQRL
ESRLQPFLLQRYEVLGAAATTDYNNHGREEDQRLINLVGESLRLGNTFVALSDLRCNLACTPPRHLH
VVRPMSHYTTPMVLQAAIPIQINVTMTGNGTRPPPTPNAEAPPPGPGQASSVAPSSTNVSSAEG
APPPGAPPPATSHPRVIRISHQSVPEVMMHMNIQDSGTQPGGVPSAPTGPLGPPGHGQTLGQQVPGFP
TAPTRVVIARPTPPQARPSHPGGPPVSGTLQGAGLGTNASLAQMVSGLVGQLLMQPVLVAQGTGPMAPP
APATASASAGTTNTATTAGPAPGGPAQPPPTPQPSMADLQFSQLLGNLLGPAGPGAGGSGVASPTITVAM
PGVPAFLQGMDFLQATQTAPPPPPPPPPPPAPEQQTMPPPGSPSGGAGSPGGLGLESLSPEFFTSVVQ
GVLSSLLGSLGARAGSSSEIAAFIQRLSGSSNIFEPGADGALGFFGALLSLLCQNF SMVDVVMLLHGHFQ
PLQRLQQLRSFFHQHYLGGQEPTPSNIRMATHLITGLEEYVRESFSLVQVQPGVDIIRTNLEFLQEQL
NSIAAHVHLHCTDSGFGARLLELQNLQGLFECLALNLHCLGGQMEAAVINGRIRRMRSRGNPSLVSLLTT
MMGLRLQVLEHMPVGPDAILRYVRRVGDPPQPLPEEPMVQGAERASPEPQRENASPAGTTAEAMSR
GPPPAPEGGRDEQDGASAETEPWAAAAPPEWVPIIQDDIQSQRKVKPQPPLSDAYLSGMPAKRRKTMQG
EGPQLLLSEAVSRAAKAAGARPLTSPESL SRDLEAPEVQESYRQQLRSDIQKRLQEDPNYSPQRFPAQR
AFADDP

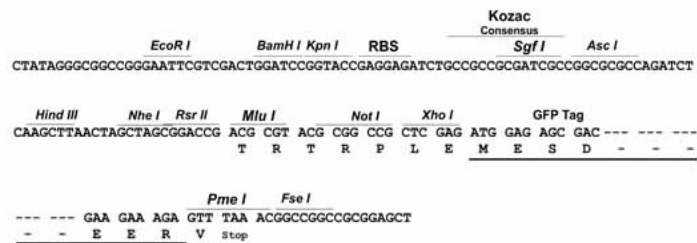
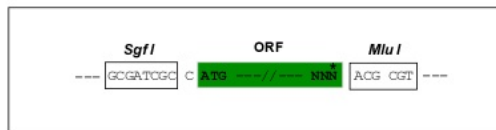
```

TRTRPLE - GFP Tag - V

Restriction Sites: SgfI-MluI

Cloning Scheme:

Cloning sites used for ORF Shuttling:



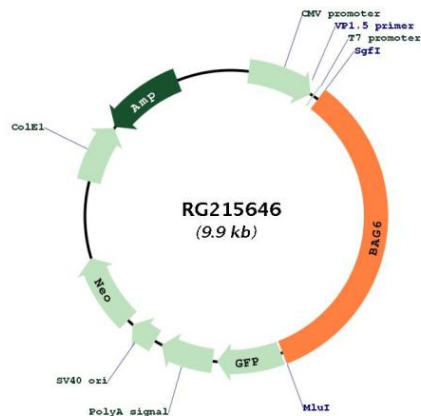
ACCN: NM_080703

ORF Size: 3378 bp

OTI Disclaimer: The molecular sequence of this clone aligns with the gene accession number as a point of reference only. However, individual transcript sequences of the same gene can differ through naturally occurring variations (e.g. polymorphisms), each with its own valid existence. This clone is substantially in agreement with the reference, but a complete review of all prevailing variants is recommended prior to use. [More info](#)

OTI Annotation:	This clone was engineered to express the complete ORF with an expression tag. Expression varies depending on the nature of the gene.
Components:	The ORF clone is ion-exchange column purified and shipped in a 2D barcoded Matrix tube containing 10ug of transfection-ready, dried plasmid DNA (reconstitute with 100 ul of water).
Reconstitution Method:	<ol style="list-style-type: none">1. Centrifuge at 5,000xg for 5min.2. Carefully open the tube and add 100ul of sterile water to dissolve the DNA.3. Close the tube and incubate for 10 minutes at room temperature.4. Briefly vortex the tube and then do a quick spin (less than 5000xg) to concentrate the liquid at the bottom.5. Store the suspended plasmid at -20°C. The DNA is stable for at least one year from date of shipping when stored at -20°C.
RefSeq:	NM_080703.3
RefSeq Size:	3755 bp
RefSeq ORF:	3381 bp
Locus ID:	7917
UniProt ID:	P46379
Cytogenetics:	6p21.33
Protein Families:	Druggable Genome, Stem cell - Pluripotency
Gene Summary:	This gene was first characterized as part of a cluster of genes located within the human major histocompatibility complex class III region. This gene encodes a nuclear protein that is cleaved by caspase 3 and is implicated in the control of apoptosis. In addition, the protein forms a complex with E1A binding protein p300 and is required for the acetylation of p53 in response to DNA damage. Multiple transcript variants encoding different isoforms have been found for this gene. [provided by RefSeq, Jul 2008]

Product images:



Circular map for RG215646