

Product datasheet for **RG215638**

PALM2AKAP2 (NM_007203) Human Tagged ORF Clone

Product data:

Product Type:	Expression Plasmids
Product Name:	PALM2AKAP2 (NM_007203) Human Tagged ORF Clone
Tag:	TurboGFP
Symbol:	PALM2AKAP2
Synonyms:	AKAP-2; AKAP-KL; AKAP2; AKAPKL; MISP2; PALM2; PALM2-AKAP2; PRKA2
Mammalian Cell Selection:	Neomycin
Vector:	pCMV6-AC-GFP (PS100010)
E. coli Selection:	Ampicillin (100 ug/mL)
ORF Nucleotide Sequence:	>RG215638 representing NM_007203 Red=Cloning site Blue=ORF Green=Tags(s)

TTTTGTAATACGACTCACTATAGGGCGGCCGGAATTCGTCGACTGGATCCGGTACCGAGGAGATCTGCC
GCC**CGATCGCC**

ATGGCAGAGGGCGGAATTGCACAAGGAAAGGCTGCAAGCCATAGCAGAAAAAGAAAGAGGCAGACTGAAA
TAGAAGGCAAGCGACAACAGCTTGACGAGCAGATACTTCTGCTGCAGCATTCCAAGTCCAAAGTGCCTTCG
GGAGAAATGGCTGCTGCAGGGCATAACCCGCTGGAAGTCCGAAGAGGAGGAAGCCAGGAGCGGCAGTCT
GAAGAGGATGAGTTCAGAGTCAAGCAACTTGAAGATAACATTAGAGGCTGGAGCAAGAAATACAAACGC
TAGAAAGTGAAGAGTCCCAGATATCTGCCAAAGAGCAAATCATCTAGAGAACTGAAGGAAACAGAAAA
ATCCTTCAAGGACTTTCAGAAGGGTTTCTCCAGTACGGATGGAGATGCAGTAAATTACATTTCTCCAG
CTTCCCGACTGCCAATCCTCTGTTACGAACAGCAGAACCATCACCTGGGCAGGACGGGACCAGCAGAG
CGGCTGGAGTCCGGTGGGAGAATGTGCTGCTAAAGGAAGGTGAGTCAAGCTCGAACGCCACAGAAACATC
CGGCCAGACATGACTATCAAGAAGCCTCCCGACTTTCTGAGGATGATATCTGGCTAAAAAGCGAGGGA
GACAACTATAGTCCACCTCCTGGAGCCTGCTGCCAGCTCTCTTTCCCGAGATCACAAAAACATGGAAA
TTGAGGTGCTGTTGCAGAATGTAAAAGTGTCTGGAATCACCTTACCCACATCCCAGGACCATCC
CTCCGCTTTCTATTCACCCCGCATAATGGCCTCCTTACTGATCACACGAATCCCTGGATAATGATGTT
GCCAGAGAGATCCGCTATCTAGATGAGGTGCTAGAGGCCAATGCTGTGATTCTGCTGTGGATGGAACGT
ACAATGGAACATCCTCCCGAGAGCCTGGTGCAGTGGTTCTGGTGGCGGCCTAAGCCCCCTGTCCACGA
GGCAGCCAGCCAGAACCCTGAAAGAACAGCTAGCCGGCAGGCACCTCCTCACATCGAGCTCAGTAAT
AGCAGCCCTGACCCATGGCAGAGGCAGAAAGAACAATGGCCATTCCCGAGCCAGCCTAGAGATGCGC
TGGGGGACAGCCTGCAGGTGCCTGTGAGCCAGCTCCACAACCAGCTCACGGTGTCTTCCCGAGATGG
AGAGTTCACTCTCACCACACTGAAAAAGGAGGCCAAGTTTGAAGTGCCTGCTTCCATGAGGACAAGAAG
CCCTCAAGCTCTTTGAGGATGACGAGCATGAGAAAGAACAATACTGCATTAGAAAAGTGAAGCCTTCAG
AGGAGATGCTGGAGCTGAAAAGGAGAGGAGAGGCTCATCCGACCCAGGCCGTCAGAAAGAATCCTGG
CATTGCAGCAAAATGGTGAATCCCGCAGGAAAAAACCATCGAGGAGCAGCTGGACGAGGAACATCTG



[View online >](#)

GAGTCGCACAAAAAGTACAAGGAGCGCAAAGAGAGAAGGGCACAGCAGGAACAGTTGCTGCTGCAGAAGC
 AGTTACAGCAGCAGCAGCAGCAGCCCCATCGCAGCTCTGCACAGCCCCTGCCTCTTCTCATGAACGCGC
 AAGCATGATTGACAAAGCAAAGGAGGACATTGTACAGAGCAGATAGATTTCTCTGCTGCTCGCAAACAA
 TTTTCAGCTGATGGAGAATTCCAGGCAAGCGGTGGCCAAGGGCCAGAGTACACCCAGGCTGTTCTCCATCA
 AGCCTTTCTACAGGCCTCTGGGGTCAGTCAACTCAGACAAGCCACTGACTAATCCGAGACCACCTTCTGT
 CGGGGGACCTCCAGAAGACAGTGGTGCCTCAGCCGCCAAGGGACAGAAATCCCCGGTGCCTGGAGACC
 CCATCGCAGCAGGAAGCCAGGGCAACACAGCCCTCTCAGGGGAAGGAAGGGCCCTACAGCGAGCCTTCTA
 AACGTGGGCCCTTATCTAAACTGTGGGCTGAGGATGGAGAATTTACGAGCGCCCGGCTGCTCCTACTGT
 GGTCAAGGATGATGACCATGGGATTTTGGATCAGTTCTCAAGATCTGTCAATGTCTCCTTACCCAAAGAG
 GAGCTTACTCTGGTCTGGACGAATTGTCGGTGGGTCTCAGGATACCACAGTCTGGAGACCCTATCCA
 ATGATTTTCAGCATGGACAACATCAGTGACAGCGGGGCATCCAATGAGACAACCAATGCCCTCCAGGAAAA
 TTCCTGGCTGATTTTCTGCCCCAGACACCACAACTGACAACCCCTCAGAGGGCCGAGGAGAAGGC
 GTCTCAAAGTCATTTAGTGATCATGTTTCTATTCCCCTCTCCACGCTGGGGACTCTCCGTTGGTTG
 ATGACCCCTTGGAGTATCAGGCTGGCTCCTGGTGCAGAATGCCATTCAACAAGCCATAGCCGAGCAGGT
 GGATAAAGCTGTGTCCAAAACCAGCAGGATGGAGCAGAGCAACAGGGACCTGAAGCGACTGTAGAGGAA
 GCTGAAGCTGCGCTTTTCGGCTCAGAAAAGCCTCAGAGCATGTTTGAGCCACCTCAGGTGTCTTCTCCTG
 TTCAAGAGAAAAGGGATGTATTACCAAAGATTCTGCCTGCTGAAGACAGGGCGCTCAGGGAAGGGGGCC
 CCCCCAGCCACTGCCAGCTGTGCAGCCAGTGGCCGATTAACATGGAGGAGACCAGGCCGAAGGAAGC
 TATTTTCAGCAAGTACTCGGAGGCAGCTGAGCTGAGAAGCACAGCCTCCCTCCTGGCCACTCAAGAATCTG
 ACGTGATGGTTGGGCCTTTCAGCTGAGGTCCAGGAAACAGCGGACTTTGTCCATGATTGAGGAAGAGAT
 CCGAGCAGCTCAGGAAAGGAAGAGGAGCTGAAGAGGCAGAGACAAGTCTGCAGAGTACGCAGAGCCCC
 AGGACAAAAGATGCCCATCACTGCCCTCAGAACATGCTACAAAAGTCTCAGGAAAAATAGAGAAAG
 TCAAACCTCCTCATCCCCACCACTGAAGGCCCGACTTGACGCTGACTTAGCCCTGAAGAGGCTGC
 CGGAACCCAGCGCCCAAGAATCTGATGCAGACCCTCATGGAAGACTATGAGACACACAAAATCTAAAAGG
 CGCGAGAGAATGGATGATAGTAGTTACACTTCTAAGTTACTGTCTTGAAGGTGACTTCCGAGGTCTCG
 AGGCCACACGGTTAATCGAAGAAAGAGCGCACTGGCTTTCGCTGGGAAGCAGGGATCTATGCCAACCA
 GGAGGAAGAAGACAACGAA

ACGCGTACGCGGCCGCTCGAG – GFP Tag – GTTTAA

Protein Sequence:

>RG215638 representing NM_007203
 Red=Cloning site Green=Tags(s)

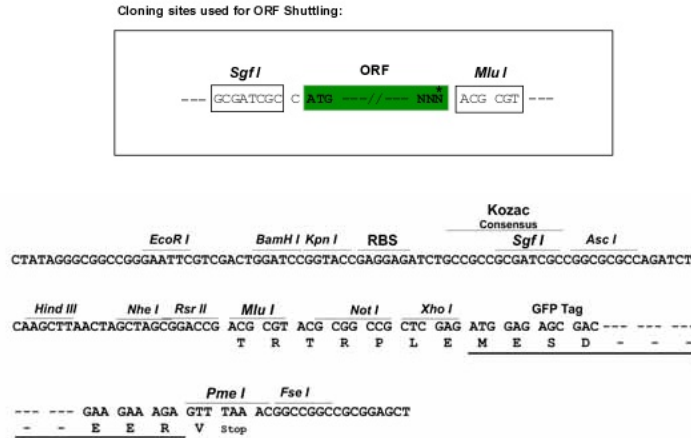
MAEAEHLKERLQAI AEKRKRQTEIEGKRQQLDEQILLQHSKSKVLREKWLQGIPAGTAEERARRRQS
 EEDEFVRVQLEDNIQRLEQEIQTLESEESQISAKEQIILEKLEKETEKSFKDFQKGFSSDGDVAVNYISSQ
 LPDLPILCSRTAEPSPGQDGT SRAAGVWENVLLKEGESASNATETSGPDMTIKPPQLSEDDIWLKSEG
 DNYSATLLEPAASSLSPDHKNMIEVSVAECKSVPGITSTPHPMDHPSAFYSPHNGLLTDHHSLEDNDV
 AREIRYLDEVLEANCDSAVDGTYNGTSSPEPGAVLVGGLSPPVHEATQPEPTERTASRQAPPHIELSN
 SSPDMAEAERTNGHSPSQPRDALGDSLQVPVSPSSTSSRCSRDGEFTLTTLKKEAKFELRAFHEDKK
 PSKLFEDDEHEKEQYCIKVRPSEMLELEKERRELIRSQAVKKNPGIAAKWVWNPPEKTIIEEQLDEEHL
 ESHKKYKERKERRAQEQQLLQKQLQQQQQPPSQC LAPASSHERASMDKAKEDIVTEQIDFSAARKQ
 FQLMENSRAQAVAKGQSTPRLFSIKPFYRPLGSVNSDKPLTNPRPPSVGGPPEDSGASAAKQKSPGALET
 PSAAGSQNTASQKKEGYPYSEPSKRGPLSKLWAEDGEFTSARAVLTVVKDDDHGILDQFSRSVNVSLTQE
 ELDSGLDEL SVRSQDTTVLETL SNDF SMDNISDSGASNETTALQENSLADFLPQTPQTDNPSEGRGEG
 VSKSFDHGFYSPSSTLGDSPLVDDPLEYQAGLLVQNAIQQAIAEQVDKAVSKTSRDGAEQQGPEATVEE
 AEAFAFGSEKPPQSMFEPQVSSPVQEKRDVLPKILPAEDRALRERGPPQPLPAVQPSGPINMEETRPEGS
 YFSKYSEAAELRSTASLLATQESDVMVGPFLRSRQRQLSMIEEIRAAQEREEELKRQRQVLQSTQSP
 RTKNAPSLPSRTCYKTAPGKIEKVKPPSPPTTEGPSLQPDLAPEEAAGTQRPNLMQTLMEDYETHKSKR
 RERMDDSSYTSKLLSCKVTSEVLEATRNNRKSALALRWEAGIYANQEEEDNE

TRTRPLE – GFP Tag – V

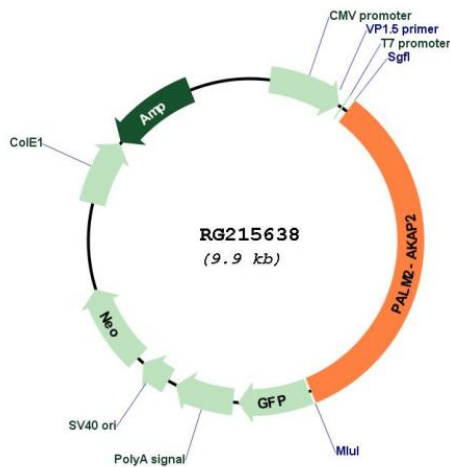
Restriction Sites:

Sgfl-MluI

Cloning Scheme:



Plasmid Map:



ACCN:

NM_007203

ORF Size:

3309 bp

OTI Disclaimer:

The molecular sequence of this clone aligns with the gene accession number as a point of reference only. However, individual transcript sequences of the same gene can differ through naturally occurring variations (e.g. polymorphisms), each with its own valid existence. This clone is substantially in agreement with the reference, but a complete review of all prevailing variants is recommended prior to use. [More info](#)

OTI Annotation:

This clone was engineered to express the complete ORF with an expression tag. Expression varies depending on the nature of the gene.

Components:	The ORF clone is ion-exchange column purified and shipped in a 2D barcoded Matrix tube containing 10ug of transfection-ready, dried plasmid DNA (reconstitute with 100 ul of water).
Reconstitution Method:	<ol style="list-style-type: none">1. Centrifuge at 5,000xg for 5min.2. Carefully open the tube and add 100ul of sterile water to dissolve the DNA.3. Close the tube and incubate for 10 minutes at room temperature.4. Briefly vortex the tube and then do a quick spin (less than 5000xg) to concentrate the liquid at the bottom.5. Store the suspended plasmid at -20°C. The DNA is stable for at least one year from date of shipping when stored at -20°C.
RefSeq:	<u>NM_007203.5</u>
RefSeq Size:	7522 bp
RefSeq ORF:	3312 bp
Locus ID:	445815
UniProt ID:	<u>Q9Y2D5</u>
Cytogenetics:	9q31.3
Gene Summary:	This gene belongs to the paralemmin downstream gene (PDG) family defined in PMID:22855693. Paralemmin downstream genes may have evolved contiguously with the paralemmin genes and are associated with other paralemmin paralogs in humans and several other taxa. The gene encodes three distinct protein isoforms, the PALM2 isoform, the AKAP2 isoform and the PALM2-AKAP2 isoform. The biological significance of the PALM2-AKAP2 isoforms is yet unknown. Earlier, PALM2 and AKAP2 were annotated as separate genes and PALM2-AKAP2 was annotated as a readthrough gene. [provided by RefSeq, May 2019]