

Product datasheet for **RG215610**

RUSC2 (NM_014806) Human Tagged ORF Clone

Product data:

Product Type: Expression Plasmids
Product Name: RUSC2 (NM_014806) Human Tagged ORF Clone
Tag: TurboGFP
Symbol: RUSC2
Synonyms: Iporin; MRT61
Mammalian Cell Selection: Neomycin
Vector: pCMV6-AC-GFP (PS100010)
E. coli Selection: Ampicillin (100 ug/mL)
ORF Nucleotide Sequence: >RG215610 representing NM_014806
Red=Cloning site Blue=ORF Green=Tags(s)

TTTTGTAATACGACTCACTATAGGGCGGCCGGAATTCGTCGACTGGATCCGGTACCGAGGAGATCTGCC
GCC**CGATCGCC**

ATGGATAGTCCCCAAAGCTGACTGGAGAGACCCTCATCGTTCATCACATCCCCCTGGTGCCTGCCAAG
TCCAGACAGGCAGTGTGTGGAGGGCAGGTGGAGGTGGTGGGAGCACAAAGACCTAATCCCTTCTGCC
ACCTGAGCTGGGCATACCCAGCCGATCAAGACCTAGGACAAGCTGACTCCCTGCTATTCAGCAGCCTG
CACTCTGCTCCAGGAGAACTGCACGGTCTATAGACAGCACCAAGAGTAGGAGTCGGGATGGAAGAGGCC
CTGGAGCCCCAAACGACACAACCCCTTCTTGCTGCAGGAGGGTGTGGGTGAGCCAGGACTTGGTGAACCT
GTATGATGACAGCATTGGTGACAGTGCCACCCAGCAGTCCCTCCACCTGCATGGCACTGGCCAGCCCAAC
TTTCATCTATCCTCTTTCCAGCTGCCACCATCTGGCCCCAGAGTGGCAGGCCATGGGGGACAACACGCA
GTCCGGCTGGAGTGGTGGAAAGGGCAGGAACAGGAGCCAGTGATGACCTTGGATACTCAGCAGTGCCGCAC
CAGCCACTGCTGCCGGCCAGAGCTGGAAGCAGAGACTATGGAGCTGGATGAGTGTGGGGACCTGGTGGG
AGTGGCAGTGGGGTGGAGCCAGCGATACCTCTGGCTTTTCTTTGACCAGGAATGGAAGCTCAGTTCAG
ATGAATCCCCAAGGAACCTGGATGCTCCGGCTCAGGGGACCAGCACTGCCGCTGCAGTAGCACATCCAG
TCAGTCCGAGGCAGCTGACCAGTCCATGGGCTATGTGAGCGACTCCTCCTGCAACAGTTCAGATGGTGTG
CTGGTCACCTTCAGCACCTCTACAACAAGATGCATGGCACCCCGTGCCAATCTCAACTTGCCCCAC
AGTCTGCAGCGACTCTTCCTTCTGCAGCCACTCAGACCCTGGCGCTTCTATCTGGATCTGCAGCCCTC
CCCATTGAGTCTAAGATGTCTTATGAGTCCCATCACCCCTGAAAGTGGAGGAAGGAAGGGGCTATGGT
TGCCCTCATGCCTCTTCTCCTGAGCTTGTGCCAACTGCAACTCTACCGCCCACTGTGAGCCGTGCC
CAGCAGTGGCTGACCTCACAGCTGCTTCCAAAGCCAGGCCCGTCTTGTGTGGCCACACAAAATTA
TAACTTGTACCTGTGACCTATCTTCCCAATCATCCCCAAGCCCTGCTGGCTCTTCCATCACTAGCTGC
TCTGAGGAACACACCAAGATAAGTCCCCACCAGGCCCTGGCCCAGACCCAGGCCCCAGCCAGCCCTCTG
AGTATTACCTATCCAGAAGCCAGAAGTCCAGCCAGAGGAACAAGAAGCAGTGAGTTCCTCCACCAAGC
AGCAGCTGCTGTGGGCCCACTGTGCTTGGAGGACAAGTATACGAATACTTACCCCCAACCTCAGC



[View online >](#)

ACTGGACGTCAGCGCTCCCGCAGCTATGATCGCAGCCTGCAGCGCAGCCCTCCTGTCCGCTGGGCTCGC
 TGGAACGTATGTTGAGTTGCCAGTGCCTTGAGTGAGGGCCCTGCAGCCATGGCCGGGCTGGCTCCCC
 ACCCAGGAGGGTACCTCCTTTGCCGAGCTGGCCAAGGGCCGGAAGAAAAGTGGAGGCTCTGGCTCGCC
 CCACTTCGTGTGAGTGTGGGGACTCCTCCAGGAGTTCTACCCATCCAAGAAGCCAGCAAGATCGGG
 GGGCCCCACTGGATGAGGGCACTTGCTGTAGCCATAGCCTGCCACCCATGCCTTTGGGGCCAGGCATGGA
 CCTACTGGCCCCAGACCAAGTCCACCTGGTCCACCCAGGTCTGTCAGGGACCCCACTCCAGTGAGATG
 CCTCCTGTGGCCTCAGAGCTACTGGGCAAGCCCCCTGGCTCAGCTGATGGATCCAGGGCTGCTCTCC
 CAGGGAGCCAGCCAACAGCCATACCCAGAGGGATGCAAGAGCTAGAGCTGACGGGGTGGCACCAGAG
 CCGACCAGTCCTTCGCTACAGCAAGGAACAGAGGCCAACCACTGCCATCCAGCCCTTCGTGTTCCAG
 CACCATTCCCCAAGCAGCTGGCCAAGGCCCGGGCCCTCCACAGCCTTTCCAGCTCTACAGCCTCTCAG
 GCTGCAGCCGTACACAGCAGCCTGCCCCACTGGCTGCCCTGCTGCTCAAGTCTCAGTCCAGCTCCCTC
 AGGGGAACCGCAGGCATCCACTCCCGAGCCACTGGCAGAGGTGCCAGGAAAGCTGGGTCTGAGCCAGAG
 ACCTCTCGCCATCGCCCTGGGCACTACTCCCCATCCGGAGTGTGGCCCTTTGGGCCAGCACTG
 ACTTTCTGCCTCACTTCGTGCTCCCCTCCCCAGAGCAGCCACAGCCACAGAAAGCTGCCCCATG
 GAGCCACTCCTGTCTTCTGCTGTCGGCTGCCACCTCCAGCAGCCGAGAAGGAGGATCAGAAGATA
 CTGACCTTGACTGAGTACCGGCTCCATGGAACAGGAAGCTTGCCGCTCTGGGCTCCTGGCGATCTGGCC
 TCAGCCGAGCAGAGAGCCTGGCCCGGGAGGTGGTGAGGGCAGCATGGCCACCAGGCCAGTAATGCCAA
 CCACCTATCCCCTCAAGCCCTCAAGTGGCGGGAATACAGGAGGAAGAACCCTAGGGCCACCTGGTTTG
 TCAGGGAGCCTAGACCGAAGATCACAAGAAGCTCGGCTGGCCCGAAGAAACCCTATCTTTGAGTTCCTG
 GCTCCCTCAGTGTGCCAGCCATCTGAAGTCCGGCTGAATGGCCAAGCAGTGAAGCCGTTACCCTGAC
 CTGCCCTGACTTCCAGGACCCCTTTCTTGACGGAGAAGCCTCCAGTGAAGTGTGCTGCTCCAGAT
 GGCAGCTCAGAGGCCATTTCCATTGACCTGCTTCAGAAAAAGGGCTGGTAAAAGCTGTTAACATCGCTG
 TGGACCTCATTGGCTCATTTTGGCAAGCCGGGATCCCGGGTGAAGGCAAGCTGGAAACAGTTC
 TGTGAGCCCAATGTGGGCCACCTGGTTCTGAAGTACTTGTGCCCTGCCGTCGGCCGCTGCTGGAGGAT
 GGGCTCAAGCCCTTGTACTGGACGTCATCATCGGGCAGCGTAAGAATGCCATGGAGTGTGGTTGAGG
 CTTCCACACAGCTAGGCCATCCACCAAGTCTGCATGGCCTCTACAACAAAGTCAAGCAATTCACAGA
 GCTCACCAGTCATACCATGCGCTTCAACGCCTTCACTCGGCCTGCTCAACATCCGGTCCCTGGAGTTC
 TGGTTTAAACACCTCTATAACCACGAAGACATCATCCAGACCCACTACCAGCCCTGGGGTTCCTGAGTG
 CAGCTCATAACCGTGTGCCGGCCTTTGAAGAGCTGCTGCTGCTACAGCCCTGGCCCTGCTGCC
 CTTCAGCCTCGACTTGTGTTCCAGCACCAGGCTGCTGCAAGTGGGCAGCAGCAGCGGCAGCACAAGGAA
 CTGCTGCGGGTGTCCAGGACCTGCTGCTGCTGCCACTCCACGCTGCAGCTGGCCCGGGCCCGGGCC
 AGGAGGGCCCTGGAGACGTGGACAGGGCAGCCAAAGGGGAGCGGGTGAAGGGTGTGGGTGCCTCAGAAGG
 TGGAGAAGAGGAAGGAAGAAGAGGAGACAGAAGAGGTGGCAGAGGCAGCCGGGGGCTCAGGGCGTGCC
 AGGTGGGCCCAGGTGGGCAGGCCGGCTGGTGGTACCAGCTCATGCAGAGCTCCAGGTCTACATCGATG
 GCTCCATTGAGGGTCCAGGTCCCTCGTGGTAGCAGCAACAGCAGCAGCGAGAAAAAGAAAGGGGCAGG
 AGGTGGGGGACCTCCCAGGCTCCACCACCCCGAGAGGGAGTAGTGGAGGGGGCTGAGGCCTGCCCTGCC
 TCTGAGGAGGCCCTGGGCCGGAAAGGGGCTGGCCCTTCTGGATGGGGAGCCCCCTGACTCTGTGCTGG
 CCGAGCTGAGGGCAGTCCGGAGAGGGAAGGGCCCGCTGCCTCGCAGCAGAAAAAGAGGAGGGGCCCTC
 AGGCCTTACCTGGAGGCATCAAGTGGGGACACCTTTGGCTCCCGAAAAGCCAGCGGAGGGCCCGG
 CCCACAAATAGGCTCCCCCGACTGGCTGAGCCTGGACAAGTCCATGTTCCAAGTGGCGCAGACAG
 TGGGTTCCCGCCGGGAGCCAGAGCCAAAGGAGAGCCTGCAGGAGCCACTCCCCAGCCCTGCCCTCCAG
 TCCTCCGTGTGAGGTGCAGGCACTGTGCCACCCTGGCCACCGGCCCTGGACAGCTGAGCTTCCACAAA
 GGAGACATCCTACGAGTGTGGGGCAGCTGGAGGAGACTGGCTGCGCTGCAGCCGTGGCCCCGACTCTG
 GCCTGGTGCCCTGGCTACGTGACATTGACCCCACTCCAAGTCCAACCCTGGAAGCAGCCAAAAAC

ACGCGTACGCGGCCGCTCGAG - GFP Tag - GTTTAA

Protein Sequence: >RG215610 representing NM_014806
 Red=Cloning site Green=Tags(s)

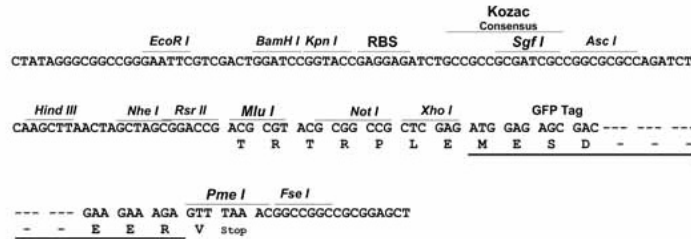
MDSPPKL TGETLIVHHIPLVHCQVPDRQCCGAGGGGGSTRPNPFCPELGITQPDQDLGQADSLLFSSL
 HSAPGGTARSIDSTKSRSDRGRPGAPKRHNPFLLQEGVGEPLGDL YDDSI GDSATQQSFHLHGTGQPN
 FHLSSFQLPPSGPRVGRPWGTTTRSRAGVVEGQEQEPMVTLDTQQCGTSHCCRPELEAETMELDEC GPGG
 SGSGGGASDTSGFSFDQEWKLSDESPRNP GCSGSDQHCRCSSSTSSQSEAADQSMGYVSDSSCNSSDGV
 LVTFSTLYNKMHGTPRANLNSAPQSCSDSSFCSHSDPGAFYLDLQPSPFESKMSYESHHPESGGREGGYG
 CPHASSPELDANCNSYRPHCEPCPAVADLTACFQSQARLVVATQNYKLVTCDLSSQSSPAGSSITSC
 SEEHTKISPPPGPDPGPSQPSEYYLFQKPEVQEEQEA VSSSTQAAAAVGPTVLEGEVYVNTSPPNLS
 TGRQRSRSYDRSLQRSPVRLGSLERMLSCPVRLSEGPAAMAGPSPRRVTSFAELAKGRKKTGGSGSP
 PLRVSVGDSSQEFSPIQEAQQDRGAPLDEGTCCSHSLPPMPLGPGMDLLGPDPSPPWSTQVCQGPSSEM
 PPAGLRATGQGPLAQLMDPGPALPGSPANSHTQRDARARADGGGTERPVLRYSKQRPTLPIQPFV FQ
 HHFPKQLAKARALHLSQLYSLSGCSRTQQAPLAAPAAQVSVAPSGEPQASTPRATGRGARKAGSEPE
 TSRPSPLGSYSPIRSVGPFPGPSTDSSASTSCSPPEQPTATELPPWVSHSCPSAVRPATSQQPQKEDQKI
 LTLTEYRLHGTGSLPPLGSWRSGLSRAESLARGGEGSMATRPSNANHLSPQALKWREYRRKNPLGPPGL
 SGLDRRSQEARLARRNPIFEFPGSL SAASHLNCRLNGQAVKPLPLTCPDFQDPFSLTEKPPAEFCLSPD
 GSSEAISIDLLQKKGLVKAVNIAVDLIVAHFGTSRDPGVKAKLGNSSVSPNVGHLVLYKLCPAVRVLED
 GLKAFVLDVIGQRKNMPWSVVEASTQLGPSTKVLHGLYKVSQFPELTSHTMRFNAILGLLNIRSLEF
 WFNHLYNHEDIIQTHYQPWGFLSAHTVCPGLFEELLLLLLQPLALLPFLDILLFQHRLQSGQQQRQHK
 LLRVSQDLLLLSAHSTLQLARARGQEGPDVDRAAQGERVKGVGASEGEEEEEEEEETEEVAEAGGSGRA
 RWARGGQAGWYQLMQSSQVYIDGSI EGSRFPRGSSNNSSEKKKGAGGGGPPQAPPPREGVVEGAECPA
 SEEALGRERGWPFWMGSPD SVLAELRRSREREGPAASPAENE EGASEPSPGGIKWHLFGSRKAQREAR
 PTNRLPSDWLSLDKSMFQLVAQT VGSRRPEPEKESLQEPHSPALPSSPPCEVQALCHHLATGPGQLSFHK
 GDILRVLGRAGGDWLRCSRGPDSGLVPLAYVTLTPTSPPTPGSSQN

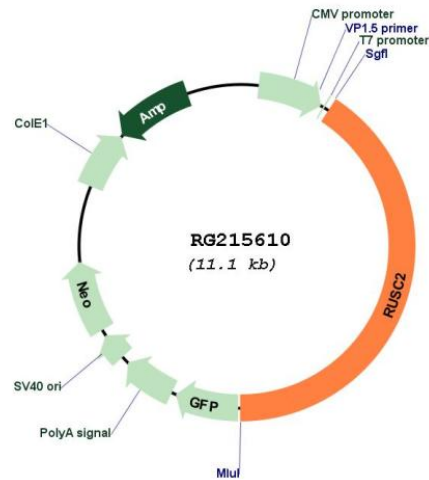
TRTRPLE - GFP Tag - V

Restriction Sites: SgfI-MluI

Cloning Scheme:

Cloning sites used for ORF Shutting:



Plasmid Map:


ACCN:	NM_014806
ORF Size:	4548 bp
OTI Disclaimer:	The molecular sequence of this clone aligns with the gene accession number as a point of reference only. However, individual transcript sequences of the same gene can differ through naturally occurring variations (e.g. polymorphisms), each with its own valid existence. This clone is substantially in agreement with the reference, but a complete review of all prevailing variants is recommended prior to use. More info
OTI Annotation:	This clone was engineered to express the complete ORF with an expression tag. Expression varies depending on the nature of the gene.
Components:	The ORF clone is ion-exchange column purified and shipped in a 2D barcoded Matrix tube containing 10ug of transfection-ready, dried plasmid DNA (reconstitute with 100 ul of water).

Reconstitution Method:

1. Centrifuge at 5,000xg for 5min.
2. Carefully open the tube and add 100ul of sterile water to dissolve the DNA.
3. Close the tube and incubate for 10 minutes at room temperature.
4. Briefly vortex the tube and then do a quick spin (less than 5000xg) to concentrate the liquid at the bottom.
5. Store the suspended plasmid at -20°C. The DNA is stable for at least one year from date of shipping when stored at -20°C.

RefSeq: [NM_014806.4](#)

RefSeq Size: 5199 bp

RefSeq ORF: 4551 bp

Locus ID: 9853

UniProt ID: [Q8N2Y8](#)

Cytogenetics: 9p13.3

Gene Summary: This gene encodes a RUN and SH3 domain containing protein that interacts with Rab1b and Rab1-binding protein GM130. Alternatively spliced transcript variants have been observed for this gene. [provided by RefSeq, Jun 2012]